

COPYRIGHT: Reuse or reproduction of the contents of this document is not permitted without written permission of Bid Architecture LLC

WINDOW SCHEDULE				
TYPE	SIZE (ROUGH OPENING)	MATERIAL	OPERATION	NOTES
A	1'-6" X 6'-0"	-	FIXED	1,2,4
B	2'-6" X 3'-0"	-	AWNING	1,2,4
C	2'-6" X 5'-0"	-	FIXED	1,2,4
D	5'-0" X 3'-0"	-	CASEMENT	1,3,2,4
E	5'-0" X 5'-0"	-	FIXED	1,2,4
F	7'-0" X 1'-4"	-	FIXED	1,2,4
G	7'-0" X 5'-6"	-	SWING	1,2,4,5

WINDOW SCHEDULE NOTES:

- SAFETY GLAZING MAY BE REQUIRED FOR WINDOWS NEAR A SLIDING DOOR
- ALL WINDOWS TO HAVE A MAXIMUM U-FACTOR OF 0.35
- WINDOWS LABELED "EGRESS WINDOW" IN PLAN MUST COMPLY WITH: MIN AREA: 5.7SF
MIN HEIGHT: 24"
MIN WIDTH: 20"
- WINDOWS TP BE THERMALLY BROKEN
- SEE DOOR SCHEDULE

WINDOW SPECIFICATIONS:

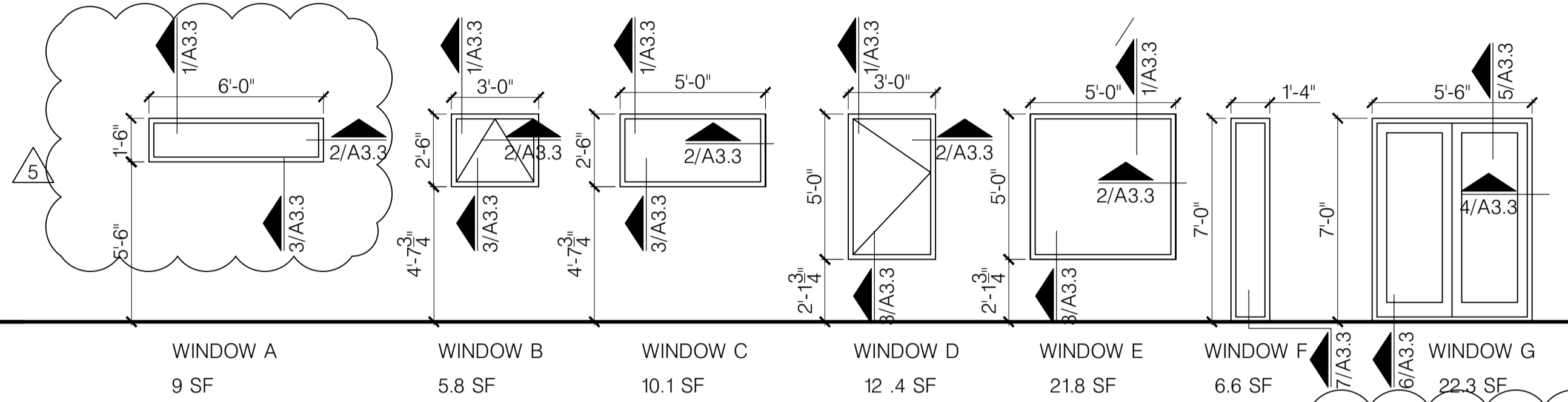
- Size and window configuration. See Window Schedule
- Color options. To be selected
- Factory Mulling Capability. Preferred
- Design Pressure Rating. 25
- U Factor. 0.35 or lower
- Material. To be selected
- Glazing Type. To be selected
- Hardware type. To be selected
- Exterior Washing Capability. Washing from interior preferred
- Warranty (Window & glazing units). 10 years
- Insect Screens. Standard Insect Screens

GENERAL NOTES:

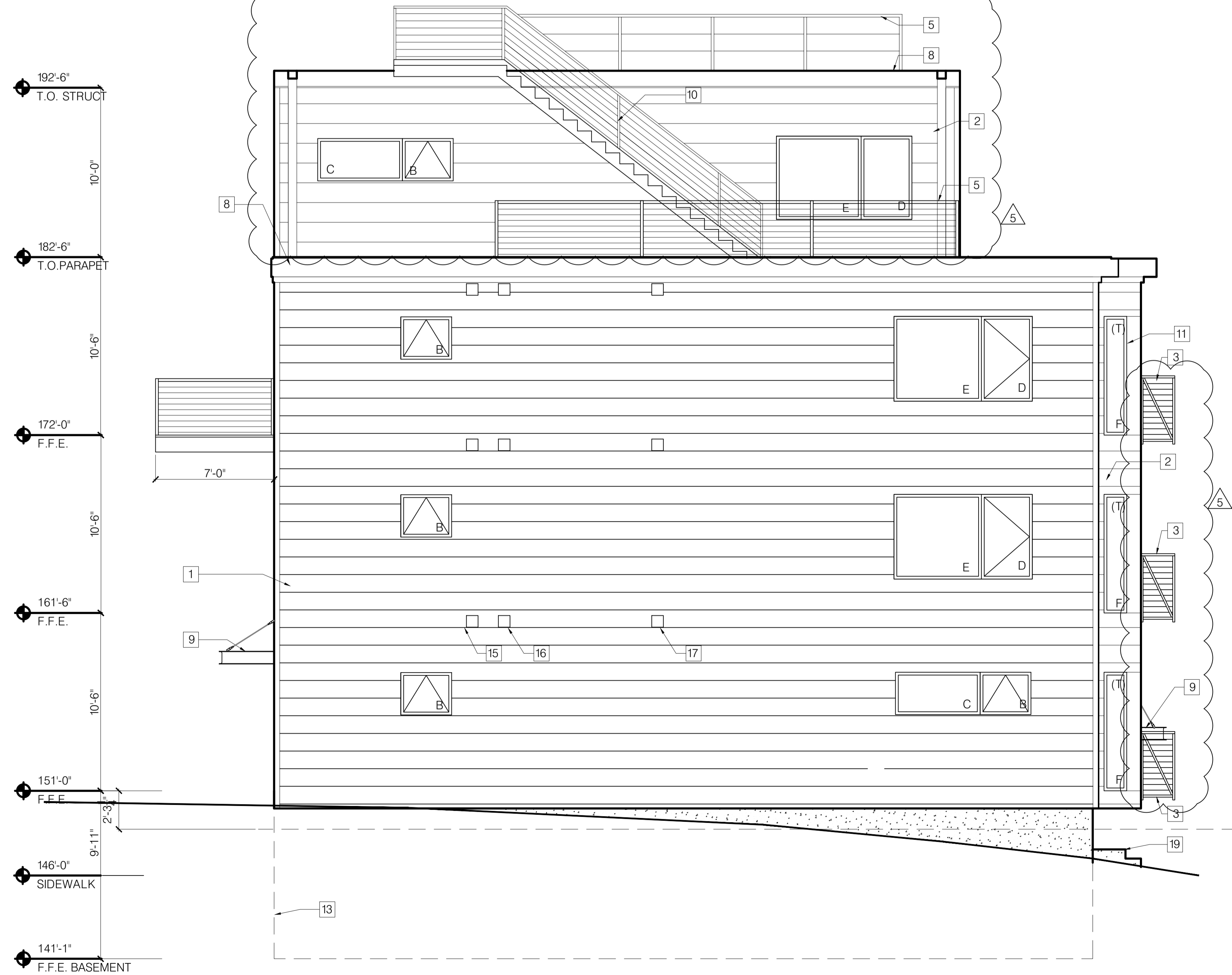
- GLAZING IN ALL DOORS IS REQUIRED TO BE SAFETY GLAZING
- FINAL FINISHES TO BE SELECTED BY OWNER.
-
-

KEYNOTES:

- LP SMART SIDING - SMOOTH FINISH - CLAPBOARD - 11.84 WIDTH - COLOR 1
- LP SMART SIDING - SMOOTH FINISH - CLAPBOARD - 11.84 WIDTH - COLOR 2
- FABRICATED METAL GUARD SYSTEM - WEDGE LOCK 3000 BY DECK-RAIL OR SIMILAR
-
- HANDRAIL W/ 42" HISS HSS GUARDRAIL W/ HORIZONTAL STEEL RODS @ 3 1/2" O.C.
-
-
- GALVANIZED FINISHED BREAK METAL COPING
- FABRICATED METAL AWNING WITH METAL ROD SUPPORTS
- EXTERIOR STAIR
- BREAK METAL WINDOW TRIM DETAIL
- LINE OF ROOF BEYOND
- LINE REPRESENTS BASEMENT BELOW GRADE
- SCUPPER AND DOWNSPOUT -SEE DETAIL 10/A3.2
- DRYER VENT
- HVAC EXHAUST
- HVAC INTAKE
- LOCATION FOR INSTALLATION OF HEAT PUMP UNITS
- CONCRETE STEPS
- LOCATION OF BUILDING ADDRESS - TO FOLLOW CITY STANDARDS

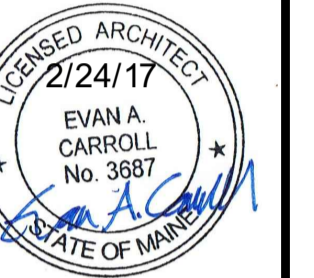


1 FRONT (SOUTH EAST) ELEVATION
SCALE: 1/4" = 1'-0"



2 SOUTH WEST ELEVATION
SCALE: 1/4" = 1'-0"

Bid Architecture
PO Box 8235
Portland, ME
04104
207.408.0168
evan@bidarchitecture.com



PROJECT NO. **16035**
PROJECT NAME **7 CUMBERLAND PORTLAND, ME**

REVISIONS	DATE	DESCRIPTION
1	03-15-2017	PERMIT SET
2	05-12-2017	NOT FOR CONSTRUCTION
3	07-01-2017	
4	08-07-2017	
5	08-16-2017	

PERMIT SET
NOT FOR CONSTRUCTION

DRAWN BY **EMW**
SHEET TITLE **ELEVATIONS**

ISSUE DATE **2/24/17**
SCALE **AS SHOWN**

2.1
CITY OF PORTLAND
APPROVED SITE PLAN
Subject to Conditions of Approval and Standard Conditions

