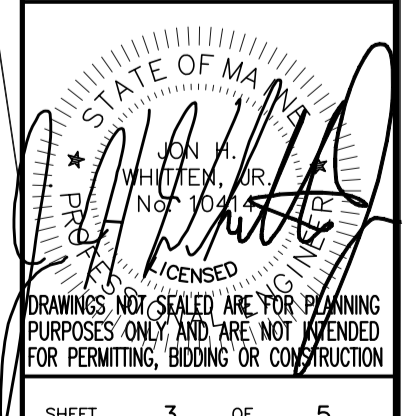


| NO. | DATE    | REVISIONS                 |
|-----|---------|---------------------------|
| 1   | 5/12/17 | REVISED PER CITY COMMENTS |

PROJECT NAME: 7 CUMBERLAND AVE.  
 PORTLAND MAINE  
 SHEET NAME: LANDSCAPE PLAN

PROJECT NO: 17004  
 DRAWING NO: 17004 B  
 ARCHITECT: JHW  
 CHECKED: JHW  
 APPROVED: JHW  
 SCALE: AS SHOWN  
 DATE ISSUED: FEB. 22, 2017  
 CLIENT: GUNNERS PROPERTIES, LLC  
 126 UNDERWOOD DRIVE  
 FALMOUTH, ME 04105

**Plymouth Engineering, Inc.**  
 P.O. Box 46 30 Lower Detroit Road  
 Falmouth, Maine 04909  
 Tel: (207) 257-2071 Fax: (207) 257-2130  
 info@plymouthengineering.com  
 www.plymouthengineering.com



DATE OF APPROVAL: May 24, 2017  
 PLANNER: Matthew Grooms  
 PROJECT NO: 2017-045

PROPOSED 6-UNIT BUILDING  
 1<sup>ST</sup> FLOOR FFE = 151.00'  
 BASEMENT FFE = 142.00'

LIMIT OF SIDEWALK RECONSTRUCTION TO  
 ELIMINATE EXISTING DRIVEWAY APRONS  
 WITHIN THE PROPERTY LIMITS.

NEW, THREE-FLOWERED MAPLE (ACER  
 TRIFORUM, 1.5"-2" CALIPER) STREET TREE.  
 INSTALLATION SHALL MEET CITY OF  
 PORTLAND STANDARDS, SEE DETAILS.

RETAIN EXISTING TREE,  
 INSTALL NEW TREE GRATE

| SYMBOL | QUANTITY | BOTANICAL NAME                       | COMMON NAME            | SIZE         | COMMENTS  |
|--------|----------|--------------------------------------|------------------------|--------------|-----------|
| AB     | 6        | <i>Abies balsamea 'Nana'</i>         | Dwarf Balsam Fir       | #3 Container | 2' o.c.   |
| AS     | 4        | <i>Astilbe chinensis 'Superba'</i>   | False Spirea           | #2 Container |           |
| HH     | 8        | <i>Hemerocallis 'Happy Returns'</i>  | Happy Returns Daylily  | #2 Container | 2' o.c.   |
| HS     | 4        | <i>Hemerocallis 'Stella Supreme'</i> | Stella Supreme Daylily | #2 Container | 2' o.c.   |
| HR     | 2        | <i>Hosta 'Regal Splendor'</i>        | Regal Splendor Hosta   | #2 Container |           |
| HW     | 2        | <i>Hosta 'Widebrim'</i>              | Widebrim Hosta         | #2 Container |           |
| RR     | 3        | <i>Rosa rugosa 'Rubrum'</i>          | Rosa Rugosa            | 2'-3' ht.    | 4' o.c.   |
| RT     | 8        | <i>Rhododendron 'Towhead'</i>        | Towhead Rhododendron   | #2 Container | 3' o.c.   |
| SS     | 6        | <i>Schizachyrium scoparium</i>       | Little Bluestem        | #2 Container | 2.5' o.c. |

