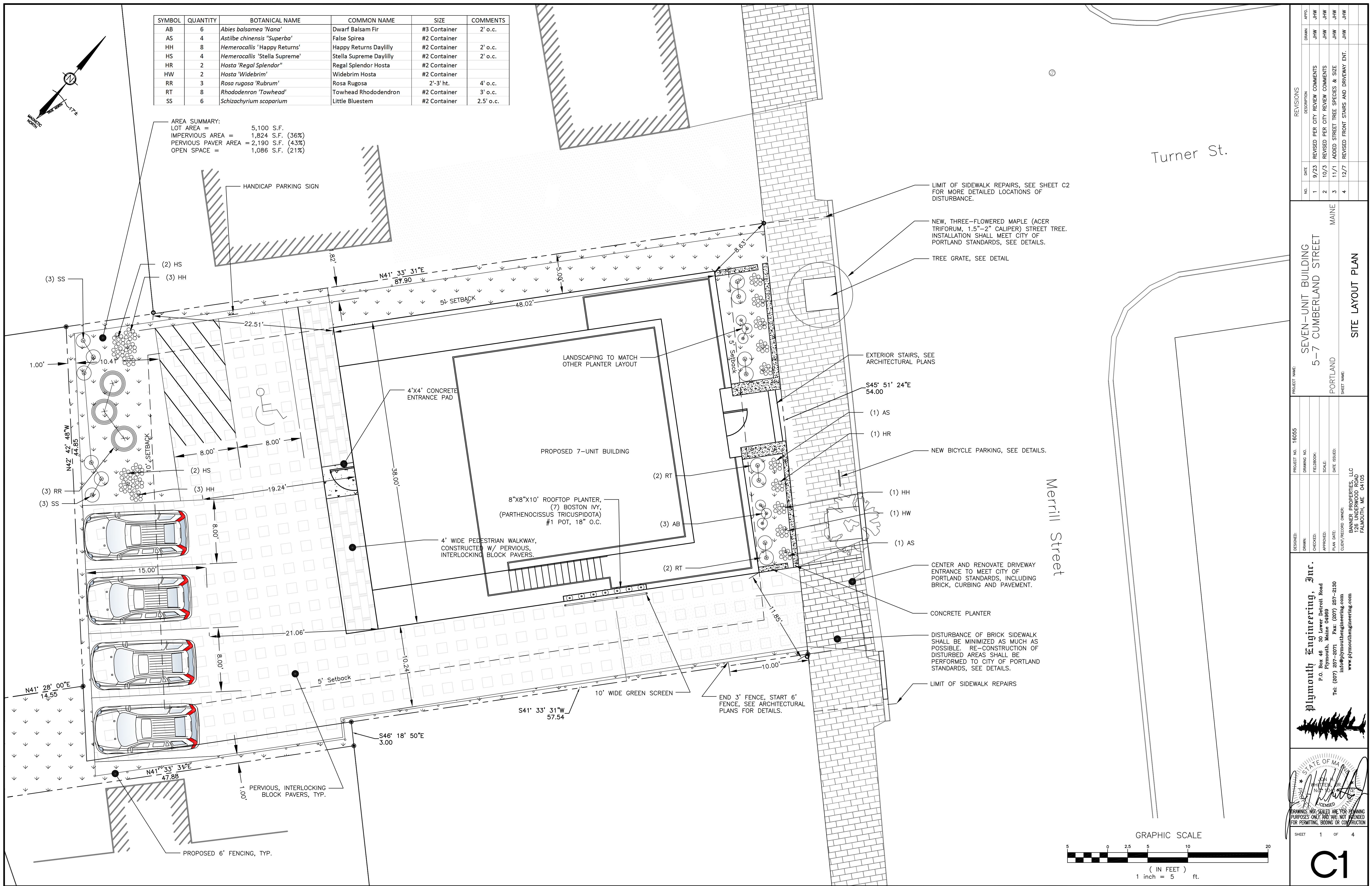


SYMBOL	QUANTITY	BOTANICAL NAME	COMMON NAME	SIZE	COMMENTS
AB	6	<i>Abies balsamea 'Nana'</i>	Dwarf Balsam Fir	#3 Container	2' o.c.
AS	4	<i>Astilbe chinensis 'Superba'</i>	False Spirea	#2 Container	
HH	8	<i>Hemerocallis 'Happy Returns'</i>	Happy Returns Daylily	#2 Container	2' o.c.
HS	4	<i>Hemerocallis 'Stella Supreme'</i>	Stella Supreme Daylily	#2 Container	2' o.c.
HR	2	<i>Hosta 'Regal Splendor'</i>	Regal Splendor Hosta	#2 Container	
HW	2	<i>Hosta 'Widebrim'</i>	Widebrim Hosta	#2 Container	
RR	3	<i>Rosa rugosa 'Rubrum'</i>	Rosa Rugosa	2'-3' ht.	4' o.c.
RT	8	<i>Rhododendron 'Towhead'</i>	Towhead Rhododendron	#2 Container	3' o.c.
SS	6	<i>Schizachyrium scoparium</i>	Little Bluestem	#2 Container	2.5' o.c.

AREA SUMMARY:
 LOT AREA = 5,100 S.F.
 IMPERVIOUS AREA = 1,824 S.F. (36%)
 PERVIOUS PAVER AREA = 2,190 S.F. (43%)
 OPEN SPACE = 1,086 S.F. (21%)



NO.	DATE	DESCRIPTION
1	9/23	REVISED PER CITY REVIEW COMMENTS
2	10/3	REVISED PER CITY REVIEW COMMENTS
3	11/1	ADDED STREET TREE SPECIES & SIZE
4	12/7	REVISED FRONT STAIRS AND DRIVEWAY ENT.

PROJECT NAME:
 SEVEN-UNIT BUILDING
 5-7 CUMBERLAND STREET
 PORTLAND
 SHEET NAME:
 SITE LAYOUT PLAN

PROJECT NO.: 16085
 DRAWING NO.:
 FIELDBOOK:
 SCALE:
 DATE ISSUED:
 CLIENT/RECORD OWNER:
 BANNER PROPERTIES, LLC
 18 UNDERWOOD ROAD
 FAIRBANKS, ME 04108

Plymouth Engineering, Inc.
 P.O. Box 48 30 Lower Detroit Road
 Plymouth, Maine 04989
 Tel: (207) 257-2071 Fax: (207) 257-2130
 info@plymouthengineering.com
 www.plymouthengineering.com

STATE OF MAINE
 REGISTERED PROFESSIONAL ENGINEER
 No. 10050
 JOHN S. BROWN
 DRAWINGS NOT SEALED ARE FOR PLANNING PURPOSES ONLY AND ARE NOT INTENDED FOR PERMITTING, BIDDING OR CONSTRUCTION

SHEET 1 OF 4
C1

