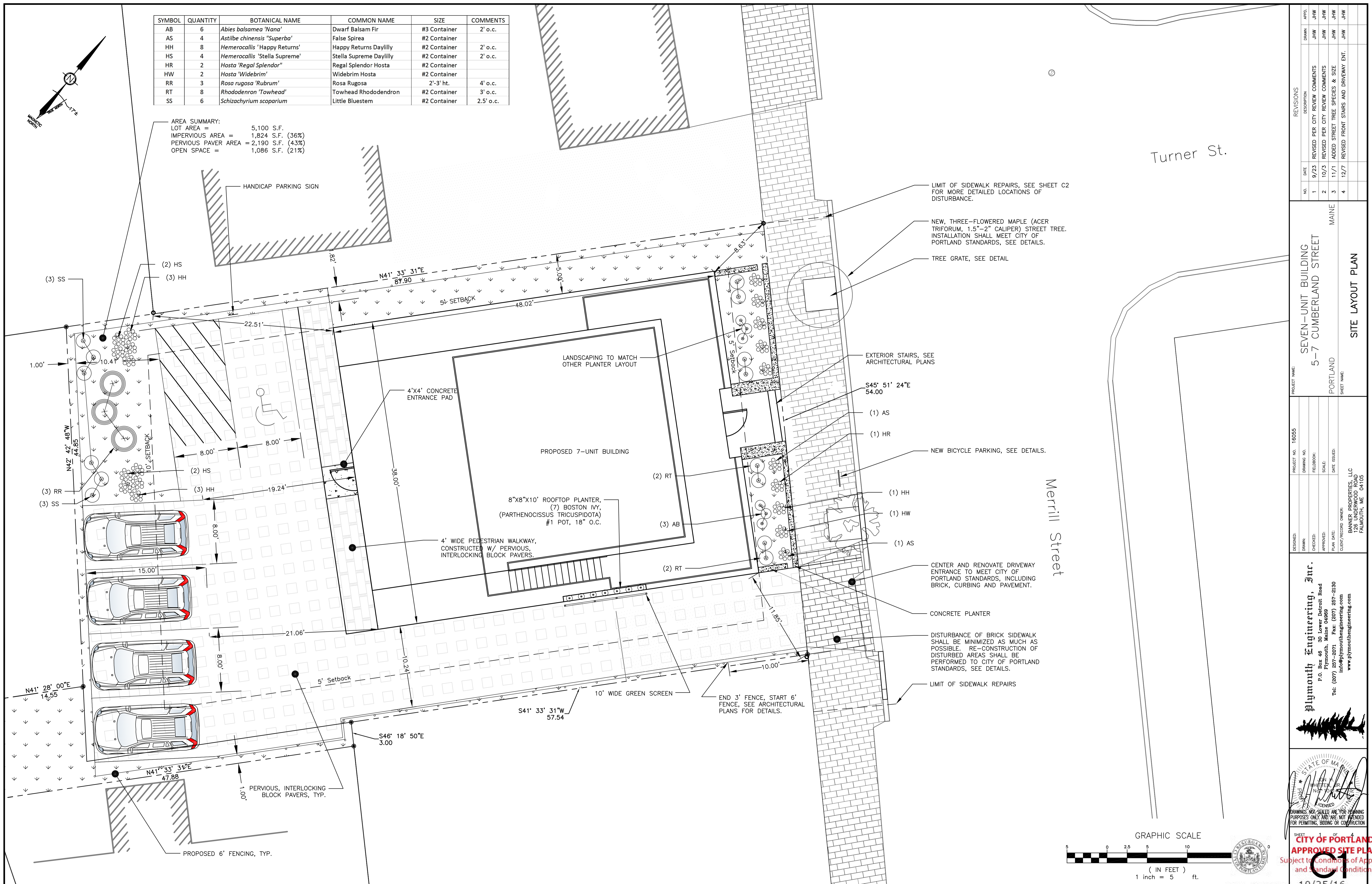


SYMBOL	QUANTITY	BOTANICAL NAME	COMMON NAME	SIZE	COMMENTS
AB	6	<i>Abies balsamea 'Nana'</i>	Dwarf Balsam Fir	#3 Container	2' o.c.
AS	4	<i>Astilbe chinensis 'Superba'</i>	False Spirea	#2 Container	
HH	8	<i>Hemerocallis 'Happy Returns'</i>	Happy Returns Daylily	#2 Container	2' o.c.
HS	4	<i>Hemerocallis 'Stella Supreme'</i>	Stella Supreme Daylily	#2 Container	2' o.c.
HR	2	<i>Hosta 'Regal Splendor'</i>	Regal Splendor Hosta	#2 Container	
HW	2	<i>Hosta 'Widebrim'</i>	Widebrim Hosta	#2 Container	
RR	3	<i>Rosa rugosa 'Rubrum'</i>	Rosa Rugosa	2'-3' ht.	4' o.c.
RT	8	<i>Rhododendron 'Towhead'</i>	Towhead Rhododendron	#2 Container	3' o.c.
SS	6	<i>Schizachyrium scoparium</i>	Little Bluestem	#2 Container	2.5' o.c.

AREA SUMMARY:
 LOT AREA = 5,100 S.F.
 IMPERVIOUS AREA = 1,824 S.F. (36%)
 PERVIOUS PAVER AREA = 2,190 S.F. (43%)
 OPEN SPACE = 1,086 S.F. (21%)



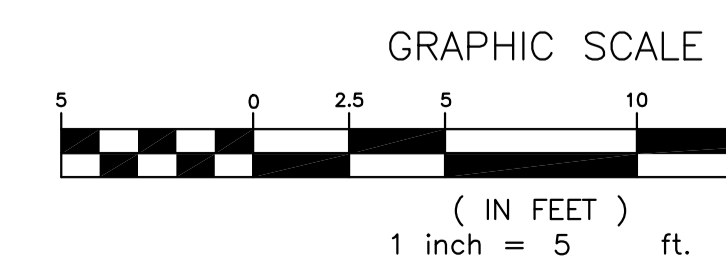
NO.	DATE	DESCRIPTION
1	9/23	REVISED PER CITY REVIEW COMMENTS
2	10/3	REVISED PER CITY REVIEW COMMENTS
3	11/1	ADDED STREET TREE SPECIES & SIZE
4	12/7	REVISED FRONT STAIRS AND DRIVEWAY ENT.

PROJECT NAME: SEVEN-UNIT BUILDING
 5-7 CUMBERLAND STREET
 PORTLAND, MAINE
 SHEET NAME: SITE LAYOUT PLAN

PROJECT NO.: 16055
 DRAWING NO.:
 FIELDBOOK:
 SCALE:
 DATE ISSUED:
 CLIENT/RECORD OWNER:
 BANNER PROPERTIES, LLC
 700 BROADWAY
 FALMOUTH, ME 04103

Plymouth Engineering, Inc.
 P.O. Box 46
 30 Lower Detroit Road
 Plymouth, Maine 04989
 Tel: (207) 257-2071 Fax: (207) 257-2130
 info@plymouthengineering.com
 www.plymouthengineering.com

STATE OF MAINE
 PROFESSIONAL SEAL
 CITY OF PORTLAND
 APPROVED SITE PLAN
 Subject to conditions of Approval and Standard Conditions
 SHEET 1 OF 4



DATE OF APPROVAL: 10/25/16
 PLANNER: Nell Donaldson
 PROJECT NO.: 2016-172