

COPYRIGHT: Reuse or reproduction of the contents of this document is not permitted without written permission of Bild Architecture LLC

MAX WALL OPENING					
ELEVATION	SEPARATION DISTANCE	NFPA SPRINKLERED	PROTECTED OPENINGS	ALLOWABLE AREA	% OF WALL OPENING
NORTH	5' TO 10'	YES	NO	25%	13%
NORTH ROOF	20' TO 25'	YES	NO	NO LIMIT	-
EAST	30' OR GREATER	YES	NO	N/A	-
SOUTH	10' TO 15'	YES	NO	45%	13%
WEST	30' OR GREATER	YES	NO	N/A	-

GENERAL DOOR SCHEDULE NOTES:

- ALL DOOR HANDLES TO BE ADA COMPLIANT LEVER HANDLES.
- ALL INTERIOR DOOR HARDWARE FINISH TBD
- DOORS WITHIN UNITS FINISH TBD
- PROVIDE A COMMON SPACES KEY FOR TENANT ENTRANCES AND STORAGE AREA (ISSUED TO EACH TENANT)

HARDWARE SETS:

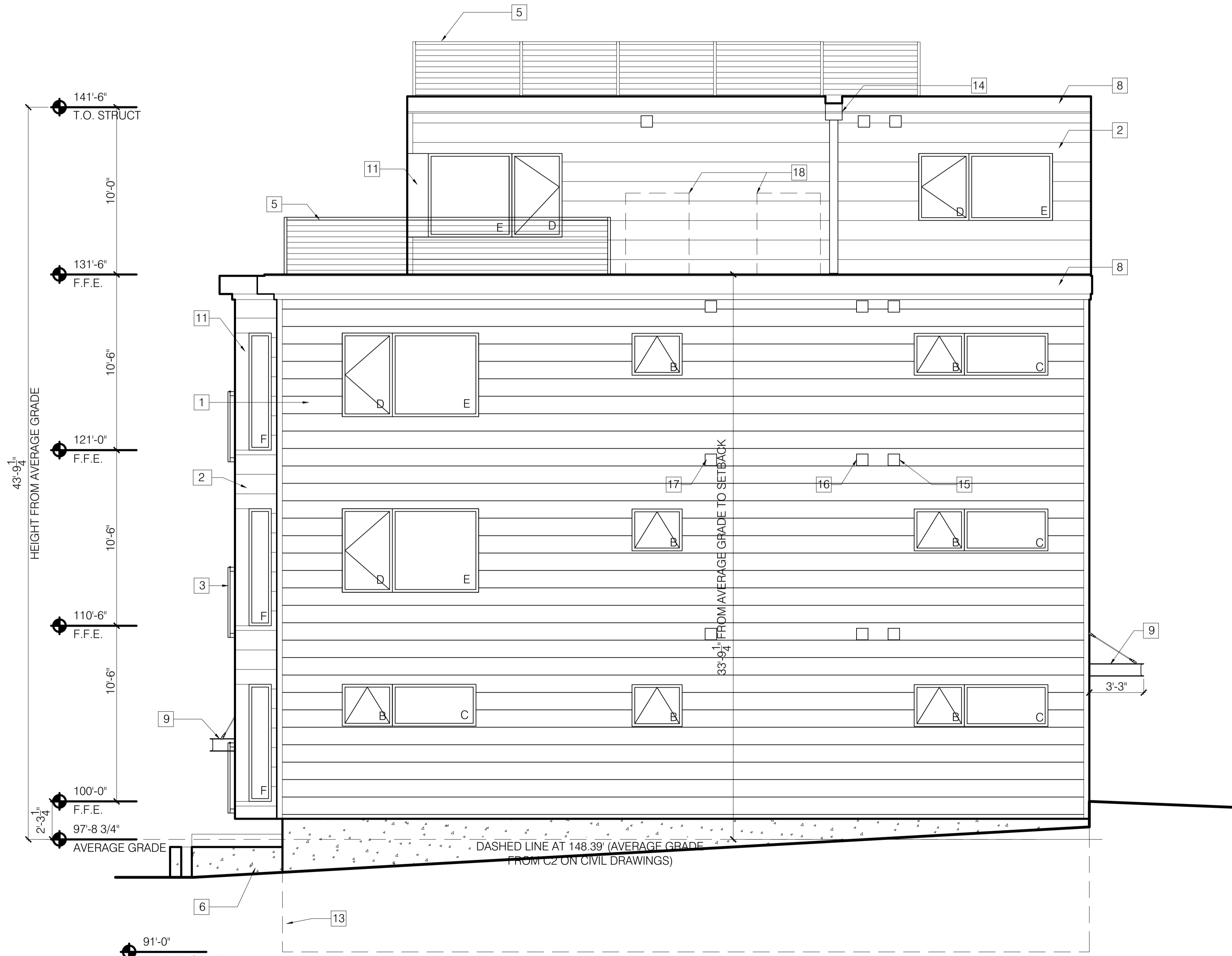
- 01 UNIT ENTRY DOORS: PEEP HOLE, (3) HINGES, SOFT CLOSE DAMPER, STRIKE, DOOR STOP, SINGLE CYLINDER DEADBOLT, ENTRY LOCKSET, THROW-BOLT, LATCH ASSEMBLY, LEVER, CLOSER, THRESHOLD, SWEEP
- 02 BATHROOM DOORS: (3) HINGES, STRIKE, DOOR STOP, LEVER, BED/BATH LOCKSET
- 03 PATIO DOORS: (3) HINGES, ESCUTCHEON PLATE, HANDLE, DEADBOLT LOCKSET
- 04 ENTRY DOOR: (3) HINGES, STRIKE, DOOR STOP, THRESHOLD, SWEEP, ENTRY LOCKSET, GASKET, LEVER, METAL PROTECTIVE TRIM, PEEP HOLE, CLOSER
- 05 EXTERIOR STORAGE DOOR (3) HINGES, STRIKE, THRESHOLD, SWEEP, ENTRY LOCKSET, GASKET, LEVER, METAL PROTECTIVE TRIM, PEEP HOLE, CLOSER
- 06 STAIRWAY/HALLWAY DOOR (3) HINGES, SOFT CLOSE DAMPER, STRIKE, DOOR STOP, FREE PASSAGE LATCH ASSEMBLY, LEVER, CLOSER
- 07 STORAGE DOOR: (3) HINGES, STRIKE, LOCKSET, LEVER, CLOSER

GENERAL NOTES:

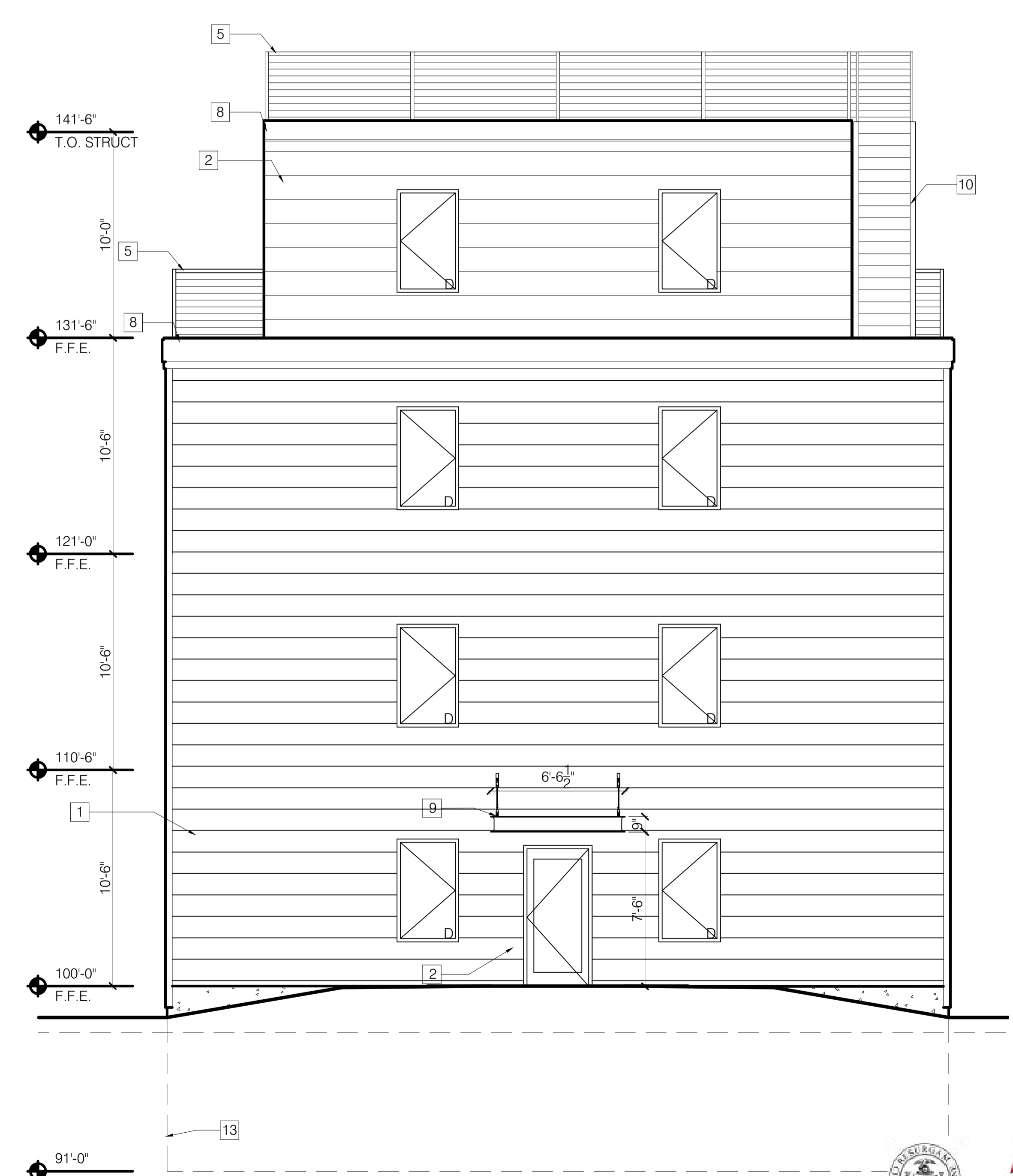
- A. GLAZING IN ALL DOORS IS REQUIRED TO BE SAFETY GLAZING
- B. FINAL FINISHES TO BE SELECTED BY OWNER.
- C. ---
- D. ---

KEYNOTES:

- 1. LP SMART SIDING - SMOOTH FINISH - CLAPBOARD - 11.84 WIDTH - COLOR 1
- 2. LP SMART SIDING - SMOOTH FINISH - CLAPBOARD - 11.84 WIDTH - COLOR 2
- 3. FABRICATED METAL GUARD SYSTEM CONSTRUCTED OH HSS
- 4. -
- 5. HANDRAIL W/ 42" HISS HSS GUARDRAIL W/ HORIZONTAL STEEL RODS @ 3 1/2" O.C.
- 6. CONCRETE PLANTER
- 7. BUILDING ADDRESS FORMED INTO CONCRETE
- 8. GALVANIZED FINISHED BREAK METAL COPING
- 9. FABRICATED METAL AWNING WITH METAL ROD SUPPORTS
- 10. FABRICATED METAL STAIR W/ 36" 111-1/2" HSS RAILINGS AND HORZ STEEL RODS @ 3-1/2" O.C.
- 11. BREAK METAL WINDOW TRIM DETAIL
- 12. LINE OF ROOF BEYOND
- 13. LINE REPRESENTS BASEMENT BELOW GRADE
- 14. DOWNSPOUT
- 15. DRYER VENT
- 16. HVAC EXHAUST
- 17. HVAC INTAKE
- 18. LOCATION FOR INSTALLATION OF HEAT PUMP UNITS
- 19. FABRICATED METAL GREEN SCREEN FOR IVY
- 20. VERTICAL SIDING BEHIND SCREEN



1 NORTH ELEVATION SCALE: 1/4" = 1'-0"



2 BACK (WEST) ELEVATION SCALE: 1/4" = 1'-0"

REVISIONS
1
2
3
4
5

SITE APPLICATION NOT FOR CONSTRUCTION

ISSUE DATE **10/18/16**
 DRAWN BY **EMW**
 SHEET TITLE **ELEVATIONS**
 SHEET SCALE **1/4" = 1'-0"**



CITY OF PORTLAND APPROVED SITE PLAN
 Subject to Conditions of Approval and Standard Conditions

2.2