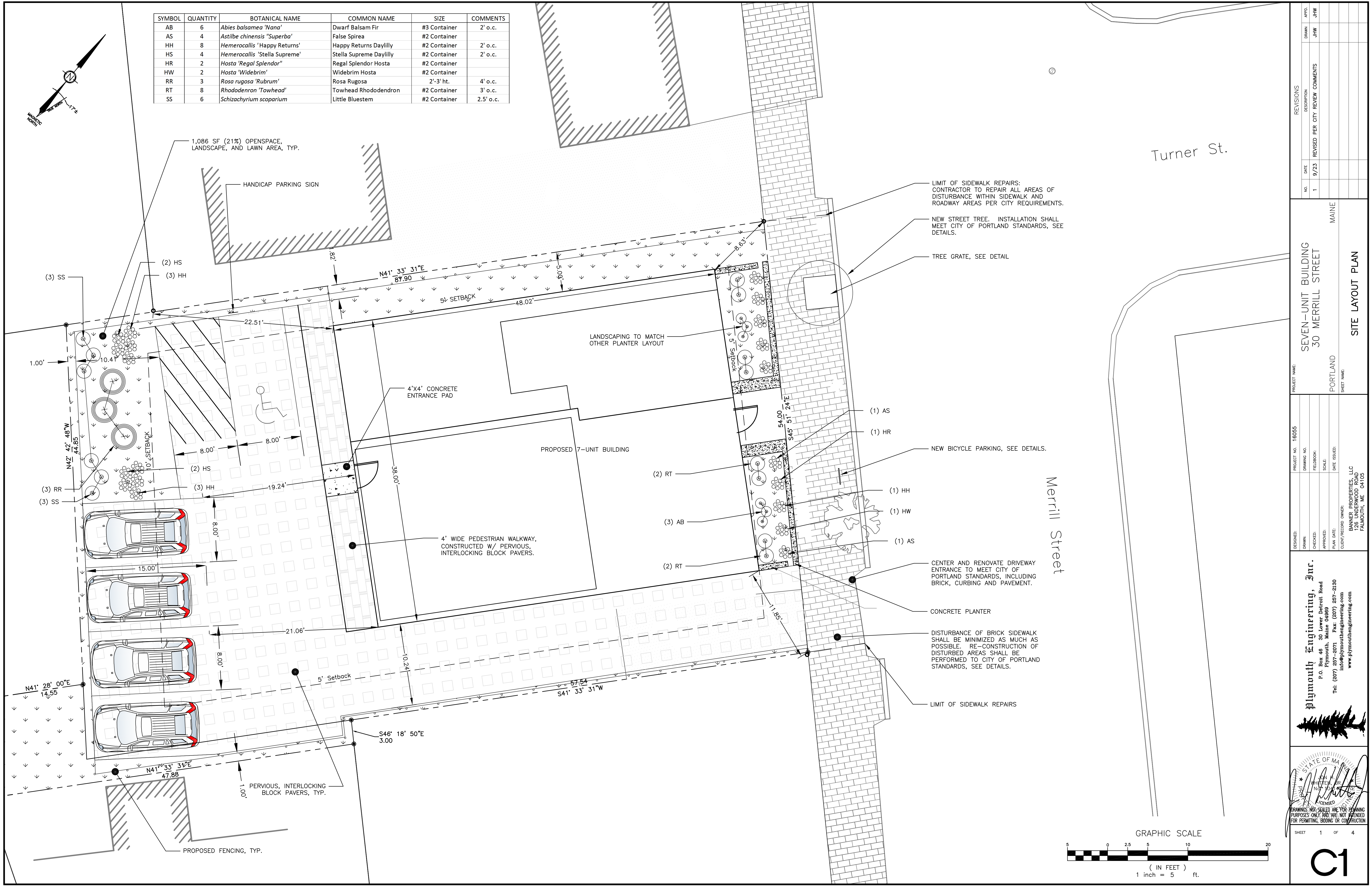


SYMBOL	QUANTITY	BOTANICAL NAME	COMMON NAME	SIZE	COMMENTS
AB	6	<i>Abies balsamea 'Nana'</i>	Dwarf Balsam Fir	#3 Container	2' o.c.
AS	4	<i>Astilbe chinensis 'Superba'</i>	False Spirea	#2 Container	2' o.c.
HH	8	<i>Hemerocallis 'Happy Returns'</i>	Happy Returns Daylily	#2 Container	2' o.c.
HS	4	<i>Hemerocallis 'Stella Supreme'</i>	Stella Supreme Daylily	#2 Container	2' o.c.
HR	2	<i>Hosta 'Regal Splendor'</i>	Regal Splendor Hosta	#2 Container	2' o.c.
HW	2	<i>Hosta 'Widebrim'</i>	Widebrim Hosta	#2 Container	2' o.c.
RR	3	<i>Rosa rugosa 'Rubrum'</i>	Rosa Rugosa	2'-3' ht.	4' o.c.
RT	8	<i>Rhododendron 'Towhead'</i>	Towhead Rhododendron	#2 Container	3' o.c.
SS	6	<i>Schizachyrium scoparium</i>	Little Bluestem	#2 Container	2.5' o.c.



NO.	DATE	DESCRIPTION
1	9/23	REVISED PER CITY COMMENTS

PROJECT NAME: SEVEN-UNIT BUILDING
30 MERRILL STREET
PORTLAND, MAINE

PROJECT NO: 16055
DRAWING NO:
FIELDBOOK:
SCALE:
DATE ISSUED:
CLIENT/RECORD OWNER: BANNER PROPERTIES, LLC
30 UNDERWOOD ROAD
FAIRBANKS, ME 04740

Plymouth Engineering, Inc.
P.O. Box 46 30 Lower Detroit Road
Plymouth, Maine 04989
Tel: (207) 257-2071 Fax: (207) 257-2130
info@plymouthengineering.com
www.plymouthengineering.com

STATE OF MAINE
Professional Engineer
No. 12345
Date: 9/23/2023

DRRAWINGS NOT SEALED ARE FOR PLANNING PURPOSES ONLY AND ARE NOT INTENDED FOR PERMITTING, BIDDING OR CONSTRUCTION

SHEET 1 OF 4

C1

