

MAX WALL OPENING					
ELEVATION	SEPARATION DISTANCE	NFPA SPRINKLERED	PROTECTED OPENINGS	ALLOWABLE AREA	% OF WALL OPENING
NORTH	5' TO 10'	YES	NO	25%	13%
NORTH ROOF	20' TO 25'	YES	NO	NO LIMIT	-
EAST	30' OR GREATER	YES	NO	N/A	-
SOUTH	10' TO 15'	YES	NO	45%	13%
WEST	30' OR GREATER	YES	NO	N/A	-

**GENERAL DOOR SCHEDULE NOTES:**

- ALL DOOR HANDLES TO BE ADA COMPLIANT LEVER HANDLES.
- ALL INTERIOR DOOR HARDWARE FINISH TBD
- DOORS WITHIN UNITS FINISH TBD
- PROVIDE A COMMON SPACES KEY FOR TENANT ENTRANCES AND STORAGE AREA (ISSUED TO EACH TENANT)

**HARDWARE SETS:**

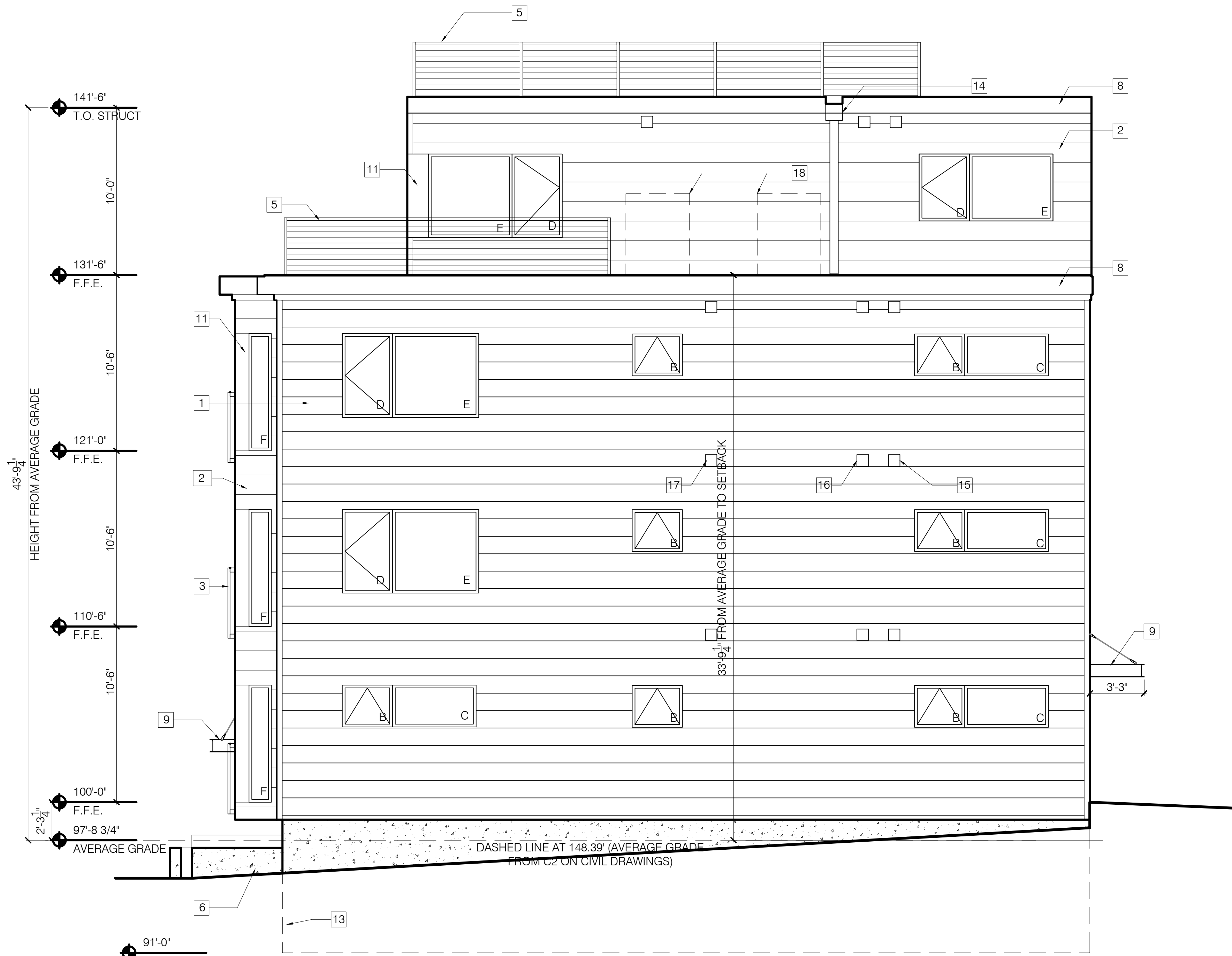
- |    |                       |   |
|----|-----------------------|---|
| 01 | UNIT ENTRY DOORS:     | PEEP HOLE, (3) HINGES, SOFT CLOSE DAMPER, STRIKE, DOOR STOP, SINGLE CYLINDER DEADBOLT, ENTRY LOCKSET, THROW-BOLT, LATCH ASSEMBLY, LEVER, CLOSER, THRESHOLD, SWEEP |
| 02 | BATHROOM DOORS:       | (3) HINGES, STRIKE, DOOR STOP, LEVER, BED/BATH LOCKSET  |
| 03 | PATIO DOORS:          | (3) HINGES, ESCUTCHEON PLATE, HANDLE, DEADBOLT LOCKSET  |
| 04 | ENTRY DOOR:           | (3) HINGES, STRIKE, DOOR STOP, THRESHOLD, SWEEP, ENTRY LOCKSET, GASKET, LEVER, METAL PROTECTIVE TRIM, PEEP HOLE CLOSER  |
| 05 | EXTERIOR STORAGE DOOR | (3) HINGES, STRIKE, THRESHOLD, SWEEP, ENTRY LOCKSET, GASKET, LEVER, METAL PROTECTIVE TRIM, PEEP HOLE, CLOSER  |
| 06 | STAIRWAY/HALLWAY DOOR | (3) HINGES, SOFT CLOSE DAMPER, STRIKE, DOOR STOP, FREE PASSAGE LATCH ASSEMBLY, LEVER, CLOSER  |
| 07 | STORAGE DOOR:         | (3) HINGES, STRIKE, LOCKSET, LEVER, CLOSER  |

**GENERAL NOTES:**

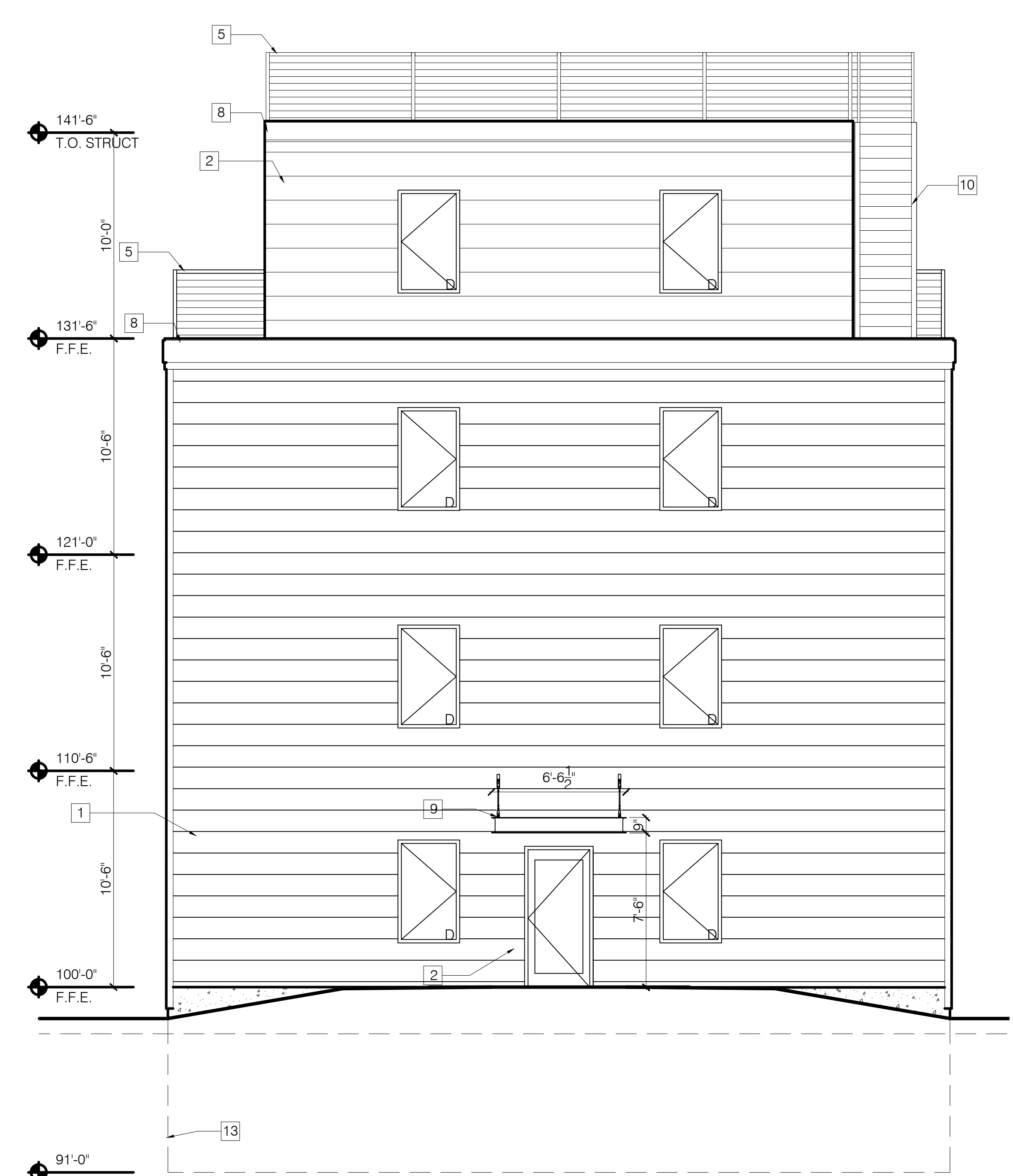
- A. GLAZING IN ALL DOORS IS REQUIRED TO BE SAFETY GLAZING
- B. FINAL FINISHES TO BE SELECTED BY OWNER.
- C. ---
- D. ---

**KEYNOTES:**

- 1. LP SMART SIDING - SMOOTH FINISH - CLAPBOARD - 11.84 WIDTH - COLOR 1
- 2. LP SMART SIDING - SMOOTH FINISH - CLAPBOARD - 11.84 WIDTH - COLOR 2
- 3. FABRICATED METAL GUARD SYSTEM CONSTRUCTED OH HSS
- 4. -
- 5. HANDRAIL W/ 42" HISS HSS GUARDRAIL W/ HORIZONTAL STEEL RODS @ 3 1/2" O.C.
- 6. CONCRETE PLANTER
- 7. BUILDING ADDRESS FORMED INTO CONCRETE
- 8. GALVANIZED FINISHED BREAK METAL COPING
- 9. FABRICATED METAL AWNING WITH METAL ROD SUPPORTS
- 10. FABRICATED METAL STAIR W/ 36" 11-1/2" HSS RAILINGS AND HORZ STEEL RODS @ 3-1/2" O.C.
- 11. BREAK METAL WINDOW TRIM DETAIL
- 12. LINE OF ROOF BEYOND
- 13. LINE REPRESENTS BASEMENT BELOW GRADE
- 14. DOWNSPOUT
- 15. DRYER VENT
- 16. HVAC EXHAUST
- 17. HVAC INTAKE
- 18. LOCATION FOR INSTALLATION OF HEAT PUMP UNITS
- 19. FABRICATED METAL GREEN SCREEN FOR IVY
- 20. VERTICAL SIDING BEHIND SCREEN



1 NORTH ELEVATION  
SCALE: 1/4" = 1'-0"



2 BACK (WEST) ELEVATION  
SCALE: 1/4" = 1'-0"

**Bild Architecture**  
PO Box 8235  
Portland, ME  
04104  
207.408.0168  
evan@bildarchitecture.com

**PROJECT NO.**  
15018

**PROJECT NAME**  
MERRILL STREET  
PORTLAND, ME

**REVISIONS**

1	
2	
3	
4	
5	

**SITE APPLICATION**  
NOT FOR CONSTRUCTION

**ISSUE DATE**  
10/18/16

**DRAWN BY**  
EMW

**SHEET SCALE**  
1/4" = 1'-0"

**SHEET TITLE**  
ELEVATIONS

A

2.2