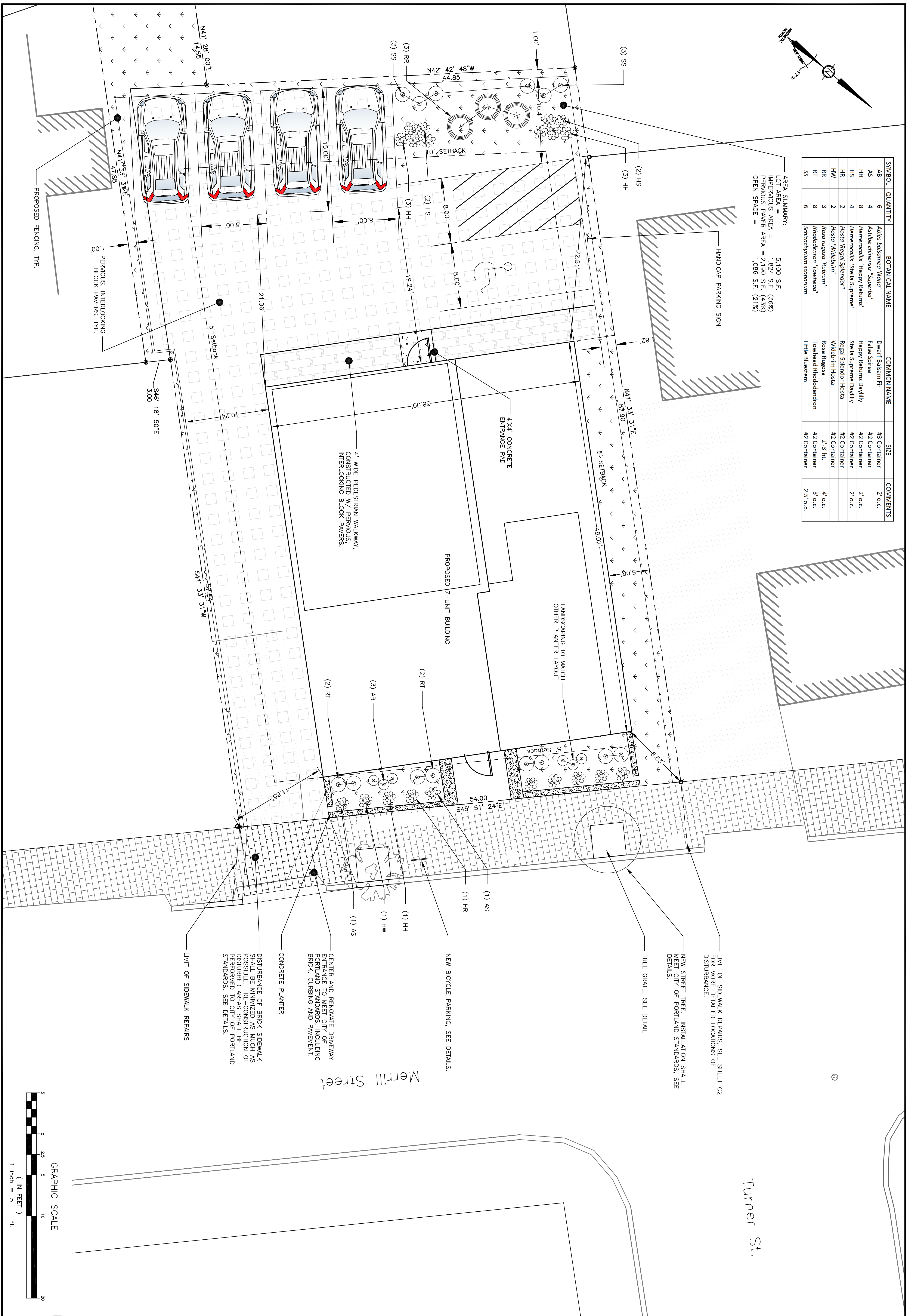


SYMBOL	QUANTITY	BOTANICAL NAME	COMMON NAME	SIZE	COMMENTS
AB	6	<i>Abies balsamea</i> 'Mill'	Dwarf Balsam Fir	#3 Container	2' o.c.
AS	4	<i>Astilbe chinensis</i> 'Superba'	False Spirea	#2 Container	2' o.c.
HH	8	<i>Hemerocallis</i> 'Happy Returns'	Happy Returns Daylily	#2 Container	2' o.c.
HS	4	<i>Hemerocallis</i> 'Stella Supreme'	Stella Supreme Daylily	#2 Container	2' o.c.
HR	2	<i>Hosta</i> 'Regal Splendor'	Regal Splendor Hosta	#2 Container	2' o.c.
HW	2	<i>Hosta</i> 'Widebrim'	Widebrim Hosta	#2 Container	2'-3" H.
RR	3	<i>Rosa rugosa</i> 'Rubrum'	Rosa Rugosa	#2 Container	4' o.c.
RT	8	<i>Rhododendron</i> 'Tomweed'	Tomweed Rhododendron	#2 Container	3' o.c.
SS	6	<i>Schizachyrium scoparium</i>	Little Bluestem	#2 Container	2.5' o.c.

AREA SUMMARY:
 LOT AREA = 5,100 S.F.
 IMPERVIOUS AREA = 1,824 S.F. (36%)
 PERVIOUS PAVEMENT AREA = 2,190 S.F. (43%)
 OPEN SPACE = 1,086 S.F. (21%)



LIMIT OF SIDEWALK REPAIRS. SEE SHEET C2 FOR MORE DETAILED LOCATIONS OF DISTURBANCE.

NEW STREET TREE. INSTALLATION SHALL MEET CITY OF PORTLAND STANDARDS. SEE DETAILS.

TREE GRATE. SEE DETAIL

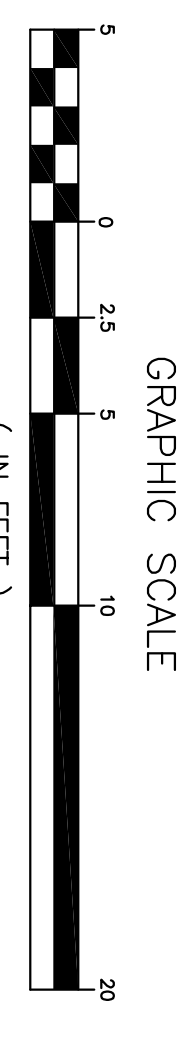
NEW BICYCLE PARKING. SEE DETAILS.

CENTER AND RENOVATE DRIVEWAY ENTRANCE TO MEET CITY OF PORTLAND STANDARDS, INCLUDING BRICK, CURBING AND PAVEMENT.

CONCRETE PLANTER

DISTURBANCE OF BRICK SIDEWALK SHALL BE MINIMIZED AS MUCH AS POSSIBLE. AREAS SHALL BE PERFORMED TO CITY OF PORTLAND STANDARDS. SEE DETAILS.

LIMIT OF SIDEWALK REPAIRS



STATE OF MAINE
 REGISTERED PROFESSIONAL ENGINEER
 No. 10000
 PLYMOUTH ENGINEERING, INC.
 10000
 10000
 10000

Plymouth Engineering, Inc.
 P.O. Box 46 30 Lower Detroit Road
 Plymouth, Maine 04969
 Tel: (207) 257-2071 Fax: (207) 257-2130
 info@plymouthengineering.com
 www.plymouthengineering.com

DESIGNED: PROJECT NO. 16055
 DRAWN: DRAWING NO.
 CHECKED: FIELDBOOK
 APPROVED: SCALE:
 PLAN DATE: DATE ISSUED:
 CLIENT/RECORD OWNER:
 BANNER PROPERTIES, LLC
 126 UNDERWOOD ROAD
 FALMOUTH, ME 04105

PROJECT NAME:
**SEVEN-UNIT BUILDING
 30 MERRILL STREET**
 PORTLAND MAINE
 SHEET NAME:
SITE LAYOUT PLAN

REVISIONS				
NO.	DATE	DESCRIPTION	DRAWN	APPD.
1	9/23	REVISED PER CITY REVIEW COMMENTS	JHW	JHW
2	10/3	REVISED PER CITY REVIEW COMMENTS	JHW	JHW

C1

ERROR: syntaxerror
OFFENDING COMMAND: --nostringval--

STACK:

/Title
()
/Subject
(D:20161003115509-04'00')
/ModDate
()
/Keywords
(PDFCreator Version 0.9.5)
/Creator
(D:20161003115509-04'00')
/CreationDate
(Jon Whitten)
/Author
-mark-