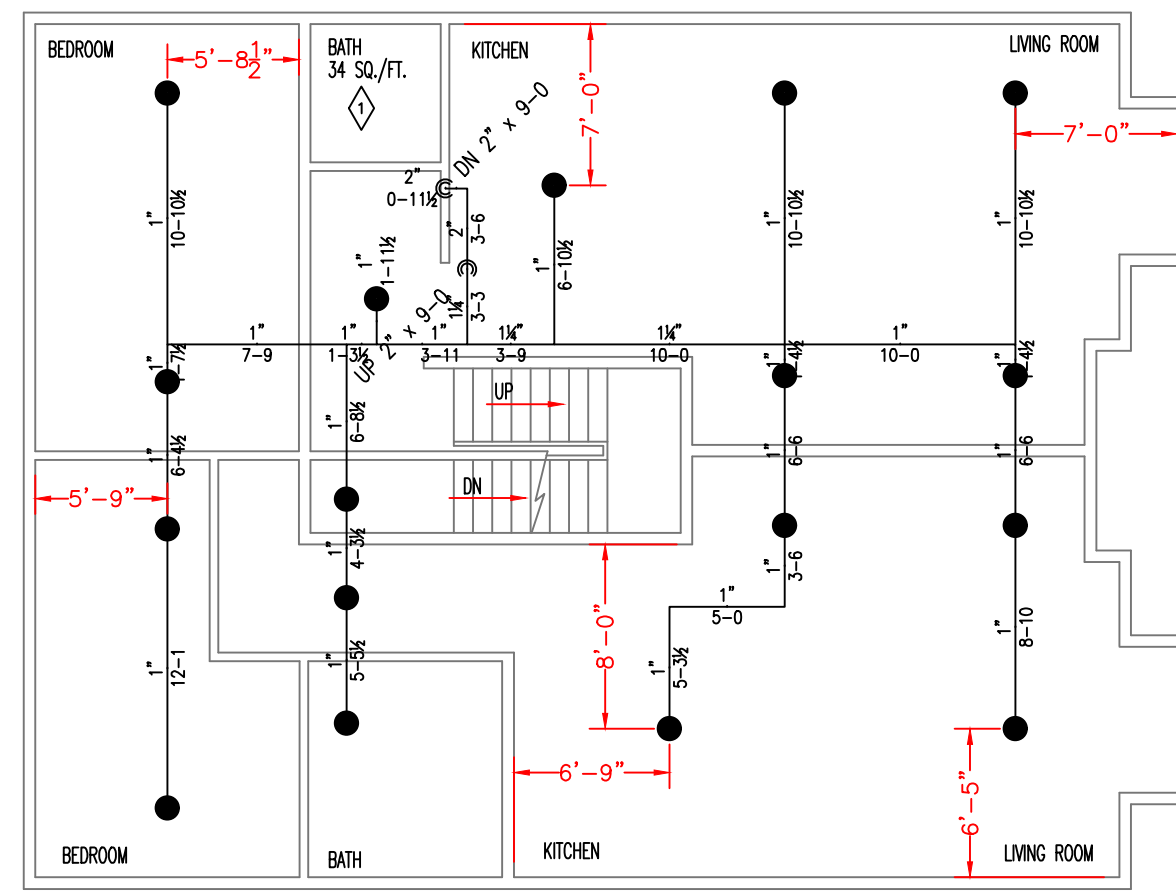
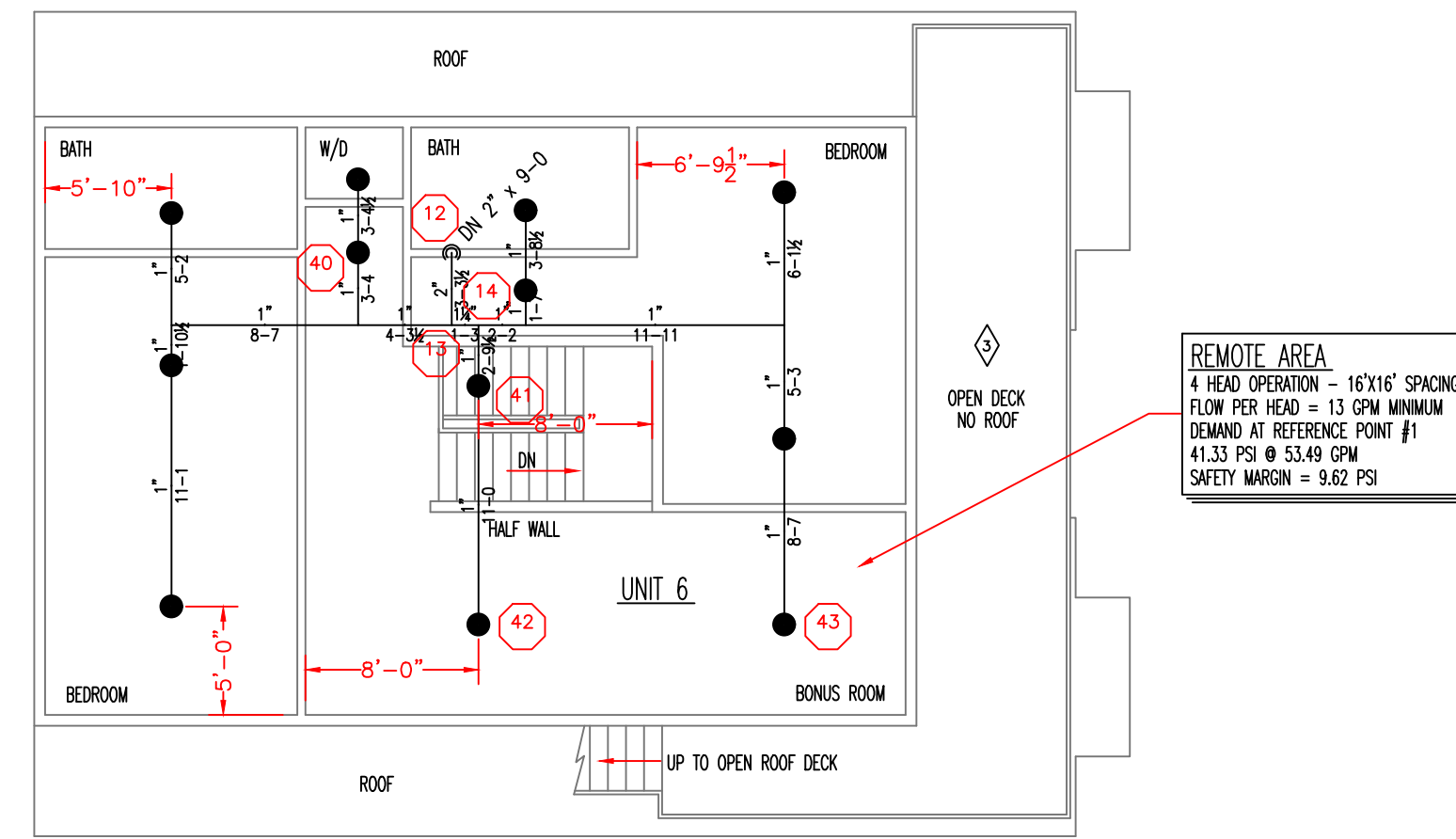


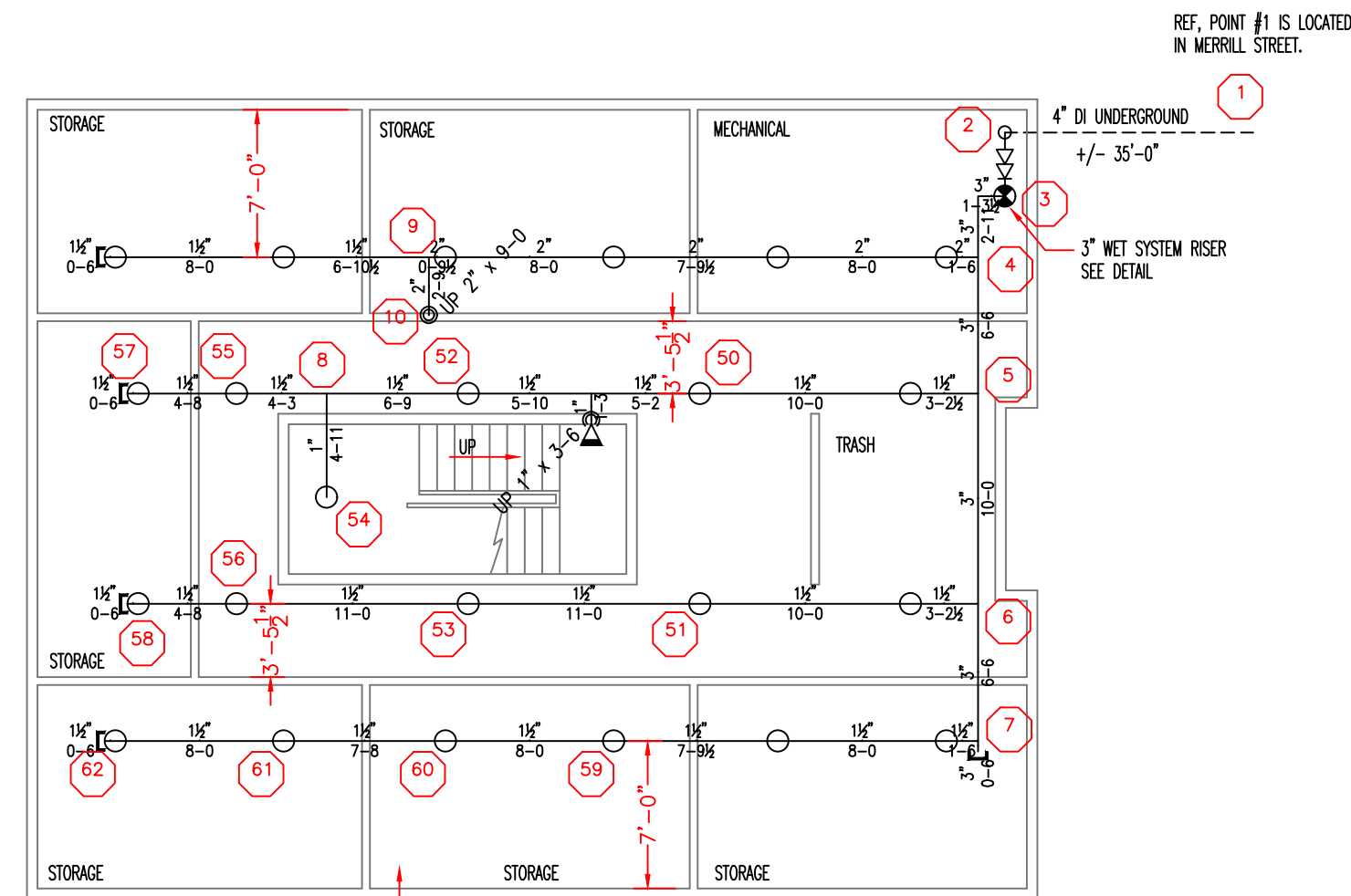
SECOND FLOOR PLAN



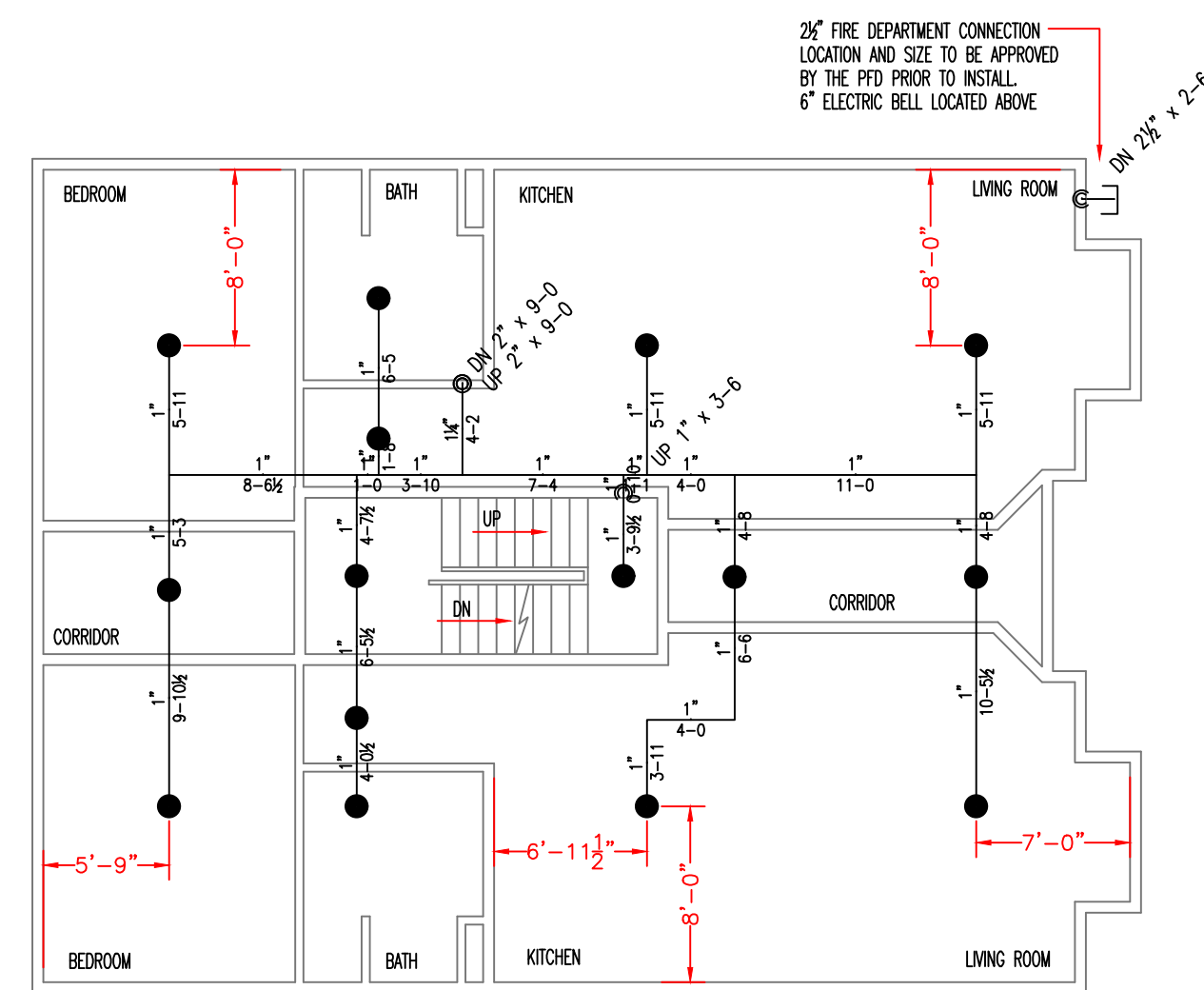
THIRD FLOOR PLAN



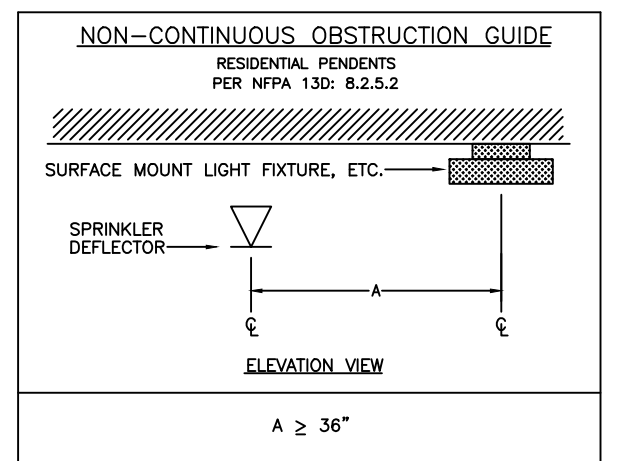
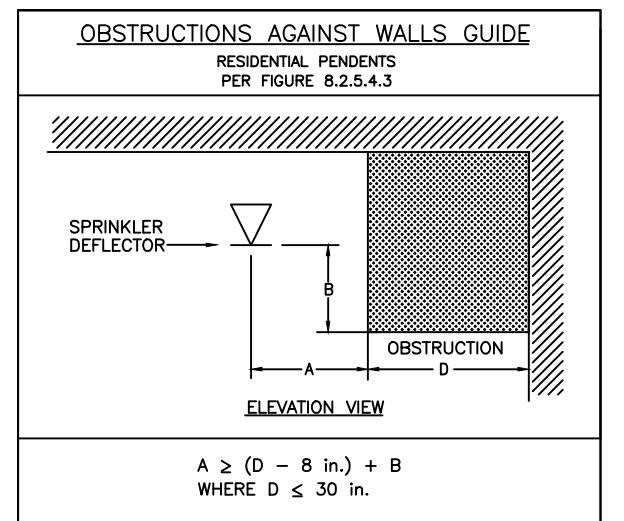
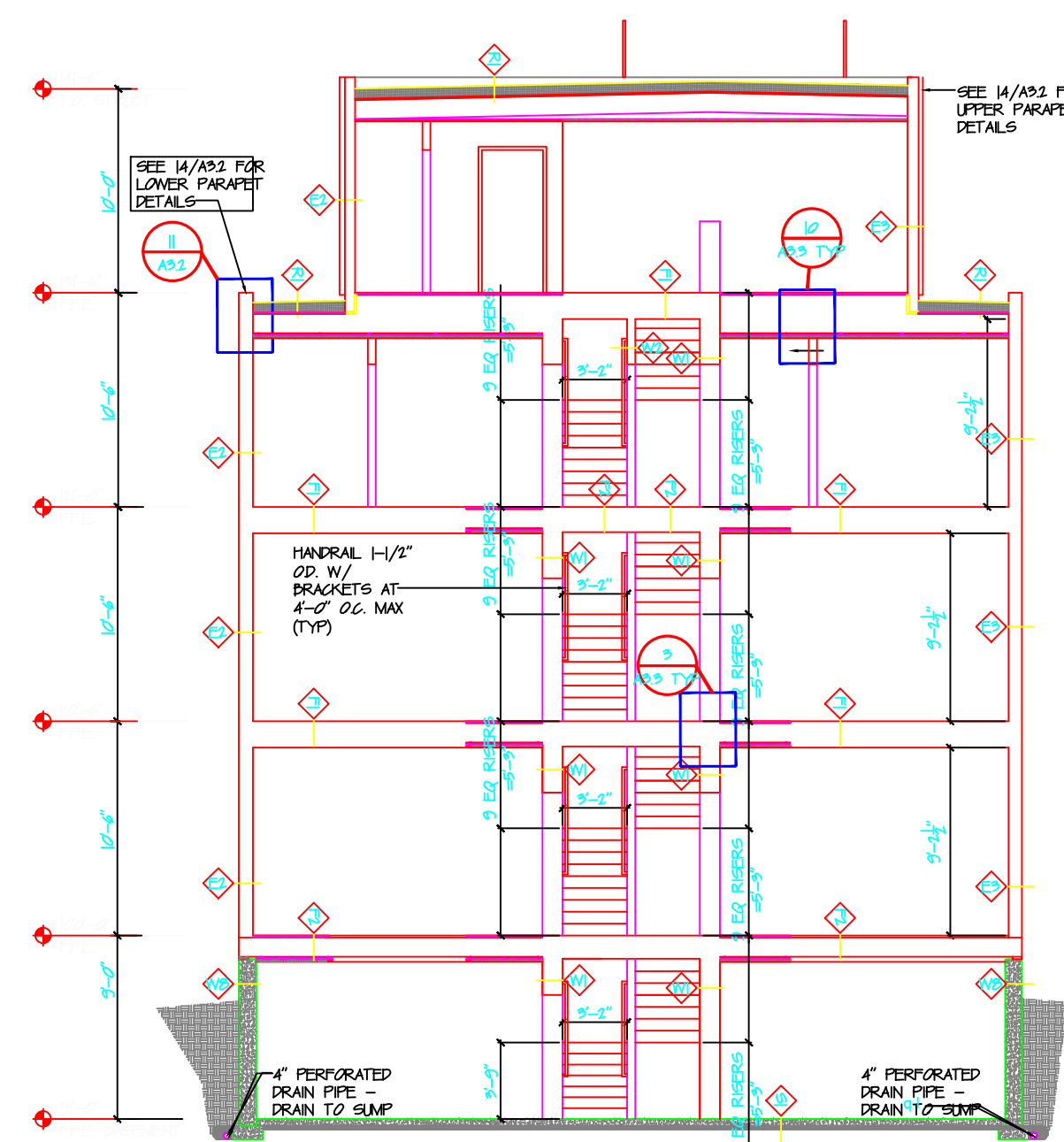
FOURTH FLOOR PLAN



BASEMENT PLAN

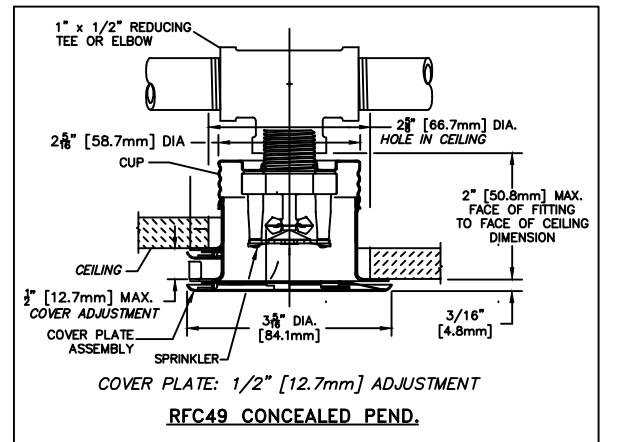


FIRST FLOOR PLAN

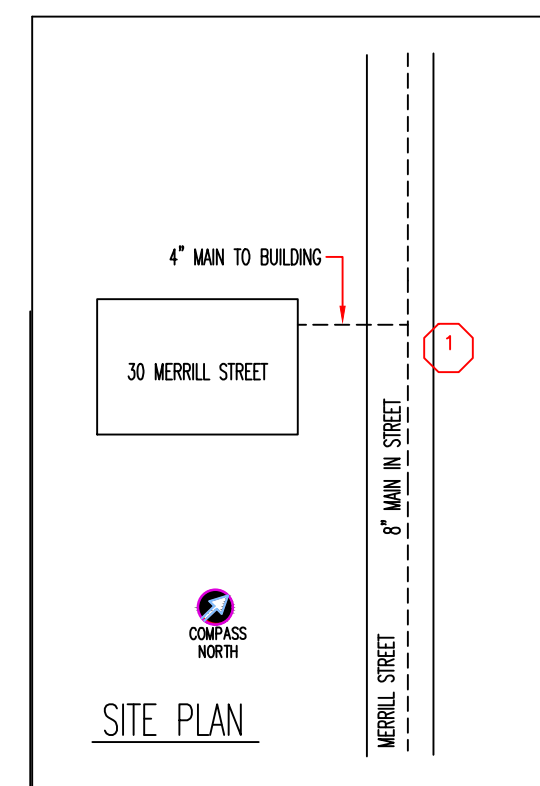
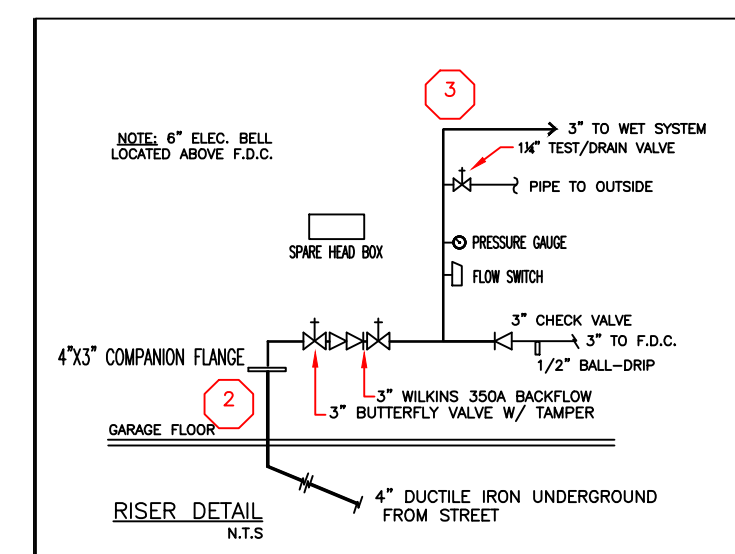
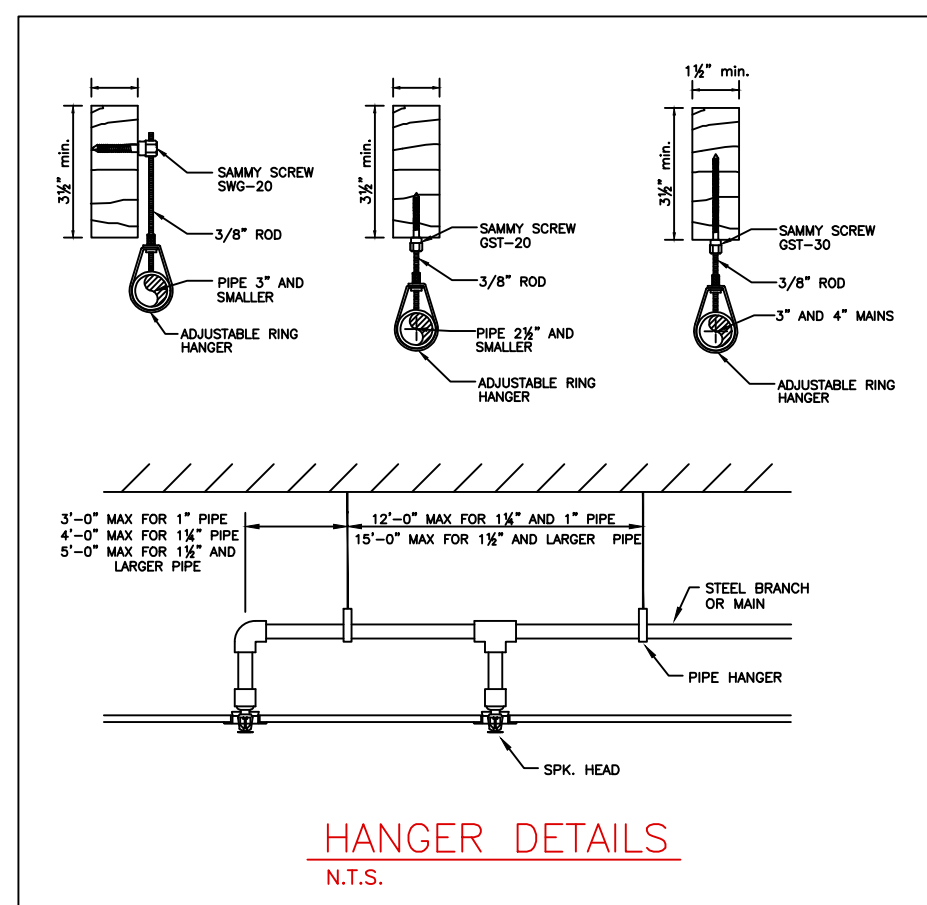


CONTINUOUS OBSTRUCTION GUIDE
RESIDENTIAL PENDENTS AS PER TABLE 8.8.5.1.2

DISTANCE FROM SPRINKLERS FROM SIDE OF OBSTRUCTION (A)	MAXIMUM ALLOWABLE DISTANCE OF DEFLECTOR ABOVE BOTTOM OF OBSTRUCTION (IN.) (B)
LESS THAN 1 FT.	0
1 FT. TO LESS THAN 1 FT. 6 IN.	0
1 FT. 6 IN. TO LESS THAN 2 FT.	1
2 FT. TO LESS THAN 2 FT. 6 IN.	1
2 FT. 6 IN. TO LESS THAN 3 FT.	1
3 FT. TO LESS THAN 3 FT. 6 IN.	3
3 FT. 6 IN. TO LESS THAN 4 FT.	3
4 FT. TO LESS THAN 4 FT. 6 IN.	5
4 FT. 6 IN. TO LESS THAN 5 FT.	7
5 FT. TO LESS THAN 5 FT. 6 IN.	7
5 FT. 6 IN. TO LESS THAN 6 FT.	7
6 FT. TO LESS THAN 6 FT. 6 IN.	9
6 FT. 6 IN. TO LESS THAN 7 FT.	11
7 FT. AND GREATER	14



FLOW TEST INFORMATION
TEST PERFORMED: 5/2015
BY: PORTLAND WATER DEPARTMENT
STATIC/RESIDUAL HYDRANT LOCATION: CONGRESS & LAWRENCE
STATIC READINGS: 51 PSI
RESIDUAL READINGS: 44 PSI
FLOWING HYDRANT LOCATION: CONGRESS
FLOW READINGS: 919 GPM



KEYED NOTES

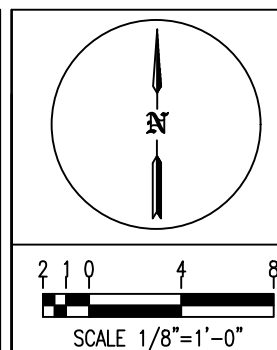
- SPRINKLERS ARE NOT REQUIRED IN BATHROOMS UNDER 55 FT² PER NFPA 13R:6.6.2
- SPRINKLERS ARE NOT REQUIRED IN CLOTHES CLOSETS AND PANTRIES UNDER 24 SQ. FT. PER NFPA 13R:6.6.3
- SPRINKLERS ARE NOT REQUIRED IN OPEN PORCHES OR STAIRS PER NFPA 13R:6.6.5
- SPRINKLERS ARE NOT REQUIRED IN ATTICS, CRAWL SPACES, ELEVATOR SHAFTS OR CONCEALED SPACES PER NFPA 13R:6.6.6

GENERAL NOTES:

- NEW APARTMENT BUILDING TO BE PROTECTED WITH AN NFPA 13R COMPLIANT FIRE SPRINKLER SYSTEM.
- WET SINGLE ZONE FIRE SPRINKLER SYSTEM TO PROTECT BASEMENT THROUGH FOURTH FLOOR LEVELS.
- PIPE SIZED BY HYDRAULIC CALCULATIONS FOR THE PROTECTION OF RESIDENTIAL OCCUPANCY PER NFPA 13R STANDARDS. BASEMENT STORAGE CALCULATED TO ORDINARY 2 HAZARD OCCUPANCY.
- BASEMENT LEVEL PIPE TO BE SCHEDULE 10 AND 40 BLACK STEEL CONNECTED WITH LISTED GROOVED AND CAST IRON THREADED FITTINGS. PIPE TO BE SUPPORTED TO NFPA 13 STANDARDS. PIPE ON FIRST THROUGH FOURTH FLOOR LEVELS TO BE LISTED CPVC CONNECTED WITH CPVC FITTINGS.
- SPRINKLERS OMITTED FROM SMALL BATHS AND COMBUSTIBLE CONCEALED SPACES AS PERMITTED BY NFPA 13R CHAPTER 6, SECTION 6.8.
- OWNER IS RESPONSIBLE TO TEST AND MAINTAIN SYSTEM TO NFPA 13R REQUIREMENTS.

PROJECT RMS - JEFFREY DENIS - RMS226

Alternative Sprinkler Fire Protection
39 Jackson Road
Poland Springs, ME
(207) 838-8930
MAINE CONTRACTOR LICENSE NUMBER - FSC960



LEGEND

(Symbol)	HYDRAULIC REFERENCE POINTS
(Symbol)	HANGER LOCATION
(Symbol)	PIPE RISE/DROP
(Symbol)	CENTER OF PIPE ABOVE FLOOR (ft.-in.)
(Symbol)	CENTER OF PIPE FROM BOTTOM OF DECK (in.)
(Symbol)	EXISTING PIPE TO REMAIN
(Symbol)	NEW PIPE INSTALLATION
(Symbol)	CEILING HEIGHT

SPRINKLER INFORMATION

TOTAL HEADS THIS SHEET: 87		TOTAL HEADS THIS JOB: 87						
SYM	CNT	POSITION	FINISH	TEMP	K	INPT	MFG.	MODEL#
○	23	UPRIGHT	BRASS	155	8.0	3/4"	RELIABLE	F1FR80 SSU
◁	1	SIDEWALL	WHITE	155	5.6	1/2"	RELIABLE	F1FR HSW
●	63	PENDENT	CONCEALED	155	4.9	1/2"	RELIABLE	RFC49

30 MERRILL STREET
PORTLAND, ME

CONTRACT WITH

NO	DATE	REVISIONS DESCRIPTION

SCALE: 1/8"=1'-0"
DRAWN BY: JGD
DATE: 5/10/2017
JOB NUMBER: SC16021
SHEET NUMBER: F1 of 1