

COPYRIGHT: Reuse or reproduction of the contents of this document is not permitted without written permission of Bild Architecture LLC

WINDOW SCHEDULE				
TYPE	SIZE (ROUGH OPENING)	MATERIAL	OPERATION	NOTES
A	-	-	-	-
B	2'-6" X 3'-0"	-	AWNING OR FIXED	1,2,4,5
C	2'-6" X 5'-0"	-	FIXED	1,2,4
D	5'-0" X 3'-0"	-	CASEMENT OR FIXED	1,3,2,4,5
E	5'-0" X 5'-0"	-	FIXED	1,2,4
F	7'-0" X 1'-4"	-	FIXED	1,2,4
G	7'-0" X 5'-6"	-	SWING	1,2,4
H	7'-0" X 3'-0"	-	FIXED	1,2,4

WINDOW SCHEDULE NOTES:

- SAFETY GLAZING DENOTED BY (T) SHOWN ON BLDG. ELEVATIONS
- ALL WINDOWS TO HAVE A MAXIMUM U-FACTOR OF 0.35
- WINDOWS LABELED 'EGRESS WINDOW' IN PLAN MUST COMPLY WITH: MIN AREA: 5.7SF
MIN HEIGHT: 24"
MIN WIDTH: 20"
- WINDOWS TP BE THERMALLY BROKEN
- SEE ELEVATIONS FOR OPERATION

WINDOW SPECIFICATIONS:

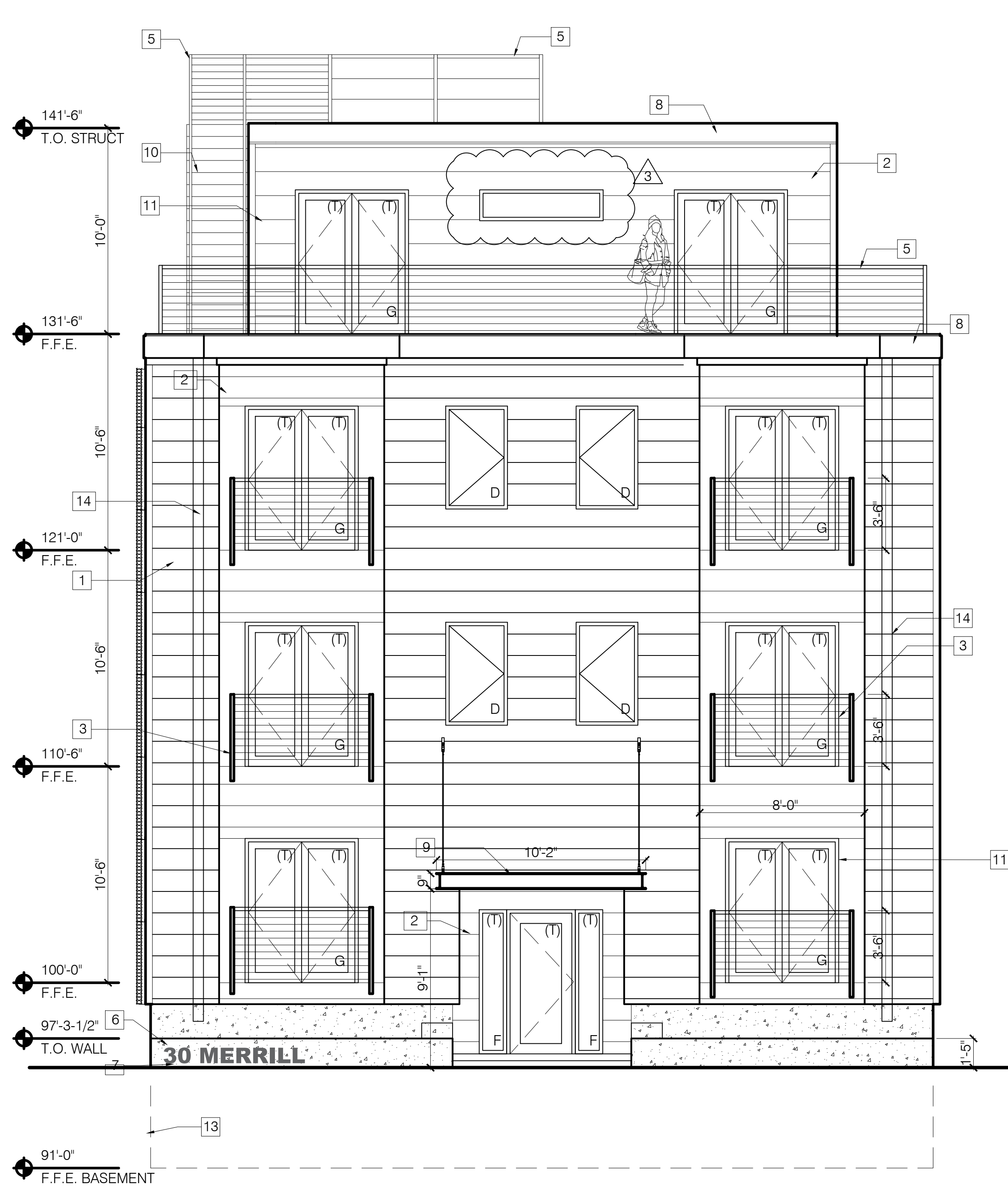
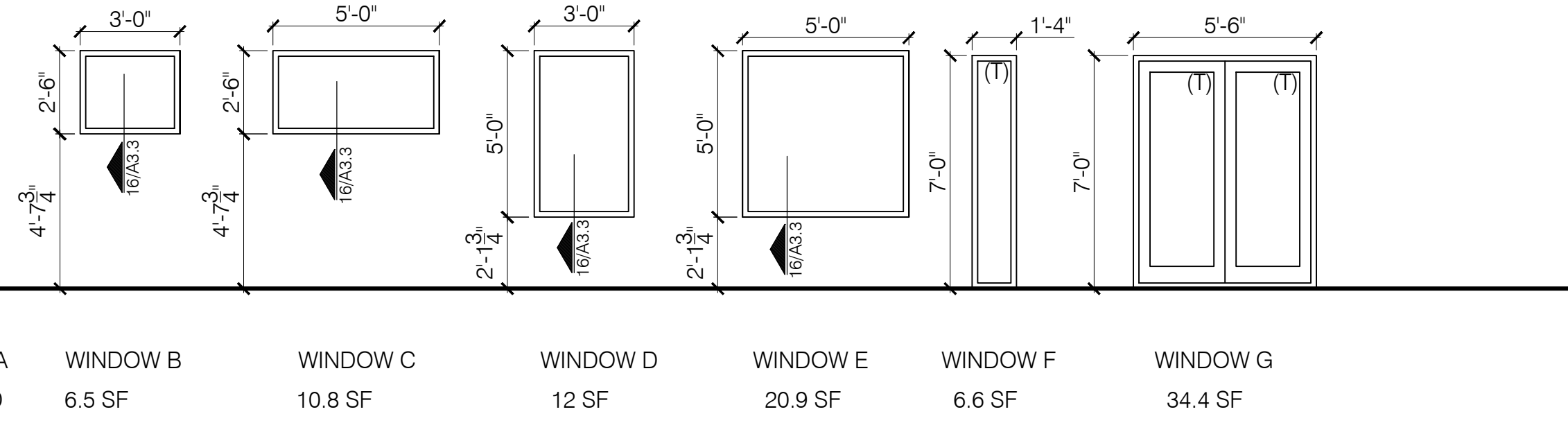
- Size and window configuration. See Window Schedule
- Color options. To be selected Preferred
- Factory Mulling Capability. Preferred
- Design Pressure Rating. 25
- U Factor. 0.35 or lower
- Material. To be selected
- Glazing Type. To be selected
- Hardware type. To be selected
- Exterior Washing Capability. Washing from interior preferred
- Warranty (Window & glazing units). 10 years
- Insect Screens. Standard Insect Screens

GENERAL NOTES:

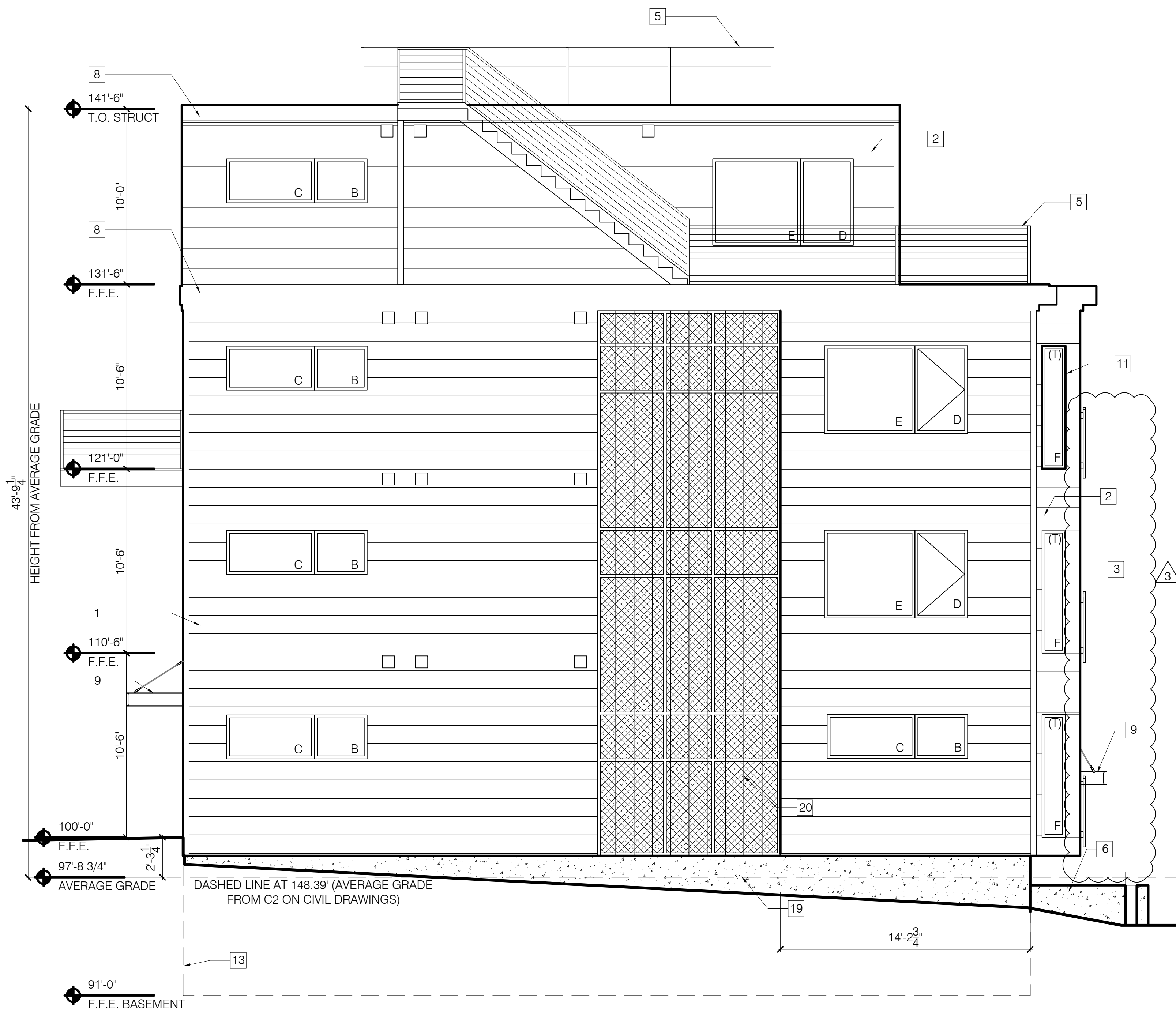
- GLAZING IN ALL DOORS IS REQUIRED TO BE SAFETY GLAZING
- FINAL FINISHES TO BE SELECTED BY OWNER.
-
-

KEYNOTES:

- LP SMART SIDING - SMOOTH FINISH - CLAPBOARD - 11.84 WIDTH - COLOR 1
- LP SMART SIDING - SMOOTH FINISH - CLAPBOARD - 11.84 WIDTH - COLOR 2
- FABRICATED METAL RAILING
-
-
- CONCRETE PLANTER
- BUILDING ADDRESS FORMED INTO CONCRETE
- GALVANIZED FINISHED BREAK METAL COPING
- FABRICATED METAL AWNING WITH METAL ROD SUPPORTS
- EXTERIOR STAIR
- BREAK METAL WINDOW TRIM DETAIL
- LINE OF ROOF BEYOND
- LINE REPRESENTS BASEMENT BELOW GRADE
- SCUPPER AND DOWNSPOUT -SEE DETAIL 10/A3.2
- DRYER VENT
- HVAC EXHAUST
- HVAC INTAKE
- LOCATION FOR INSTALLATION OF HEAT PUMP UNITS
- GREEN SCREEN WALL MOUNTED MODULAR PANEL
- VERTICAL SIDING BEHIND SCREEN



1 FRONT (EAST) ELEVATION
SCALE: 1/4" = 1'-0"



2 SOUTH ELEVATION
SCALE: 1/4" = 1'-0"

Bild Architecture
PO Box 8235
Portland, ME
04104
207.408.0168
evan@bildarchitecture.com



PROJECT NO. **15018**
PROJECT NAME **30 MERRILL STREET PORTLAND, ME**

REVISIONS

1	03.13.2017	
2	06.29.2017	
3	07.13.2017	
4		
5		

REVISED SET

DRAWN BY **EMW**
SHEET TITLE

ISSUE DATE **3/13/17**
SHEET SCALE **1/4" = 1'-0"**

ELEVATIONS