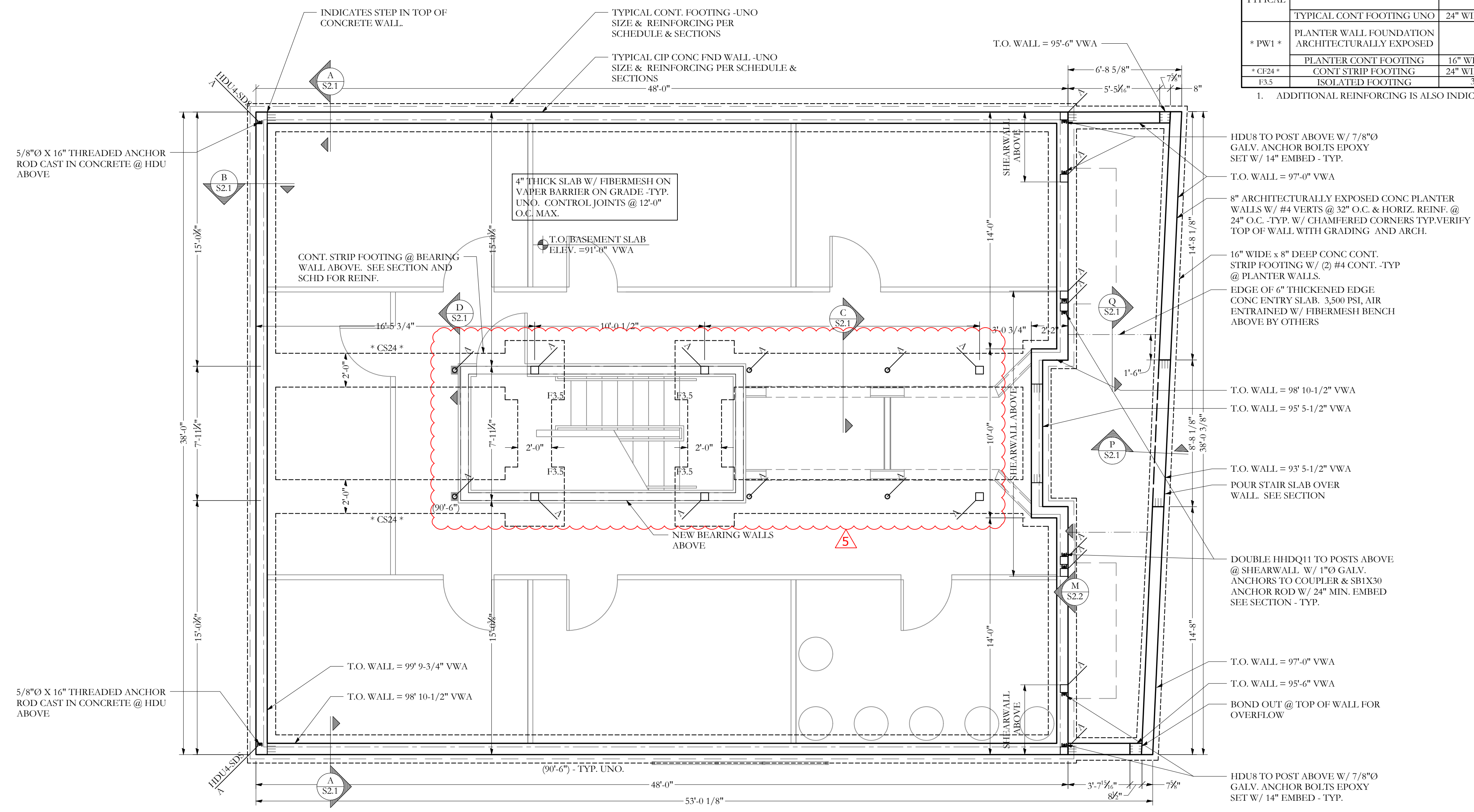


CONCRETE SIZE & REINFORCEMENT SCHEDULE			
MARK	TYPE	SIZE	REINFORCING
TYPICAL	TYPICAL FND WALL UNO	8" WIDE x CONT.	(2) #5 CONT. TOP AND BOT -TYP #4 HORIZ @ 18"   #4 VERT @ 16" -SEE SECTION A/S2.1
	TYPICAL CONT FOOTING UNO	24" WIDE x 10" THICK x CONT.	(5) #4 CONT.
* PW1 *	PLANTER WALL FOUNDATION ARCHITECTURALLY EXPOSED	8" WIDE x CONT.	(2) #5 CONT. TOP AND BOT -TYP #4 HORIZ @ 24"   #4 VERT @ 32" -HOOK DOWELS @ 64" O.C.
	PLANTER CONT FOOTING	16" WIDE x 8" THICK x CONT.	(2) #4 CONT.
* CS24 *	CONT STRIP FOOTING	24" WIDE x 10" THICK x CONT.	(3) #4 CONT.
153	ISOLATED FOOTING	36" SQ x 10" THICK	#4 @ 12" O.C. E.W. @ MID DEPTH

1. ADDITIONAL REINFORCING IS ALSO INDICATED IN PLANS AND SECTION



**FOUNDATION/GROUND FLOOR PLAN**  
 NOTES:  
 1. ALL CONCRETE REINFORCING STEEL PER PLANS, SCHEDULE AND SECTIONS.  
 2. SEE S-1.0 FOR STRUCTURAL GENERAL NOTES  
 3. STEP IN TOP OF FOUNDATION WALL IS INDICATED THUS: [Symbol], AND SHOWS LOWER SIDE OF WALL.  
 4. FOOTING TO BEAR 4'-0" MIN BELOW GRADE.  
 5. T.O. FOOTINGS ARE INDICATED THUS: (XX'-XX").  
 6. REFERENCE ELEV. 100'-0" = T.O. FIRST FLOOR SHEATHING. COORDINATE ACTUAL USGS ELEVATIONS W/ SITE & CIVIL.  
 7. STEP IN TOP OF FOOTING IS INDICATED THUS: [Symbol], AND SHOWS LOWER FOOTING.  
 8. T.S. = TOP OF SLAB OR TOP OF STEEL  
 9. T.W. = TOP OF WALL

PROJECT NO. **16-0080**  
 PROJECT NAME **Merrill Street - 7 unit**  
 PORTLAND, ME

REVISIONS	DATE	DESCRIPTION
1	11/11/16	
2	12/15/16	
3	12/20/16	
4	03/09/17	
5	04/05/17	

**PERMIT SET**

DRAWN BY **MKL**  
 SHEET TITLE **FOUNDATION PLAN**

ISSUE DATE **8/23/16**  
 SHEET SCALE **AS NOTED**