

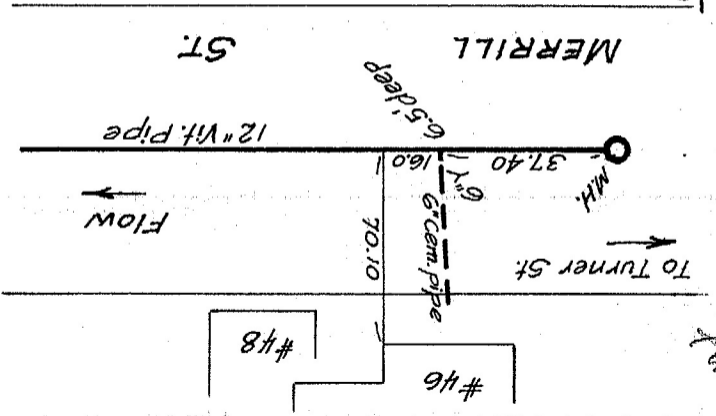
Date of Entrance JULY 21, 1938

Connected by SEWER DEPT.

Size and kind of pipe 6" Cem. Pipe

Inspected by F. W. BRYANT

S.C.B. 11/159



MERRILL ST.

ST.

To Quebec St.

FLOW

#48

#46

TO TURNER ST.

6.5' deep

6" Cem. Pipe

12" Vit. Pipe

M.H.

37.40

16.0

70.10