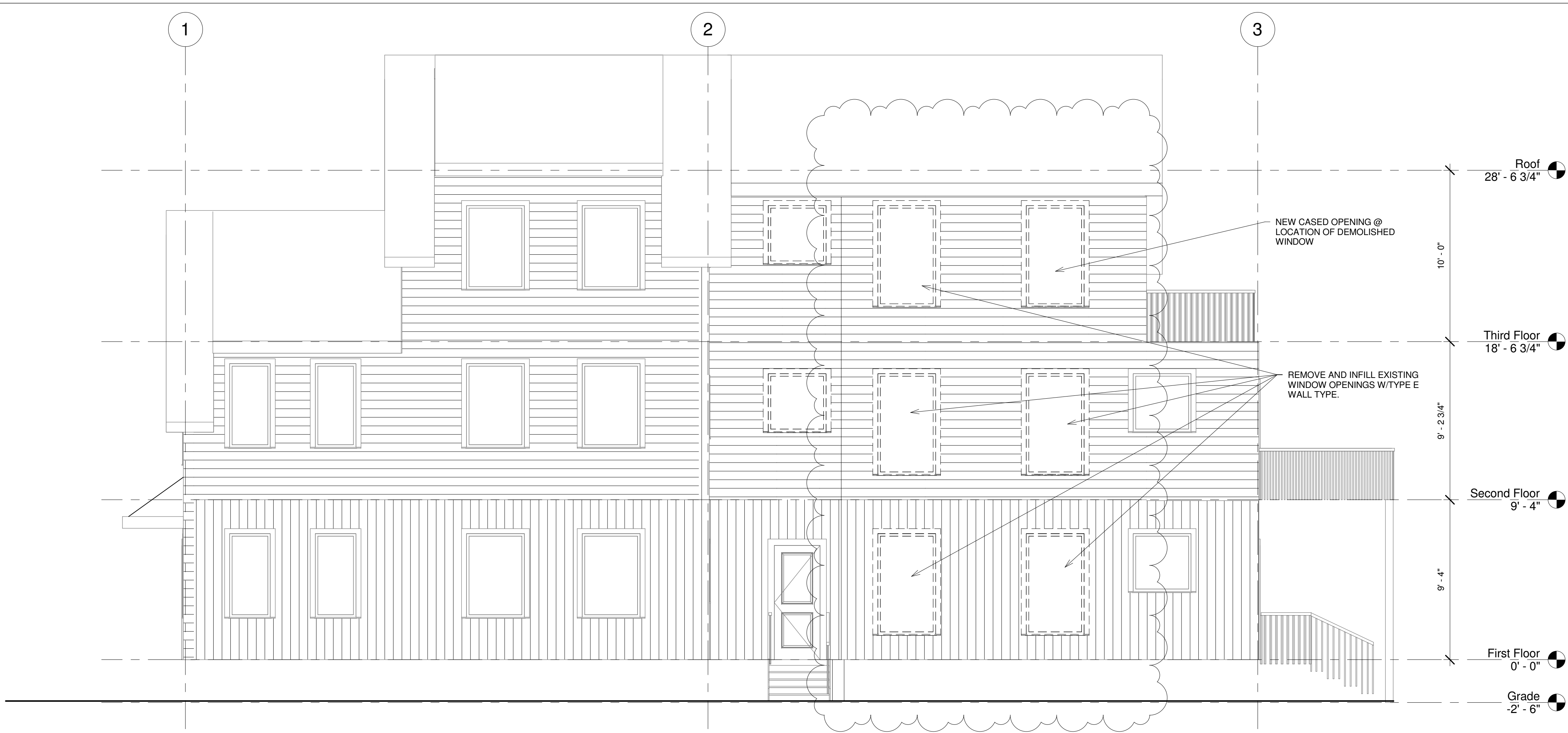


**LAFAYETTE THREE-FAMILY  
LEGALIZING NON-CONFORMING UNIT**  
47 LAFAYETTE STREET  
JOSHUA WOJCIK



**DEXTROUS  
CREATIVE**

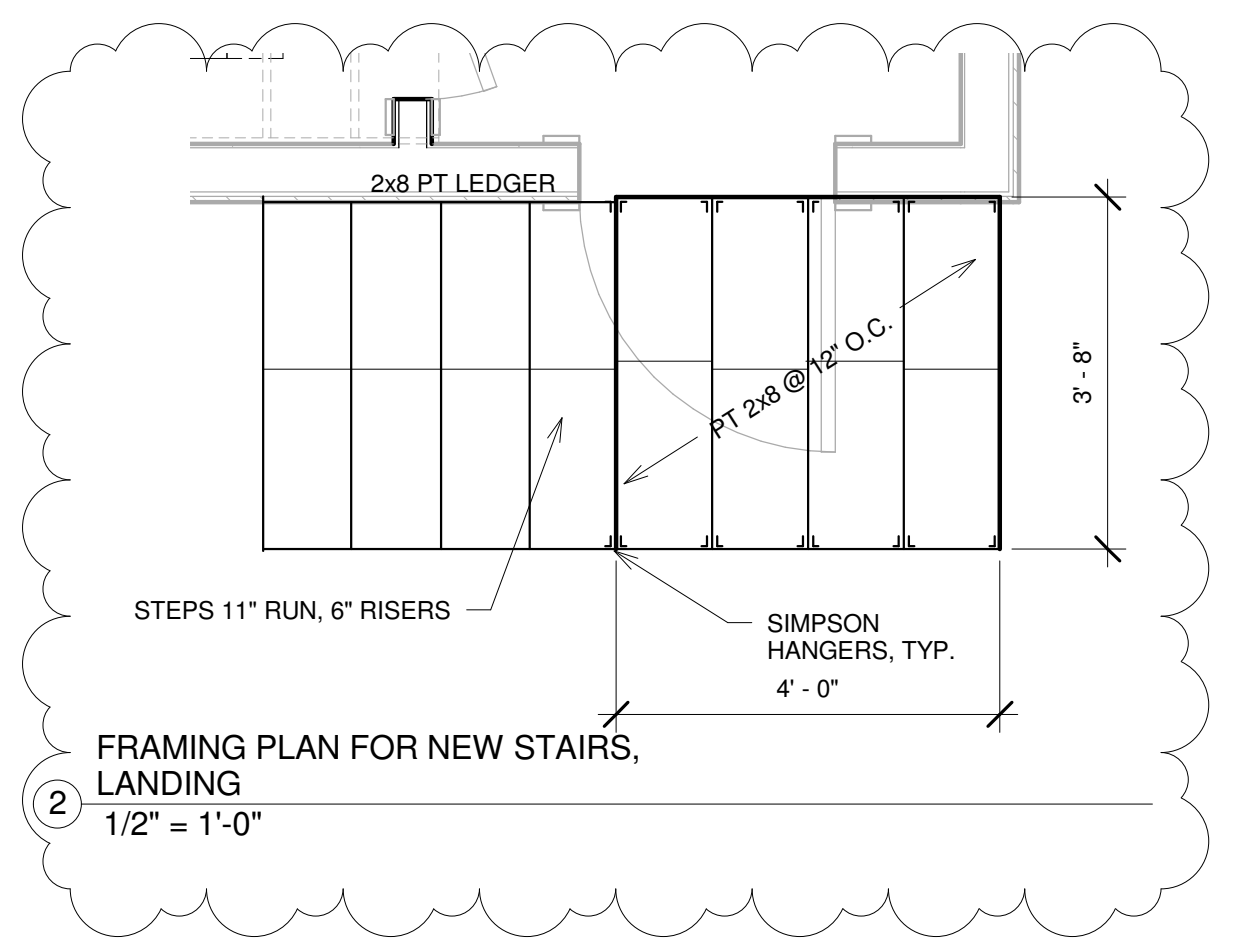
PORTLAND, ME 04102  
TRACIE REED, ARCHITECT  
NCARB, AIA, LEED AP BD+C  
traciereed@dextrouscreative.com  
207.409.0459 (cell)



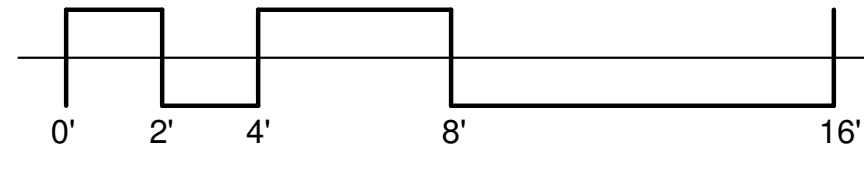
③ South Existing Condition  
1/4" = 1'-0"



① South  
1/4" = 1'-0"



② FRAMING PLAN FOR NEW STAIRS,  
LANDING  
1/2" = 1'-0"



No.	Description	Date
1	Revision 1	Date 1

**SOUTH  
ELEVATIONS**

Project number 16-22  
Date 03.07.17  
Drawn by TJR  
Checked by TJR

**A-2.1**

Scale As indicated