

LAFAYETTE THREE-FAMILY
LEGALIZING NON-CONFORMING UNIT
 47 LAFAYETTE STREET
 JOSHUA WOJCIK



**DEXTROUS
 CREATIVE**

PORTLAND, ME 04102
 TRACIE REED, ARCHITECT
 NCARB, AIA, LEED AP BD+C
 traciereed@dextrouscreative.com
 207.409.0459 (cell)

No.	Description	Date
1	Revision 1	Date 1

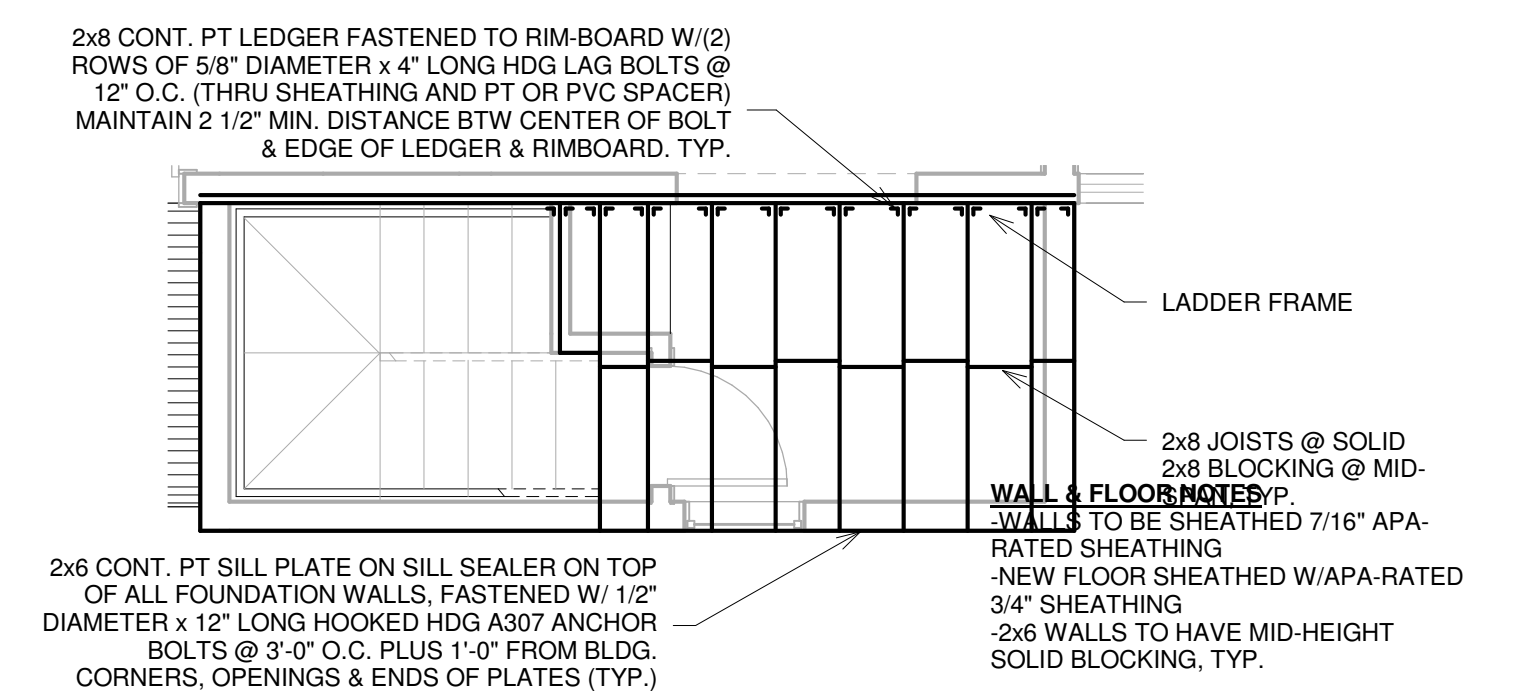
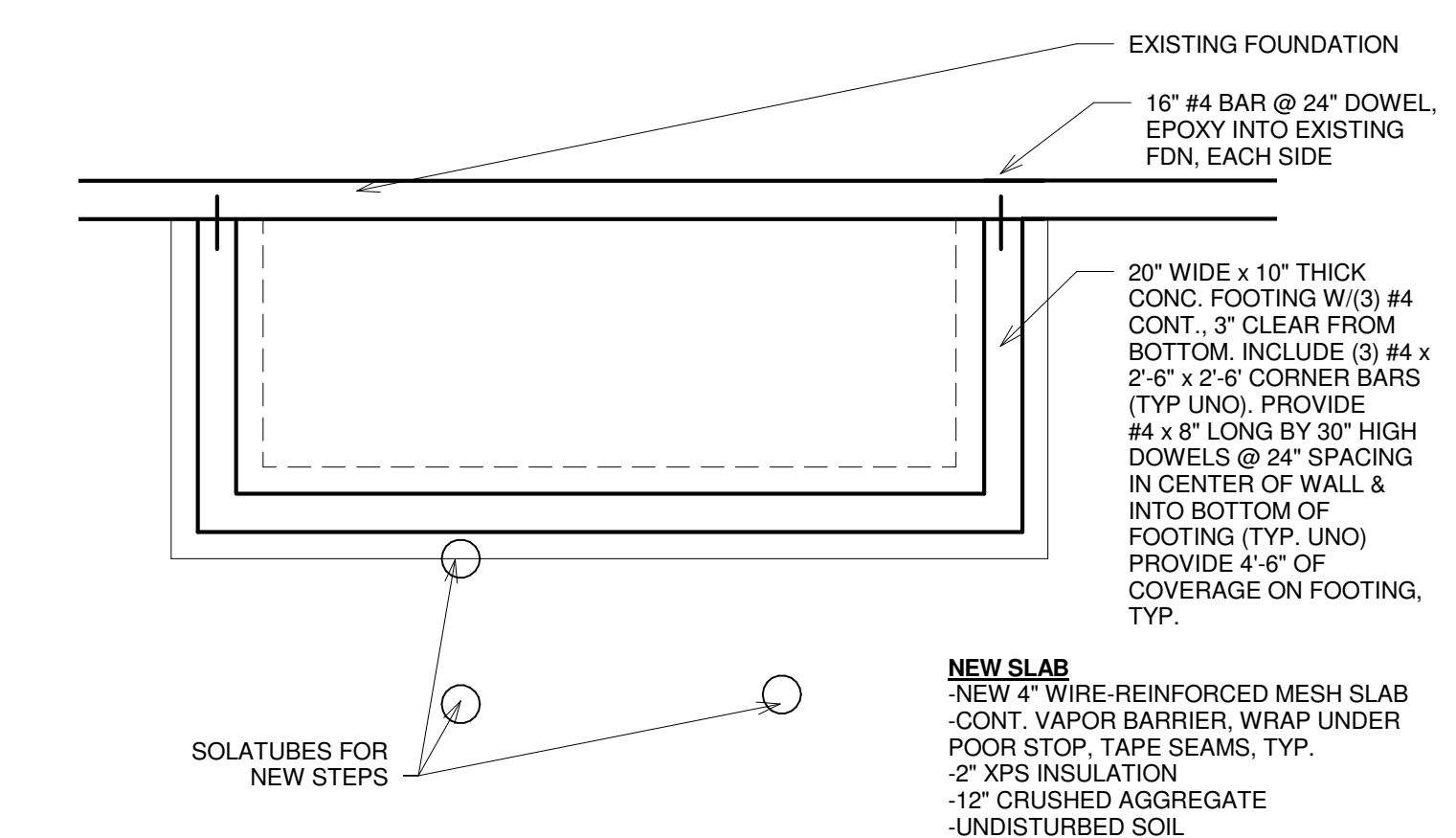
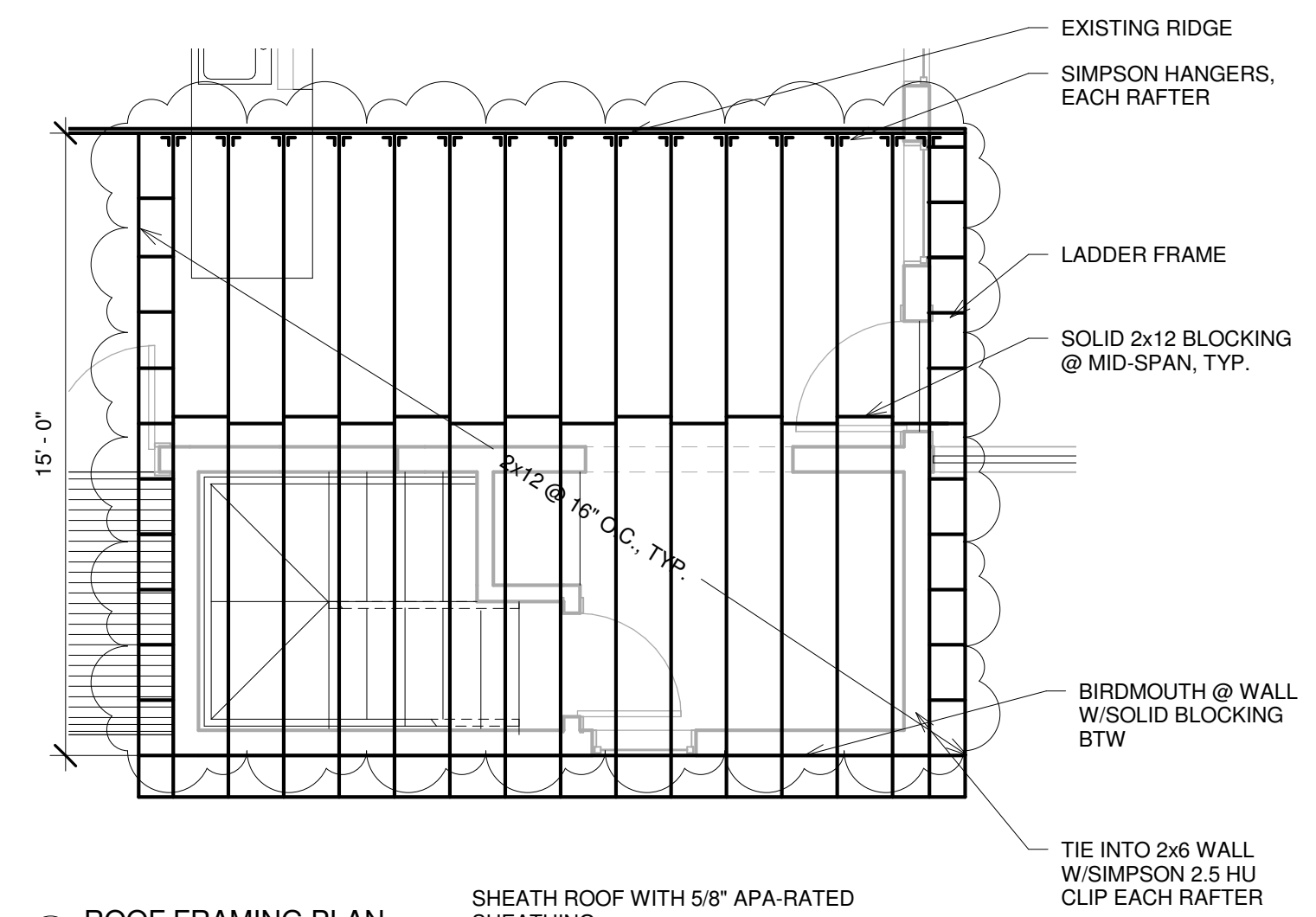
**EAST/WEST/NORTH
 ELEVATIONS**

Project number 16-22
 Date 02.01.17
 Drawn by TJR
 Checked by TJR

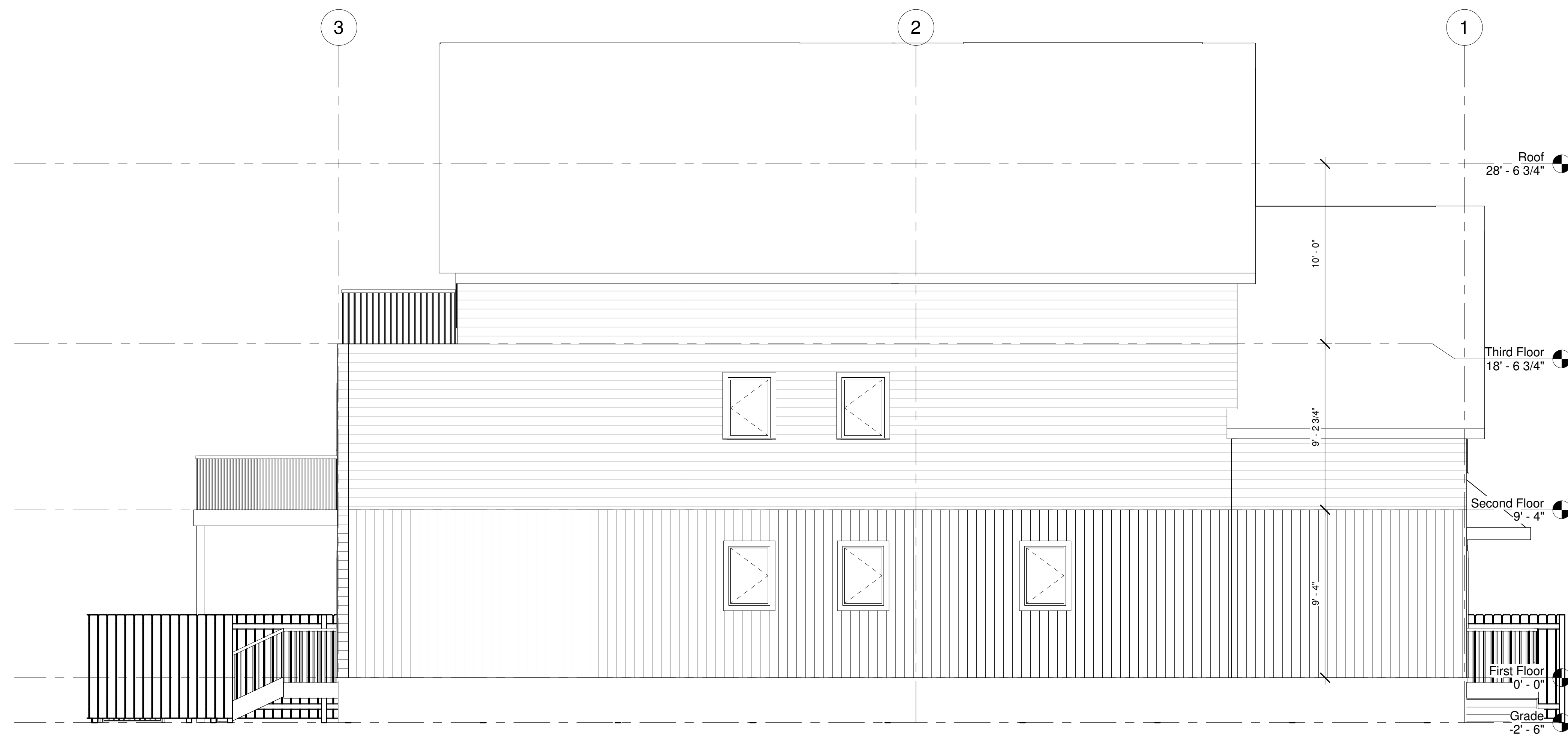
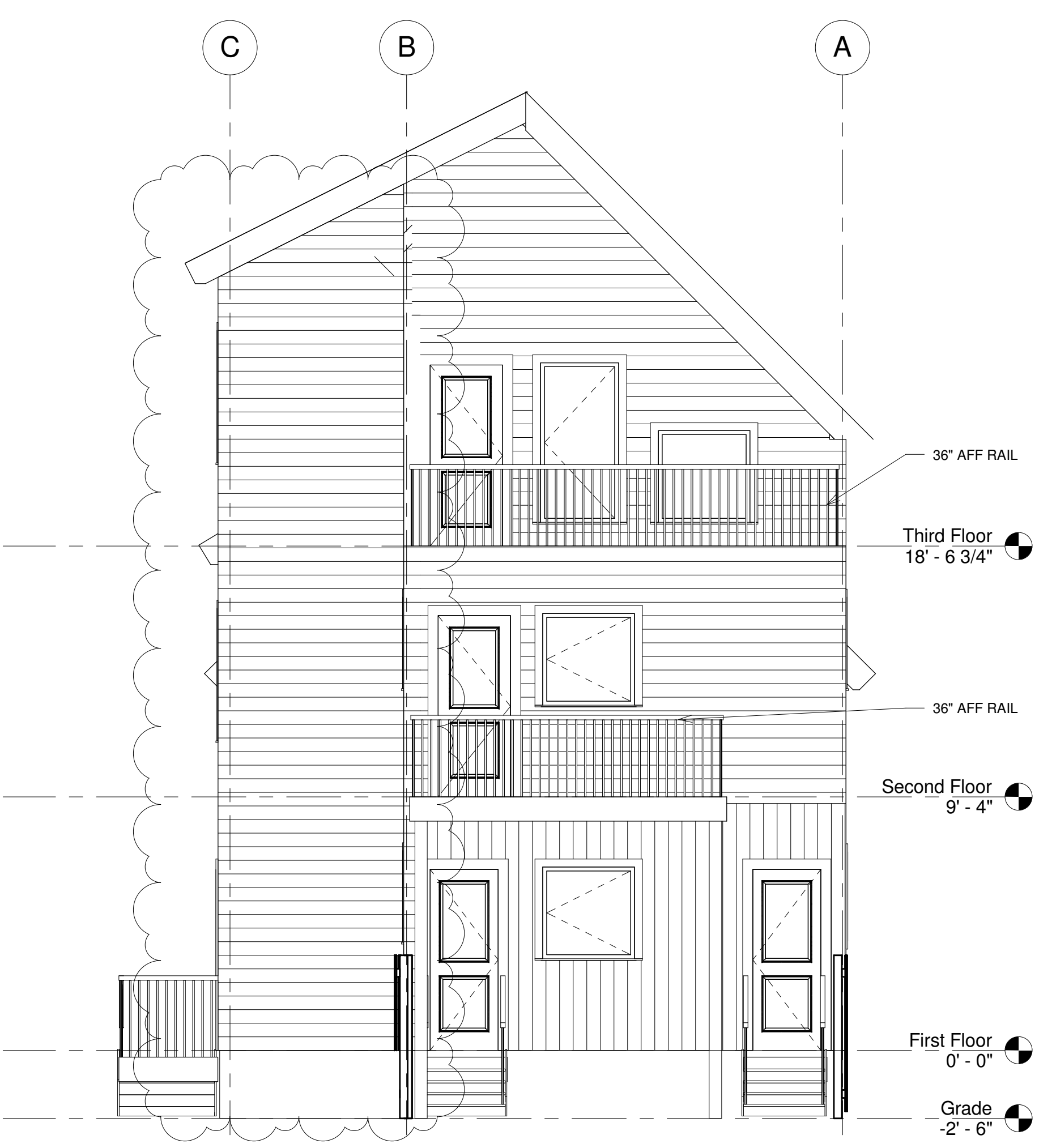
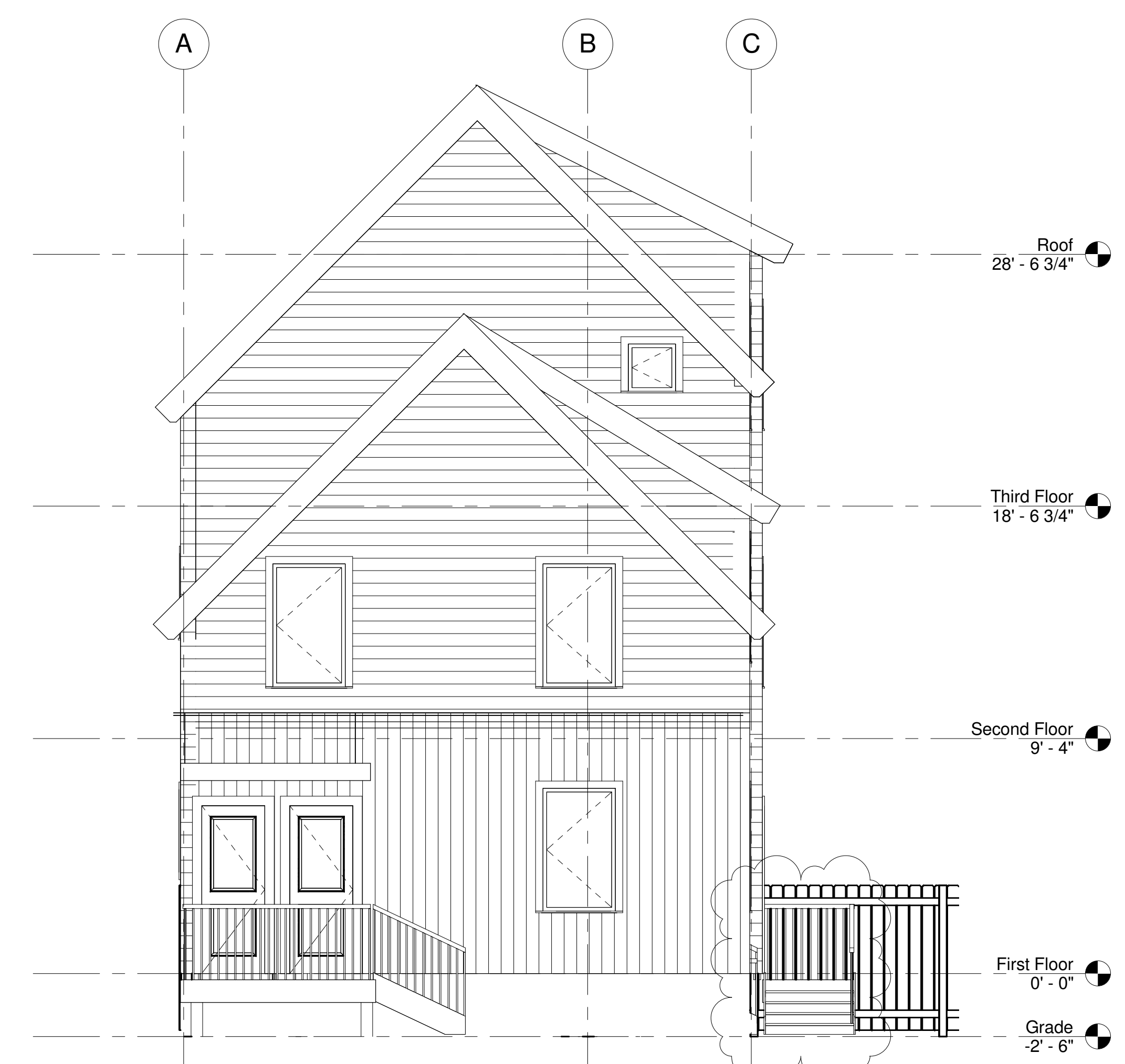
A-2.2

Scale 1/4" = 1'-0"

2/1/2017 5:41:35 PM



6 Typical Framing Plan
 1/4" = 1'-0"



3 North
 NO CHANGES TO FACADE
 1/4" = 1'-0"