



1 NORTH STREET
TENANT FITOUT (LEVEL III ALTERATION)

OWNERS (Tenants)
Chris Deutsch & Amy Fuller
219 Wilson Street #2
Portland, ME 04101
(703) 395-9361 (cell)
bellevilmaine@gmail.com



**DEXTRIOUS
CREATIVE**

PORTLAND, ME 04102
TRACIE REED, ARCHITECT
1248B, W. A. LEE ST #204C
traciereed@dextrouscreative.com
207.493.0459 (cell)

PROJECT TEAM

No.	Description	Date

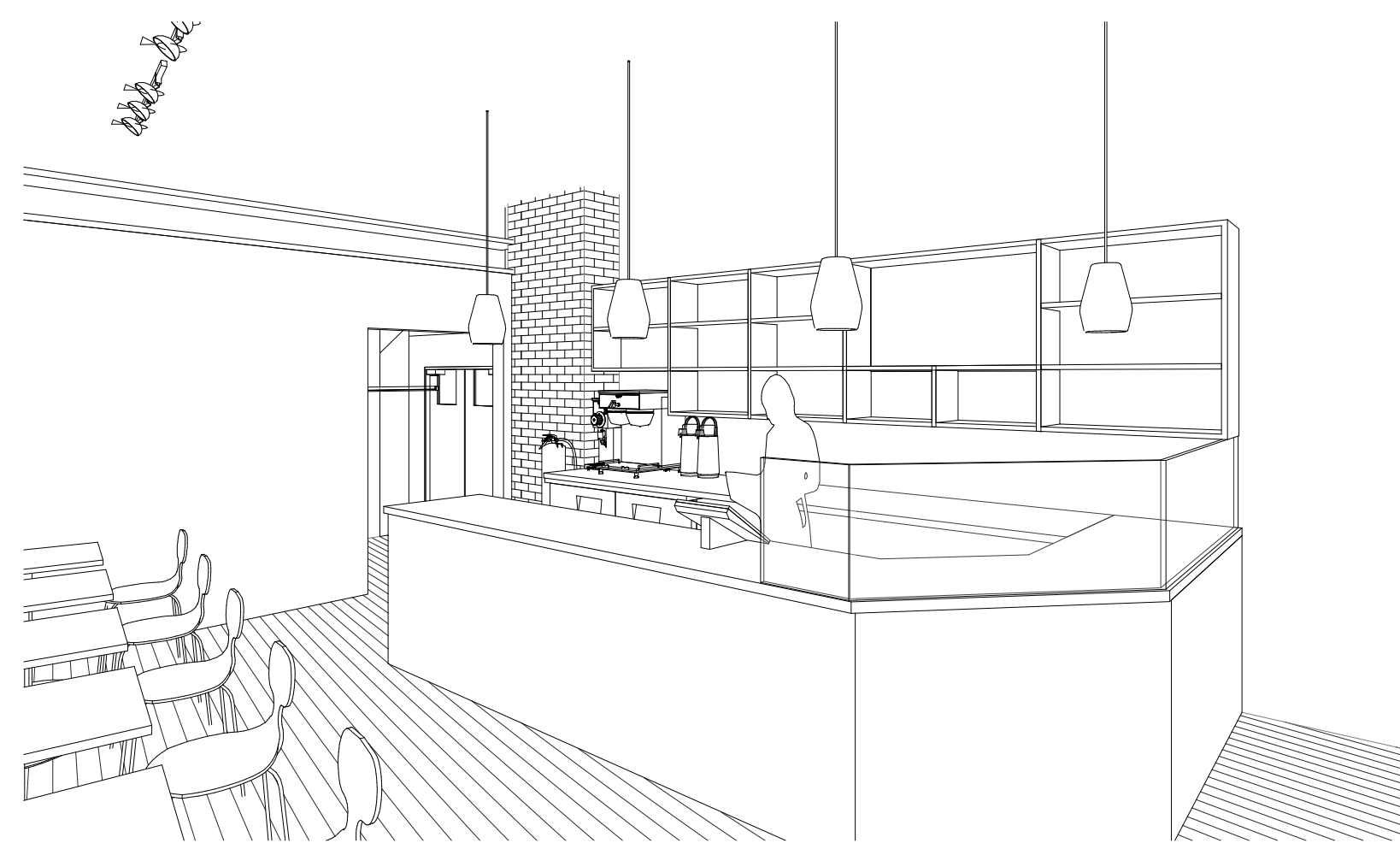
FIRST FLOOR PLAN

Project number	17-04
Date	04.06.17
Drawn by	TJR
Checked by	TJR

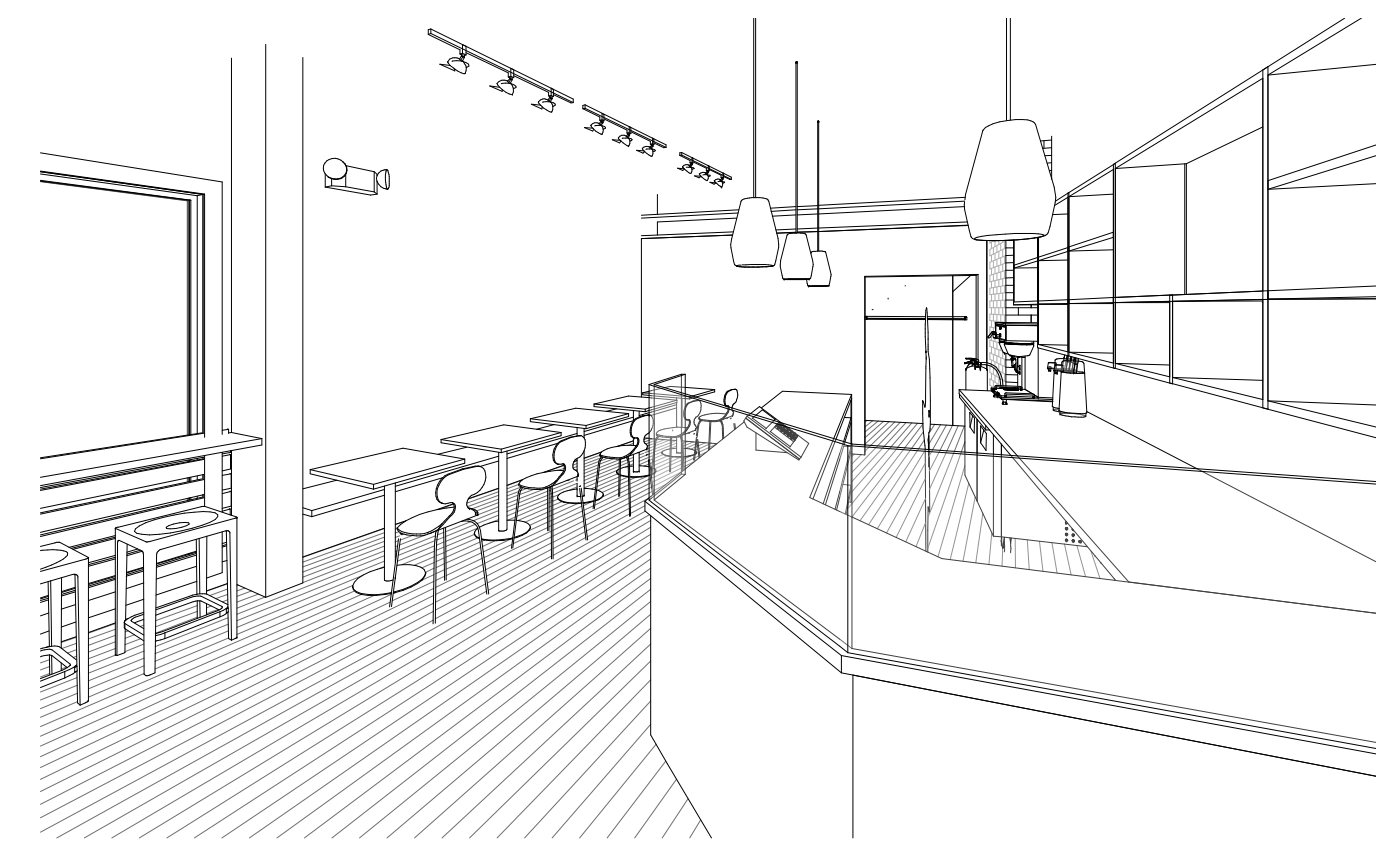
A-1.1

Scale 1/4" = 1'-0"

4/6/2017 6:25:57 AM



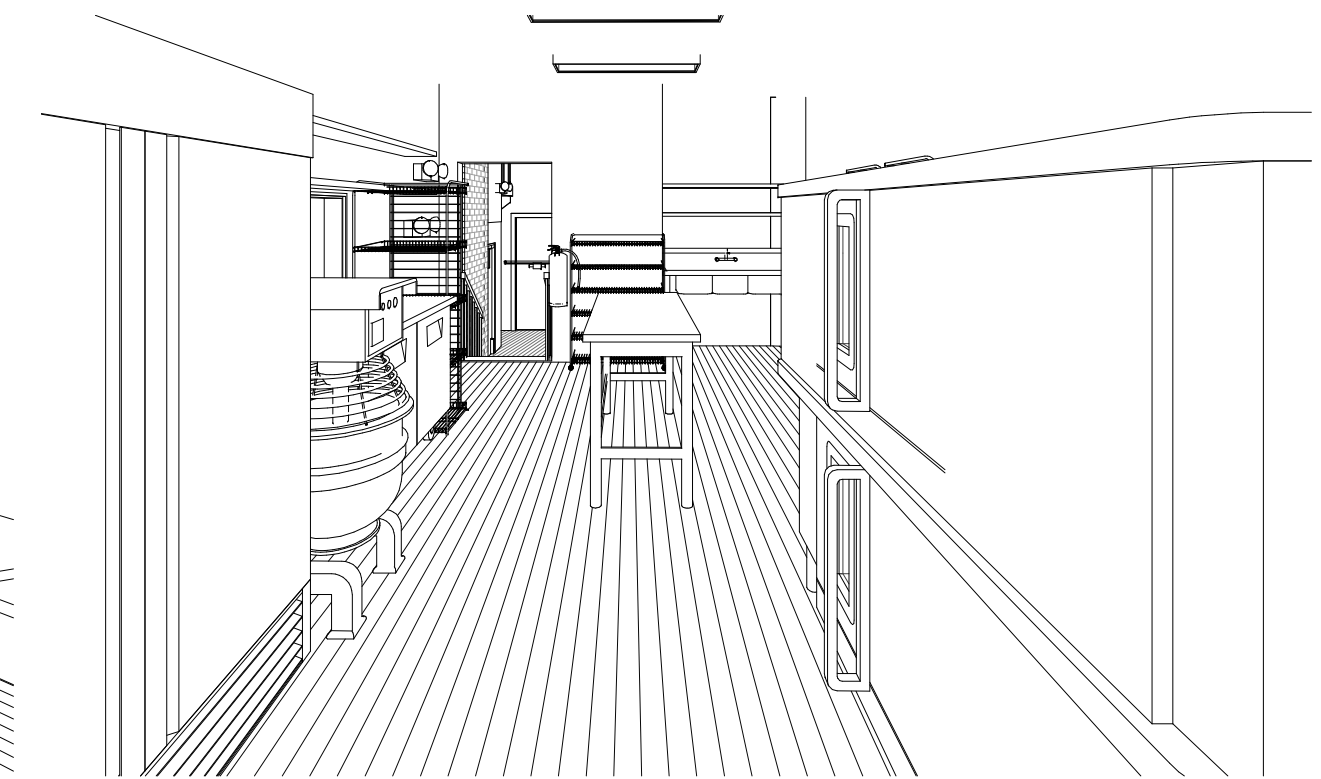
F View from Door



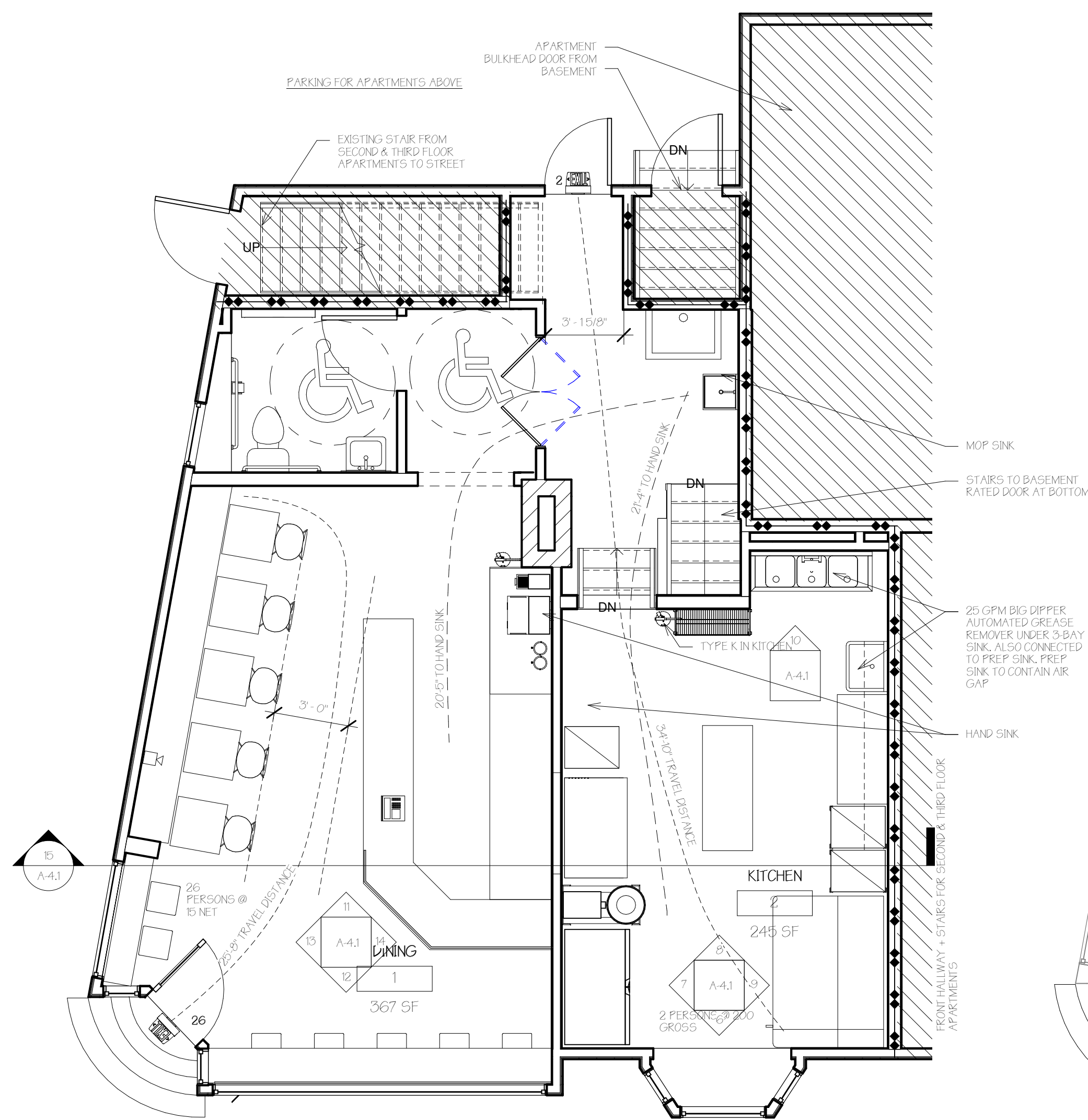
G View from Front Corner



H View from Back Casework Opening



J Kitchen From Bay Window



K Life Safety Plan
1/4" = 1'-0"

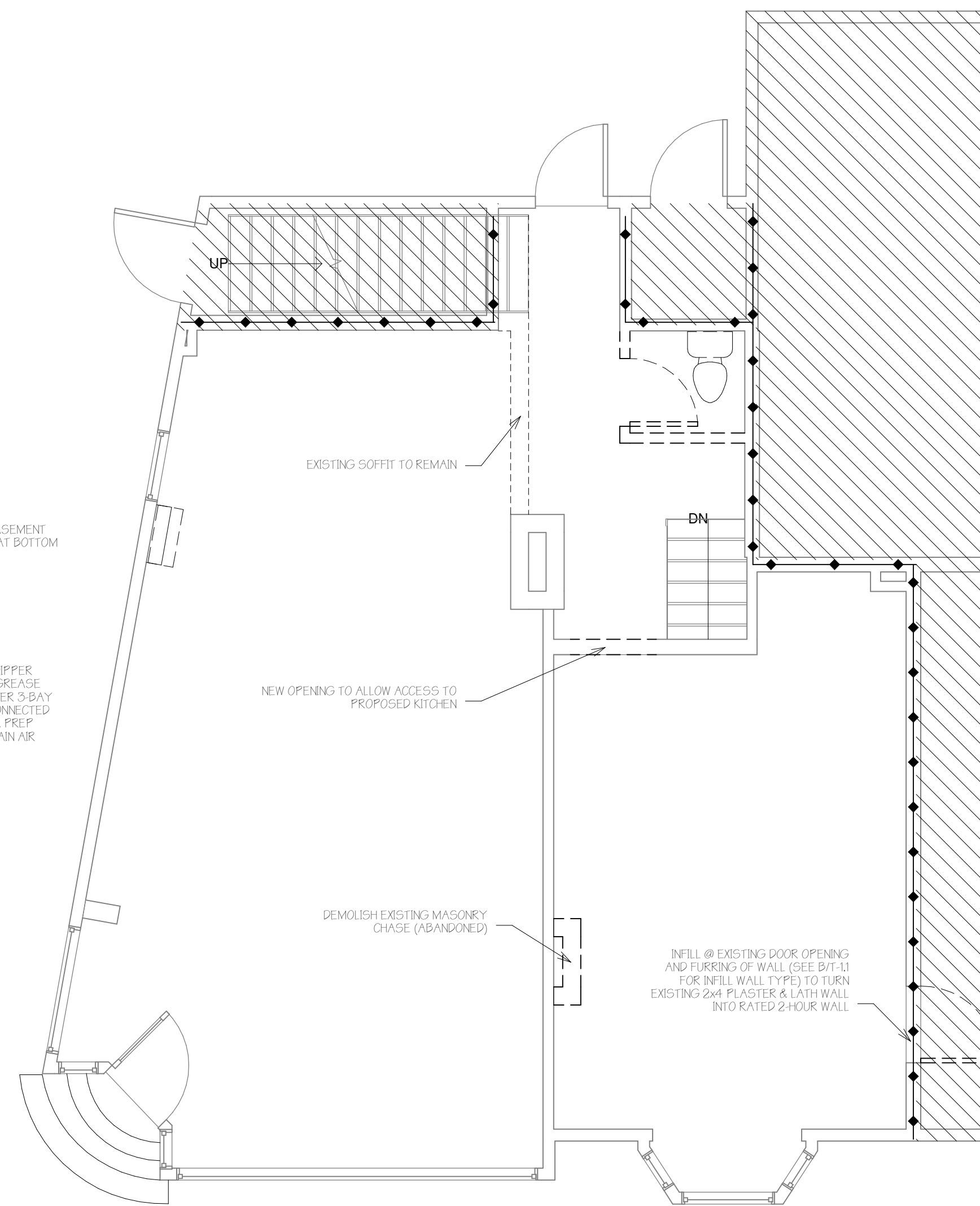
- FIRE EXTINGUISHER (TYPE K IN KITCHEN, ABC ELSEWHERE, TYP.)
- EXIT SIGN
- EMERGENCY LIGHT
- HORN STROBE

Life Safety Legend
1/4" = 1'-0"

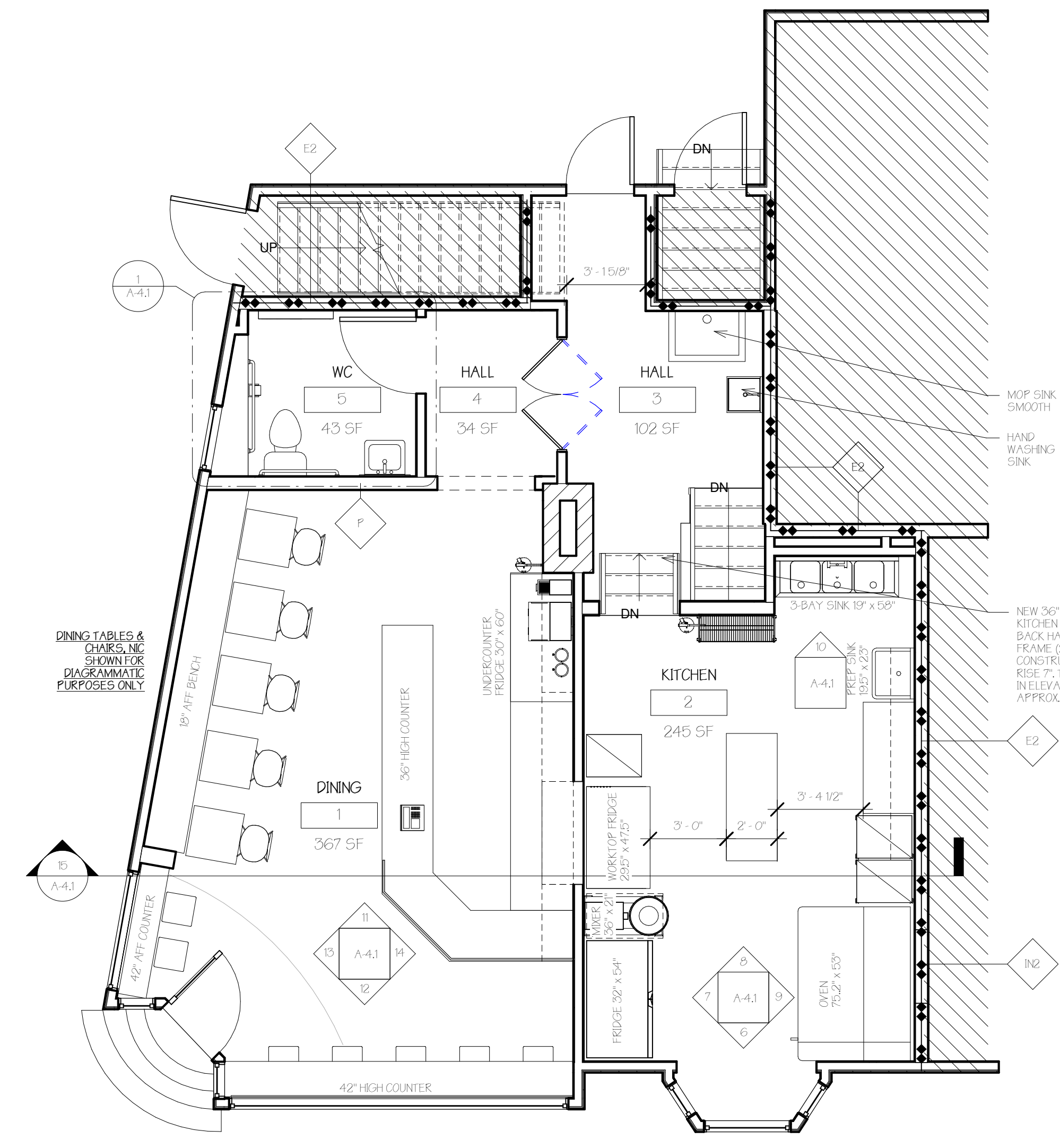
OCCUPANT LOAD PER IBC 1004.11

- CONCENTRATED TABLES AND CHAIRS: 10 NET
- STANDING SPACE: 5 NET
- COMMERCIAL KITCHEN: 200 GROSS
- MECH: 60 GROSS
- MECH. STORAGE OR ACCESSORY STORAGE: 300 GROSS

1004.11 AREAS WITHOUT FIXED SEATING, WHERE APPROVED BY THE AHJ THE ACTUAL NUMBER OF OCCUPANTS FOR WHOM EACH OCCUPIED SPACE IS DESIGNED, ALTHOUGH LESS THAN THOSE DETERMINED BY CALCULATION SHALL BE PERMITTED TO BE USED IN THE DETERMINATION OF THE DESIGN OCCUPANT LOAD.



L First Floor Existing
1/4" = 1'-0"



M First Floor
1/4" = 1'-0"

