

RINNAI CONDENSING WALL-MOUNTED GAS BOILER SPECIFICATIONS AND ACCESSORIES



RS100

RS100 Controller

- Simple digital controller with backlit display
- Direct communication with boiler
- Adaptive indoor reset control
- Error reporting and auto service message
- Local override of the room temperature
- Features three factory preset programs; programmable for holidays
- Customized program/profile can be created by user or installer to fit individual needs

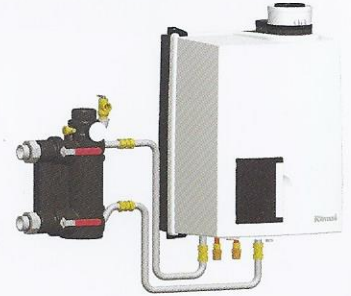
In The Box- Included with each boiler:

- 3" twin pipe adapters for venting
- Wall mounting bracket
- Plumbing kit – includes pre-assembled low loss header with isolation valves, PRV, boiler drain, temperature and pressure gauge, unions and insulation
- Outdoor reset sensor
- 3/4" gas shut-off valve
- Flow restrictor (combi units only)



Condensate Neutralizer Kit

- Raises pH before discharge into drain
- 1.6 gallons/hour (6.05 liters/hour)
- Mounts vertically or horizontally
- Fast, simple installation
- Clear capsule
- Refillable
- Parts included



Side-Mount Accessory Kit

- Solution for applications with height limitations
- Allows installer to connect system components at an optimal height
- Saves on time and labor
- Mounts to left side of boiler only

Rinnai Condensing Wall-Mounted Gas Boilers – "C" Combi and "S" System

Models	E Series		Q Series				
	E75C	E110C	Q85S	Q130S	Q175S	Q175C	Q205S
Dimensions	W - 19.7" (500mm) H - 25.6" (650mm) D - 15.6" (395mm)	W - 19.7" (500mm) H - 34.3" (870mm)* D - 15.6" (395mm)	W - 19.7" (500mm) H - 26.8" (680mm) D - 15.2" (385mm)	W - 19.7" (500mm) H - 26.8" (680mm) D - 15.2" (385mm)	W - 26" (660mm) H - 26.8" (680mm) D - 15.2" (385mm)	W - 39.4" (1000mm) H - 26.8" (680mm) D - 15.2" (385mm)	W - 26" (660mm) H - 26.8" (680mm) D - 15.2" (385mm)
Weight	91 lbs (39kg)	101 lbs (40kg)	110 lbs (50 kg)	117 lbs (53 kg)	141 lbs (64 kg)	196 lbs (89 kg)	141 lbs (64 kg)
Max. Heating Capacity (BTU)	69,000 (20kW)	101,000 (30kW)	78,000 (23kW)	119,000 (35kW)	161,000 (47kW)	161,000 (47kW)	189,000 (55kW)
Min. Input (BTU)	17,000-NG / 37,000-LP (5kW-NG / 11kW-LP)	26,000-NG / 59,000-LP (8kW-NG / 17kW-LP)	17,000-NG / 37,000-LP (5kW-NG / 11kW-LP)	26,000-NG / 59,000-LP (8kW-NG / 17kW-LP)	35,000-NG / 74,000-LP (10kW-NG / 22kW-LP)	35,000-NG / 74,000-LP (10kW-NG / 22kW-LP)	41,000-NG / 74,000-LP (12kW-NG / 22kW)
Max. Input (BTU)	85,000 (25kW)	130,000 (38kW)	85,000 (25kW)	130,000 (38kW)	175,000 (51kW)	175,000 (51kW)	205,000 (60kW)
Max. Input (BTU-Heating)	75,000 (22kW)	110,000 (32kW)	85,000 (25kW)	130,000 (38kW)	175,000 (51kW)	175,000 (51kW)	205,000 (60kW)
Turn Down Ratio	5:1	5:1	5:1	5:1	5:1	5:1	5:1
DHW Activation Rate (GPM)	0.39 Gallon / Minute	0.39 Gallon / Minute				0 Gallon / Minute	
DHW Activation Rate (LPM)	1.77 Liter / Minute	1.77 Liter / Minute				0 Liter / Minute	
Max. DHW @ 75° F ΔT	2.1 Gallon / Minute	3.2 Gallon / Minute				4.1 Gallon / Minute	Indirect Tank Compatible
Max. DHW @ 23.9° C ΔT	7.9 Liter / Minute	12.1 Liter / Minute				15.5 Liter / Minute	
AFUE	96.50%	96.10%	96.50%	96.10%	95.70%	95.70%	95.70%
Circulating Pump	Single Speed			Modulating			

**Height includes expansion tank

Warranty: 12 year heat exchanger, 2 year parts, 1 year labor.

Rinnai is continually updating and improving products; therefore, specifications are subject to change without prior notice. Local, state, provincial and federal codes must be adhered to prior to and upon installation.

FOR MORE INFORMATION ON RINNAI PRODUCTS

ADDITIONAL RINNAI LITERATURE AVAILABLE

RESIDENTIAL TANKLESS WATER HEATERS



HYDRONIC FURNACES



DIRECT VENT WALL FURNACES



Rinnai America Corporation

103 International Drive
Peachtree City, GA 30269

Toll Free 1-800-621-9419

Phone: 678-829-1700 • Fax: 678-364-8643

Visit our Website: www.rinnai.us

E-mail: marketing@rinnai.us

Rinnai

