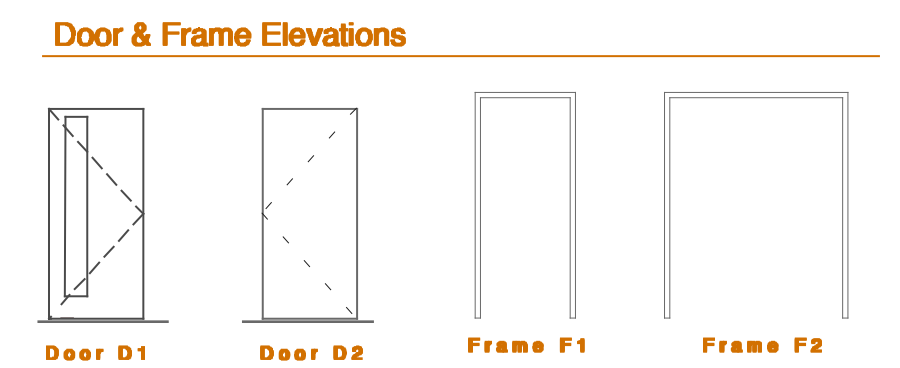
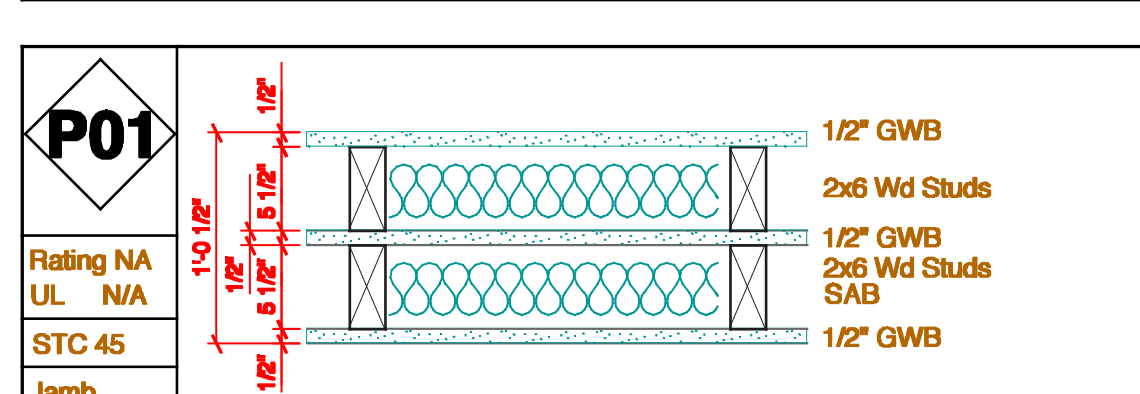
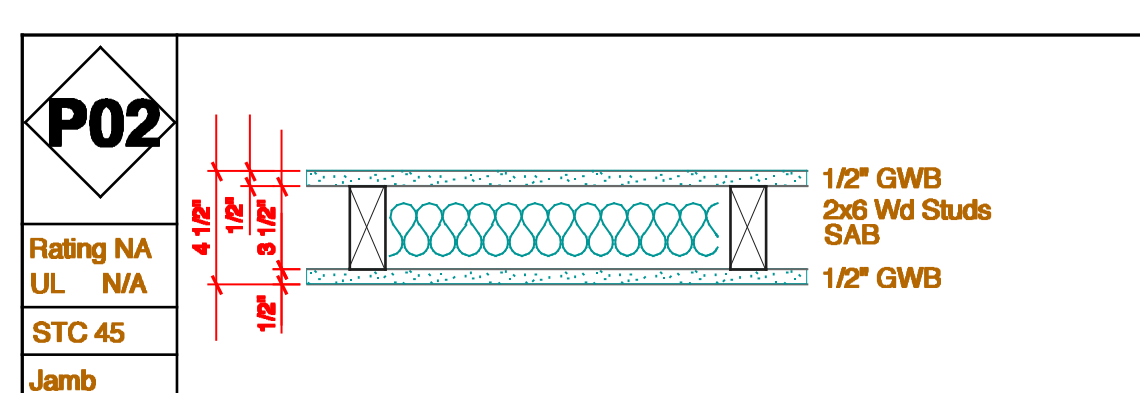
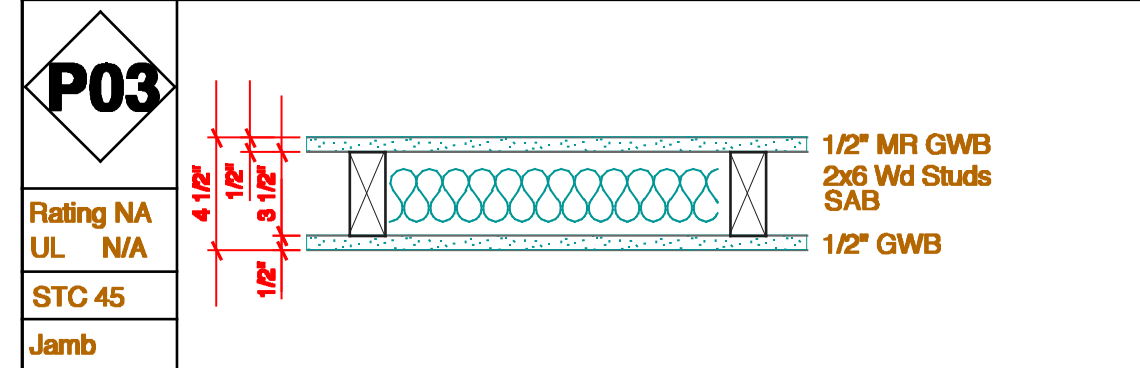
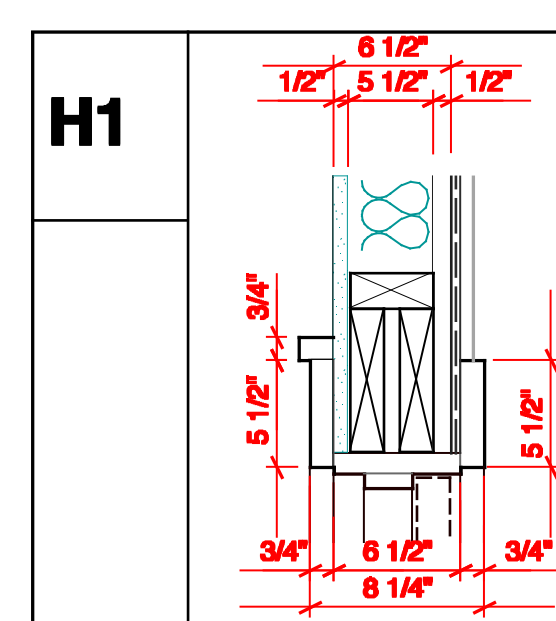
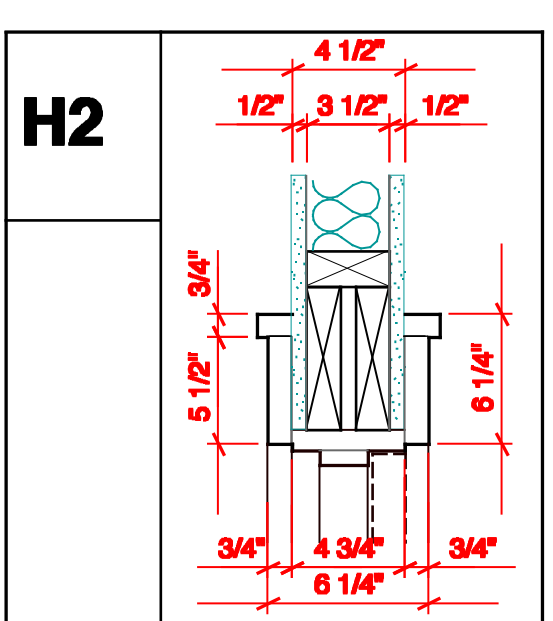
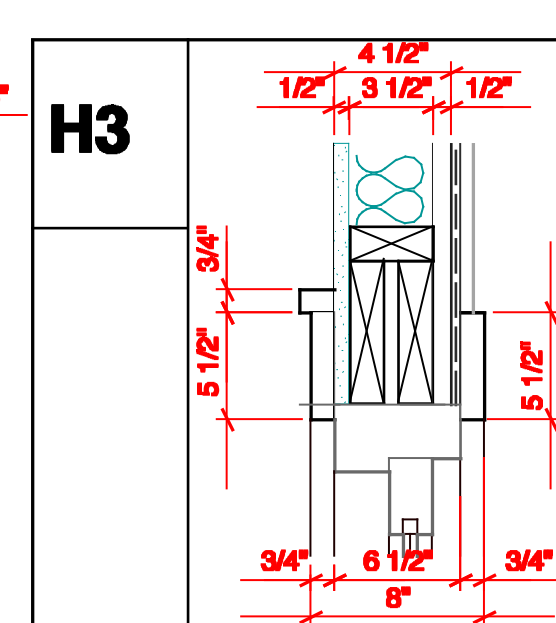
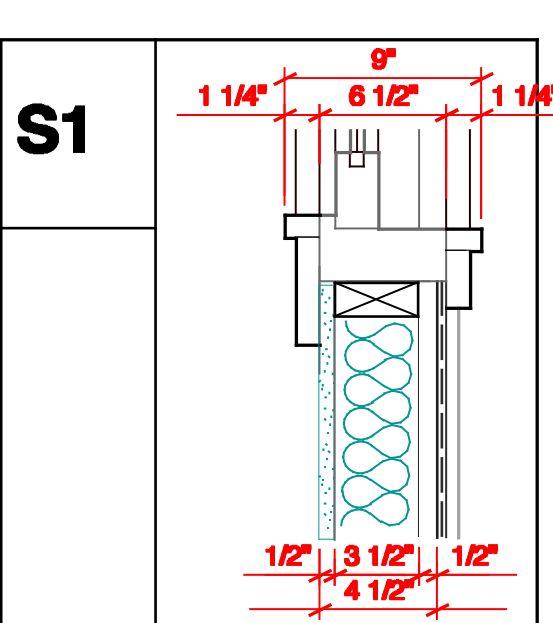
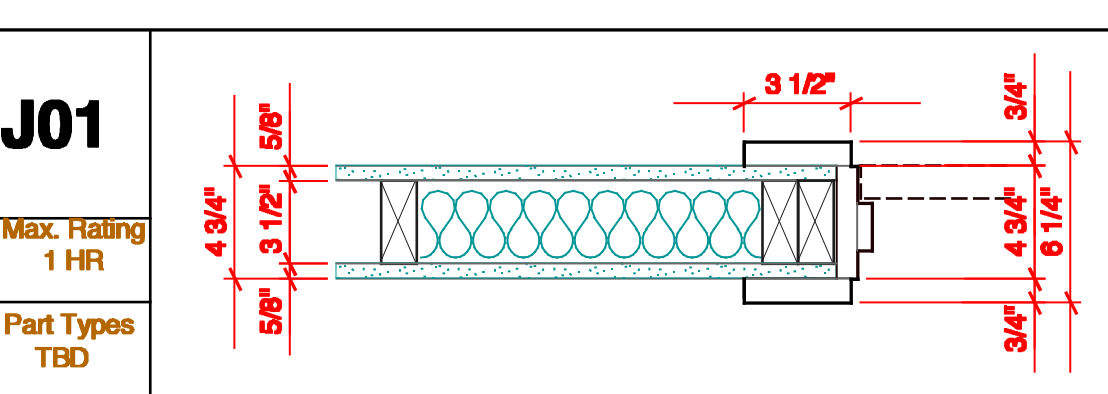
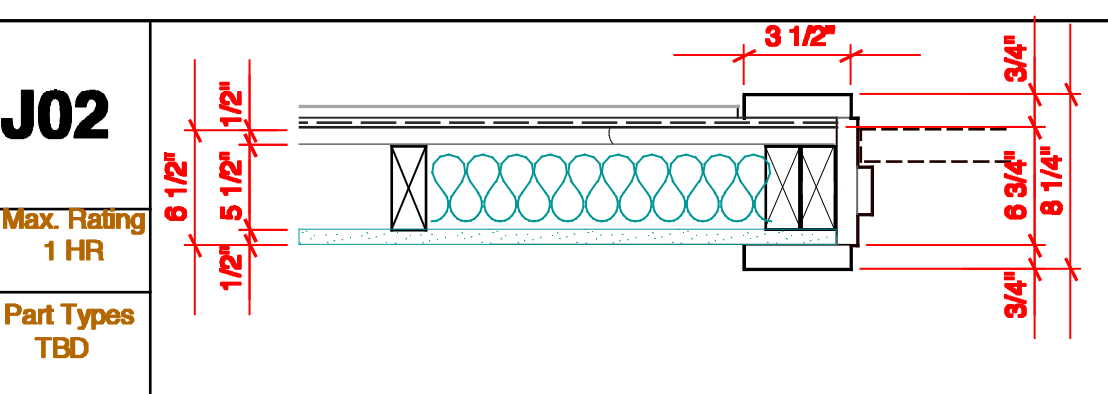
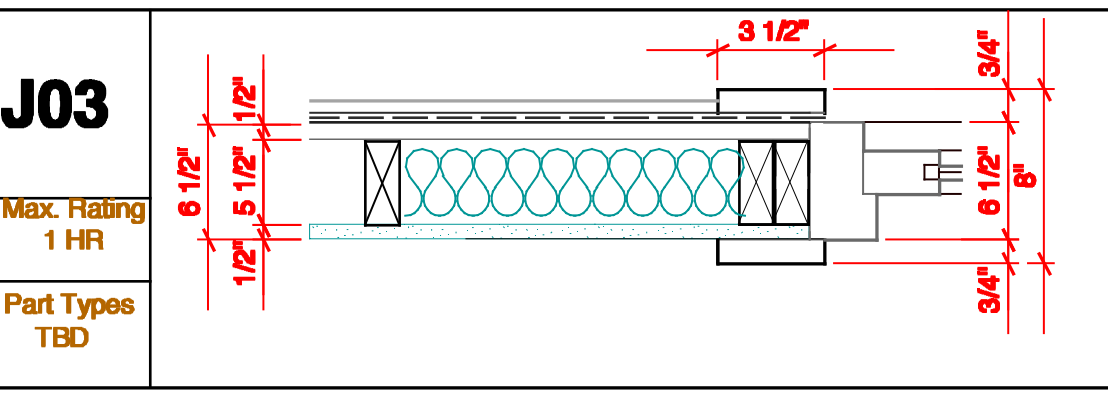


DOOR NO.	LOCATION (opens into)	LABEL	MATERIAL	TYPE	FRAME				DOOR				REMARKS		
					JAMB OPENING		DETAIL		TYPE	MATERIAL	THRESHOLD	UNDERCUT		HARDWARE	SECURITY
					WIDTH	HEIGHT	HEAD	JAMB							
101	Porch - Entry	60 Min	HM	F1	3'-4"	6'-10"	6 1/2"	H3	J01	D1	FG	ALUM	none	A	New outswing door with leaded glass, alum. clad, tempered low-e glass, delayed egress locks.
102	Hall - Entry	60 Min	HM	F1	3'-4"	6'-10"	7"	H1	J02	D2	WD	ALUM	none	B	Solid core wood veneer (or equity) door with tempered lites.
103	Hall - Bath	none	WD	F1	2'-9"	6'-9"	4 1/2"	H2	J01	D2	WD	none	1/2"	C	
104	Bedroom - Bath	none	WD	F2	5'-9"	6'-9"	4 1/2"	H2	J01	D2	WD	none	1/2"	C	
105	Hall - Bedroom	none	WD	F1	2'-9"	6'-9"	4 1/2"	H2	J01	D2	WD	none	1/2"	C	
106	Bedroom - Bedroom	none	WD	F1	2'-9"	6'-9"	4 1/2"	H2	J01	D2	WD	none	1/2"	C	
107	Hall - Bedroom	none	WD	F1	2'-9"	6'-9"	4 1/2"	H2	J01	D2	WD	none	1/2"	C	
108	Bedroom - Bedroom	none	WD	F1	2'-9"	6'-9"	4 1/2"	H2	J01	D2	WD	none	1/2"	C	
109	Hall - Bath	none	WD	F1	2'-9"	6'-9"	4 1/2"	H2	J01	D2	WD	none	1/2"	C	
110	Hall - Bedroom	none	WD	F1	2'-9"	6'-9"	4 1/2"	H2	J01	D2	WD	none	1/2"	C	
201	Hall - Entry	60 Min	HM	F1	3'-4"	6'-10"	7"	H1	J02	D2	WD	ALUM	none	B	Solid core wood veneer (or equity) door with tempered lites.
301	Hall - Entry	60 Min	HM	F1	3'-4"	6'-10"	7"	H1	J02	D2	WD	ALUM	none	B	Solid core wood veneer (or equity) door with tempered lites.



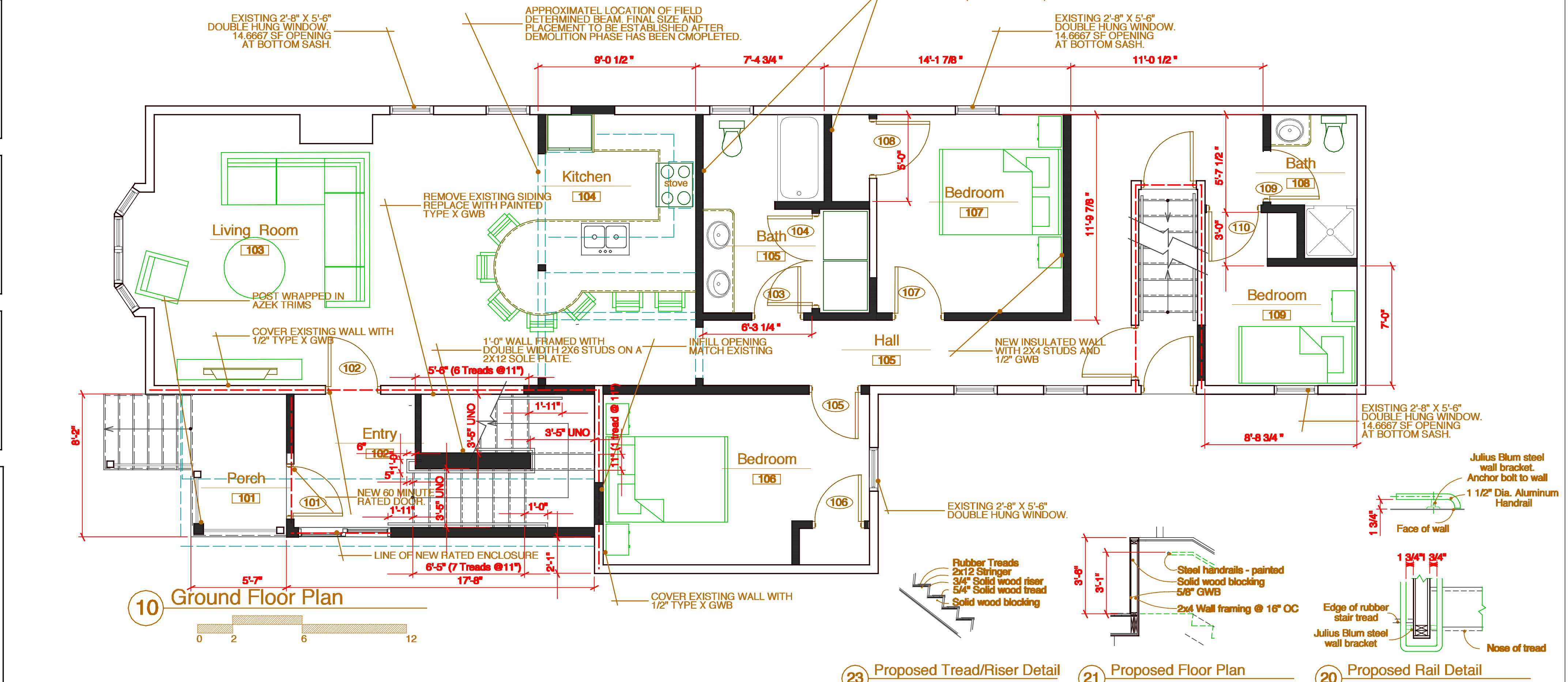
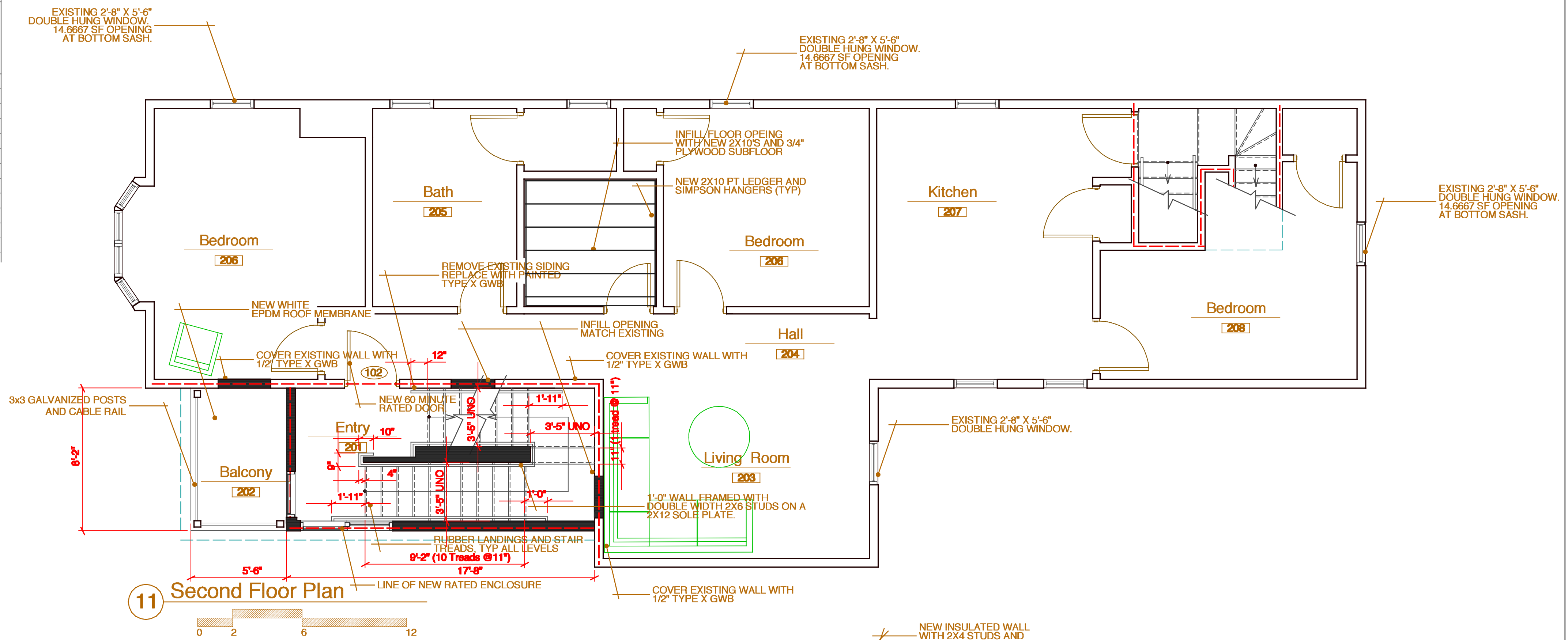
HARDWARE SCHEDULE		
Hardware A	Hardware B	Hardware C
Mortise Lock	Mortise Lock	Bored Privacy Lock
Hinges	Hinges	Hinges
Strike	Strike	Strike
Silencers	Silencers	Silencers
Door Stop	Door Stop	Door Stop
Closer	Closer	Closer
Weatherstripping	Weatherstripping	Weatherstripping
Smoke Seals	Smoke Seals	Smoke Seals



J1 Jamb detail designation
 Max. Rating 45 Minutes
 Head Detail D1, D3
 Part Types 306-309, 301-304

1. All doors in sound insulated partitions shall be sound gasketed, unless noted otherwise.
 2. All frames in sound insulated partitions shall be sealed with acoustic sealant between the wall sheathing and the frame backend, unless noted otherwise.
 3. Refer to jamb designation on Door Schedule for details, materials, and dimensions, typ.
 4. Refer to Door Schedule for additional information.

Frame / Door Notes



23 Proposed Tread/Riser Detail, 21 Proposed Floor Plan, 20 Proposed Rail Detail