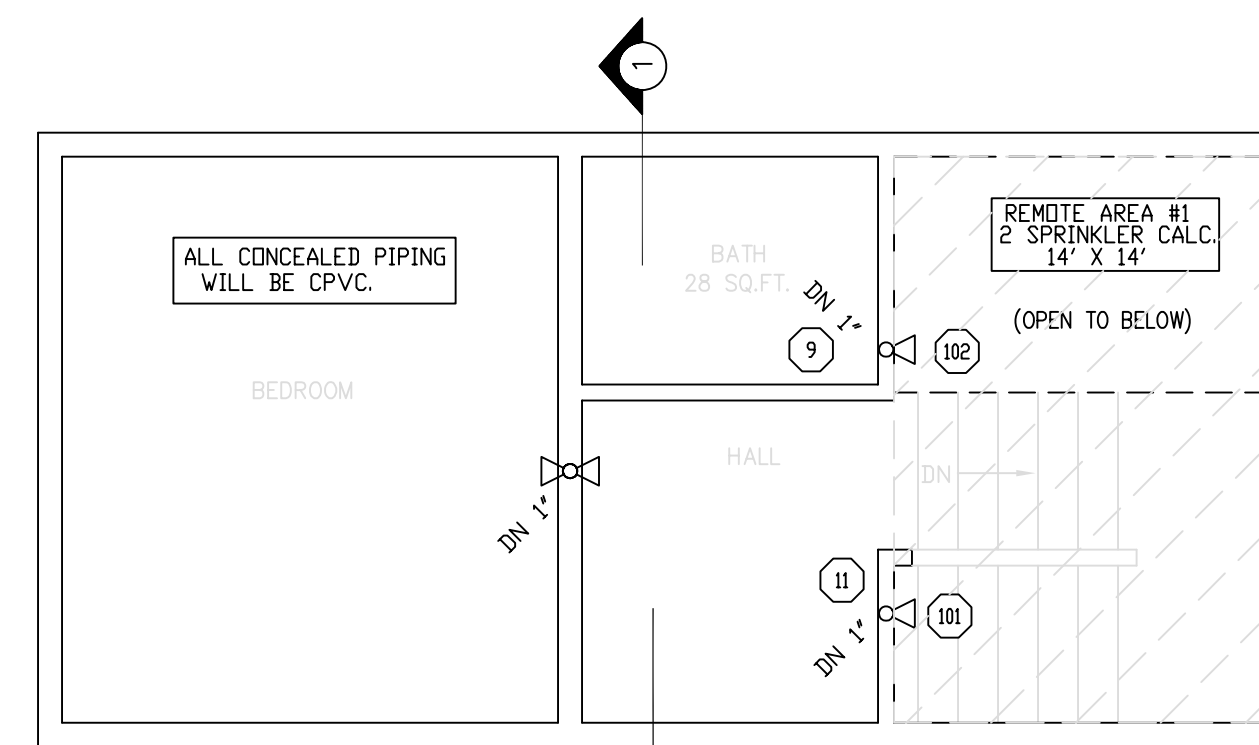


NOTE ON PLAN: "A" DIMENSION  
 PIPE SIZES 1" THROUGH 4" - ROD SIZE 3/8"  
 PIPE SIZES 5" THROUGH 8" - ROD SIZE 1/2"

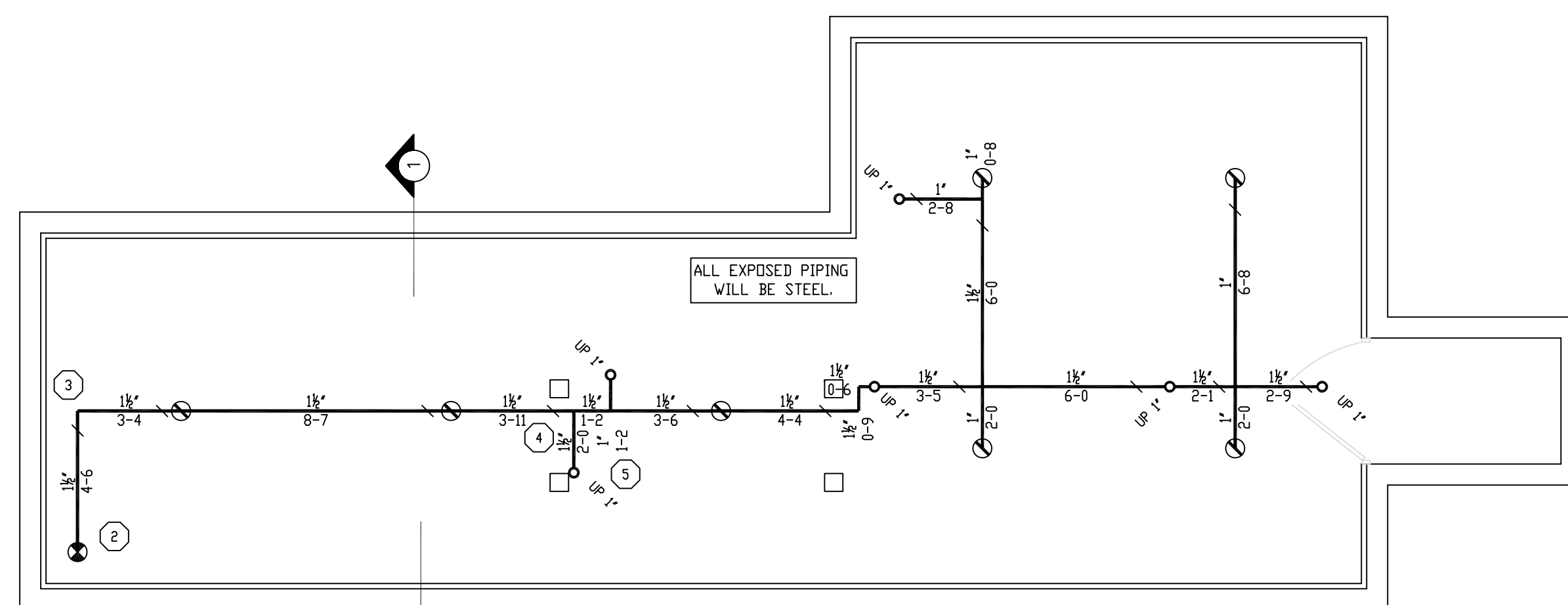
TYPE #10 HANGER

HYDRAULIC DESIGN DATA	
System # & Area	#1 - #1
No. of Sprinklers	2
Density	0.05 GPM
Designed Area	2 SPRINK.
Hose Allowance	N/A GPM
Water Flow Rate	48 GPM
Residual Pressure at Base of Riser	54 PSI
Safety Factor at Base of Riser	6.45 PSI



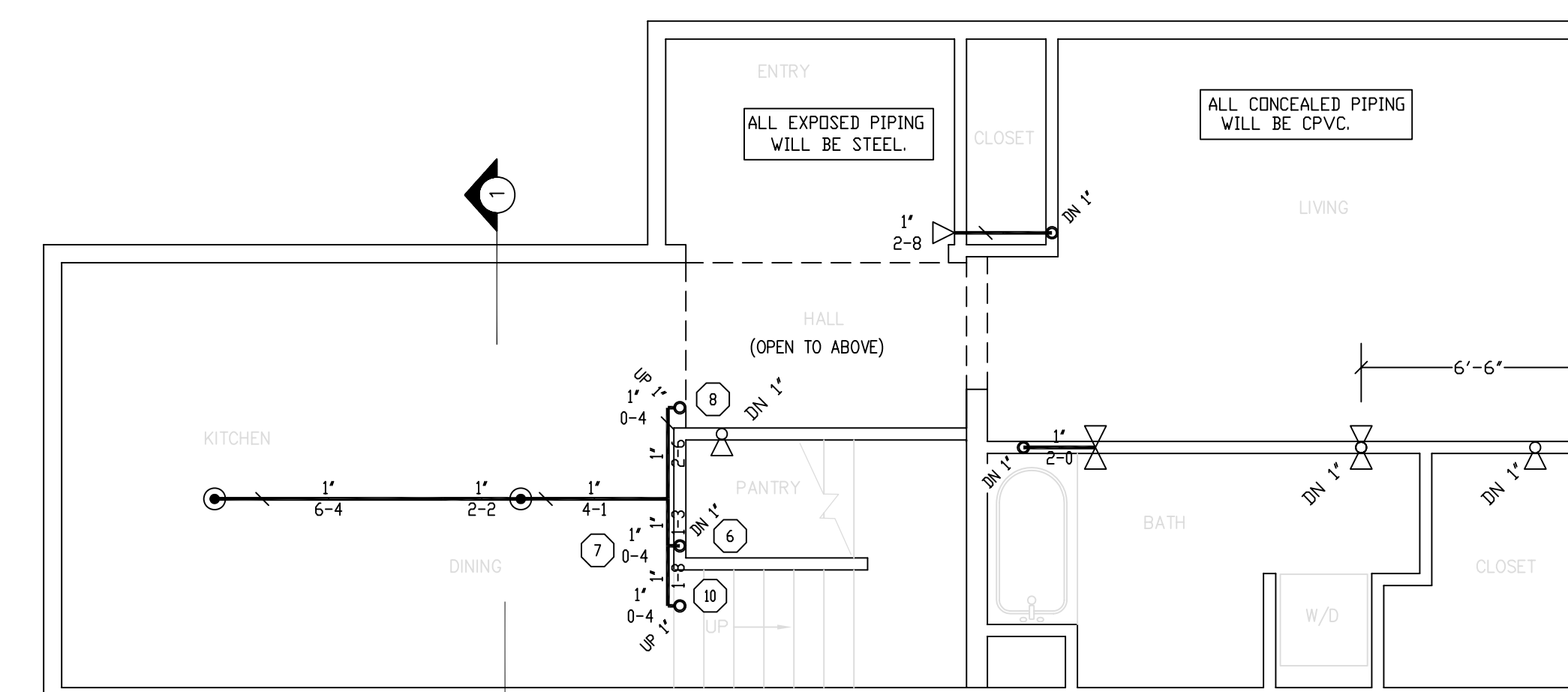
SECOND FLOOR FIRE PROTECTION

SCALE 1/4"=1'-0" QUANTITY Ⓞ = 4



BASEMENT FIRE PROTECTION

SCALE 1/4"=1'-0" QUANTITY Ⓞ = 7



GROUND FLOOR FIRE PROTECTION

SCALE 1/4"=1'-0" QUANTITY Ⓞ = 2  
 QUANTITY Ⓞ = 7

REVISIONS	NOTES	SPRINKLER TYPE	IDENTIFICATION NO.	MFG.	ESC.	MODEL	FINISH	ORIFICE	TEMP.	SYMBOL	QUANT.
	K=4.9 PENDANT SPRINKLER COVERAGE: 16'X36'	QUICK RESP. PENDANT K=4.9	TY2234	TYCD	N/A	LFII	BRASS	1/2"	155°	Ⓞ	7
	K=4.4 SIDEWALL SPRINKLER COVERAGE: 14'X14'	QUICK RESP. PENDANT K=4.9	TY2234	TYCD	N/A	LFII	WHITE	1/2"	155°	Ⓞ	2
		QUICK RESP. SIDEWALL K=4.4	TY2334	TYCD	2 PIECE	LFII	WHITE	1/2"	155°	Ⓞ	11
TOTAL SPRINKLERS THIS DRAWING											20

STANDARD SYMBOLS	STANDARD SYMBOLS
<ul style="list-style-type: none"> <li>POST INDICATOR VALVE</li> <li>KEY VALVE</li> <li>FIRE HYDRANT</li> <li>FIRE DEPT. CONNECTION</li> <li>O.S. &amp; Y GATE VALVE</li> <li>SWING CHECK VALVE</li> <li>NEW UNDERGROUND</li> <li>EXIST UNDERGROUND</li> </ul>	<ul style="list-style-type: none"> <li>ALARM CHECK VALVE</li> <li>RISER W/ALARM VALVE</li> <li>RISER W/DRY VALVE</li> <li>RISER W/ELEC. FLOW SWITCH</li> <li>RISER W/DELUGE VALVE</li> <li>WATER MOTOR BELL</li> <li>ELECTRIC BELL</li> <li>FLUSH FIRE DEPT. CONNECTION</li> </ul>

INSPECTIONS
1.
2.
3.
4.
5.
RESPONSIBLE MANAGING SUPERVISOR #348
CONTRACTOR LICENSE #295

82 CUMBERLAND AVENUE  
 PORTLAND, MAINE 04101

FIRE PROTECTION PLAN

FREEDOM FIRE PROTECTION, INC.  
 209 QUAKER RIDGE ROAD  
 CASCO, MAINE 04015

JOB No. M0150  
 DATE 12/1/13  
 DRAWN BY M/JN  
 SCALE AS NOTED

SHEET No. FP-2 of 2