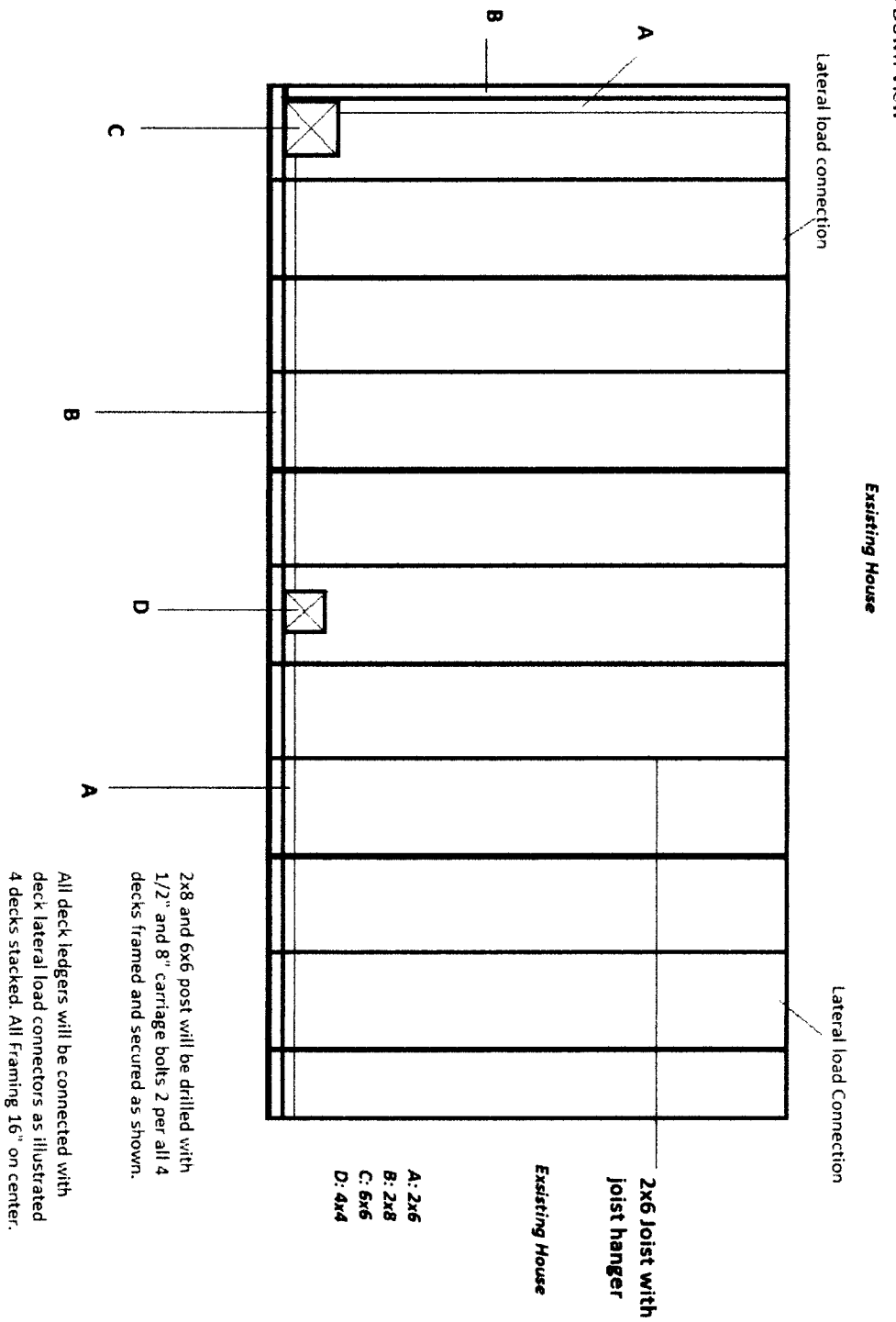


Top Down View



Lateral load connection

Existing House

Lateral load Connection

2x6 Joist with
Joist hanger

Existing House

- A: 2x6
- B: 2x8
- C: 6x6
- D: 4x4

2x8 and 6x6 post will be drilled with
1/2" and 8" carriage bolts 2 per all 4
decks framed and secured as shown.

All deck ledgers will be connected with
deck lateral load connectors as illustrated
4 decks stacked. All Framing 16" on center.