

HOOD INFORMATION - Job#1973073

HOOD NO.	TAG	MODEL	LENGTH	MAX. COOKING TEMP.	EXHAUST PLENUM RISER(S)					TOTAL SUPPLY CFM	HOOD CONSTRUCTION	HOOD CONFIG.		
					TOTAL EXH. CFM	WIDTH	LENG.	DIA.	CFM			S.P.	END TO END	ROW
1		5412 SND-2-PSP-F	12' 0.00'	600 Deg.	3000	10'	28"		3000	-0.561'	2250	430 SS 100%	ALONE	ALONE

HOOD INFORMATION

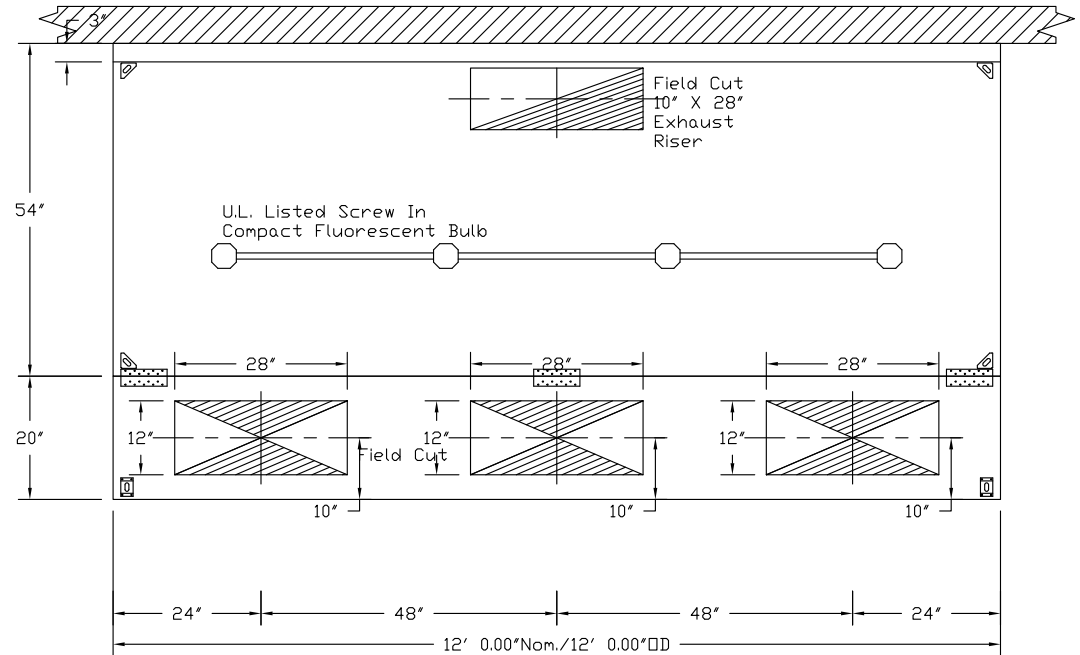
HOOD NO.	TAG	FILTER(S)			LIGHT(S)			WIRE GUARD	LOCATION	UTILITY CABINET(S)			FIRE SYSTEM PIPING	HOOD HANGING WGT
		TYPE	QTY.	HEIGHT	LENGTH	QTY.	TYPE			FIRE SYSTEM TYPE	SIZE	ELECTRICAL MODEL #		
1		SS Baffle with Handles	4	16"	16"	4	Screw In Compact	NO					NO	566 LBS

HOOD OPTIONS

HOOD NO.	TAG	OPTION
1		RIGHT QUARTER END PANEL 23' Top Width, 0' Bottom Width, 23' High 430 SS
		LEFT QUARTER END PANEL 23' Top Width, 0' Bottom Width, 23' High 430 SS

PERFORATED SUPPLY PLENUM(S)

HOOD NO.	TAG	POS.	LENGTH	WIDTH	HEIGHT	TYPE	RISER(S)				
							WIDTH	LENG.	DIA.	CFM	S.P.
1		Front	144'	20"	6"	MUA	12'	28"		750	0.211'
						MUA	12'	28"		750	0.211'
						MUA	12'	28"		750	0.211'



PLAN VIEW - Hood #1
12' 0.00" LONG 5412SND-2-PSP-F
 NOTE: Additional hanging angles provided for hoods 12' and longer.

CUSTOMER APPROVAL TO MANUFACTURE:

Approved as Noted

Approved with NO Exception Taken

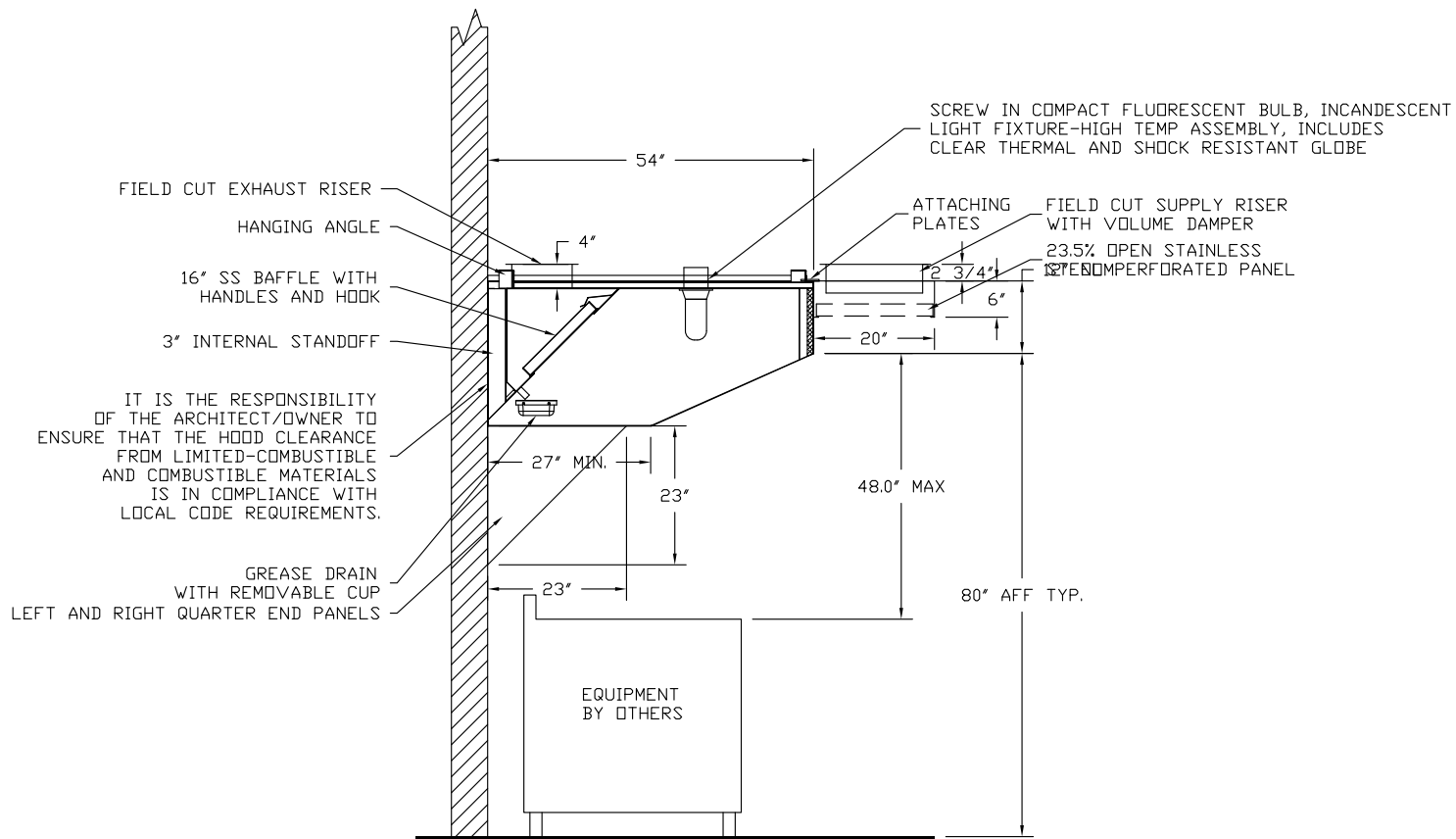
Revise and Resubmit

SIGNATURE _____

Your Title _____ Date _____



JOB Portland #1903467 r4	
LOCATION SCARBOROUGH, ME	
DATE 2/13/2014	JOB # 1973073
DWG # 1	DRAWN BY BFC-21
REV.	SCALE 3/8" = 1'-0"



SECTION VIEW - MODEL 5412SND-2-PSP-F
HOOD - #1

CUSTOMER APPROVAL TO MANUFACTURE:

- Approved as Noted
- Approved with NO Exception Taken
- Revise and Resubmit

SIGNATURE _____

Your Title _____ Date _____



CAPTIVEAIRE

JOB Portland #1903467 r4	
LOCATION SCARBOROUGH, ME	
DATE 2/13/2014	JOB # 1973073
DWG # 2	DRAWN BY BFC-21
REV.	SCALE 3/8" = 1'-0"

EXHAUST FAN INFORMATION - Job#1973073

FAN UNIT NO.	TAG	FAN UNIT MODEL #	CFM	ESP.	RPM	H.P.	Ø	VOLT	FLA	WEIGHT (LBS.)	SONES
1		NCA24HPFA	3000	2.000	1032	3.000	1	230	17.0	292	20

MUA FAN INFORMATION - Job#1973073

FAN UNIT NO.	TAG	FAN UNIT MODEL #	BLOWER	HOUSING	CFM	ESP.	RPM	H.P.	Ø	VOLT	FLA	WEIGHT (LBS.)	SONES
2		A1-G10	G10	A1	2250	0.500	877	1.500	1	230	10.2	243	18

FAN OPTIONS

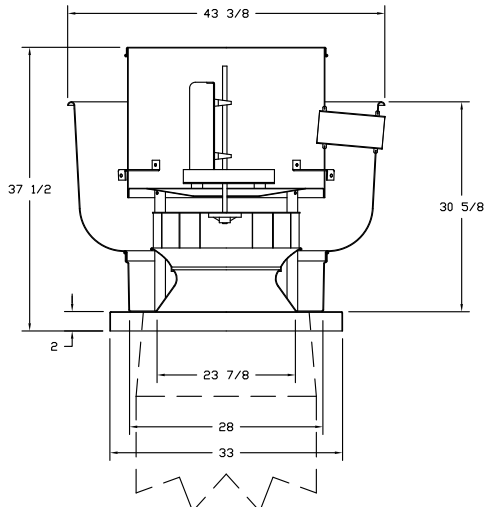
FAN UNIT NO.	TAG	OPTION (Qty. - Descr.)
1		1 - Grease Box
		1 - Fan Base Ceramic Seal - For Grease Ducts
2		1 - Gravity Backdraft Damper For Size 1 Housing

CURB ASSEMBLIES

NO.	ON FAN	WEIGHT	ITEM	SIZE
1	# 1	48 LBS	Curb	31.500"W x 31.500"L x 20.000"H SPECIFY Pitch Vented Hinged
2	# 2	29 LBS	Curb	21.000"W x 21.000"L x 20.000"H SPECIFY Pitch

ROOF PITCH FOR CURB(S) MUST BE SPECIFIED PRIOR TO RELEASING ORDER
 ____:12

FAN #1 NCA24HPFA - EXHAUST FAN



FEATURES:

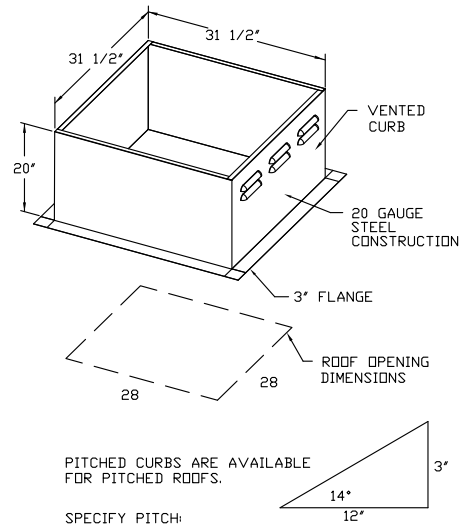
- ROOF MOUNTED FANS
- RESTAURANT MODEL
- UL705 AND UL762
- AMCA SOUND AND AIR CERTIFIED
- WIRING FROM MOTOR TO DISCONNECT SWITCH
- WEATHERPROOF DISCONNECT
- HIGH HEAT OPERATION 300°F (149°C)
- GREASE CLASSIFICATION TESTING

NORMAL TEMPERATURE TEST
 EXHAUST FAN MUST OPERATE CONTINUOUSLY WHILE EXHAUSTING AIR AT 300°F (149°C) UNTIL ALL FAN PARTS HAVE REACHED THERMAL EQUILIBRIUM, AND WITHOUT ANY DETERIORATING EFFECTS TO THE FAN WHICH WOULD CAUSE UNSAFE OPERATION.

ABNORMAL FLARE-UP TEST
 EXHAUST FAN MUST OPERATE CONTINUOUSLY WHILE EXHAUSTING BURNING GREASE VAPORS AT 600°F (316°C) FOR A PERIOD OF 15 MINUTES WITHOUT THE FAN BECOMING DAMAGED TO ANY EXTENT THAT COULD CAUSE AN UNSAFE CONDITION.

OPTIONS

- GREASE BOX
- FAN BASE CERAMIC SEAL - FOR GREASE DUCTS



PITCHED CURBS ARE AVAILABLE FOR PITCHED ROOFS.
 SPECIFY PITCH:
 EXAMPLE: 7/12 PITCH = 30° SLOPE

DUCTWORK BETWEEN EXHAUST RISER ON HOOD AND FAN (BY OTHERS)

CUSTOMER APPROVAL TO MANUFACTURE:

Approved as Noted

Approved with NO Exception Taken

Revise and Resubmit

SIGNATURE _____

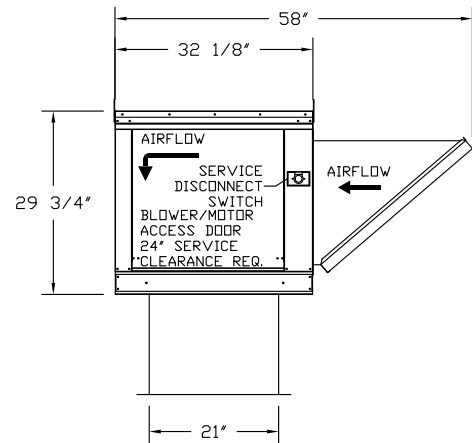
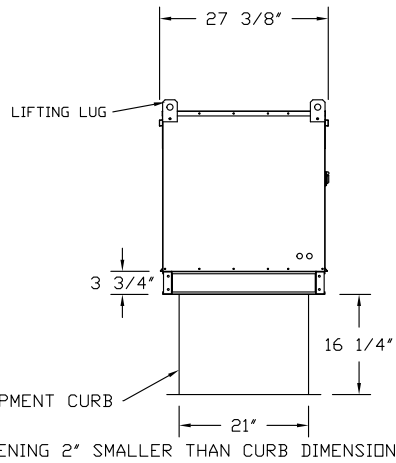
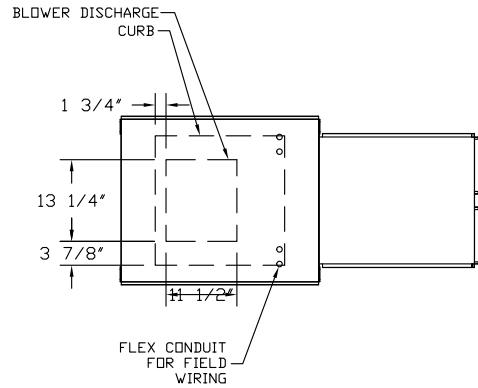
Your Title _____ Date _____



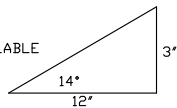
JOB Portland #1903467 r4	
LOCATION SCARBOROUGH, ME	
DATE 2/13/2014	JOB # 1973073
DWG # 3	DRAWN BY BFC-21
REV.	SCALE 3/8" = 1'-0"

FAN #2 A1-G10 - SUPPLY FAN

1. UNTEMPERED SUPPLY UNIT WITH 10" BLOWER IN SIZE #1 HOUSING
2. INTAKE HOOD WITH EZ FILTERS-LOW CFM
3. DOWN DISCHARGE - AIR FLOW RIGHT -> LEFT
4. GRAVITY BACK DRAFT DAMPER, 16" WIDE X 18" HIGH, STANDARD GALVANIZED CONSTRUCTION, 1 1/4" REAR FLANGE, FOR SIZE 1 UNTEMPERED FAN HOUSING (S181)



PITCHED CURBS ARE AVAILABLE FOR PITCHED ROOFS.



SPECIFY PITCH:
EXAMPLE: 7/12 PITCH = 30° SLOPE

CUSTOMER APPROVAL TO MANUFACTURE:

Approved as Noted

Approved with NO Exception Taken

Revise and Resubmit

SIGNATURE _____

Your Title _____ Date _____

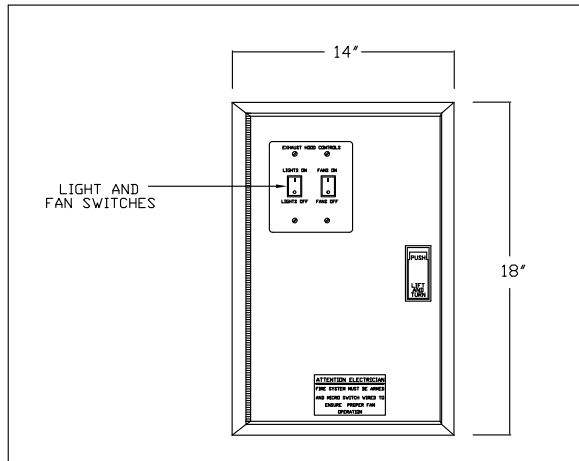


JOB Portland #1903467 r4	
LOCATION SCARBOROUGH, ME	
DATE 2/13/2014	JOB # 1973073
DWG # 4	DRAWN BY BFC-21
REV.	SCALE 3/8" = 1'-0"

ELECTRICAL PACKAGES - Job#1973073

NO.	TAG	PACKAGE #	LOCATION	SWITCHES		OPTION	FANS CONTROLLED				
				LOCATION	QUANTITY		TYPE	Ø	H.P.	VOLT	FLA
1		21111002	Wall Mount In SS Box	SS Wall Mount Box	1 Light 1 Fan	Exhaust in Fire	Exhaust	1	3.000	230	17.0
							Supply	1	1.500	230	10.2

DETAIL OF REMOTE S/S BOX



CUSTOMER APPROVAL TO MANUFACTURE:

- Approved as Noted
- Approved with NO Exception Taken
- Revise and Resubmit

SIGNATURE _____
 Your Title _____ Date _____





CAPTIVEAIRE

JOB Portland #1903467 r4	
LOCATION SCARBOROUGH, ME	
DATE 2/13/2014	JOB # 1973073
DWG # 5	DRAWN BY BFC-21
REV.	SCALE 3/8" = 1'-0"

Exhaust Fan Wiring

JOB 1973073 - Portland #1903467 r4

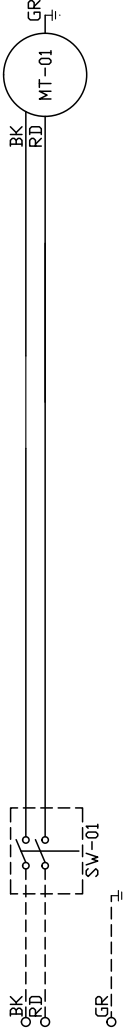
DRAWING NUMBER EXH1973073-1

SHIP DATE 2/13/2014

MODEL NCA24HPFA

Installed Options

1



Label Description Location
 MT-01 Fan Motor [2]

SW-01 Main disconnect switch [2]

2

3

4

5

6

7

8

9

10

11

12

13

14

15

16

17

18

19

20

21

22

23

EXHAUST MOTOR_INFO
 3HP-230V-1P-17.0FLA

ELECTRICAL INFORMATION
 MOTOR CONTROL MCF: 533A
 MOTOR/CONTROL MCF: 534

NOTES
 - - - - DENOTES FIELD WIRING
 _____ DENOTES INTERNAL WIRING

WIRE COLOR
 BK - BLACK YW - YELLOW
 BL - BLUE GR - GREEN
 BR - BROWN GY - GRAY
 OR - ORANGE PR - PURPLE
 RD - RED PK - PINK
 WH - WHITE

AirHandler Wiring

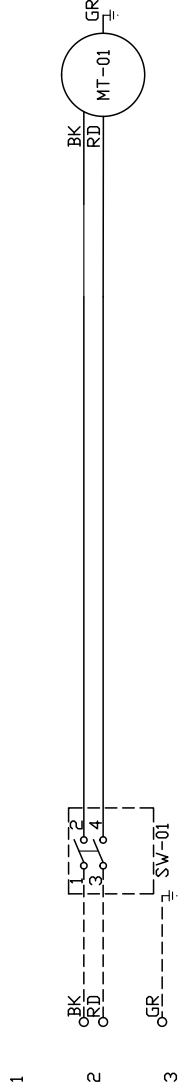
JOB 1973073 - Portland #1903467 r4

DRAWING NUMBER A1973073-2

SHIP DATE 2/13/2014

MODEL A1-G10

ATTENTION ELECTRICIAN!
 DROP FOR DISCONNECT CONNECTION IS FACTORY SUPPLIED
 CONNECT POWER TO THE DROP



Installed Options

Label	Component Description	Location
-------	-----------------------	----------

MT-01	Supply motor	[20]
-------	--------------	------

SW-01 Main disconnect switch [20]

SUPPLY	MOTOR INFO
	1.5HP-230V-1P-10.2FLA

ELECTRICAL INFORMATION:
 MOTOR/CONTROL CIRCUIT MOP: 23,8A
 MOTOR/CONTROL CIRCUIT MOP: 20A

NOTES
 - - - - DENOTES FIELD WIRING
 _____ DENOTES INTERNAL WIRING

WIRE COLOR
 BK - BLACK YW - YELLOW
 BL - BLUE GR - GREEN
 BR - BROWN GY - GRAY
 OR - ORANGE PR - PURPLE
 RD - RED PK - PINK
 WH - WHITE

1
2
3
4
5
6
7
8
9
10
11
12
13
14
15
16
17
18
19
20
21
22
23

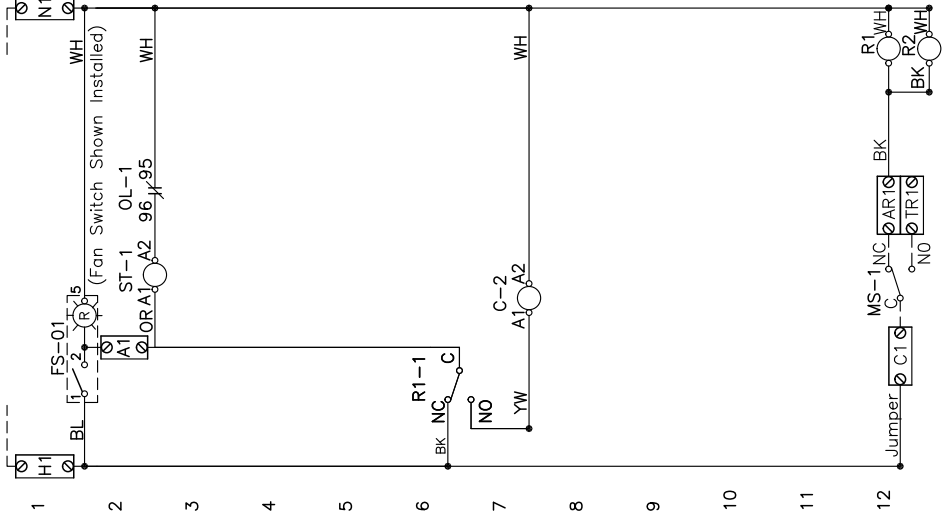
DRAWING NUMBER 21111002

JOB NUMBER 1973073

DRAWN BY

CONTROL INPUT 120VAC H1=LINE, N1=NEUTRAL 15A BKR - DO NOT WIRE TO SHUNT TRIP BREAKER

220V/1Ph, W/ 1 Exhaust Fan, 1 Supply Fan, Exhaust in Fire

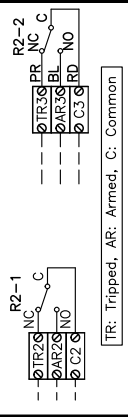


COMPONENT PARTS LIST

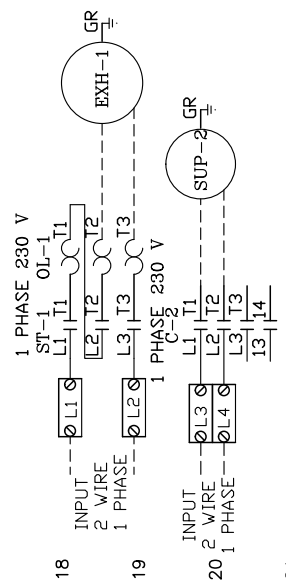
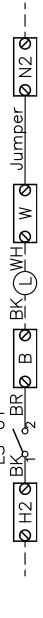
LABEL	DESCRIPTION
C-x	Contact
ST-x	Starter
OL-x	Overload
FS-xx	Fan Switch (Lighted)
LS-xx	Light Switch
L	Hood Light(s)
MS-x	MicroSwitch (Ansu/PyroChem)
Rx	Relay DPDT - 34.110.0184.0 + Socket

SPARE FIRE DRY CONTACTS

SPARE RELAY CONTACTS USED WHEN FIRE SYSTEM DISCHARGES TO SHUT DOWN EQUIPMENT OR PROVIDE SIGNALS. (NOT FOR BUILDING FIRE ALARM)



15 LIGHT INPUT 120VAC H2-H5=LINE, N2-N5=NEUTRAL 15A BKR (MAX 1400W PER CIRCUIT)



NOTES

--- DENOTES FIELD WIRING
 - - - DENOTES INTERNAL WIRING

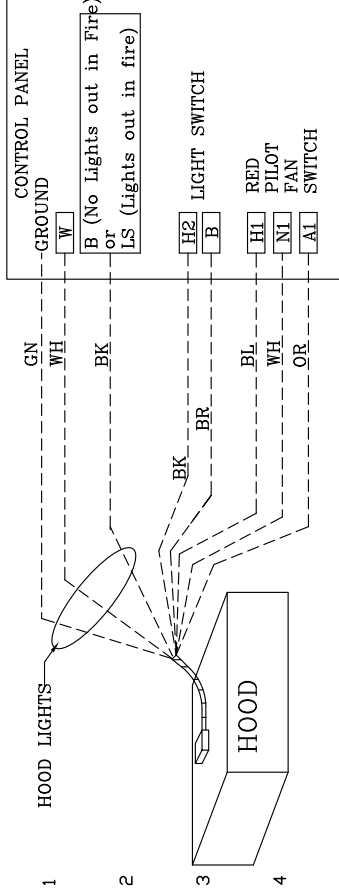
WIRE COLOR

WIRE COLOR	MS-x MicroSwitch
BK - BLACK	C-RD
BL - BLUE	NO-BK
BR - BROWN	NC-BR
OR - ORANGE	
OR/BL - ORANGE/BLUE (STRIPE)	
RD - RED	
BL/RD - BLUE/RED (STRIPE)	
WH - WHITE	
RD/GN - RED/GREEN (STRIPE)	

DRAWING SHOWN DE-ENERGIZED

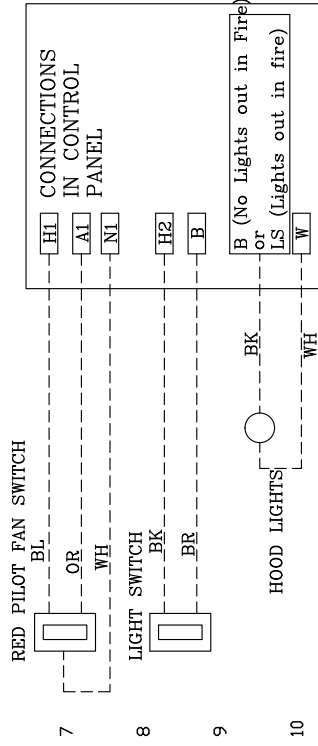
NOTE: IF WALL MOUNT PREWIRE, OR FIELD INSTALLED FIRE SYSTEM MICROSWITCH, THE TERMINALS SHOWING FACTORY WIRING MUST BE FIELD WIRED.

HOOD TO CONTROL PANEL

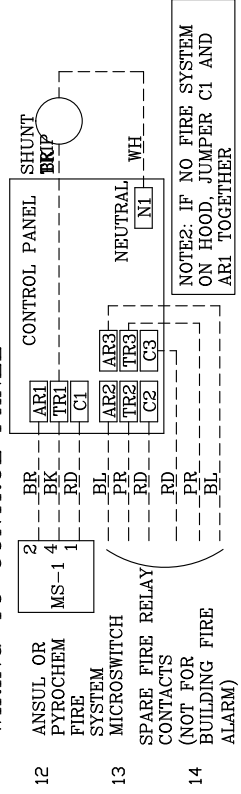


5 Light switch and fan switch mounted on the face of the hood and control panel mounted separately then field wire to the control panel as shown.

FIELD WIRED SWITCHES TO CONTROL PANEL

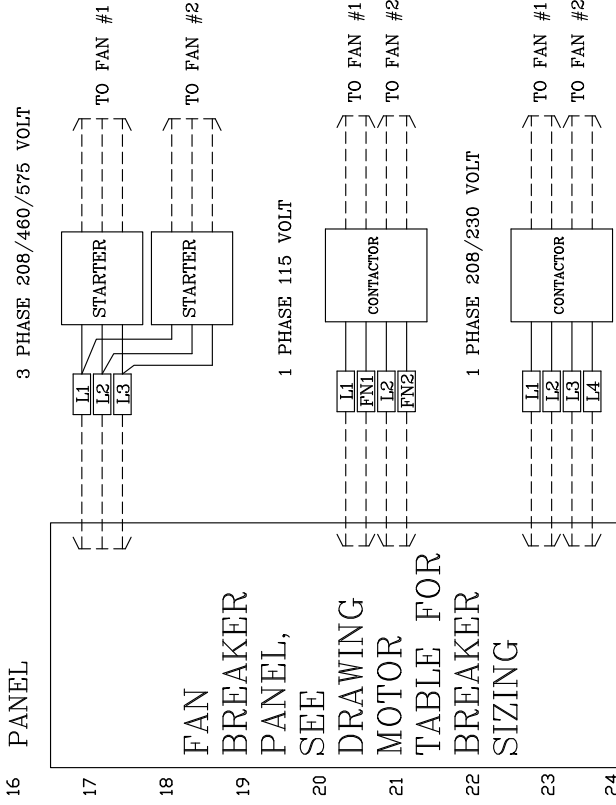


FIRE SYSTEM MICROSWITCH 120VAC SHUNT TRIP WIRING TO CONTROL PANEL BREAKER WIRING

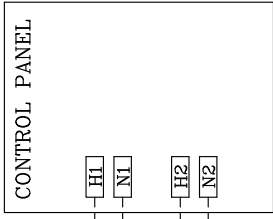
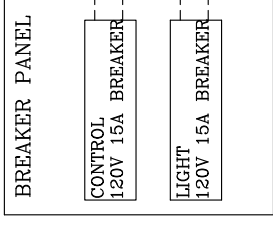


15 NOTE1: BUILDING FIRE ALARM IS TO BE WIRED TO THE "ALARM INITIATING SWITCH" INSIDE THE FIRE SYSTEM AUTOMAN

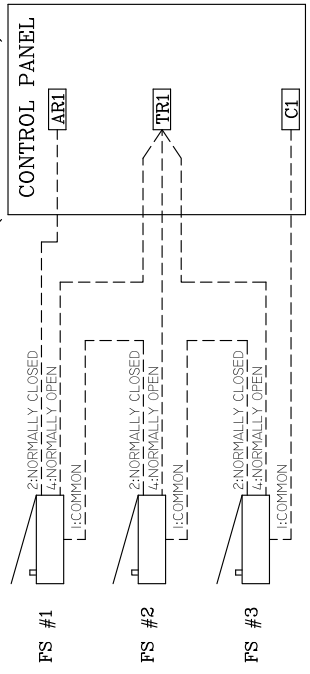
FAN WIRING TO CONTROL PANEL



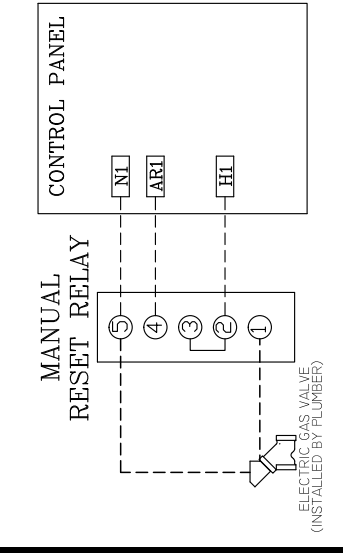
POWER FEED FOR CONTROLS AND LIGHTING



MICRO-SWITCHES WIRING WHEN MULTIPLE FIRE SYSTEMS CONNECTED TO ONE ELECTRICAL PANEL (3 SHOWN HERE)



ELECTRIC GAS VALVE WITH RESET RELAY



NOTES

--- DENOTES FIELD WIRING
 - - - - - DENOTES INTERNAL WIRING

WIRE COLOR

BK	-	BLACK	YW	-	YELLOW
BL	-	BLUE	GY	-	GRAY
BR	-	BROWN	PR	-	PURPLE
OR	-	ORANGE	DR/BL	-	ORANGE/BLUE
RD	-	RED	(STRIPE)	-	(STRIPE)
WH	-	WHITE	BL/RD	-	BLUE/RED
GN	-	GREEN	(STRIPE)	-	(STRIPE)
RD/GN	-	RED/GREEN		-	