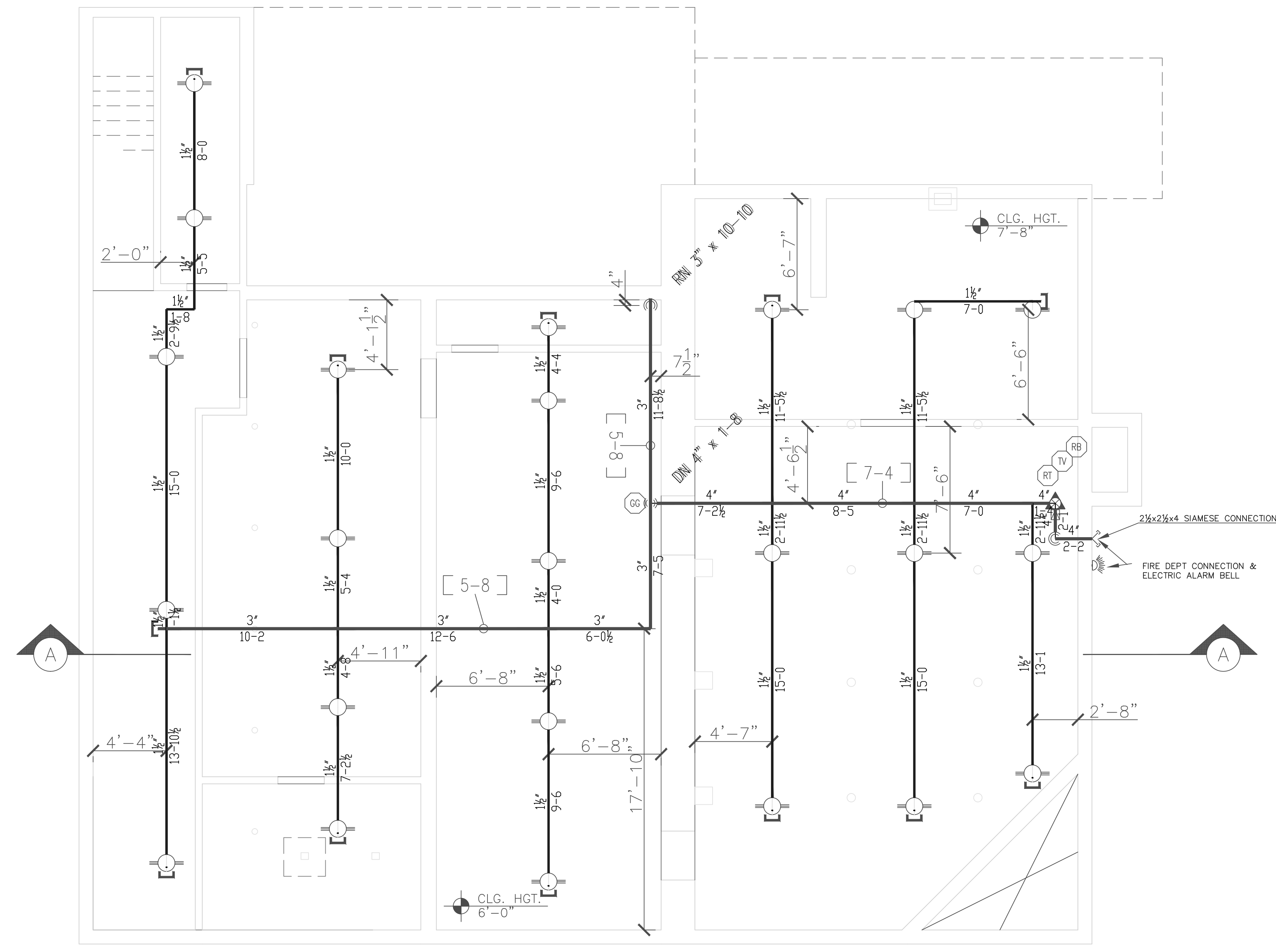


NFPA 13R EXCEPTIONS

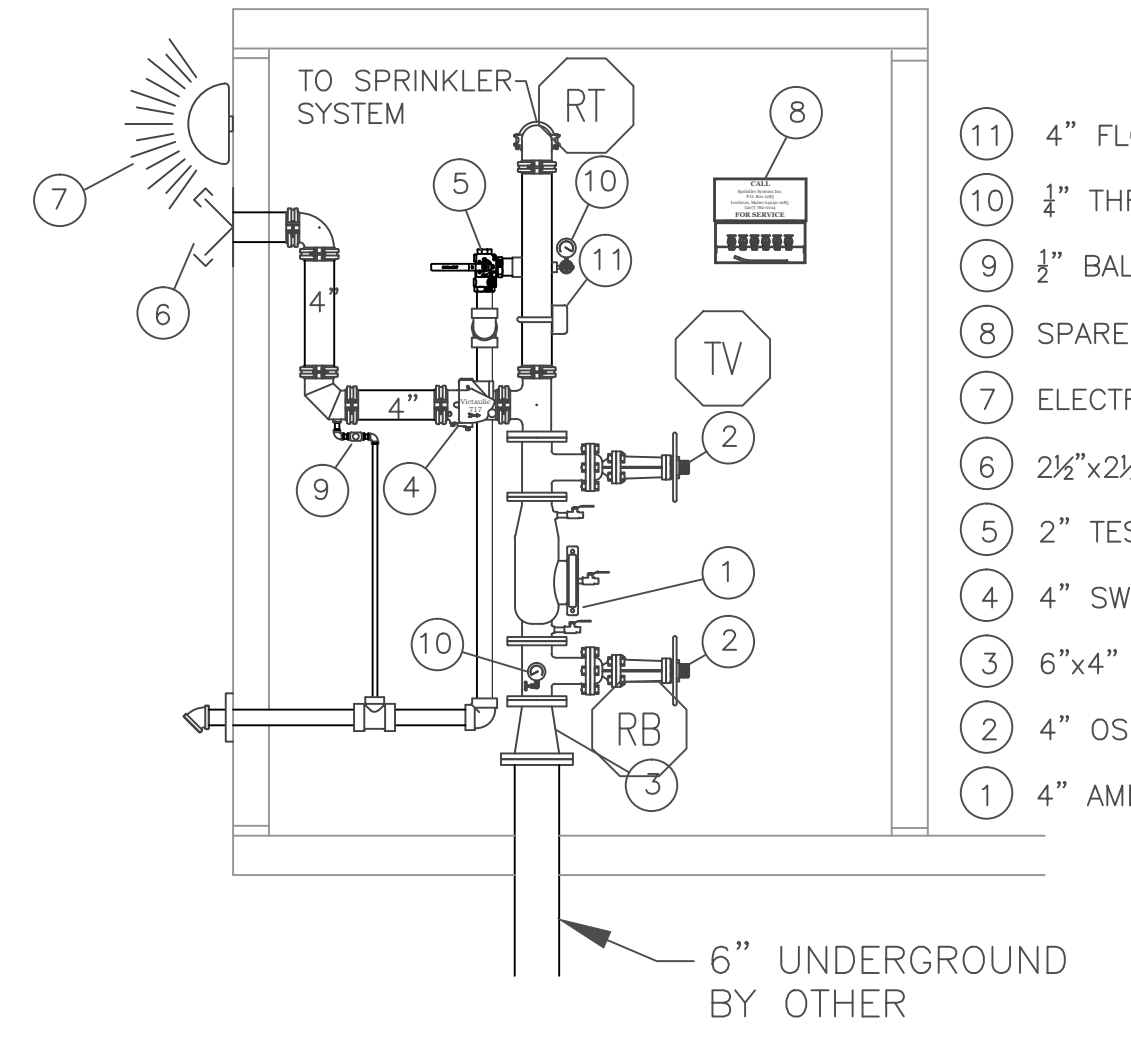
EXCEPTION NO. 1. SPRINKLERS SHALL NOT BE INSTALLED IN ALL AREAS.  
 EXCEPTION NO. 2. SPRINKLERS SHALL NOT BE REQUIRED IN BATHROOMS WHERE THE AREA DOES NOT EXCEED 35 FEET SQUARED AND THE WALLS AND CEILING, INCLUDING WALLS AND CEILING BEHIND PARTITIONS, ARE NON-COMBUSTIBLE OF LIMITED COMBUSTIBLE MATERIALS PROVIDING A 15 MINUTE THERMAL BARRIER. THE AREA OCCUPIED BY A NON-COMBUSTIBLE FULL HEIGHT SHOWER/BATHUB ENCLOSURE SHALL NOT BE REQUIRED TO BE ADDED TO THE FLOOR AREA WHEN DETERMINING THE AREA OF THE BATHROOM.  
 EXCEPTION NO. 3. SPRINKLERS SHALL NOT BE REQUIRED IN CLOSET, CLOSETS, LINEN CLOSETS, AND PANTRIES WITHIN THE DWELLING UNITS WHERE THE AREA OF SPACE DOES NOT EXCEED 24 FEET SQUARED, THE LEAST DIMENSION DOES NOT EXCEED 3 FEET, AND THE WALLS AND CEILING ARE SURFACED WITH NON-COMBUSTIBLE MATERIALS AS DEFINED BY NFPA 220, STANDARD ON TYPES OF BUILDING CONSTRUCTION.  
 EXCEPTION NO. 4. SPRINKLERS SHALL NOT BE REQUIRED IN ANY PORCHES, BALCONIES, CORRIDORS, AND STAIRS THAT ARE OPEN TO ADJACENT AREAS.  
 EXCEPTION NO. 5. SPRINKLERS SHALL NOT BE REQUIRED IN ATTICS, PENHOUSE, EQUIPMENT ROOMS, CRAWL SPACES, FLOOR/CEILING SPACES, ELEVATOR SHAFTS, AND OTHER CONCEALED SPACES THAT ARE NOT USED OR INTENDED FOR LIVING PURPOSES OR STORAGE.  
 EXCEPTION NO. 6. SPRINKLERS SHALL NOT BE REQUIRED IN CLOSETS ON EXTERIOR BALCONIES REGARDLESS OF SIZE AS LONG AS THERE ARE NO DOORS OR UNPROTECTED PENETRATIONS FROM THE CLOSET DIRECTLY INTO THE DWELLING UNIT.

GENERAL NOTES:

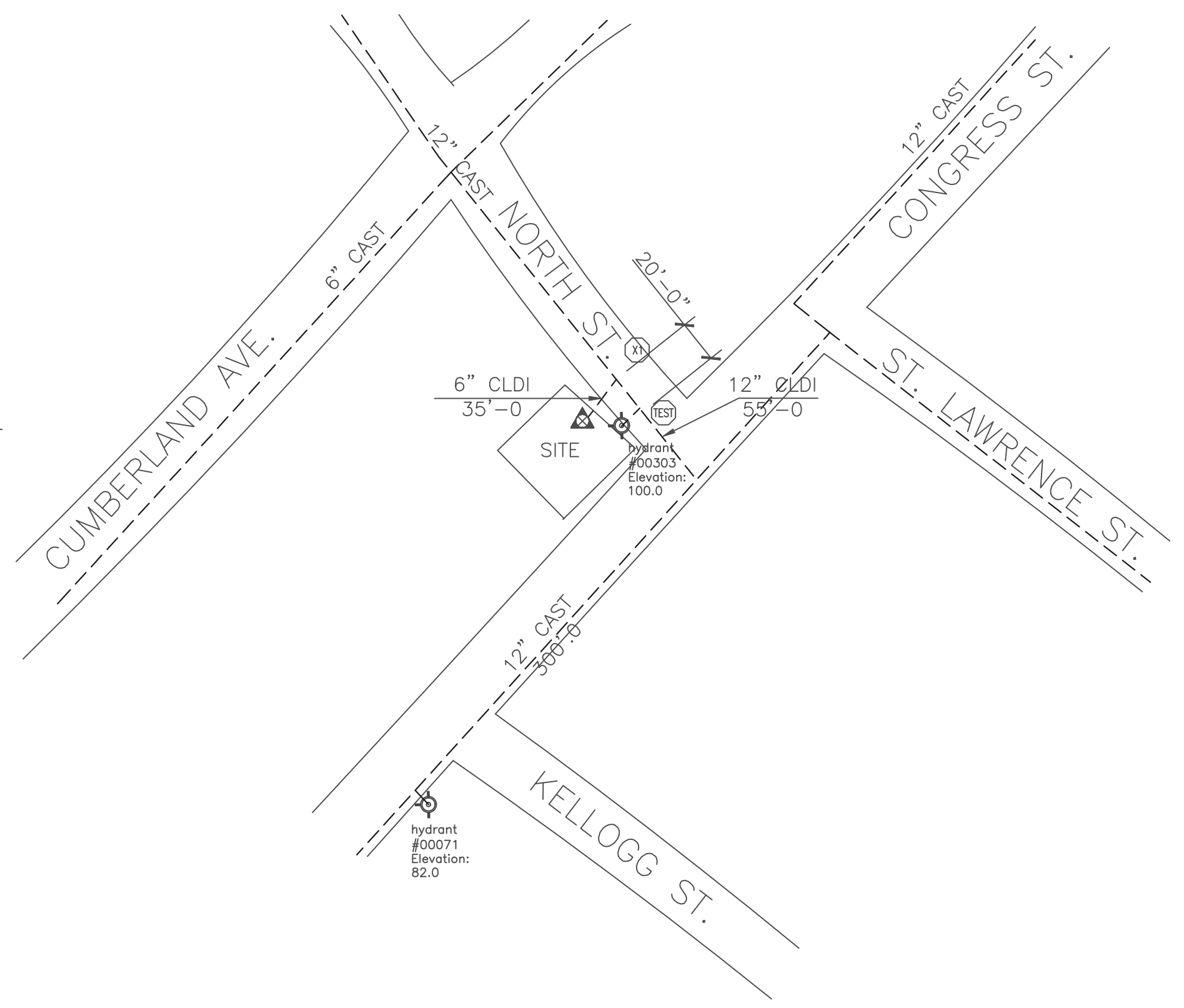
- IT IS THE BUILDING OWNERS RESPONSIBILITY TO PROVIDE ADEQUATE HEAT FOR ALL AREAS IN THE BUILDING PROTECTED BY WET SPRINKLER SYSTEMS AND FOR ALL WATER FILLED SUPPLY PIPES, VALVES AND SYSTEM RISERS IN ALL DRY PIPE SPRINKLER SYSTEMS.
- ALL NEW PIPING IS TO BE HYDROSTATICALLY TESTED AT NOT LESS THAN 200 PSI FOR 2 HOURS, OR AT 50 PSI IN EXCESS OF THE MAXIMUM PRESSURE, WHEN THE MAXIMUM PRESSURE TO BE MAINTAINED IS IN EXCESS OF 150 PSI. (PER NFPA 13)
- WHETHER OR NOT INDICATED ON DRAWINGS, THE FOLLOWING ITEMS ARE TO BE PROVIDED:
  - SPARE HEAD CABINET WITH WRENCH (NFPA 13).
  - PROVISIONS FOR FLUSHING CONNECTIONS AND DRAINING OF ALL PIPE.
  - INSPECTORS TEST CONNECTION SHALL BE PROVIDED FOR EACH SYSTEM
    - A) FOR WET PIPE SYSTEMS SEE NFPA 13)
    - B) FOR DRY PIPE SYSTEMS SEE NFPA 13)
  - AIR PRESSURE SHALL BE MAINTAINED ON ALL DRY PIPE SYSTEMS BY AN APPROVED AUTOMATIC AIR COMPRESSOR OR PLANT AIR SYSTEM SPECIFICALLY APPROVED FOR AND CAPABLE OF AUTOMATICALLY MAINTAINING THE REQUIRED AIR PRESSURE.
  - GRIDDDED WET PIPE SYSTEMS SHALL BE PROVIDED WITH A RELIEF VALVE NOT LESS THAN 1/4" IN SIZE. (NFPA 13).
- ALL PIPE 1" SHALL BE SCHEDULE 40 STEEL WITH MALLEABLE IRON FITTINGS.
- ALL PIPE 1 1/4" AND LARGER, SHALL BE SCHEDULE 10 STEEL, WITH GROOVED COUPLINGS AND VICTAULIC MECHANICAL FITTINGS OR EQUIVALENT.
- A MAJORITY OF THE PIPING ON THE SECOND AND THIRD FLOORS THAT ARE IN CONCEALED SPACES WILL BE CPVC PLASTIC "BLAZEMASTER" PIPING AND FITTINGS.
- ALL MECHANICAL TRADES ARE TO COORDINATE THEIR WORK WITH SPRINKLER WORK AS SHOWN ON THESE PLANS.
- ALL HANGERS AND LOCATIONS ARE TO BE IN ACCORDANCE WITH N.F.P.A. 13.
- ALL PIPING IS TO BE PITCHED IN ACCORDANCE WITH N.F.P.A. 13.
- HYDRAULIC DATA REFERENCE POINTS:
  - CENTER LINE OF PIPE ABOVE FINISH FLOOR 12'-0"
  - BELOW DECK 12"
- PROTECTIVE CAPS ARE TO REMAIN ON THE SPRINKLER HEADS UNTIL AFTER CEILINGS ARE INSTALLED.
- THE SCOPE OF WORK UNDER THIS CONTRACT IS TO EXTEND A WET NFPA 13R SPRINKLER



Basement  
 AREA - 2,330 S.F.  
 ELEV. - 91.5  
 SCALE - 1/4" = 1'-0"



RISER DETAIL & LEGEND  
 NOT TO SCALE



SITE PLAN  
 SCALE: NTS  
 FINISH FLOOR ELEV. 100.0'

HYDRAULIC DATA NAMEPLATE

This Building is protected by a hydraulically designed Automatic Sprinkler System

Location AREA-1

No. of Sprinkler 4

Basis of design

- Density .05 gpm/ft<sup>2</sup>
- Design area of discharge 4 HEAD CALC

System Demand

- Water Flow Rate @ Base/Pump 53.814 gpm
- Residual Pressure @ Base/Pump 37.228 psi

CUSHION = 16.02 psi

HYDRAULIC DATA NAMEPLATE

This Building is protected by a hydraulically designed Automatic Sprinkler System

Location AREA-2

No. of Sprinkler 4

Basis of design

- Density .05 gpm/ft<sup>2</sup>
- Design area of discharge 4 HEAD CALC

System Demand

- Water Flow Rate @ Base/Pump 54.628 gpm
- Residual Pressure @ Base/Pump 38.762 psi

CUSHION = 14.49 psi

HYDRAULICALLY MOST REMOTE

HYDRAULIC DATA NAMEPLATE

This Building is protected by a hydraulically designed Automatic Sprinkler System

Location AREA-3

No. of Sprinkler 11

Basis of design

- Density .20 gpm/ft<sup>2</sup>
- Design area of discharge 951 sq ft

System Demand

- Water Flow Rate @ Base/Pump 253.449 gpm
- Residual Pressure @ Base/Pump 36.597 psi

CUSHION = 14.97 psi

WATER DATA

STATIC 50 PSI

RESIDUAL 44 PSI

FLOW 1047 GPM

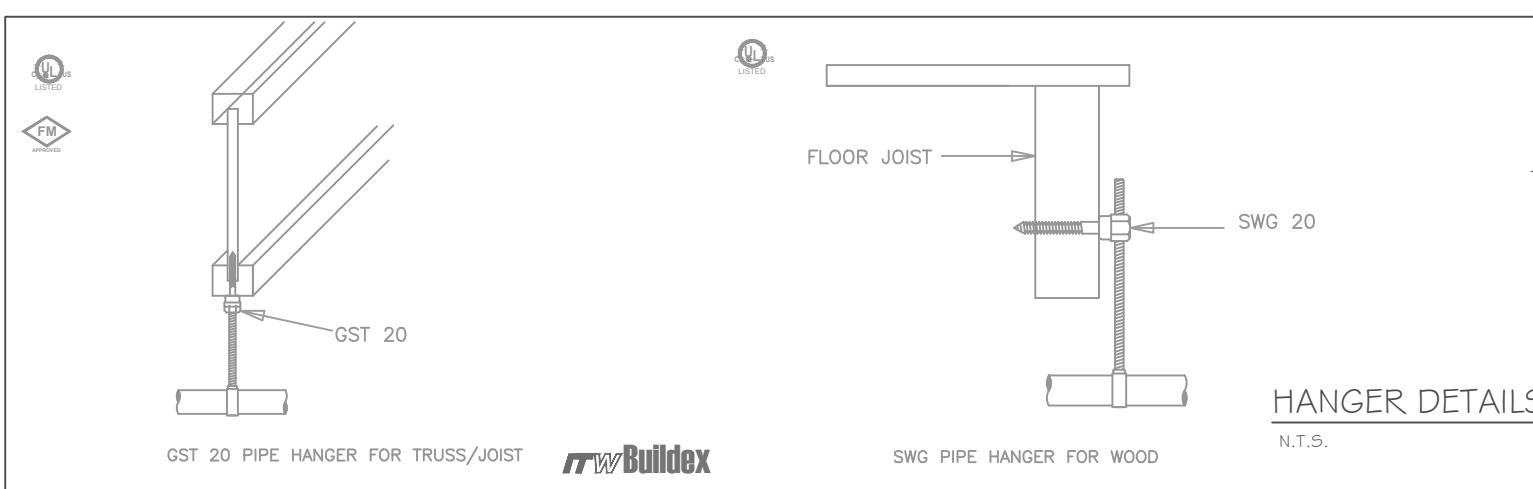
BY PORTLAND WATER DISTRICT

DATE 11/2/99

HYDRANT ELEV: 100.00' +/-

SUBMITTAL COPY

- Type of Hazard LIGHT/ORDINARY 2. Deflector Distance PER SPEC
- Pipe Type Used BLK SCH 10/40 CPVC 4. Sprinkler Area PER SPEC
- Type of Construction COMBUSTIBLE
- Maximum Spacing Allowed PER NFPA 13
- PIPE SIZING METHOD: PIPE SCHEDULE  HYDRAULICALLY CALCULATED
- ALL HANGERS AND LOCATIONS TO BE IN ACCORDANCE WITH N.F.P.A. PAMPHLET NO. 13
- HIGH DEGREE TEMPERATURE SPRINKLER HEADS TO BE INSTALLED IN ACCORDANCE WITH N.F.P.A. PAMPHLET NO. 13



HANGERS

AS SHOWN IN DETAIL

ABBREVIATIONS

B	Bottom of Beam
D	Bottom of Deck
P	Bottom of Pipe
HV	Head Valve
N & C	Nipple and Cap
NIC	Net in Contract
Net	Net to Scale
OB	Open Bar Joints
PRV	Pressure Red Valve
RM	Roof Membrane
SP	Standpipe
T2B	Top of Beam
TOP	Top of Floor
TOP	Top of Steel
UNK	Unless Otherwise Noted
CL	Centerline
NES	No Automatic Sprinklers
OTA	Open to Above

CONTRACT RESPONSIBILITIES

ITEM	FFC	OTHERS
STREET CORN		
LUDD MAN		
EXCAVATION		
FLUSHING		
WIRING		
PAINTING		
TAMPER SWITCHES		
FLOW SWITCHES		
STREET CORN		

SPRINKLER HEAD LEGEND

SYMBOL	MAKE	MODEL	SIN	FINISH	TYPE	TEMP	NPT	GRIFICE	K-FACTOR	TOTAL
○	RELIABLE	F1FR 56	RA1425	BRONZE	UPRIGHT	200° F	1/2"	1/2"	5.6	53
○	RELIABLE	F1FR 56	RA1414	WHITE	SEMI-REC PENDING	155° F	1/2"	1/2"	5.6	5
○	RELIABLE	F1RES 49	R3516	WHITE	SEMI-REC PENDING	155° F	1/2"	7/16"	4.9	32
○	RELIABLE	F1RES 44	R3531	WHITE	HORIZ SIDEWALL	155° F	1/2"	3/8"	4.4	14
○	RELIABLE	F3QR	R5734	WHITE	DRY SIDEWALL	155° F	1"	1/2"	5.6	1
○	ABOVE & BELOW HEAD 1 + HEAD 2									
○	HEAD 1 + SPRIG									
TOTAL 105										

SUBMITTALS

SENT TO	DATE SENT	DATE RECEIVED
I.S.O.	03/30/12	
F.M.		
L.M.		
I.R.I.		
L.A.		
STATE FIRE		
LOCAL FIRE		
LOCAL WATER		
OWNER		

LICENSE# 093 PERMIT # ????

R.M.S.# 093

P.O. BOX 1285  
 LEWISTON MAINE  
 04243-1285

135 CONGRESS STREET  
 135 CONGRESS STREET  
 PORTLAND, MAINE 04104

CONTRACT WITH BILL SIMPSON

SYSTEM TYPE	NO.	DATE	DESCRIPTION
WET			
DRY			
DELUGE			
PREACTION			
ME. LIFE			
HYDRO-PRO			

AS NOTED

DRAWN BY RDO

CHECKED BY SEG

DATE 10/14/2013

TOTAL SPKRS ON JOB 105

SHEET# 1 of 3

JOB# 13077



