

© 2013 RYAN SENATORE ARCHITECTURE

RENOVATIONS TO
135 CONGRESS STREET
PORTLAND, MAINE

RSA
RYAN SENATORE
ARCHITECTURE
565 CONGRESS STREET, STE. 304
PORTLAND, MAINE 04101
207-650-6414
senatorearchitecture.com

CONSULTANTS:
STRUCTURAL: Structural Integrity
77 Oak Street
Portland, ME 04101
207-774-4614

REVISIONS:
REVISION #1 - 10/22/13

DATE: SEPTEMBER 12, 2013

PROJECT No.

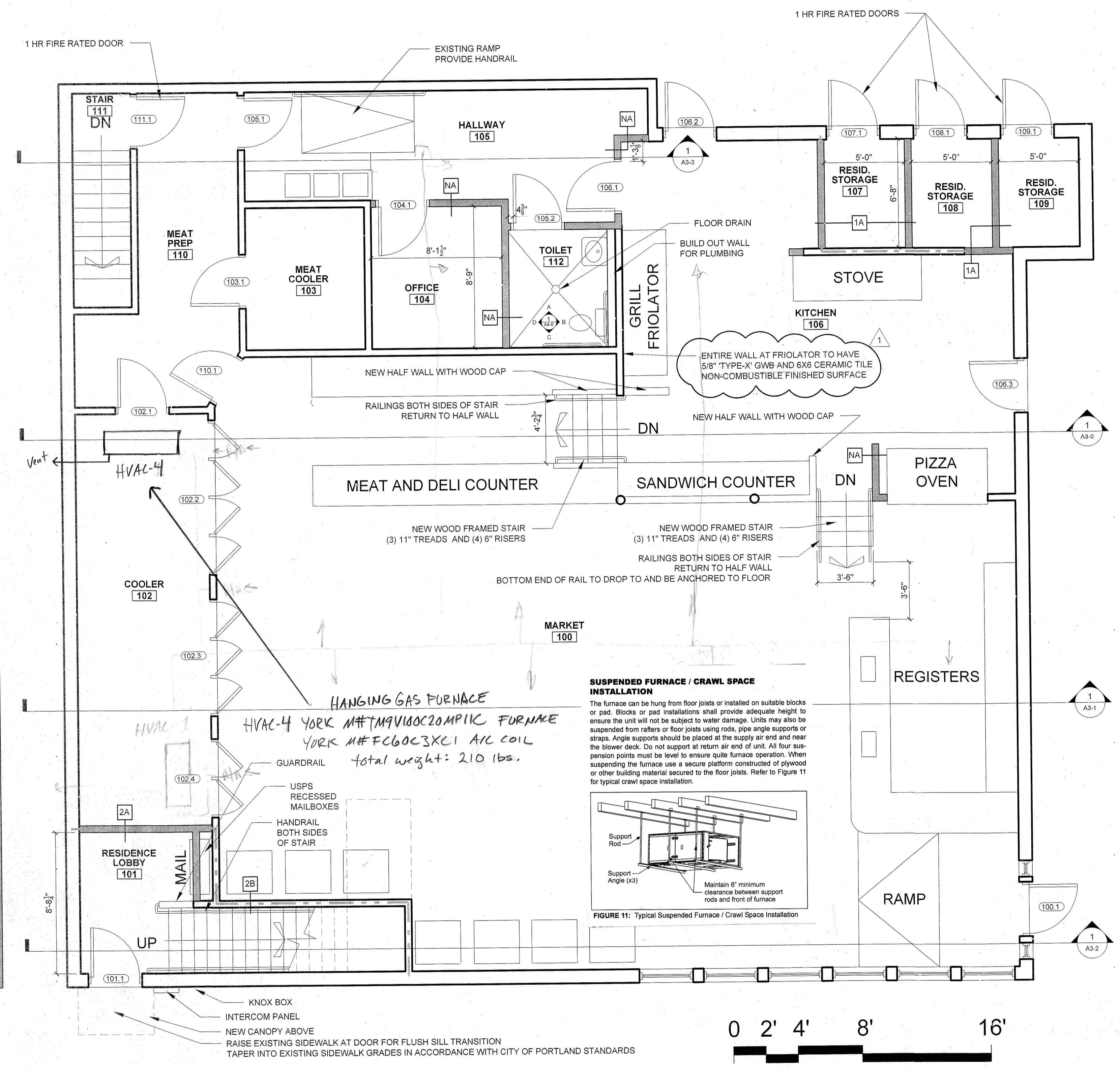
DRAWN BY: RJS / RRT

CHECKED BY: RJS

SCALE: AS NOTED

SHEET TITLE:
FIRST FLOOR PLAN

A1-1



SUSPENDED FURNACE / CRAWL SPACE INSTALLATION
The furnace can be hung from floor joists or installed on suitable blocks or pad. Blocks or pad installations shall provide adequate height to ensure the unit will not be subject to water damage. Units may also be suspended from rafters or floor joists using rods, pipe angle supports or straps. Angle supports should be placed at the supply air end and near the blower deck. Do not support at return air end of unit. All four suspension points must be level to ensure quiet furnace operation. When suspending the furnace use a secure platform constructed of plywood or other building material secured to the floor joists. Refer to Figure 11 for typical crawl space installation.

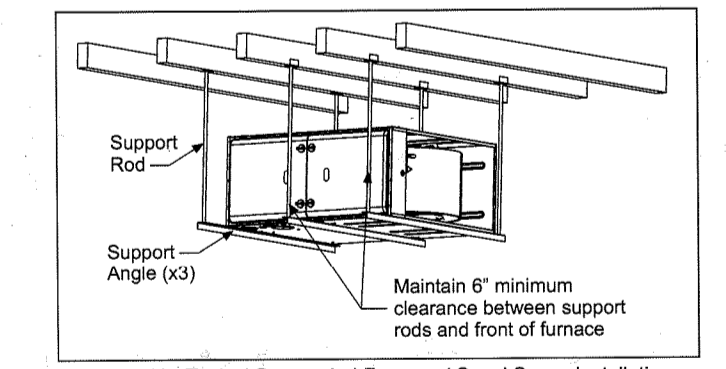


FIGURE 11: Typical Suspended Furnace / Crawl Space Installation

1 FIRST FLOOR PLAN
1/4"=1'-0"

CONGRESS STREET

GRAPHIC SCALE

