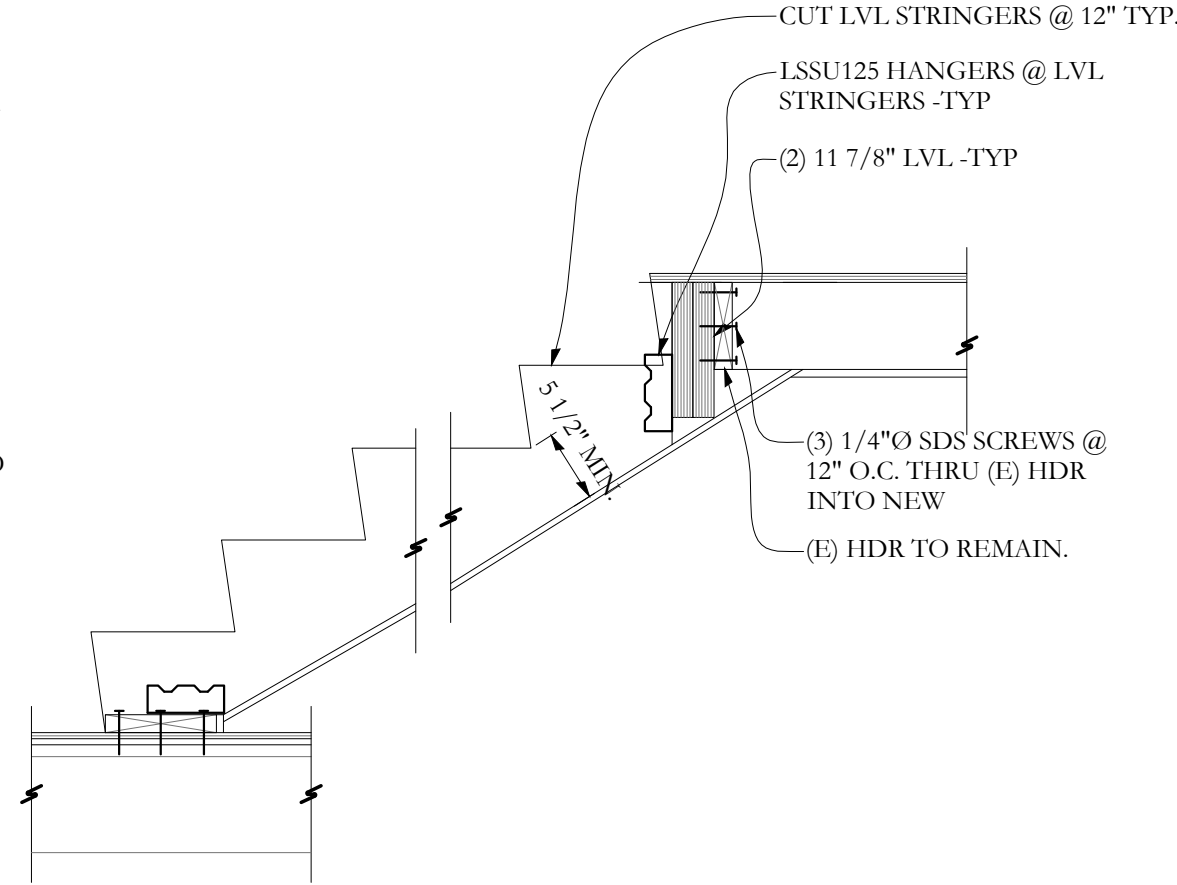
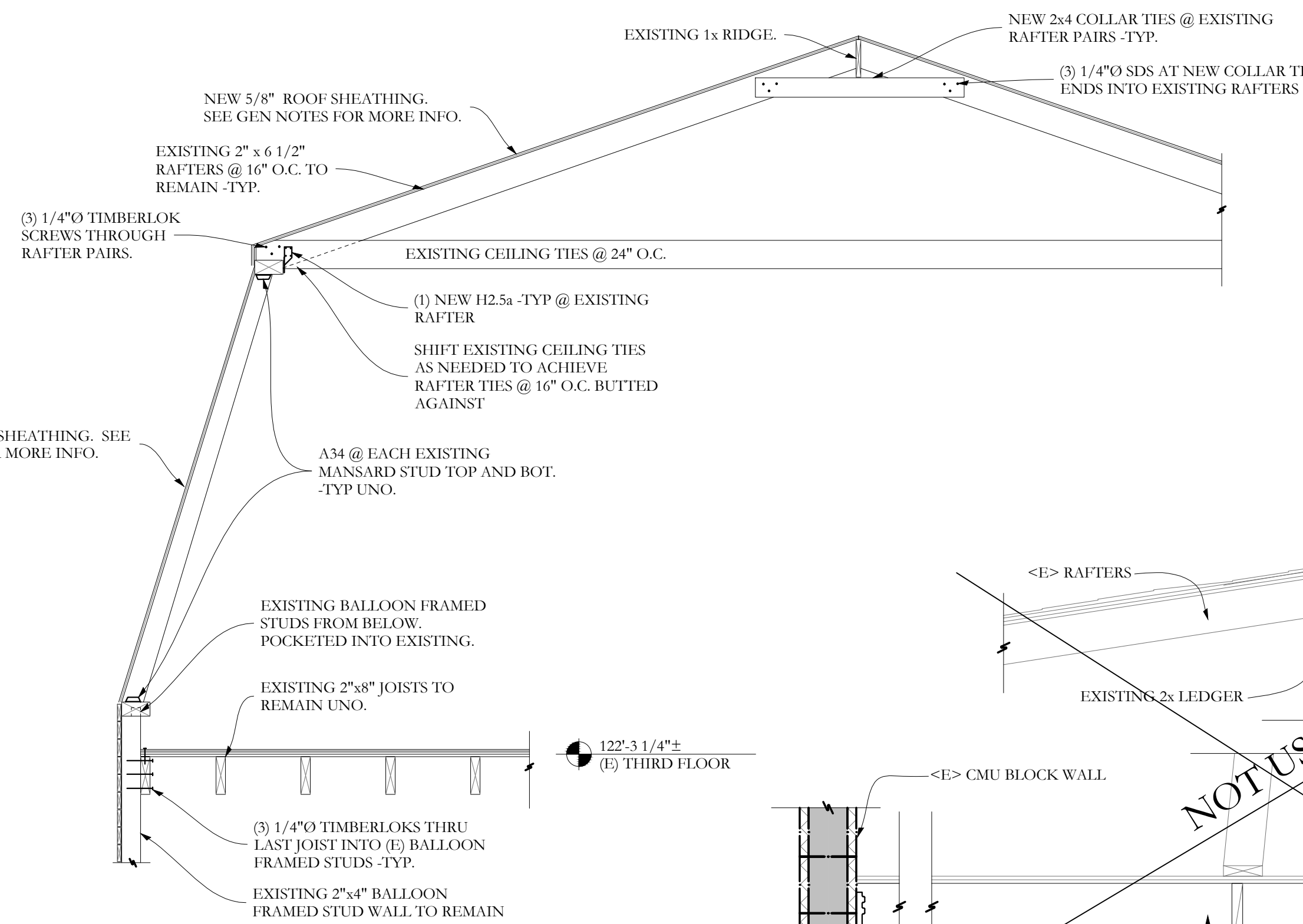


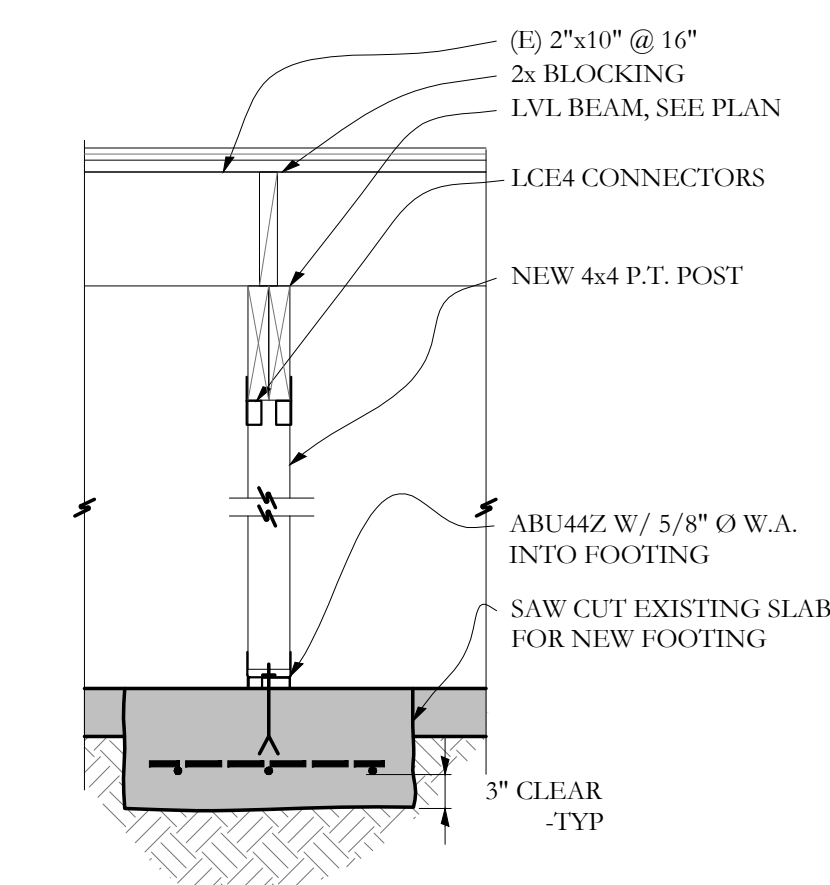
SECTION 1/S2.1 3/4"=1'-0"



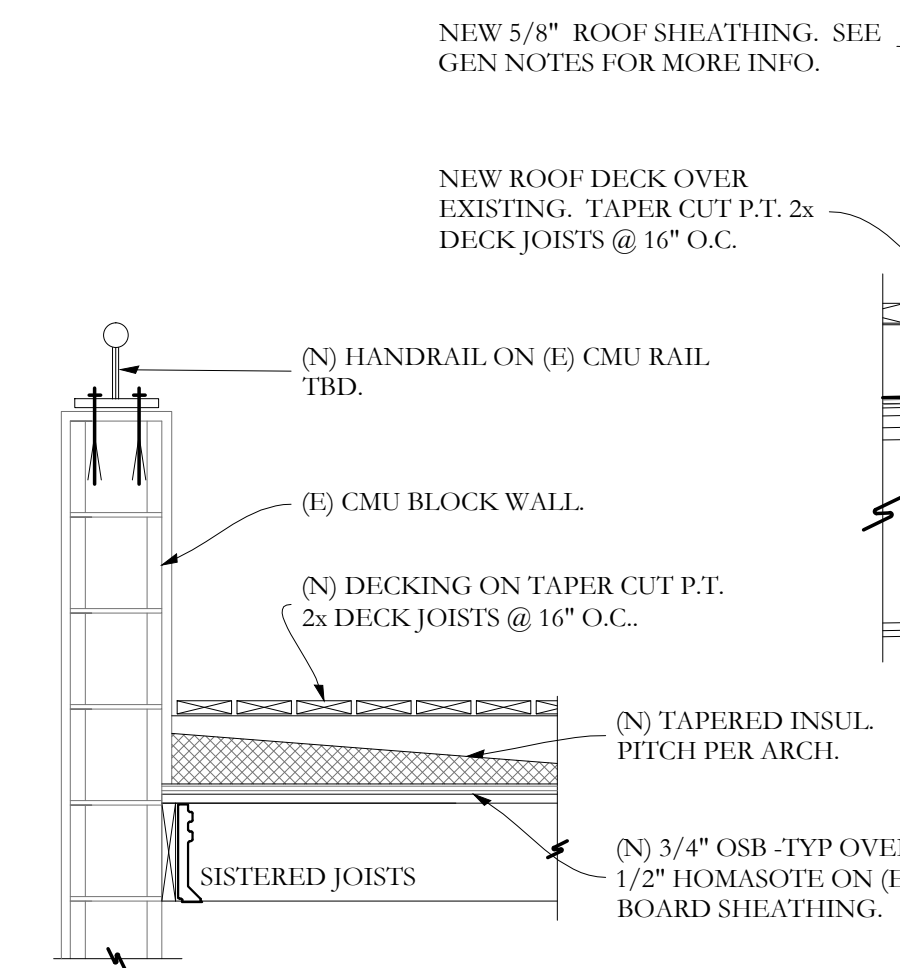
SECTION M/S2.1 3/4"=1'-0"



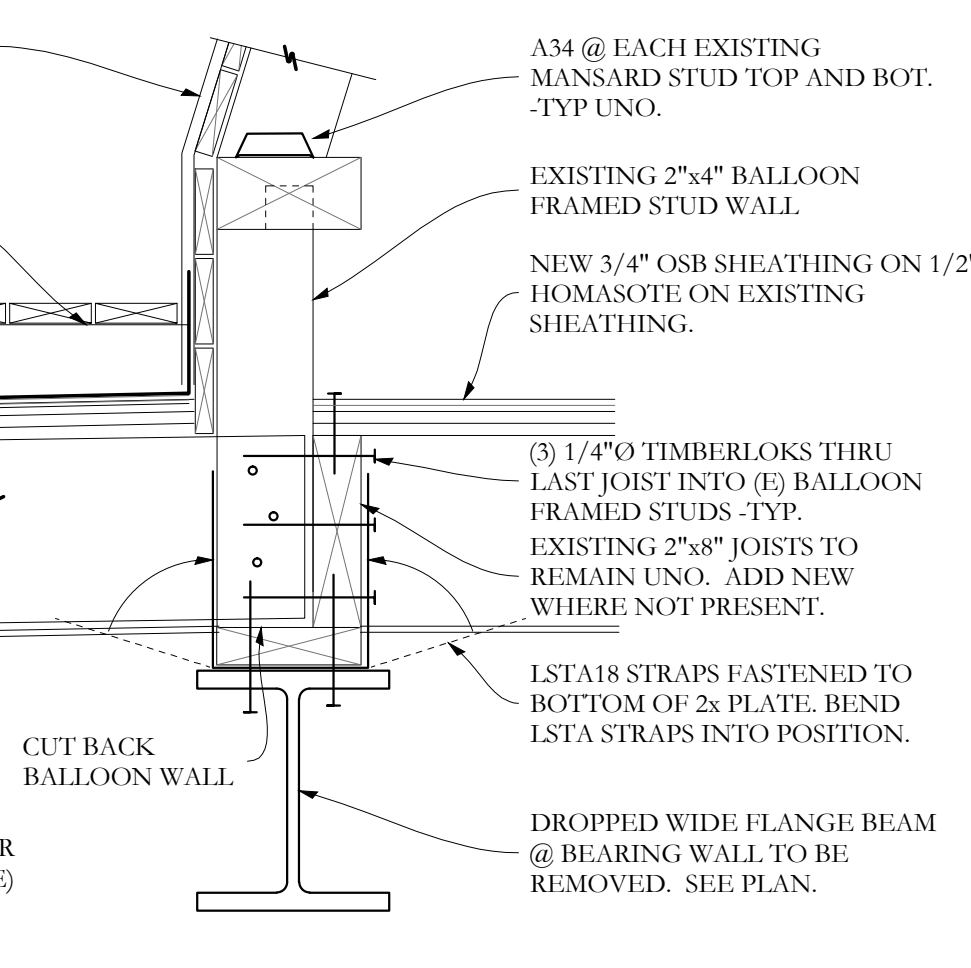
SECTION H/S2.1 1/2"=1'-0"



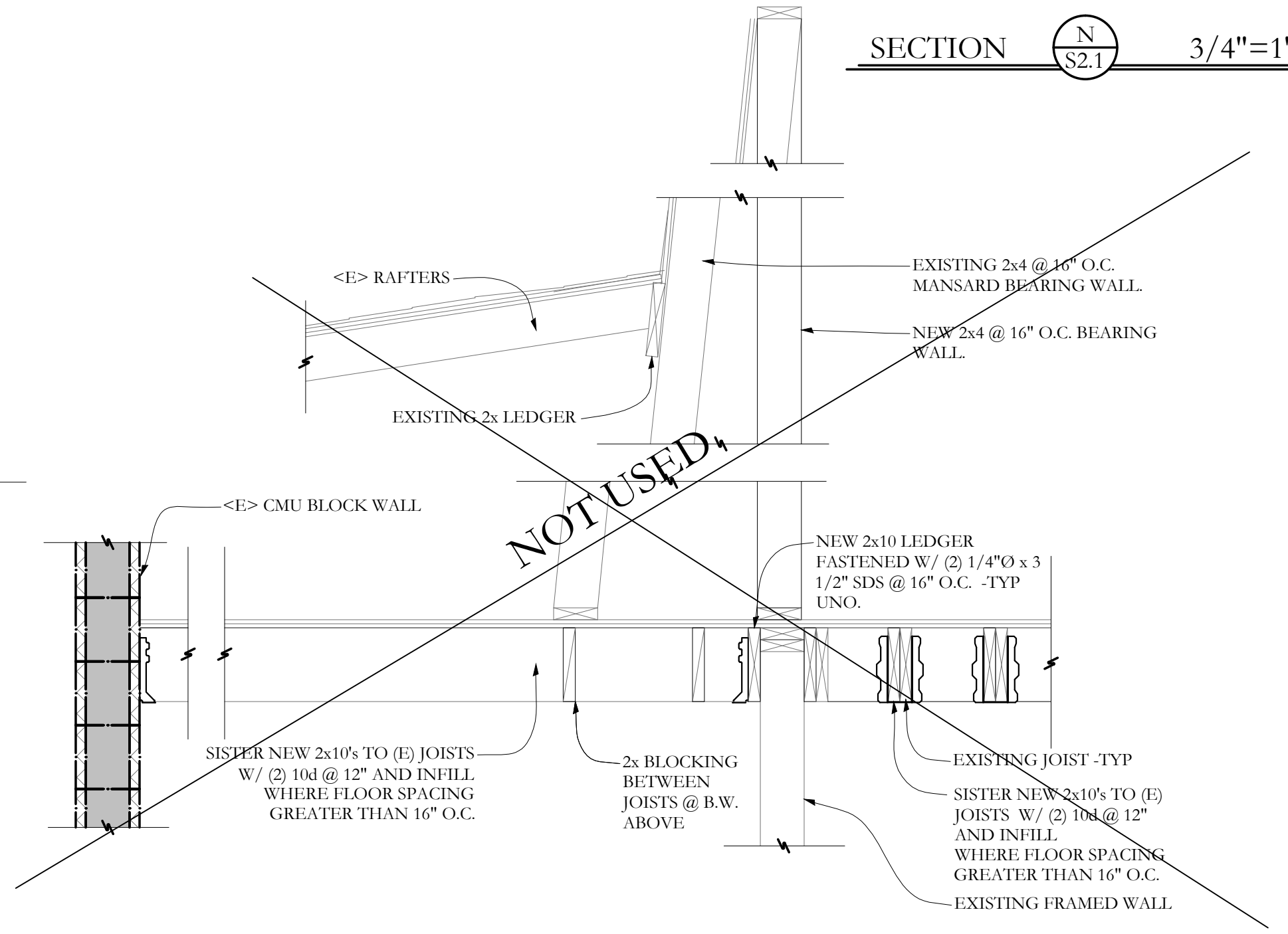
SECTION N/S2.1 3/4"=1'-0"



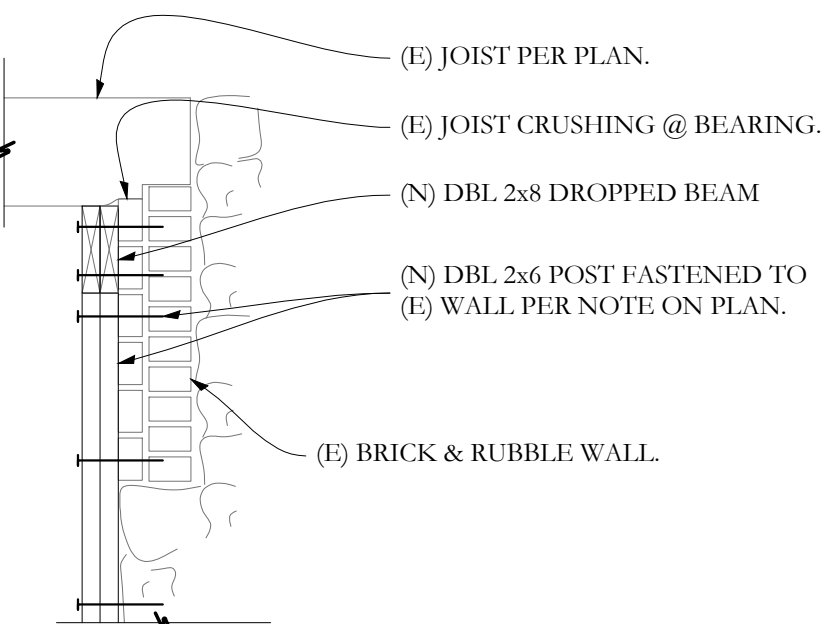
SECTION F/S2.1 3/4"=1'-0"



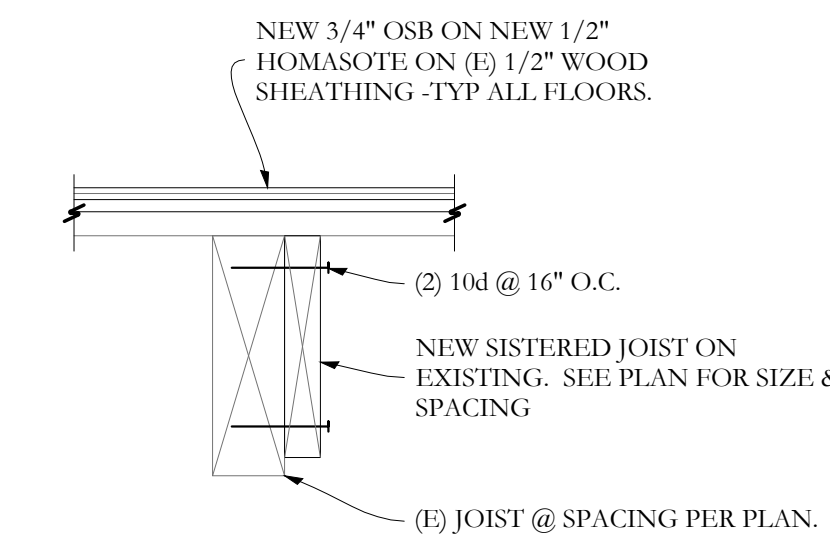
SECTION G/S2.1 1 1/2"=1'-0"



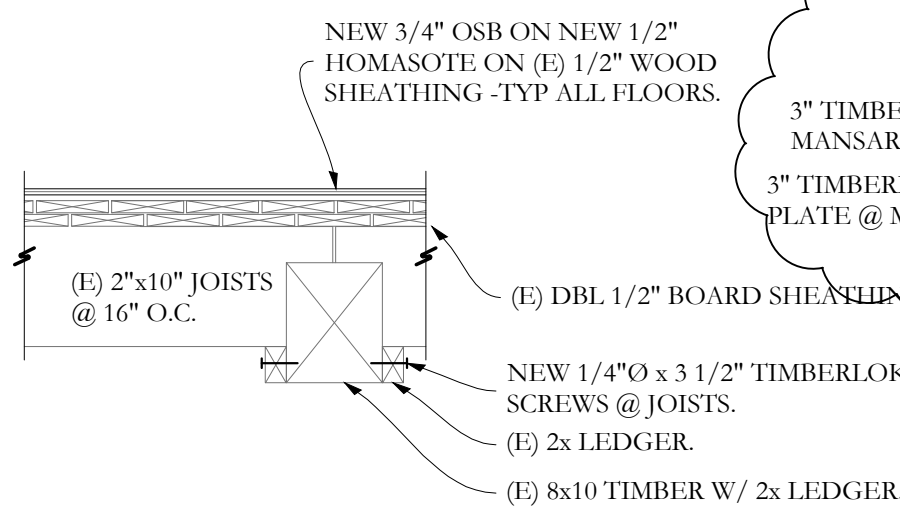
SECTION I/S2.1 3/4"=1'-0"



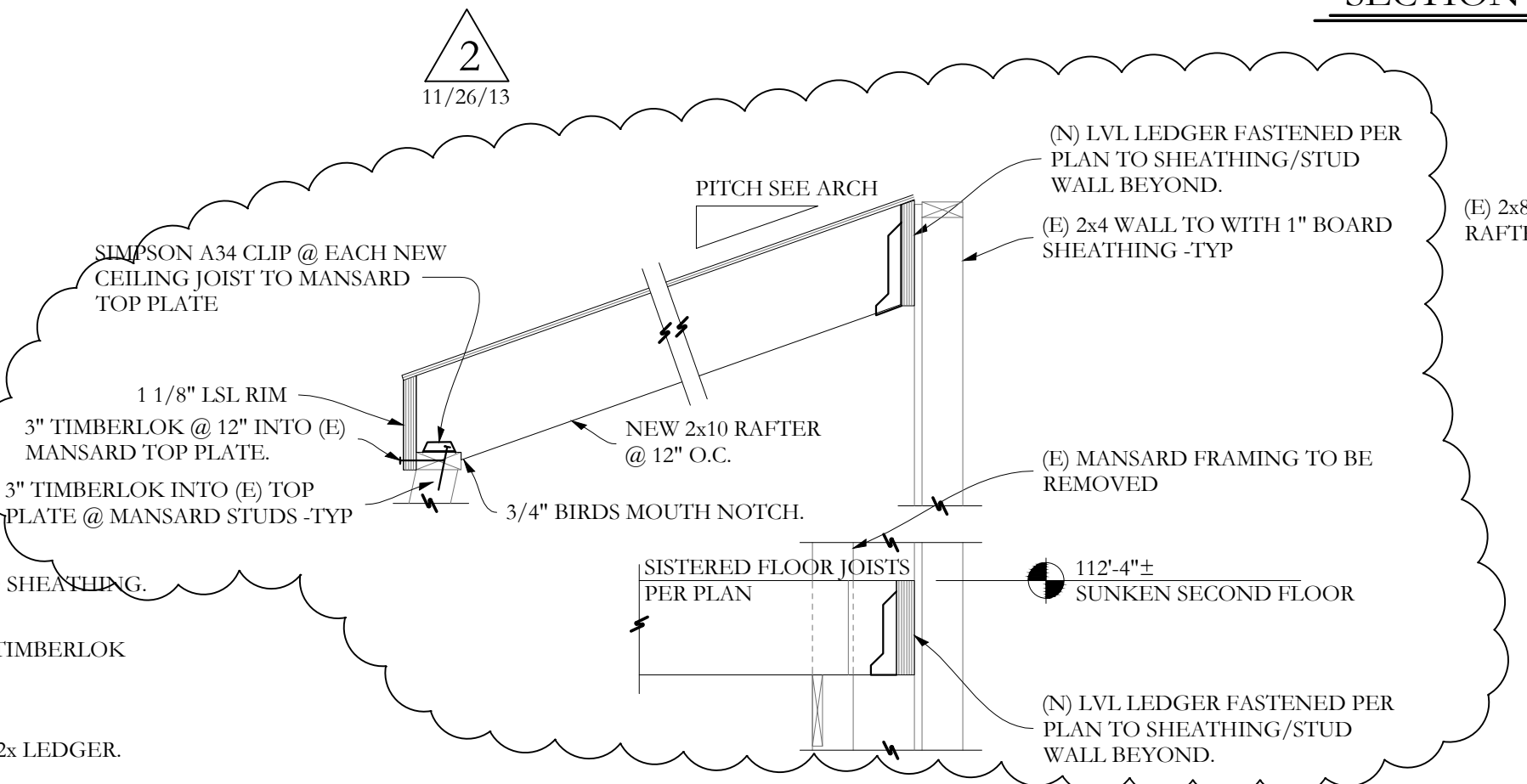
SECTION A/S2.1 3/4"=1'-0"



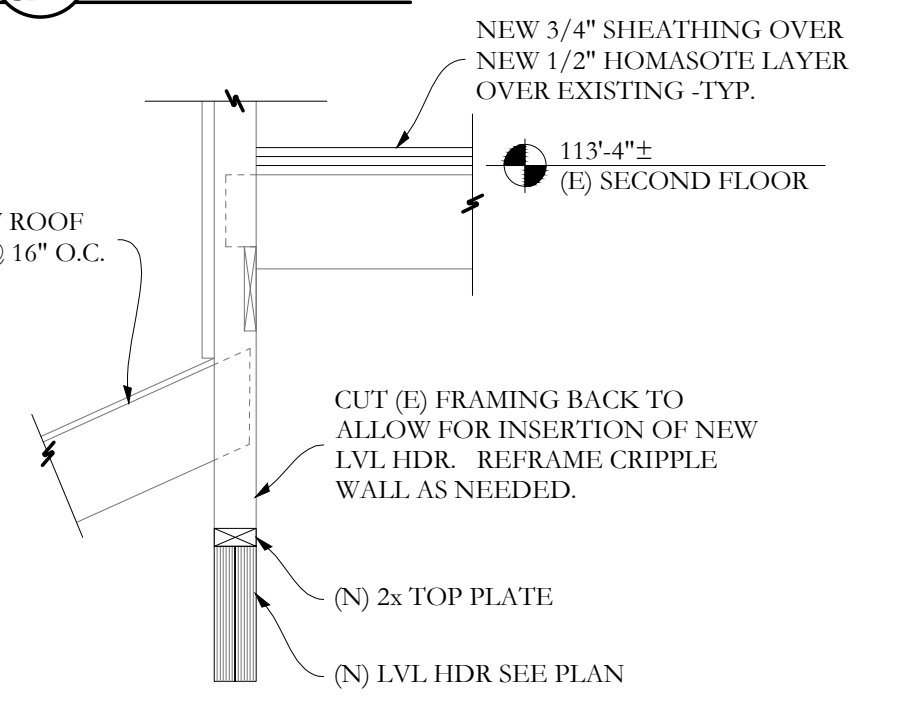
SECTION B/S2.1 1 1/2"=1'-0"



SECTION C/S2.1 1 1/2"=1'-0"



SECTION D/S2.1 3/4"=1'-0"



SECTION E/S2.1 3/4"=1'-0"

2
11/26/13

Structural Integrity
 Consulting Engineers, Inc.
 77 Oak Street
 Portland, ME, 04101
 p. 207-774-4614
 f. 866-793-7835
 www.structuralintegrity.com
 BUILD WITH CONFIDENCE
 © 2012 Structural Integrity Consulting Engineers, Inc.

1/4" =
 S13-0107
 JULY 2nd 2013

RENOVATIONS TO
 135 CONGRESS STREET
 PORTLAND, MAINE

RSA
 RYAN SENATORE
 ARCHITECTURE
 565 CONGRESS STREET, STE. 304
 PORTLAND, MAINE 04101
 207-650-6414
 senatorearchitecture.com

CONSULTANTS:
 STRUCTURAL:
 Structural Integrity
 77 Oak Street
 Portland, ME 04101
 207-774-4614
 STATE OF MAINE
 AARON C. JONES
 No. 10958
 LICENSED PROFESSIONAL ENGINEER
 EXPIRES 12/31/2017

REVISIONS:
 REV. 1: 10-18-13
 DATE: 12 SEPTEMBER 2013
 PROJECT No.
 DRAWN BY: MKL
 CHECKED BY: ACJ
 SCALE: AS NOTED
 SHEET TITLE:
 SECTIONS

S2-1