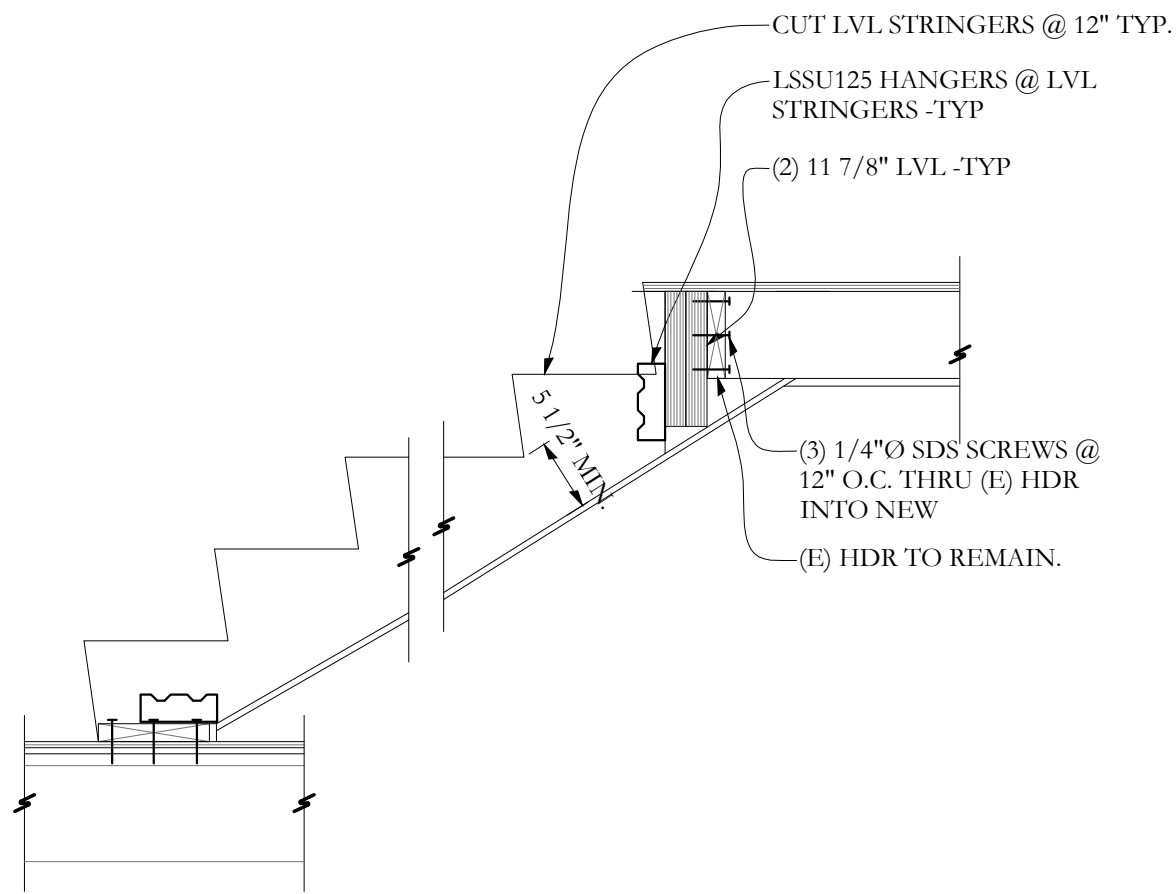
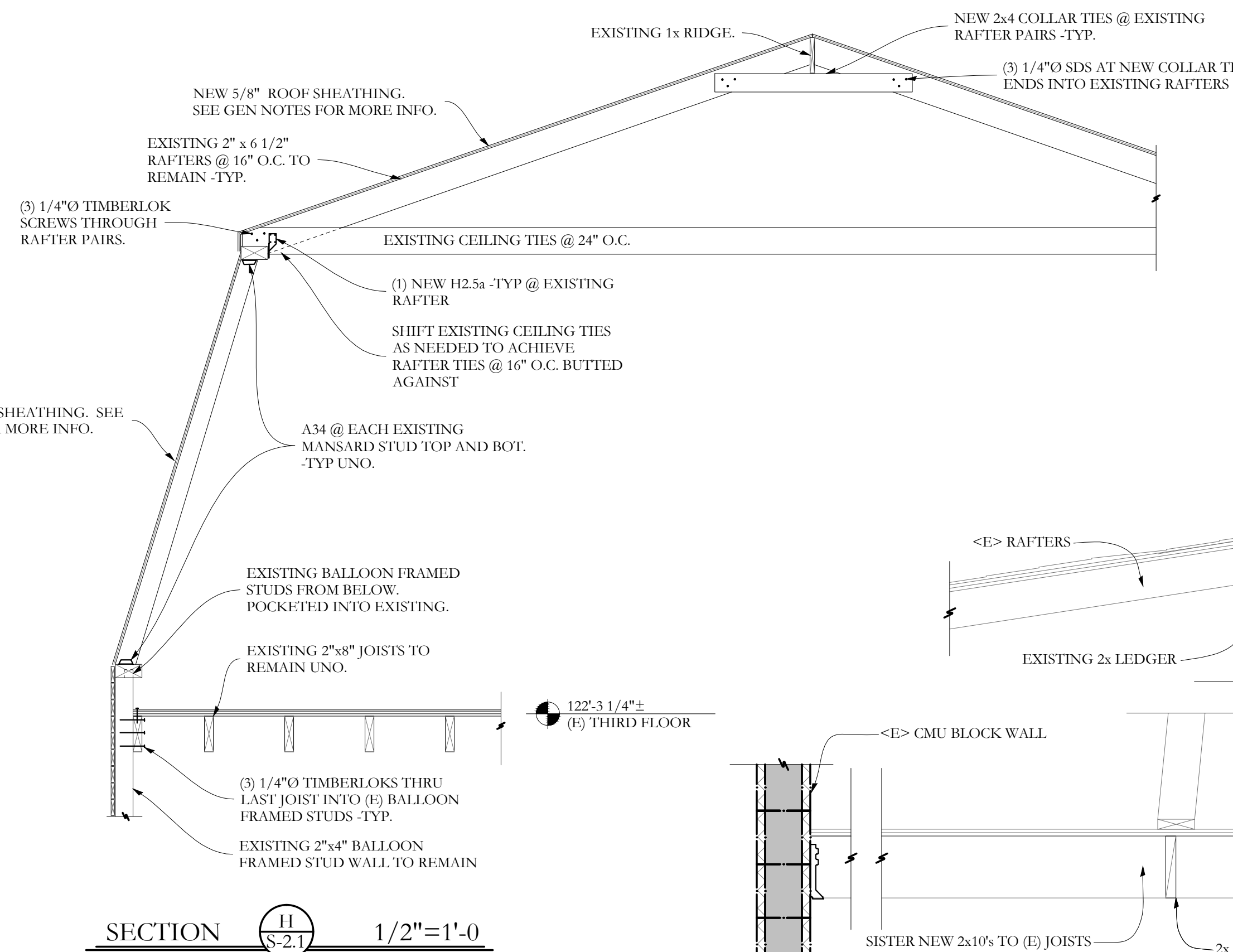


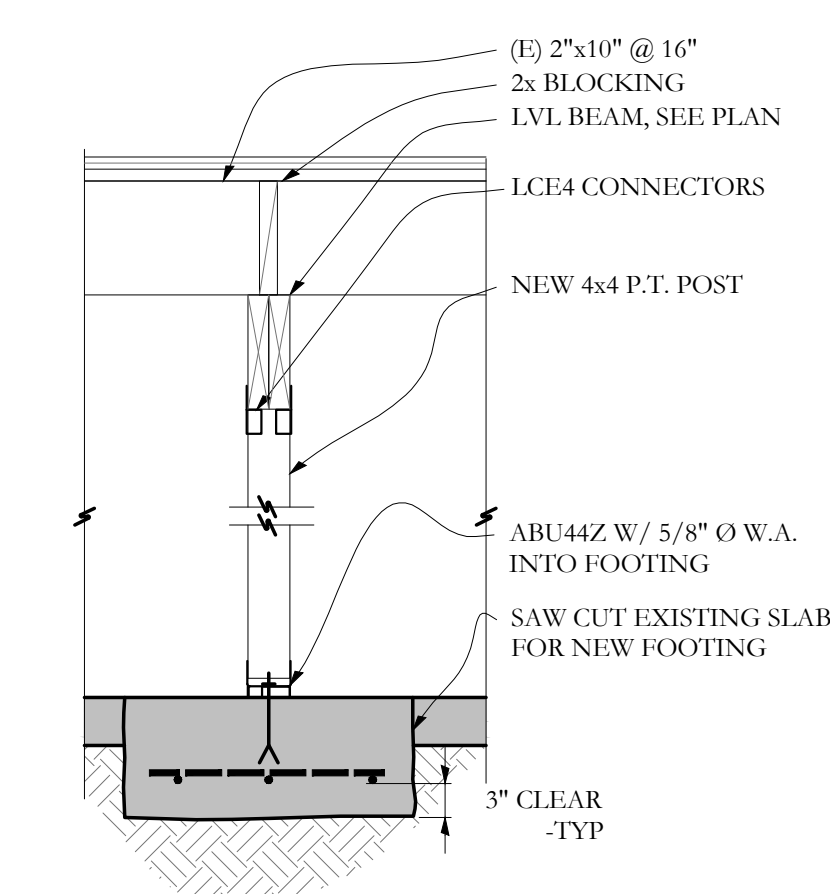
SECTION 1/S2.1 3/4"=1'-0"



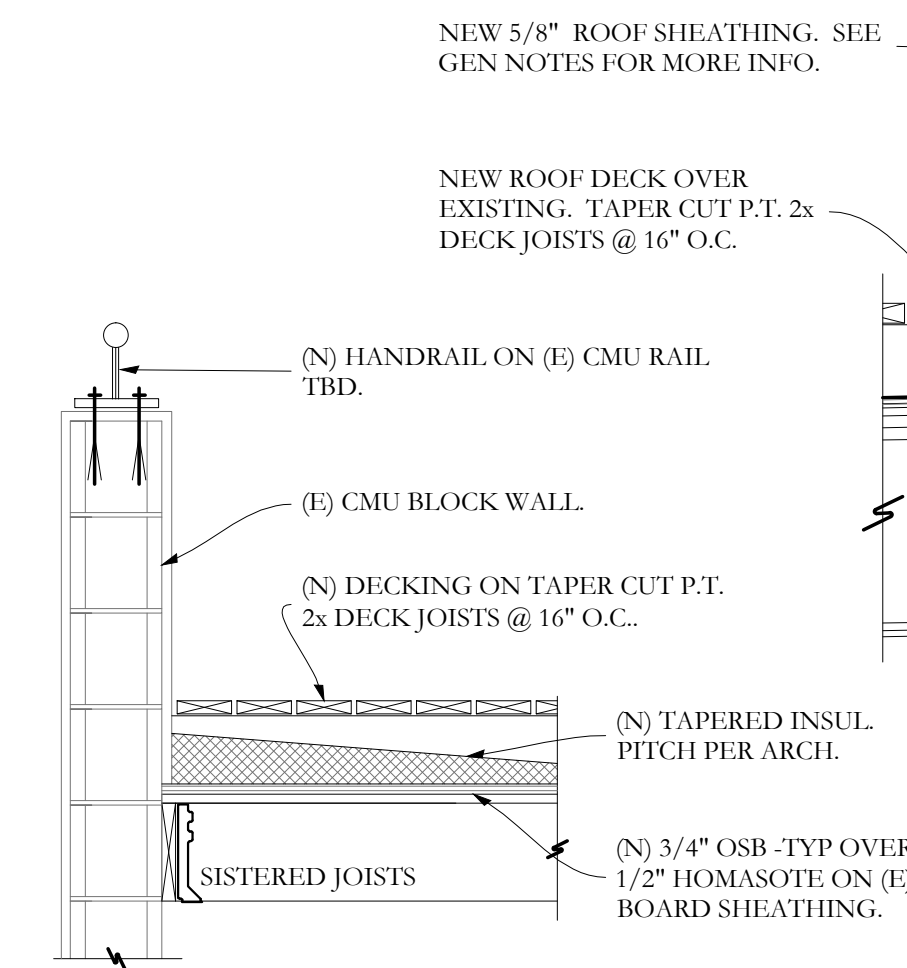
SECTION M/S2.1 3/4"=1'-0"



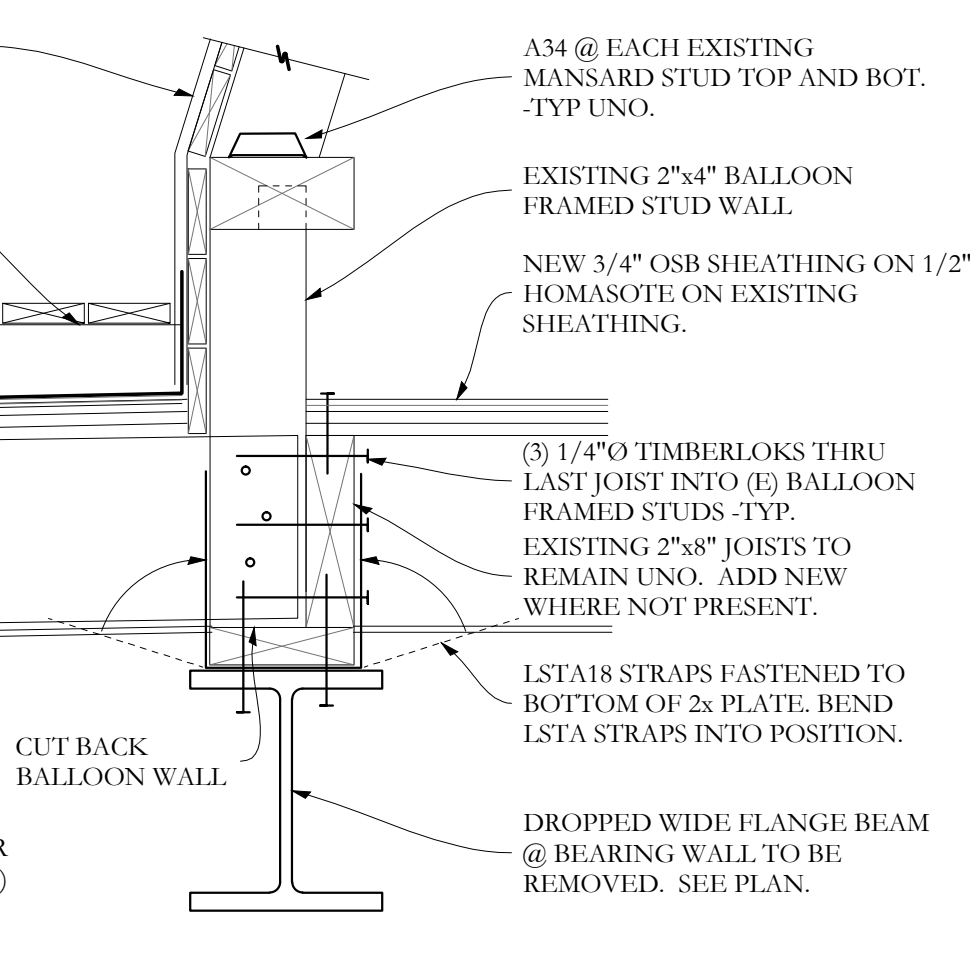
SECTION H/S2.1 1/2"=1'-0"



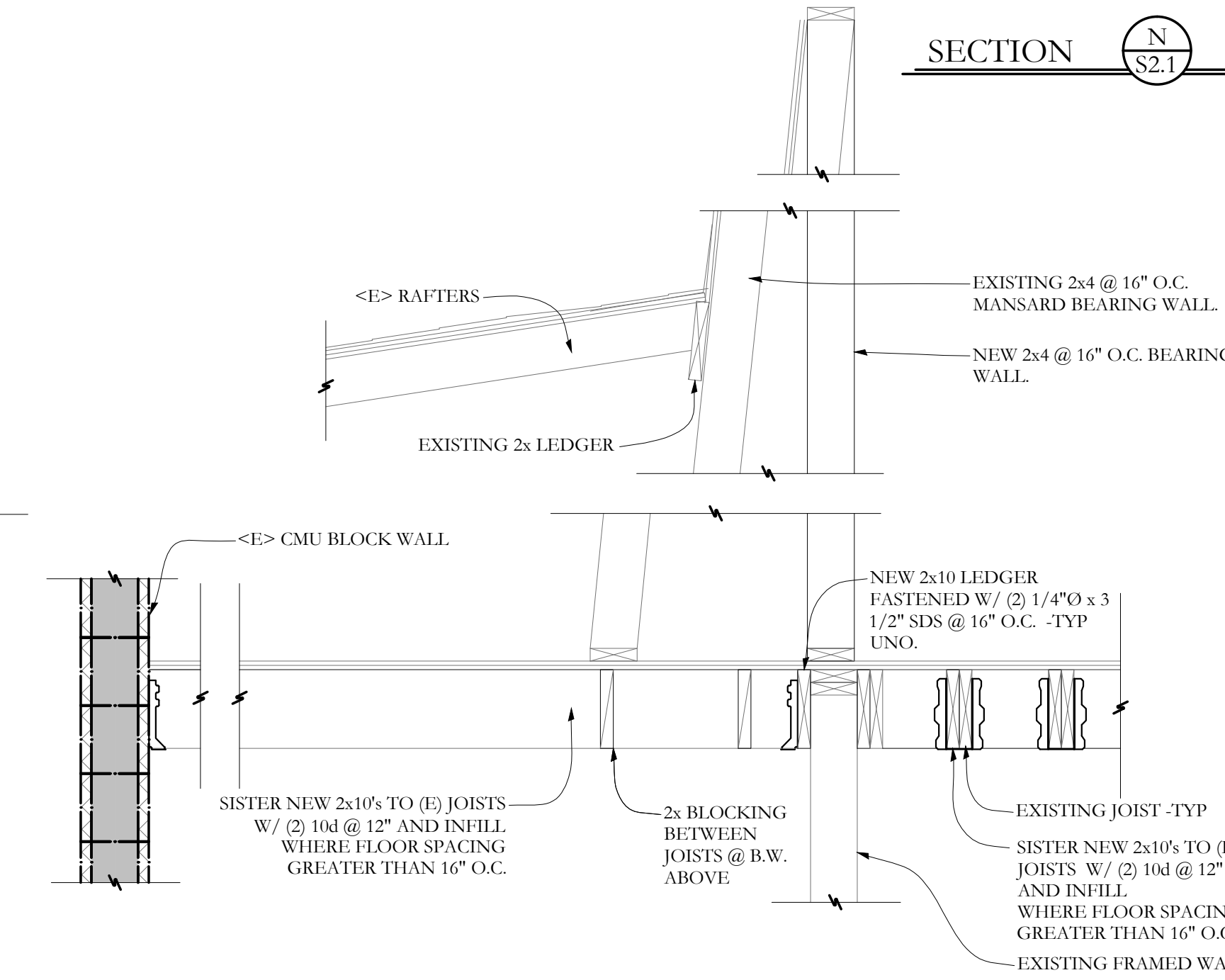
SECTION N/S2.1 3/4"=1'-0"



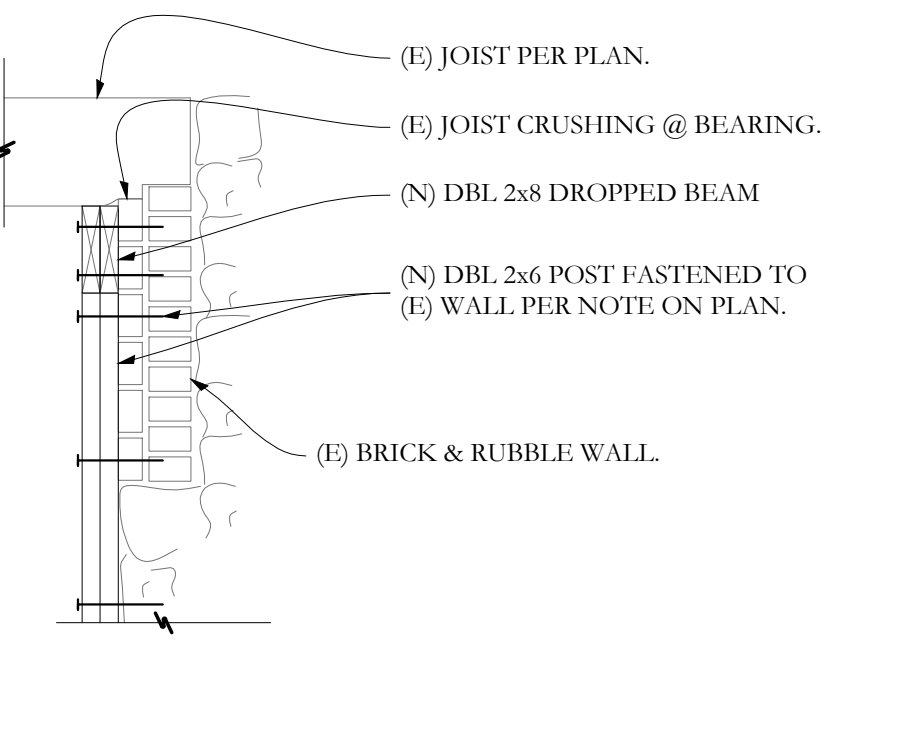
SECTION F/S2.1 3/4"=1'-0"



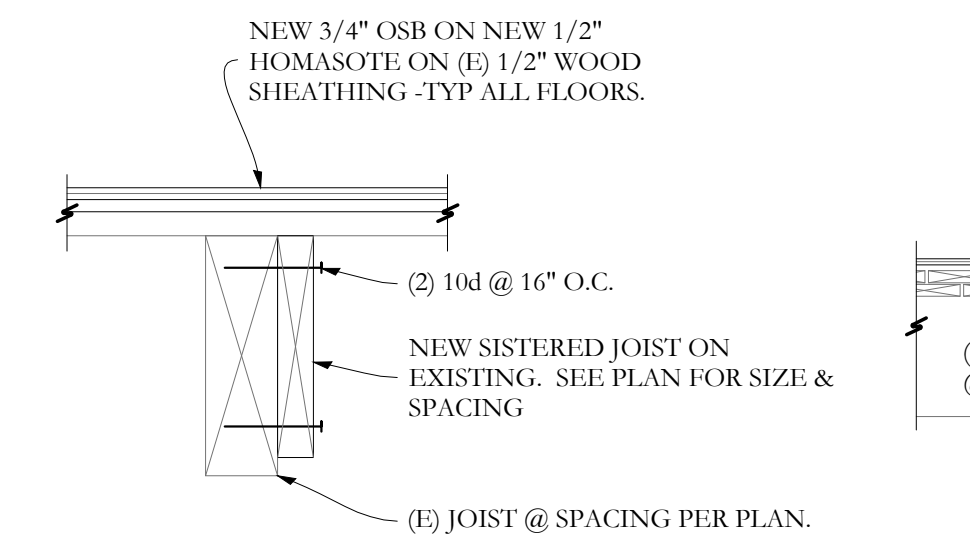
SECTION G/S2.1 1 1/2"=1'-0"



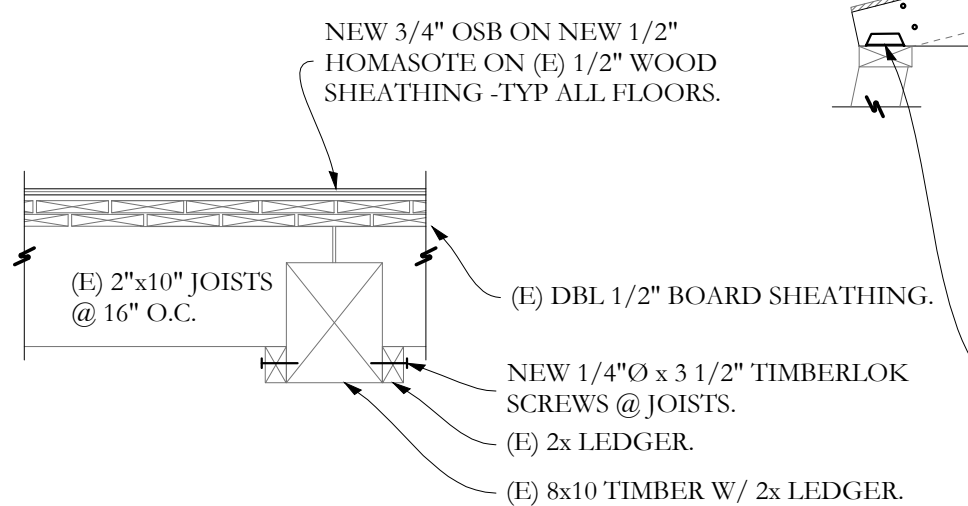
SECTION I/S2.1 3/4"=1'-0"



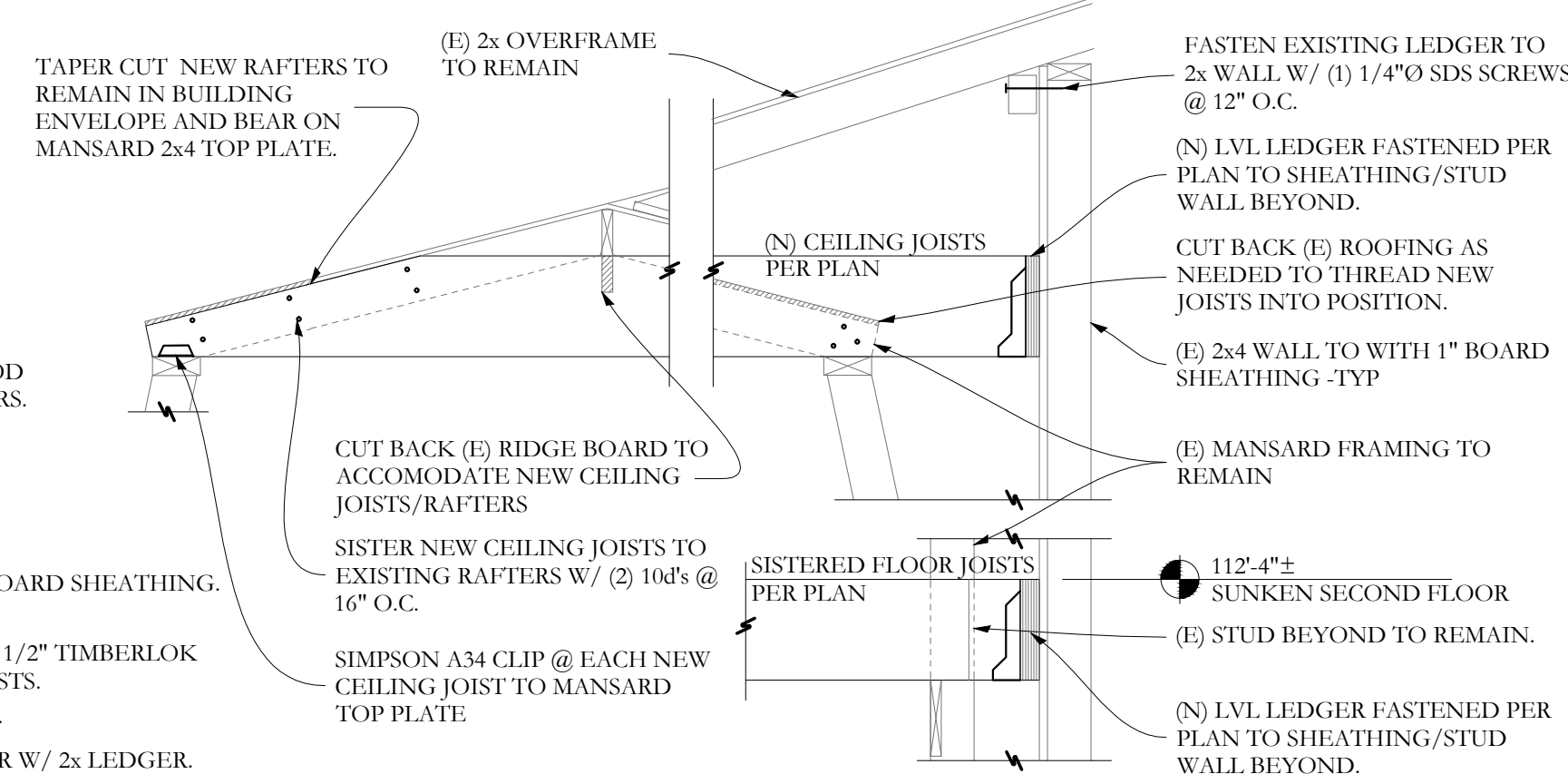
SECTION A/S2.1 3/4"=1'-0"



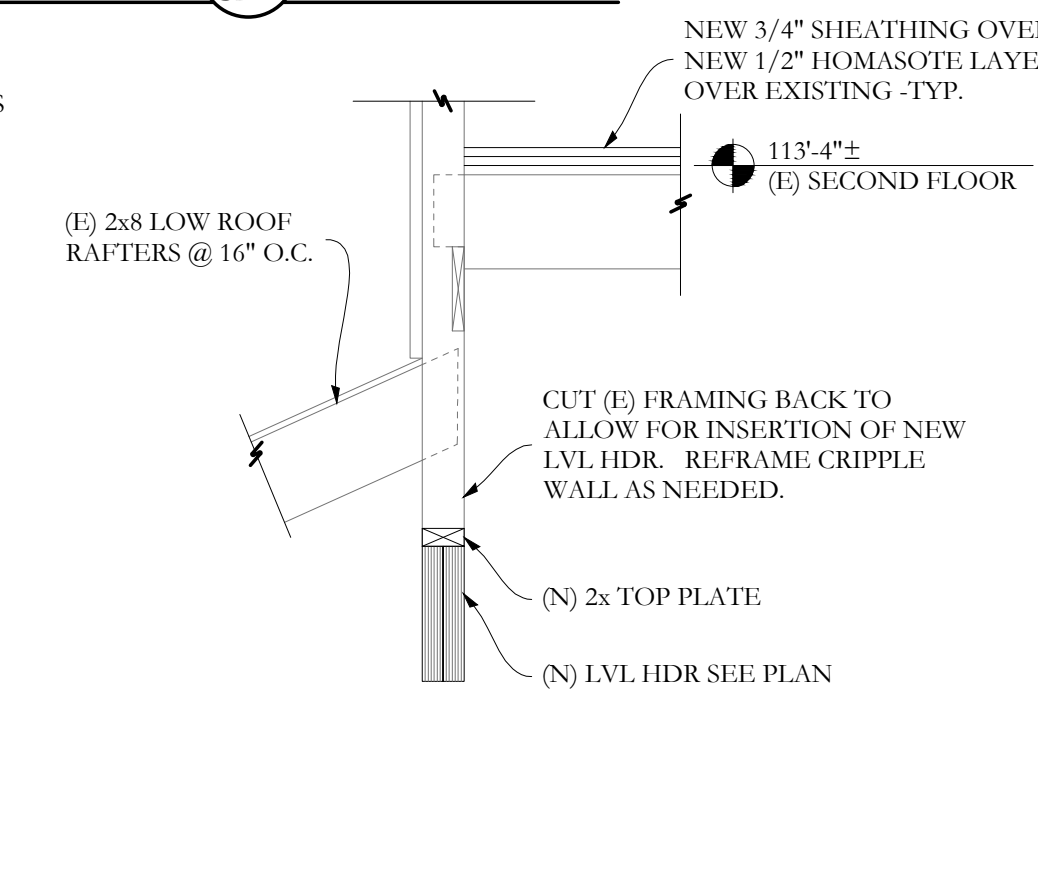
SECTION B/S2.1 1 1/2"=1'-0"



SECTION C/S2.1 1 1/2"=1'-0"



SECTION D/S2.1 3/4"=1'-0"



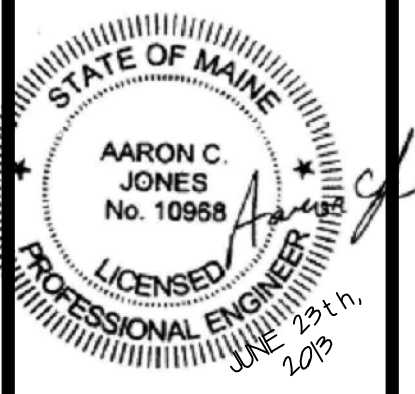
SECTION E/S2.1 3/4"=1'-0"

© 2013 RYAN SENATORE ARCHITECTURE

RENOVATIONS TO
135 CONGRESS STREET
PORTLAND, MAINE

RSA
RYAN SENATORE ARCHITECTURE
565 CONGRESS STREET, STE. 304
PORTLAND, MAINE 04101
207-650-6414
senatorearchitecture.com

CONSULTANTS:
STRUCTURAL:
Structural Integrity
77 Oak Street
Portland, ME 04101
207-774-4614



REVISIONS:

DATE: 23 AUGUST 2013

PROJECT No.

DRAWN BY: RJS / RRC

CHECKED BY: ARJS

SCALE: AS NOTED

SHEET TITLE:
SECTIONS

Structural Integrity
Consulting Engineers, Inc.
77 Oak Street
Portland, ME, 04101
p. 207-774-4614
f. 866-793-7835
www.structuralintegrity.com

S2-1

ST
1/4"=
JULY 2nd 2013

BUILD WITH CONFIDENCE
© 2012 Structural Integrity Consulting Engineers, Inc.