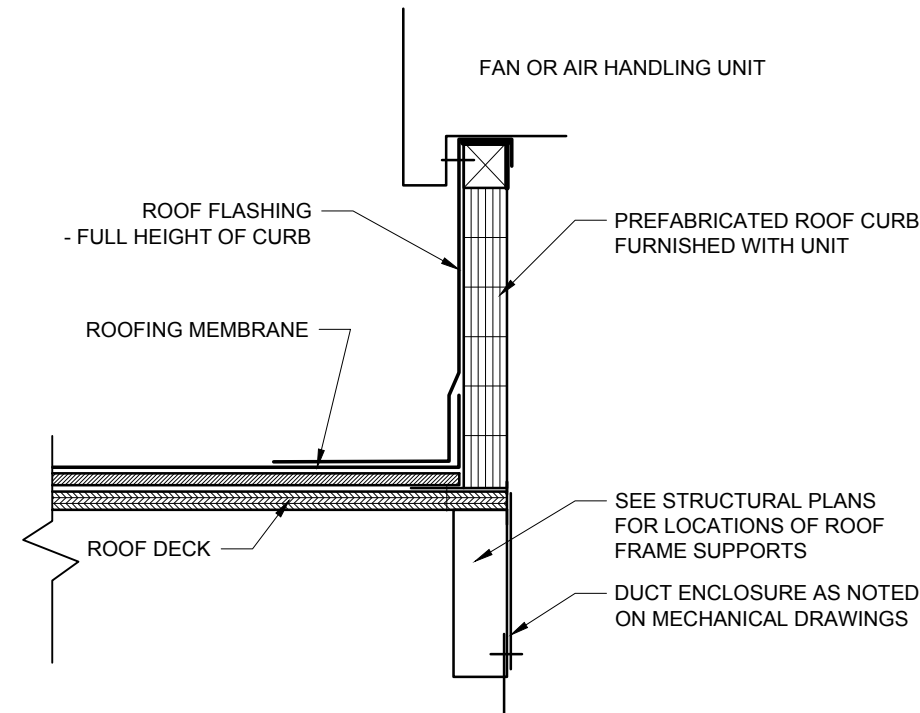
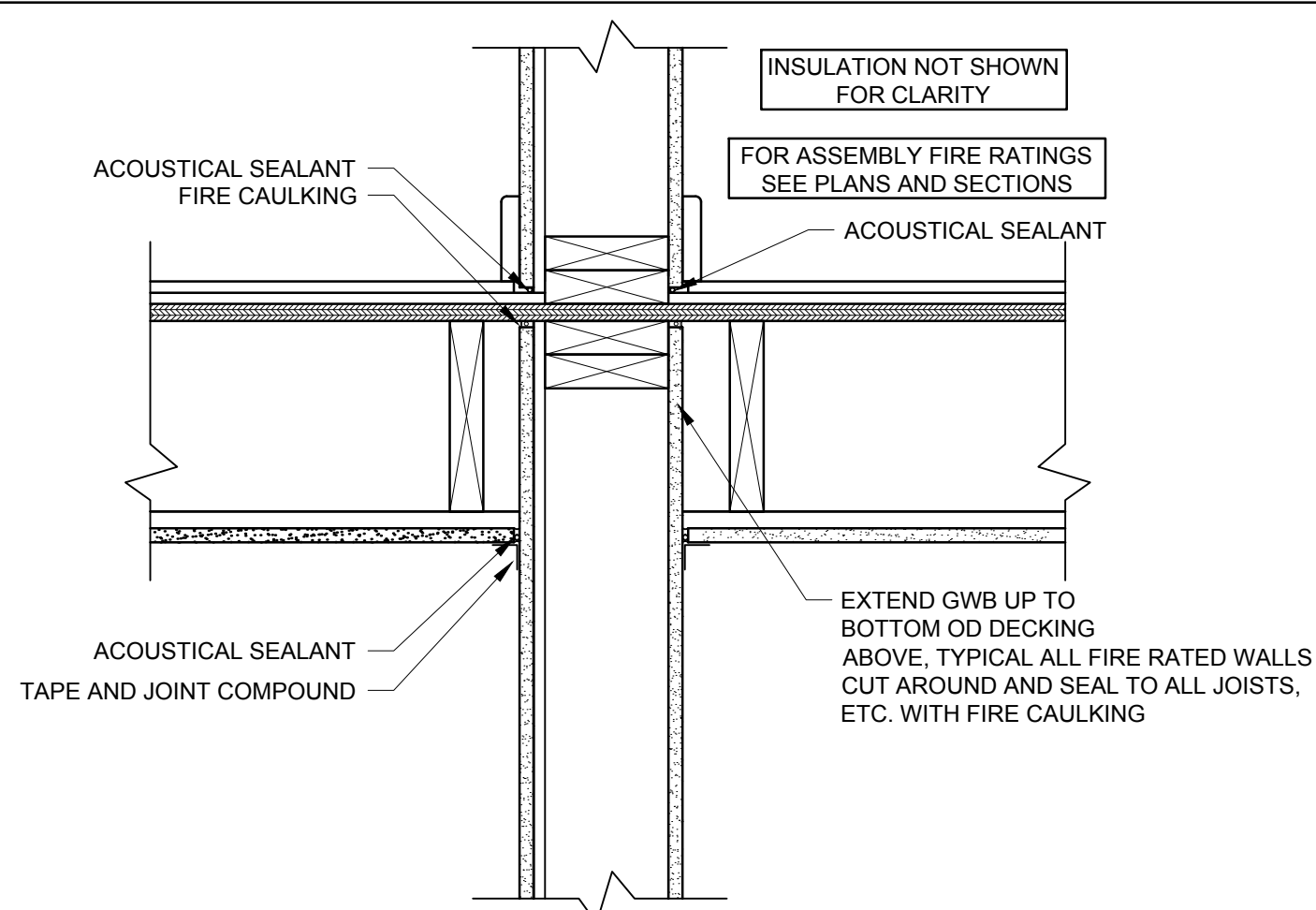


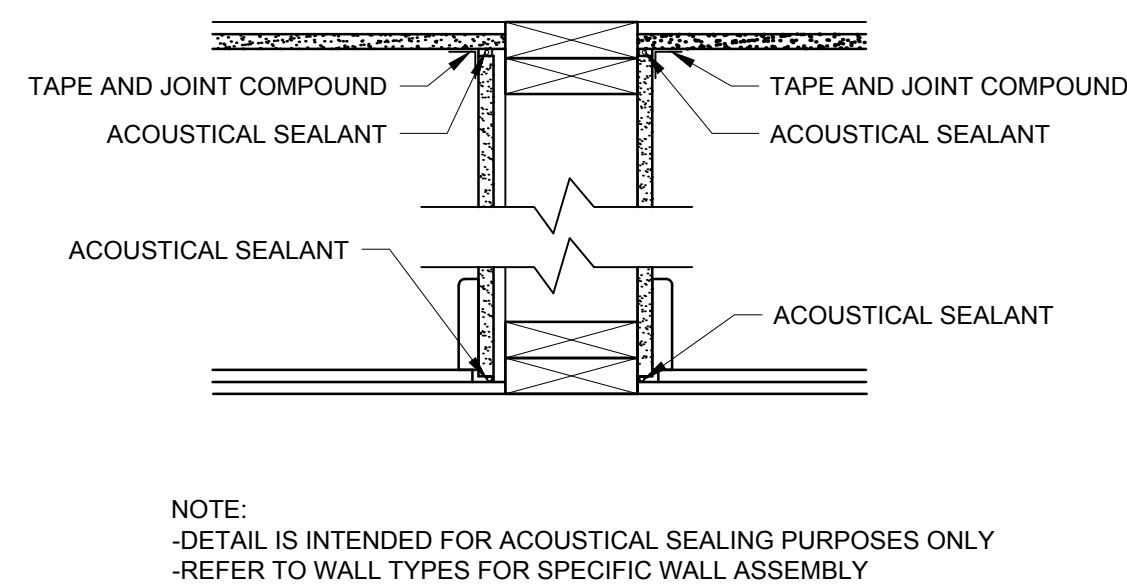
10 TYPICAL VENT STACK DETAIL AT FLAT ROOF  
1-1/2" = 1'-0"



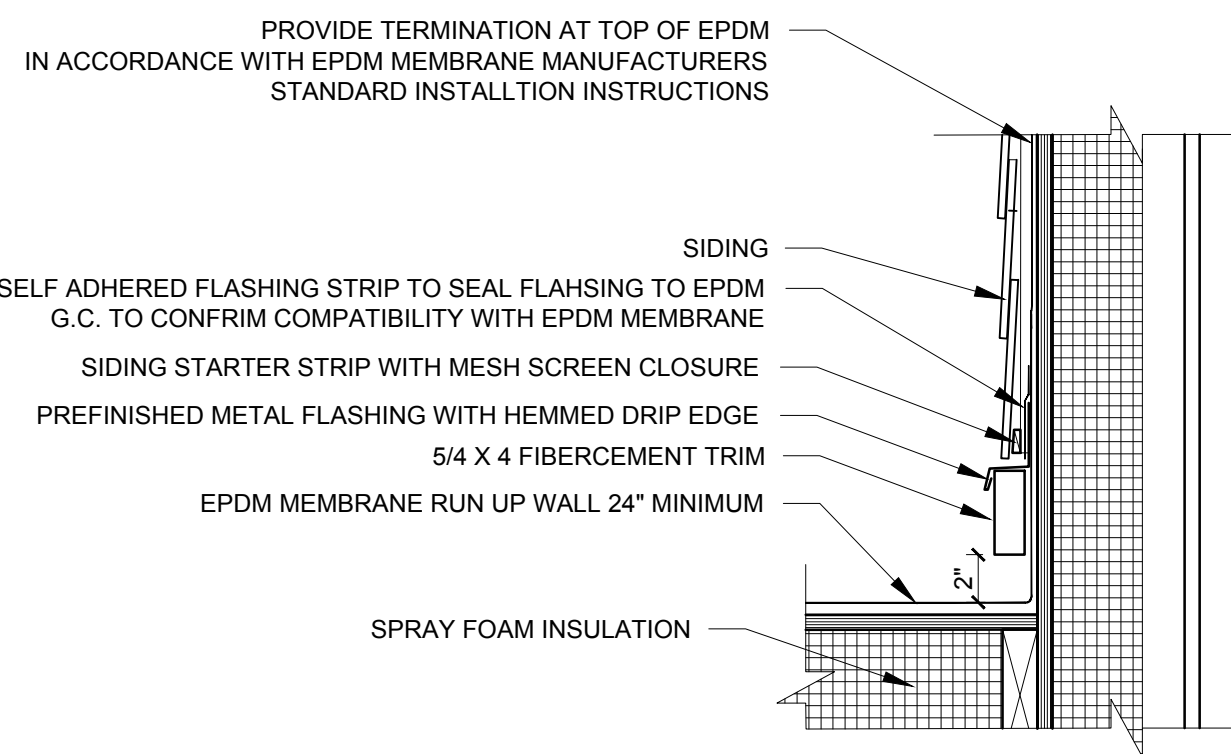
9 TYPICAL ROOF CURB DETAIL AT MECHANICAL UNIT  
1-1/2" = 1'-0"



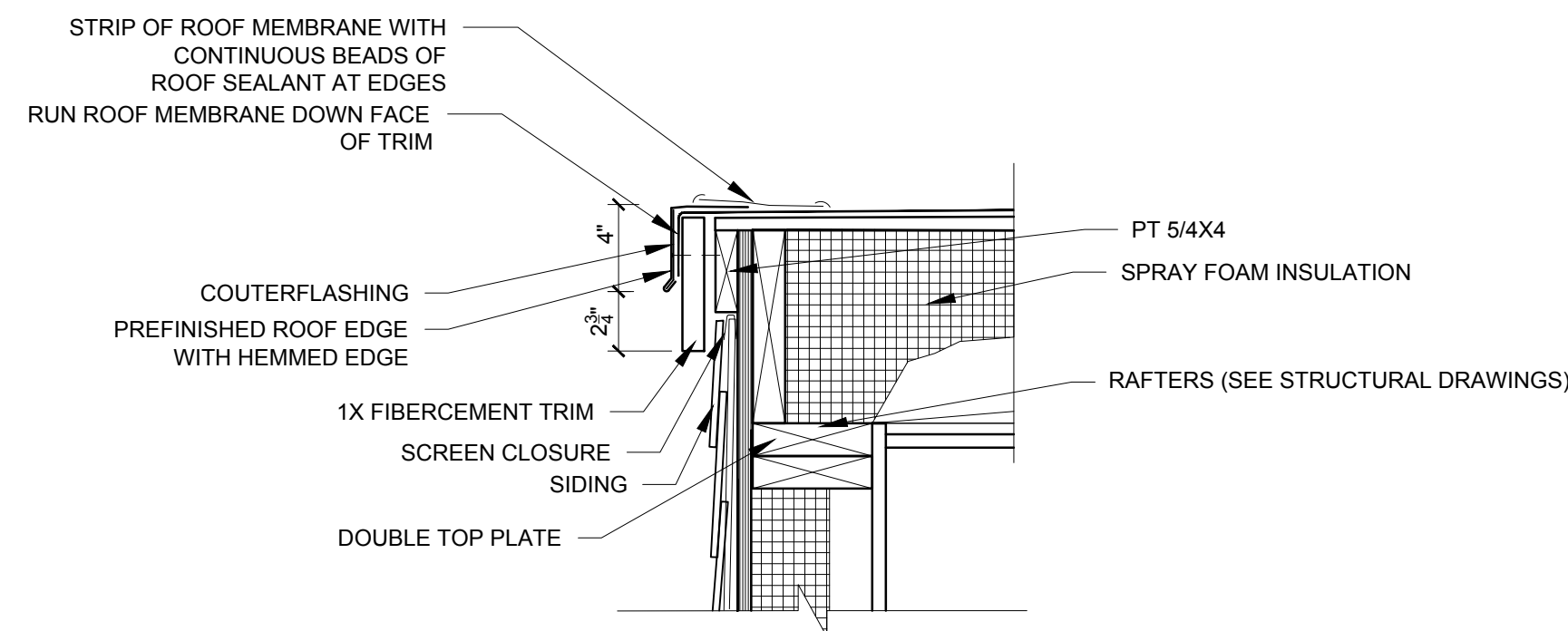
8 TYPICAL FIRE RATED WALL AND FLOOR-CEILING INTERSECTION  
1-1/2" = 1'-0"



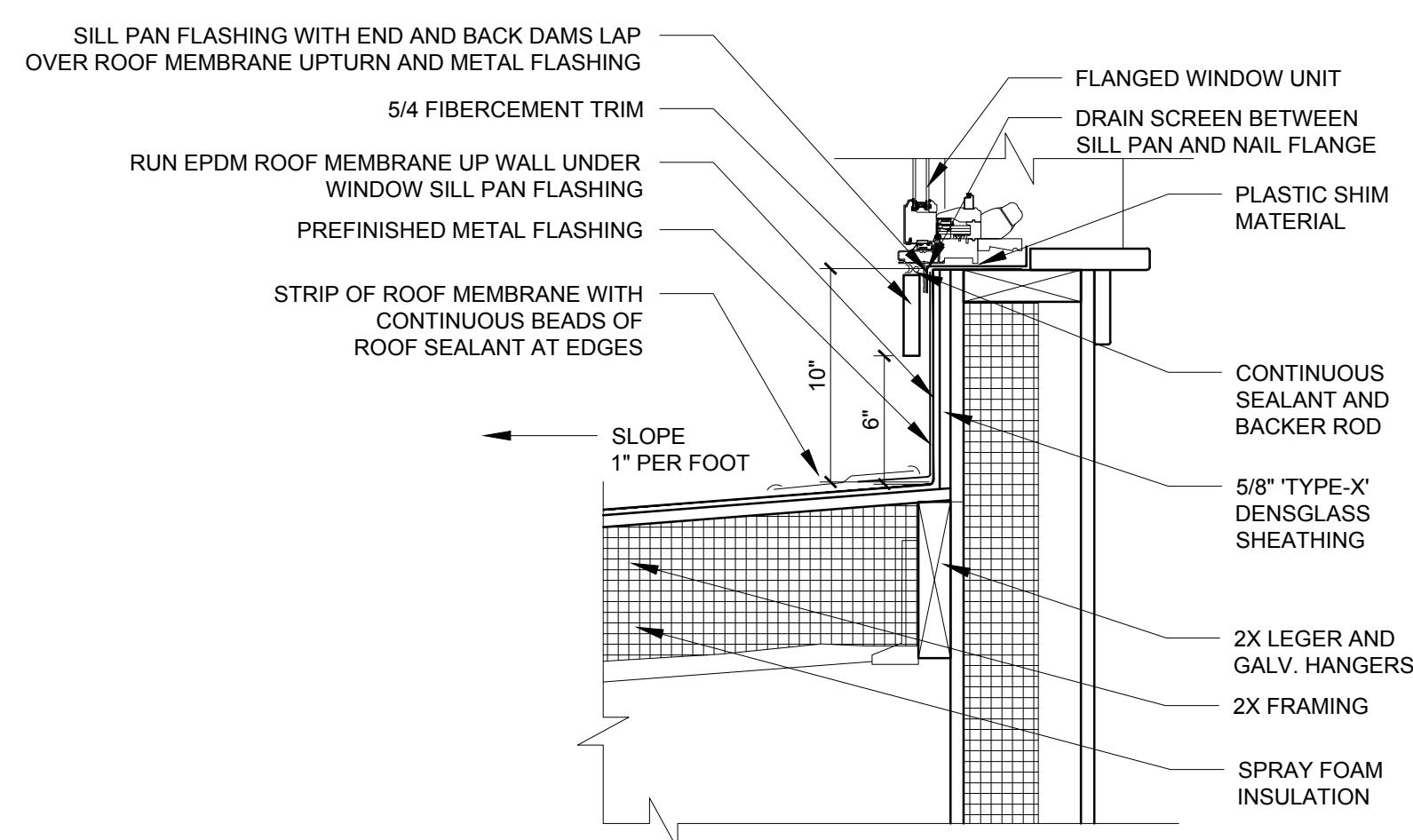
7 ACOUSTICAL SEALING DETAIL AT NON-FIRE RATED WALL  
1-1/2" = 1'-0"



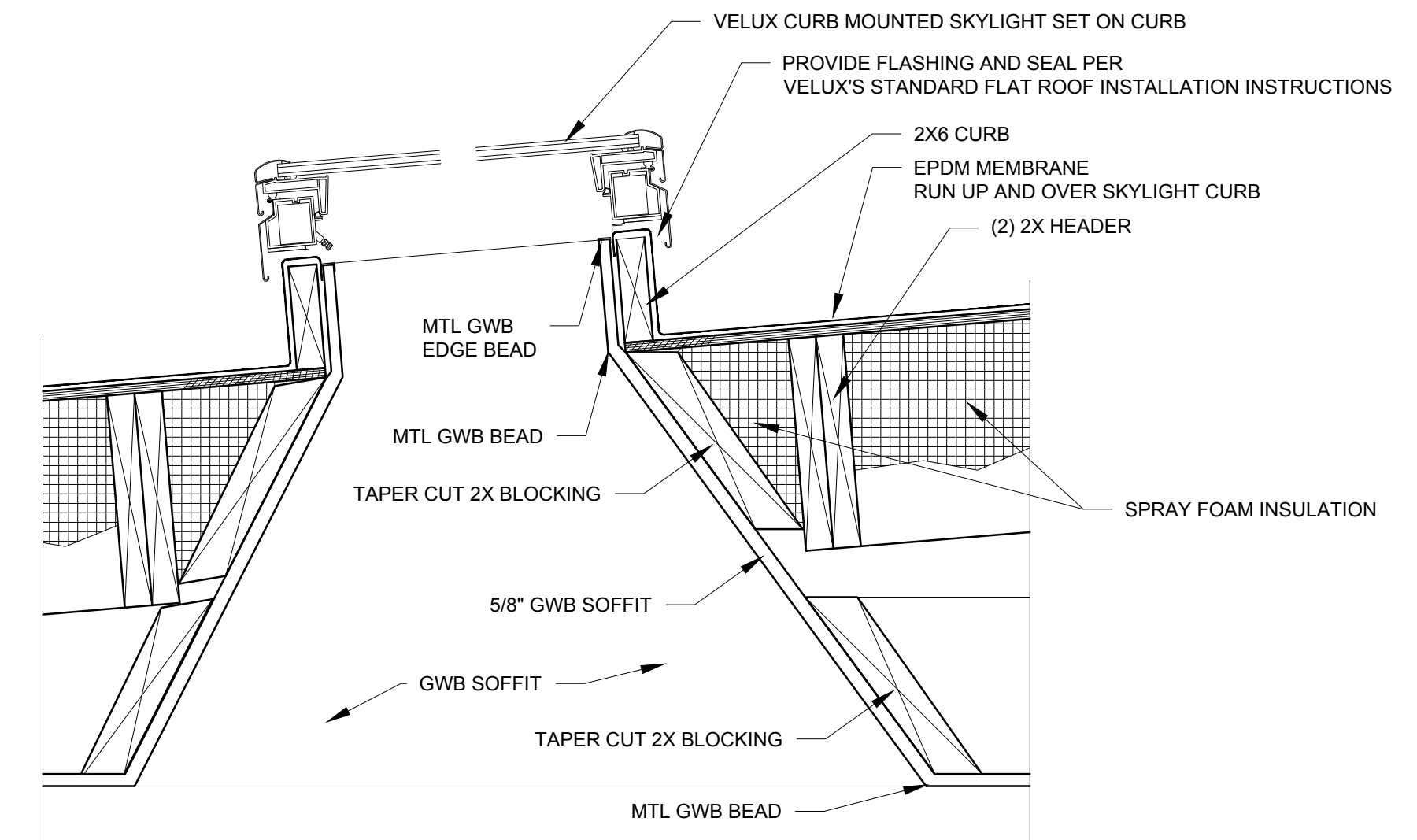
6 ROOF TO WALL TRANSITION DETAIL  
1-1/2" = 1'-0"



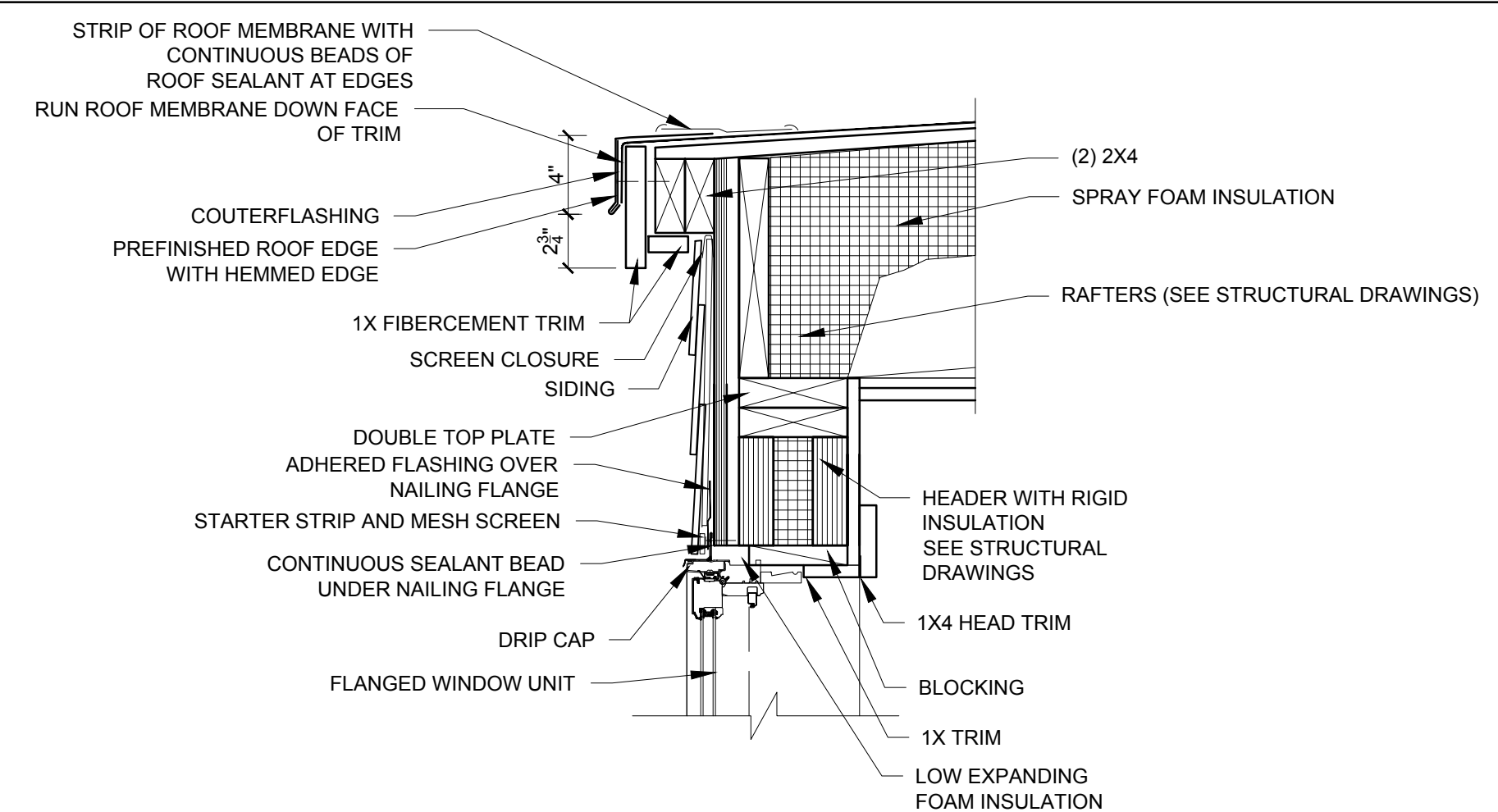
5 STAIR ROOF EDGE RAKE DETAIL  
1-1/2" = 1'-0"



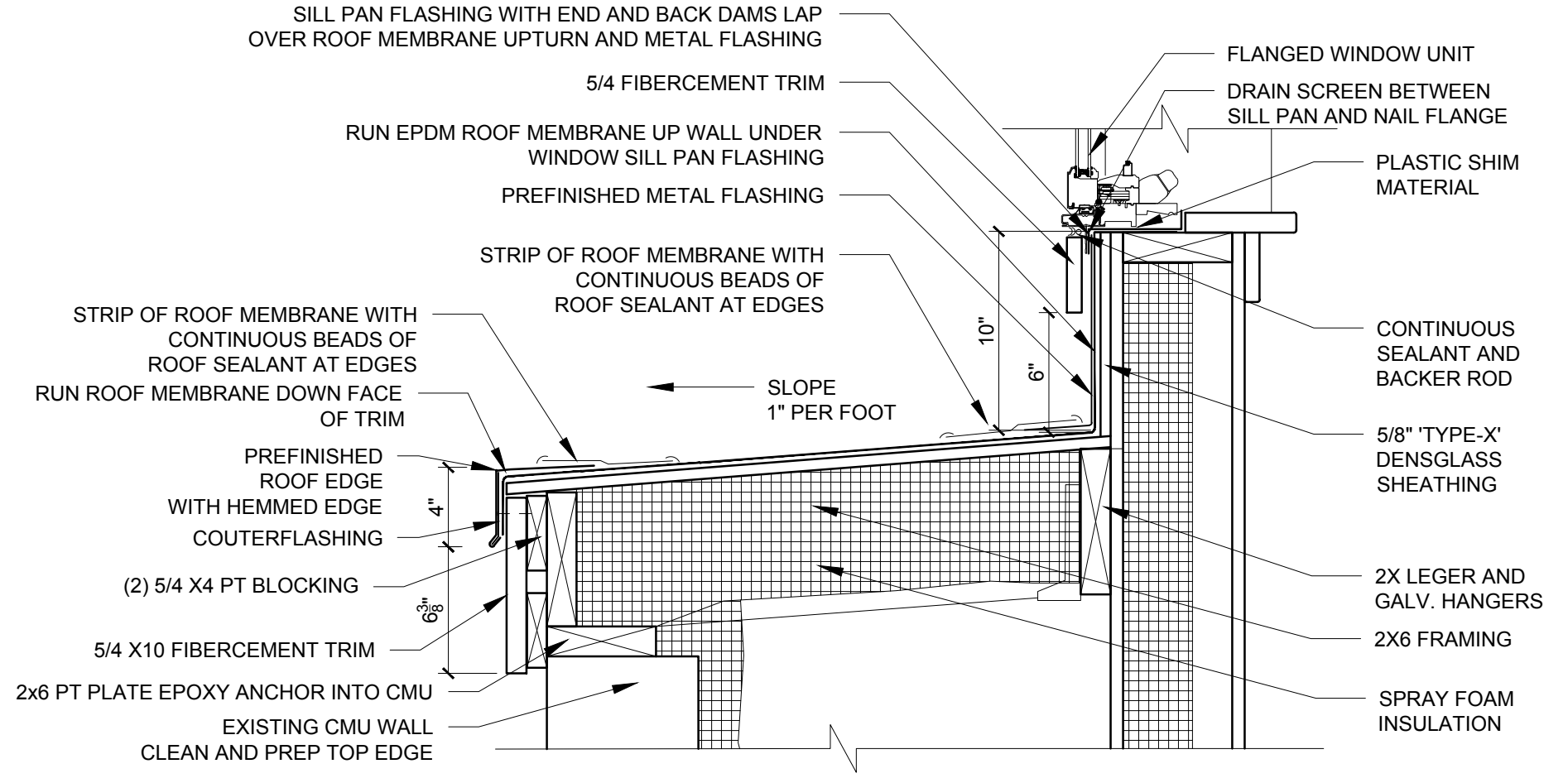
4 SLOPED ROOF AND WINDOW SILL DETAIL  
1-1/2" = 1'-0"



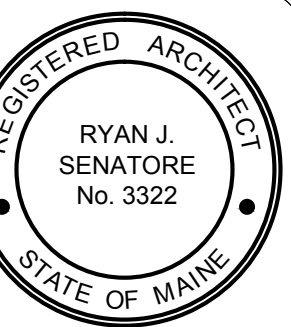
3 SKYLIGHT SECTION DETAIL  
1-1/2" = 1'-0"



2 EAVE AND WINDOW HEAD DETAIL  
1-1/2" = 1'-0"



1 SLOPED ROOF AND WINDOW SILL DETAIL  
1-1/2" = 1'-0"



© 2013 RYAN SENATORE ARCHITECTURE

RENOVATIONS TO  
135 CONGRESS STREET  
PORTLAND, MAINE



RYAN SENATORE  
ARCHITECTURE  
565 CONGRESS STREET, STE. 304  
PORTLAND, MAINE 04101  
207-850-6414  
senatorearchitecture.com

CONSULTANTS:  
STRUCTURAL:  
Structural Integrity  
77 Oak Street  
Portland, ME 04101  
207-774-4614

REVISIONS:

DATE: AUGUST 23, 2013  
PROJECT No. 1317  
DRAWN BY: RJS / RRT  
CHECKED BY: RJS  
SCALE: AS NOTED

SHEET TITLE:  
SECTION  
DETAILS

A5-2