

© 2013 RYAN SENATORE ARCHITECTURE

RENOVATIONS TO  
135 CONGRESS STREET  
PORTLAND, MAINE



**RYAN SENATORE ARCHITECTURE**  
565 CONGRESS STREET, STE. 304  
PORTLAND, MAINE 04101  
207.450.6414  
senatorearchitecture.com

CONSULTANTS:  
STRUCTURAL:  
Structural Integrity  
77 Oak Street  
Portland, ME 04101  
207.774.4614

REVISIONS:

DATE: AUGUST 23, 2013

PROJECT No. 1317

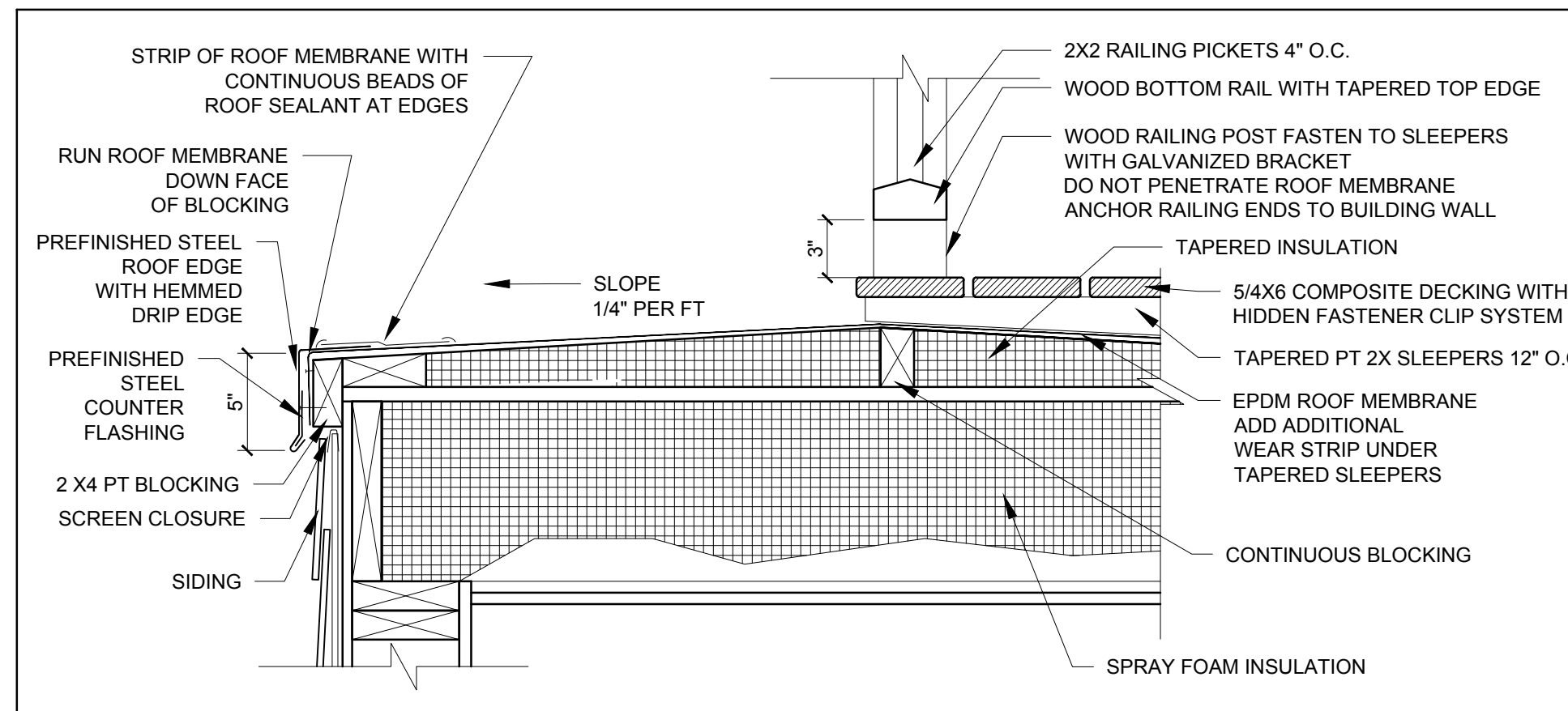
DRAWN BY: RJS / RRT

CHECKED BY: RJS

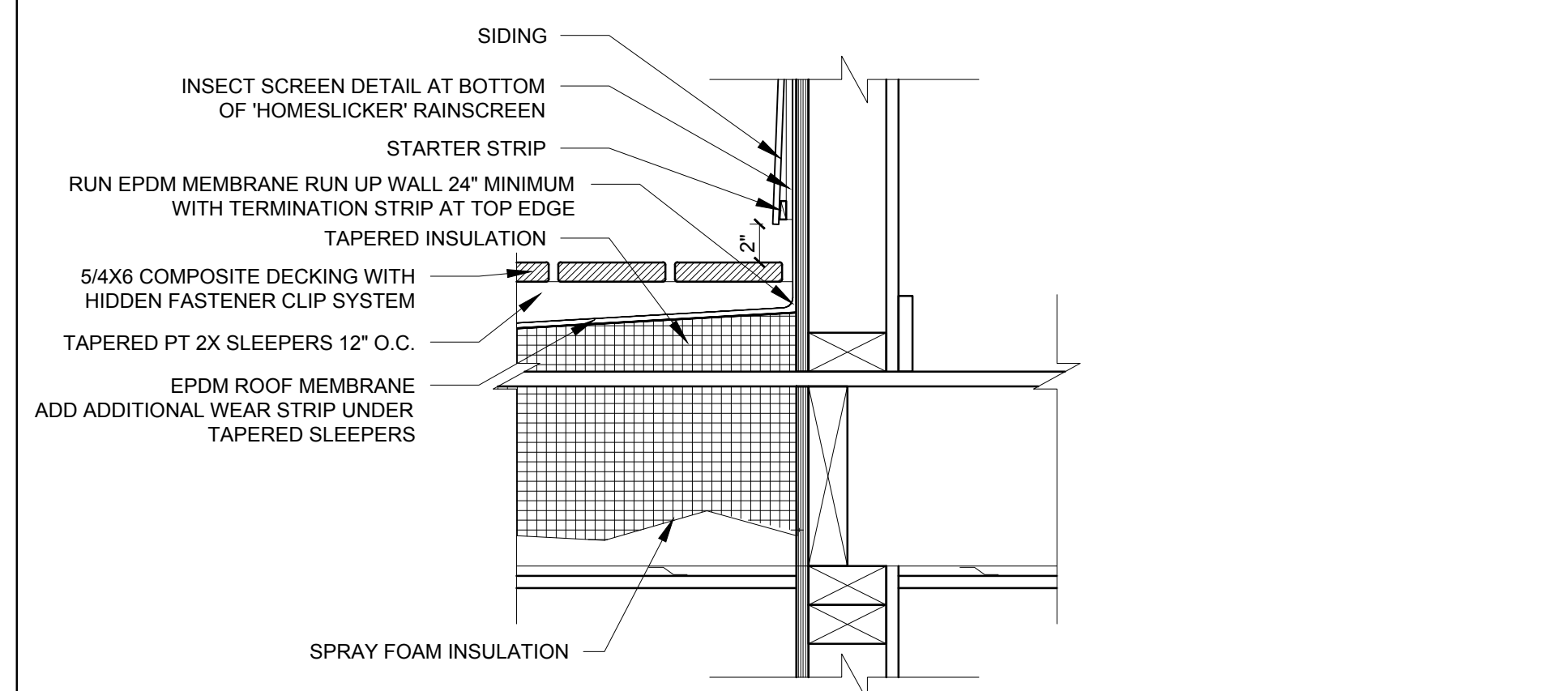
SCALE: AS NOTED

SHEET TITLE:  
SECTION  
DETAILS

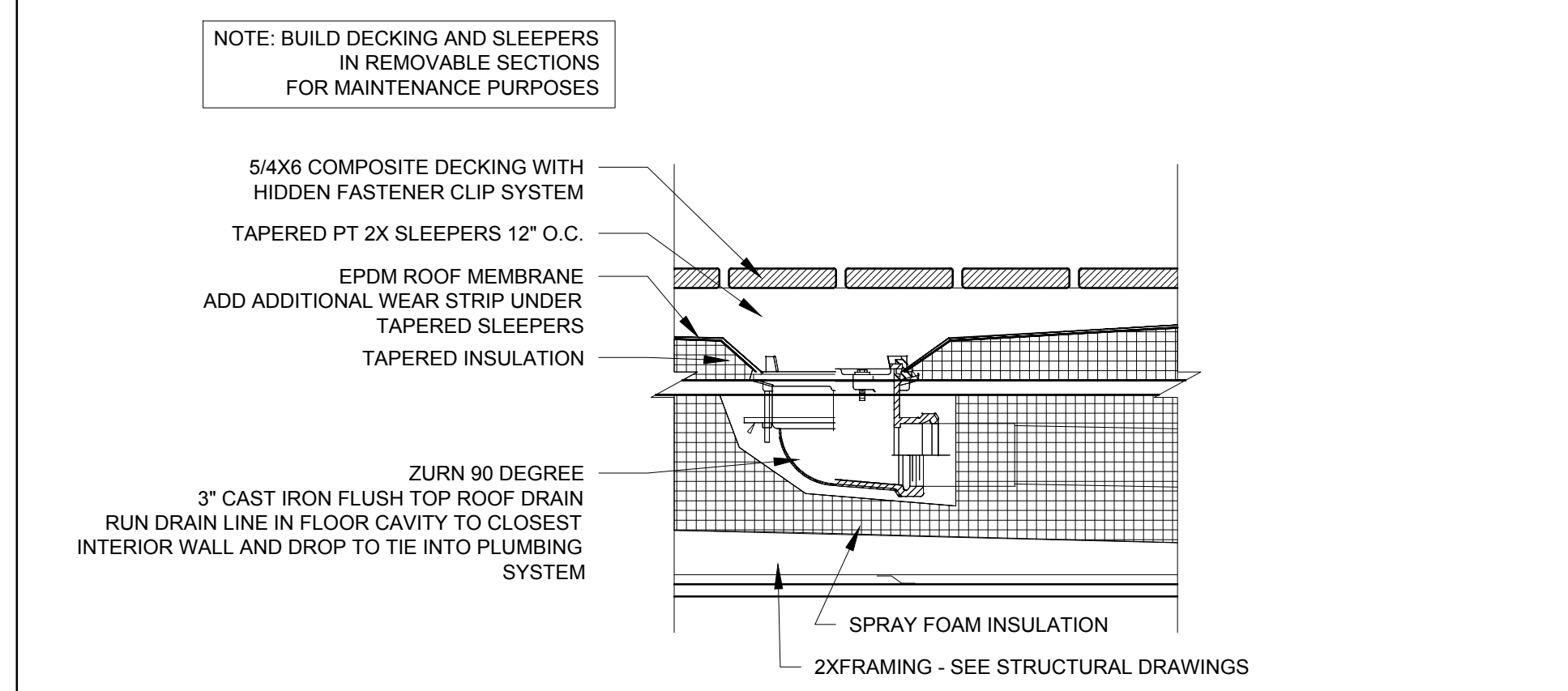
A5-1



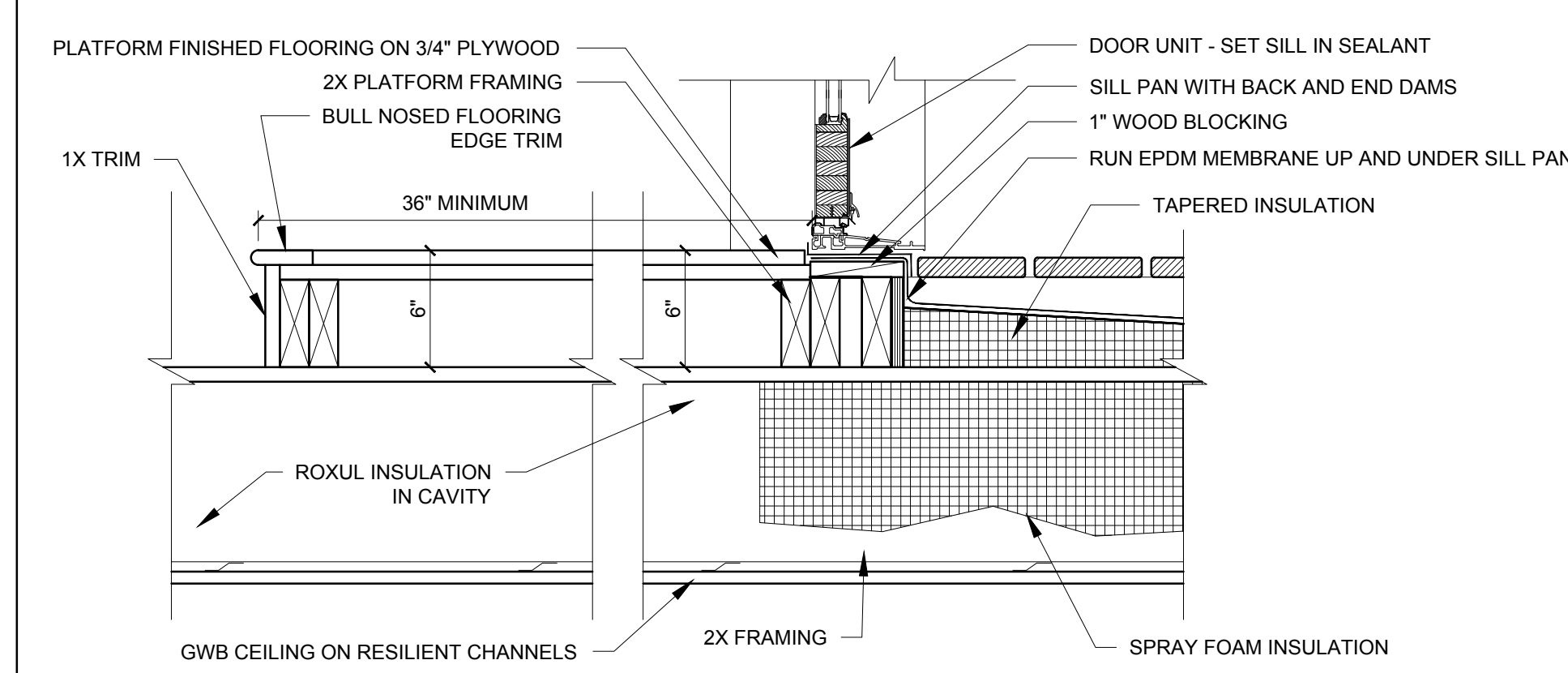
4 DECK EDGE AND ROOF EDGE DETAIL  
1-1/2" = 1'-0"



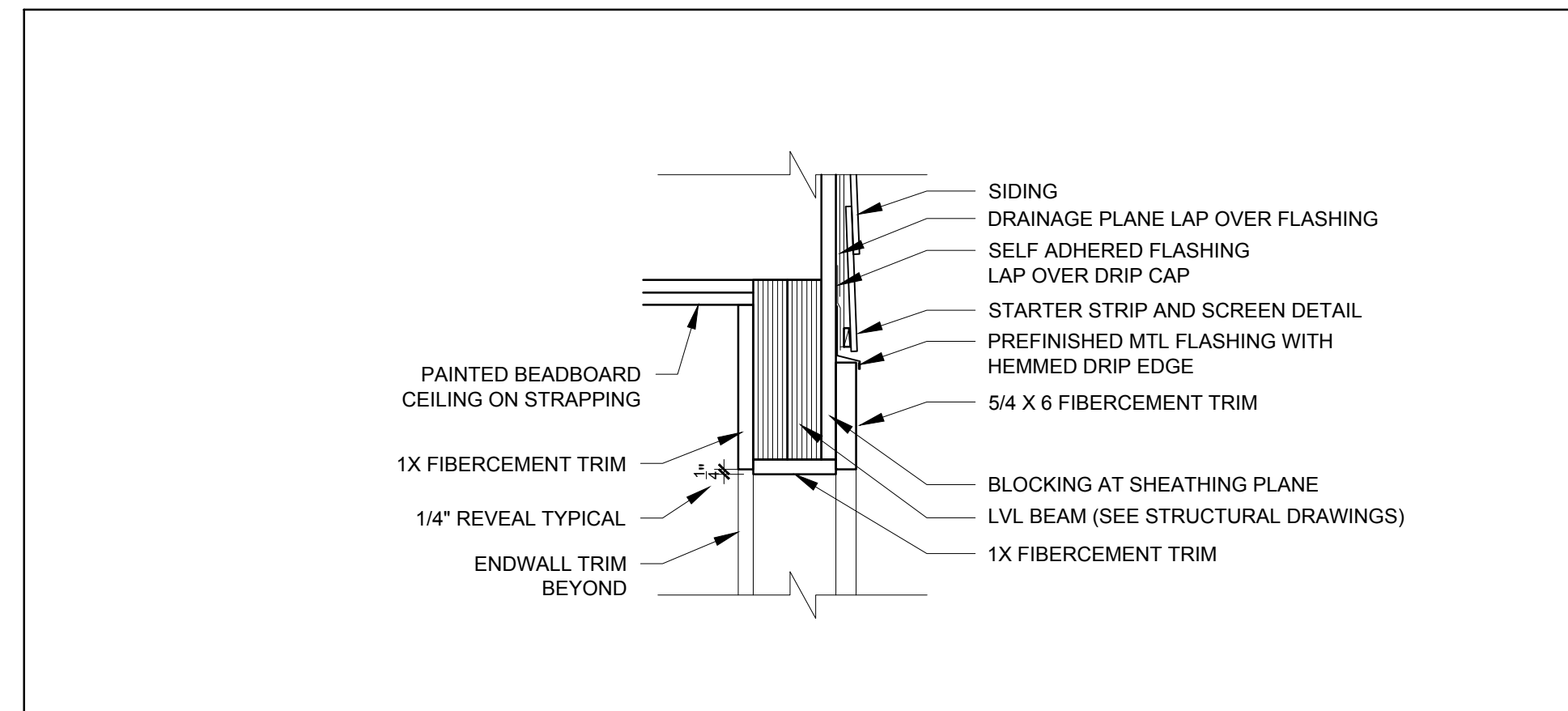
3 DECK DETAIL AT EXTERIOR WALL  
1-1/2" = 1'-0"



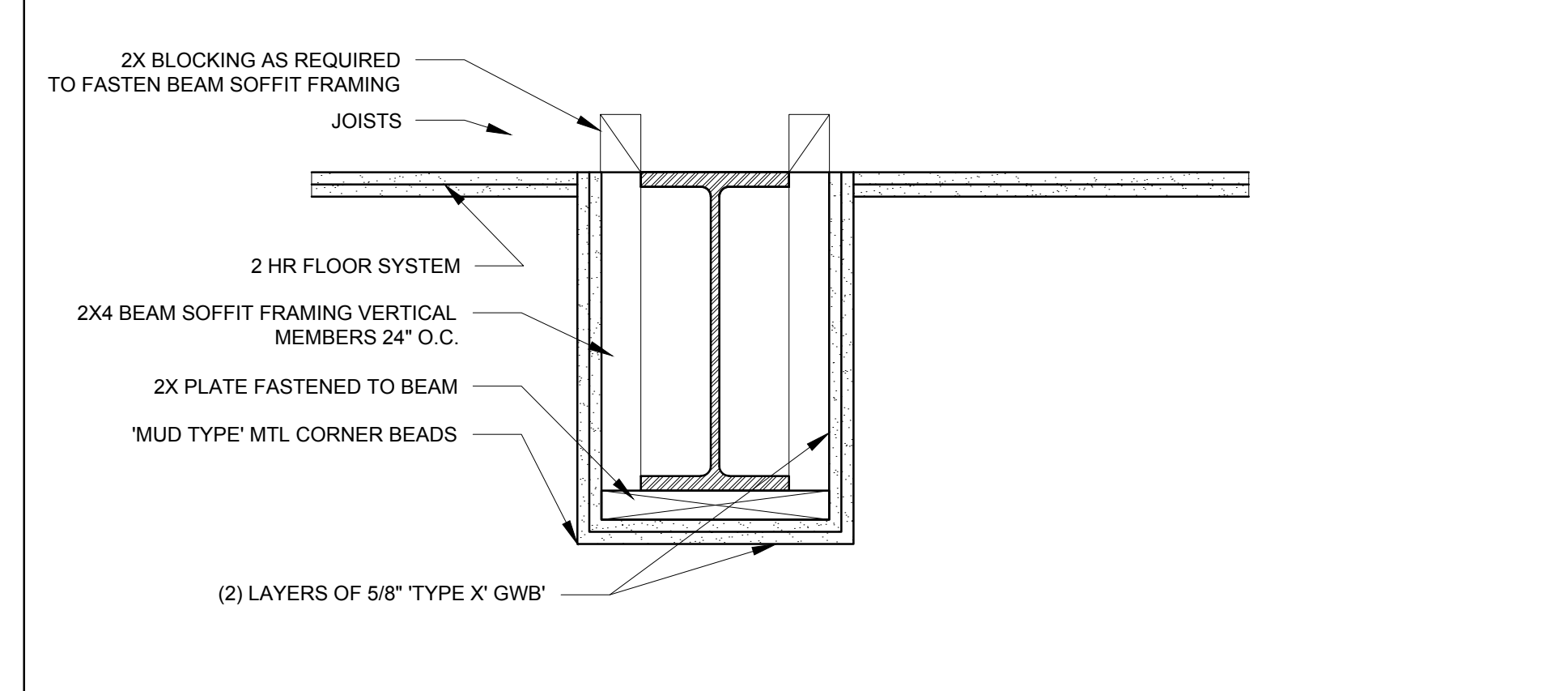
2 DECK DRAIN DETAIL  
1-1/2" = 1'-0"



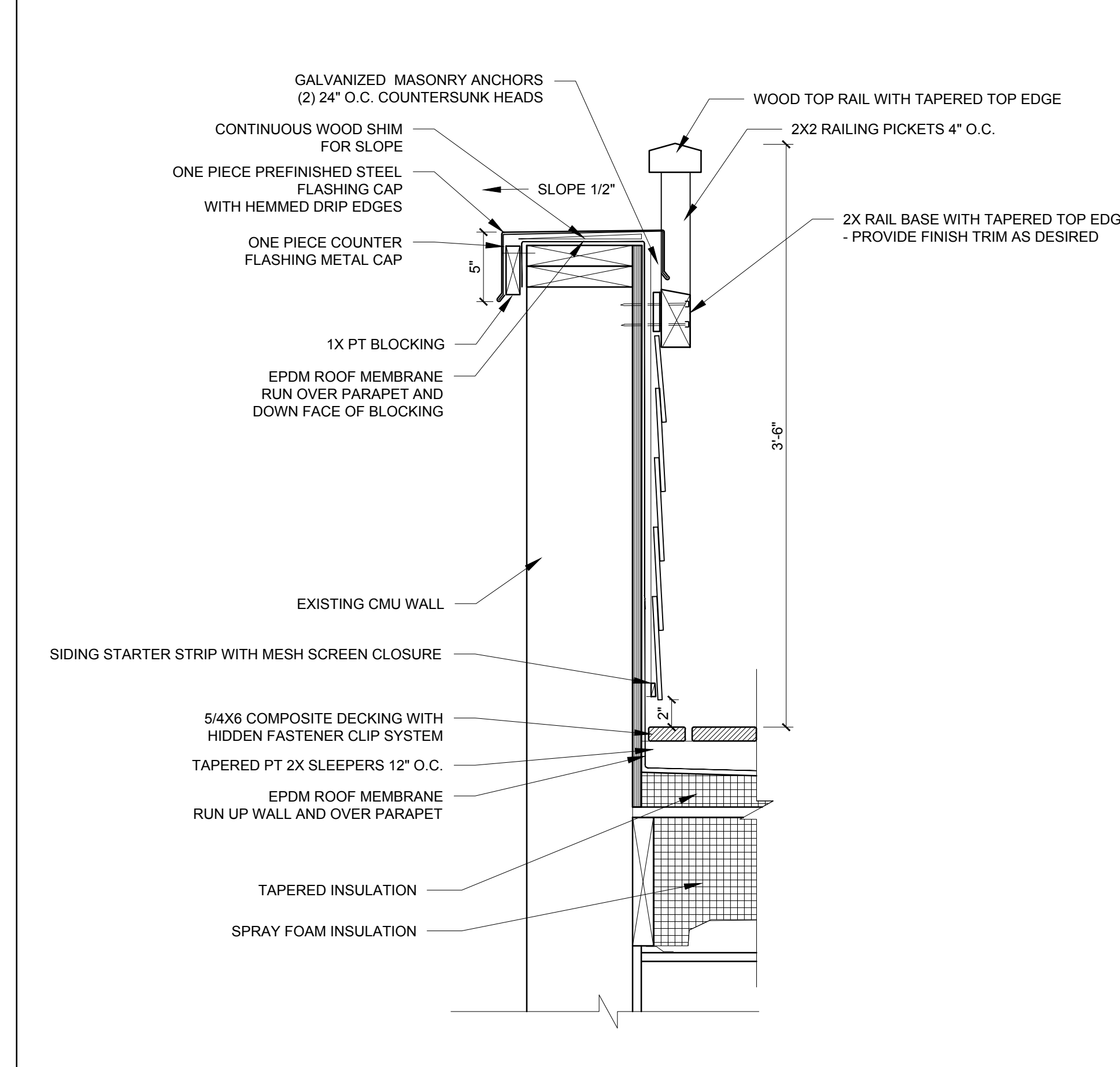
1 DECK DETAIL AT DOOR SILL  
1-1/2" = 1'-0"



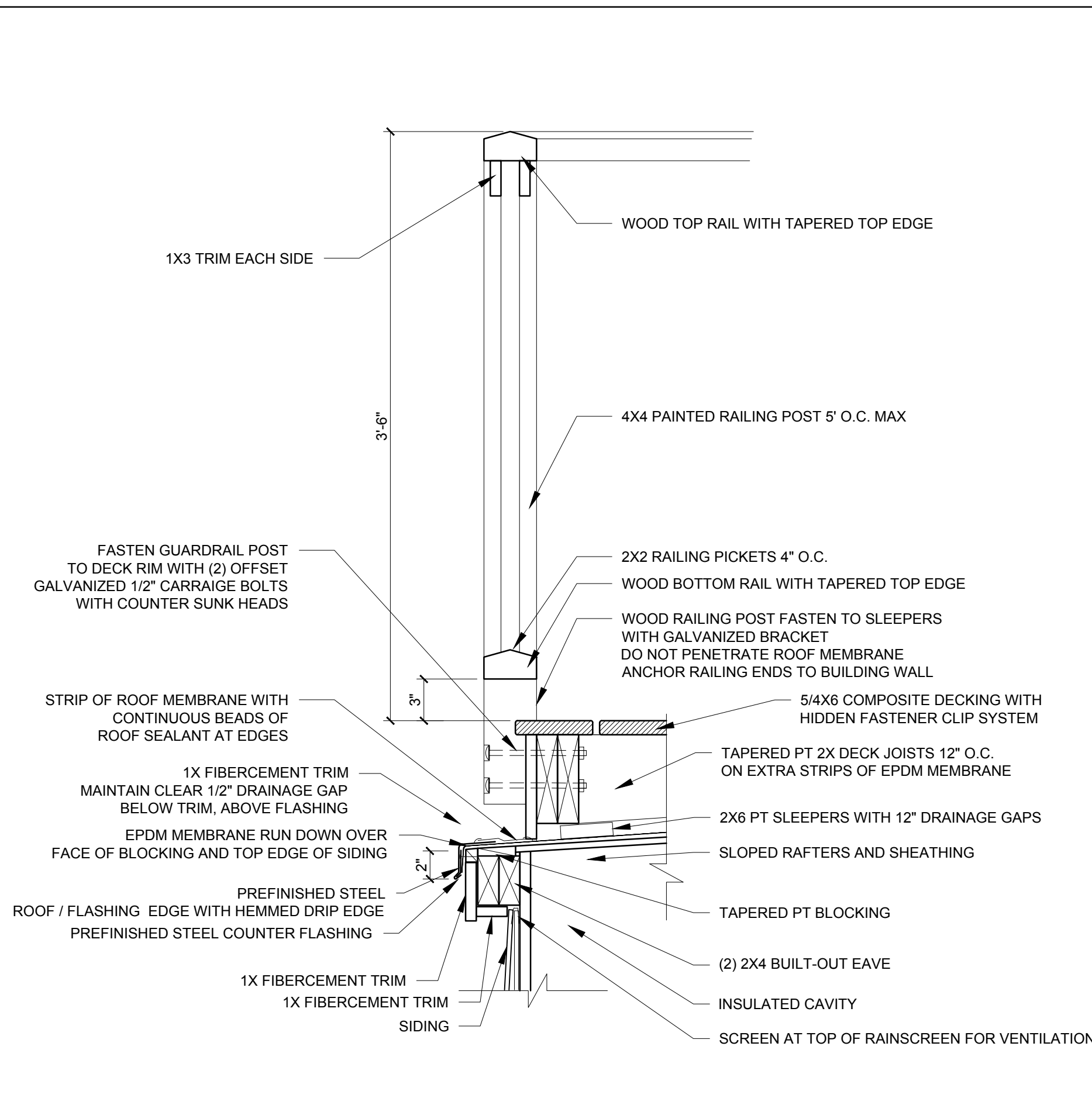
7 NEW PORCH OPENING HEAD DETAIL  
1-1/2" = 1'-0"



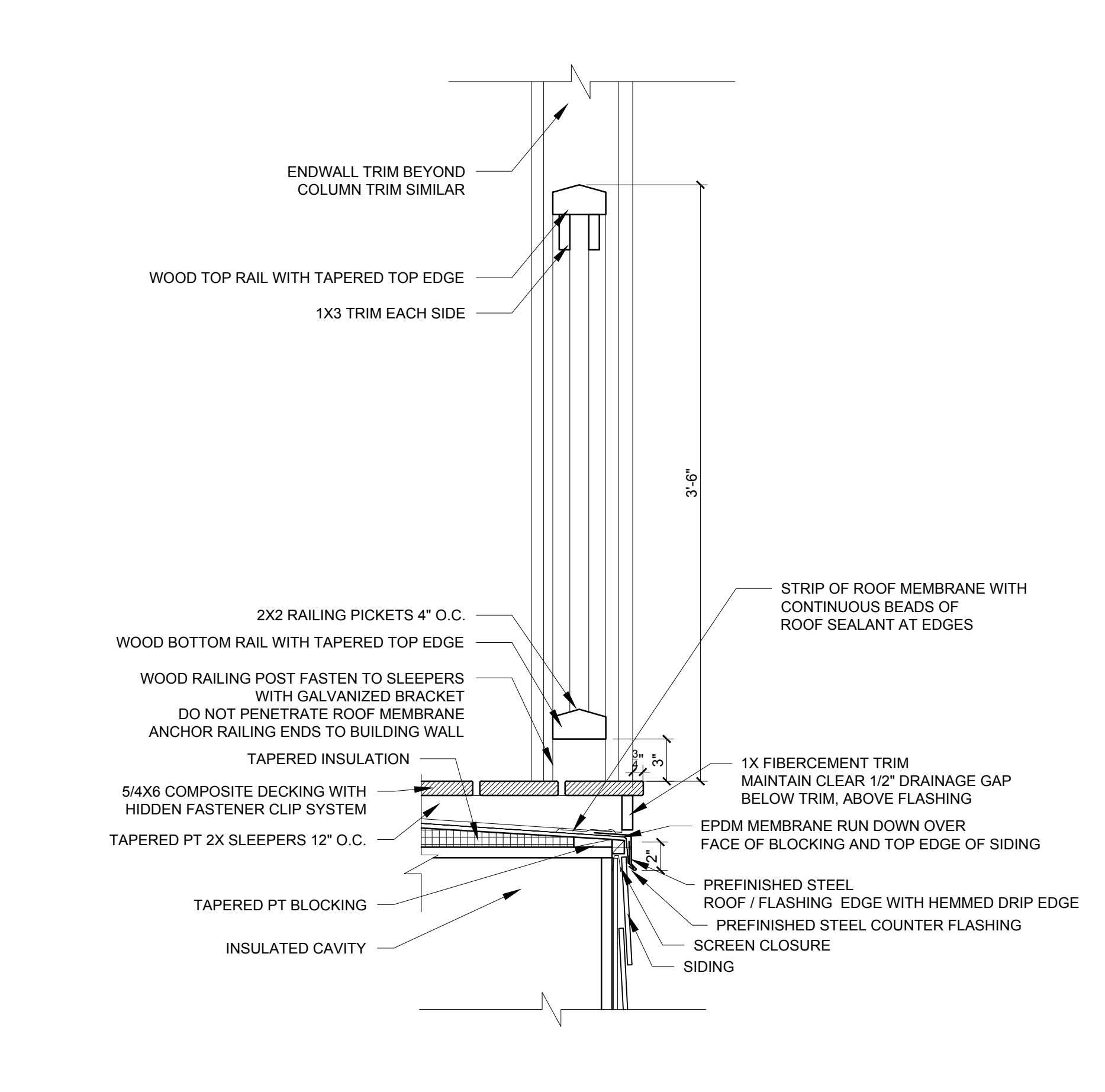
6 STEEL BEAM 2 HR PROTECTION DETAIL  
1-1/2" = 1'-0"



5 DECK DETAIL AT PARAPET AND RAILING  
1-1/2" = 1'-0"



9 ROOFTOP DECK EDGE AND GUARDRAIL DETAIL  
1-1/2" = 1'-0"



8 NEW PORCH OPENING DECK EDGE AND GUARDRAIL DETAIL  
1-1/2" = 1'-0"