

© 2013 RYAN SENATORE ARCHITECTURE

RENOVATIONS TO
135 CONGRESS STREET
PORTLAND, MAINE



RYAN SENATORE
ARCHITECTURE
565 CONGRESS STREET, STE. 304
PORTLAND, MAINE 04101
207-650-6414
senatorearchitecture.com

CONSULTANTS:

STRUCTURAL:
Structural Integrity
17 Oak Street
Portland, ME 04101
207-774-4614

REVISIONS:

DATE: SEPTEMBER 6, 2013

PROJECT No.

DRAWN BY: RJS / RRT

CHECKED BY: RJS

SCALE: AS NOTED

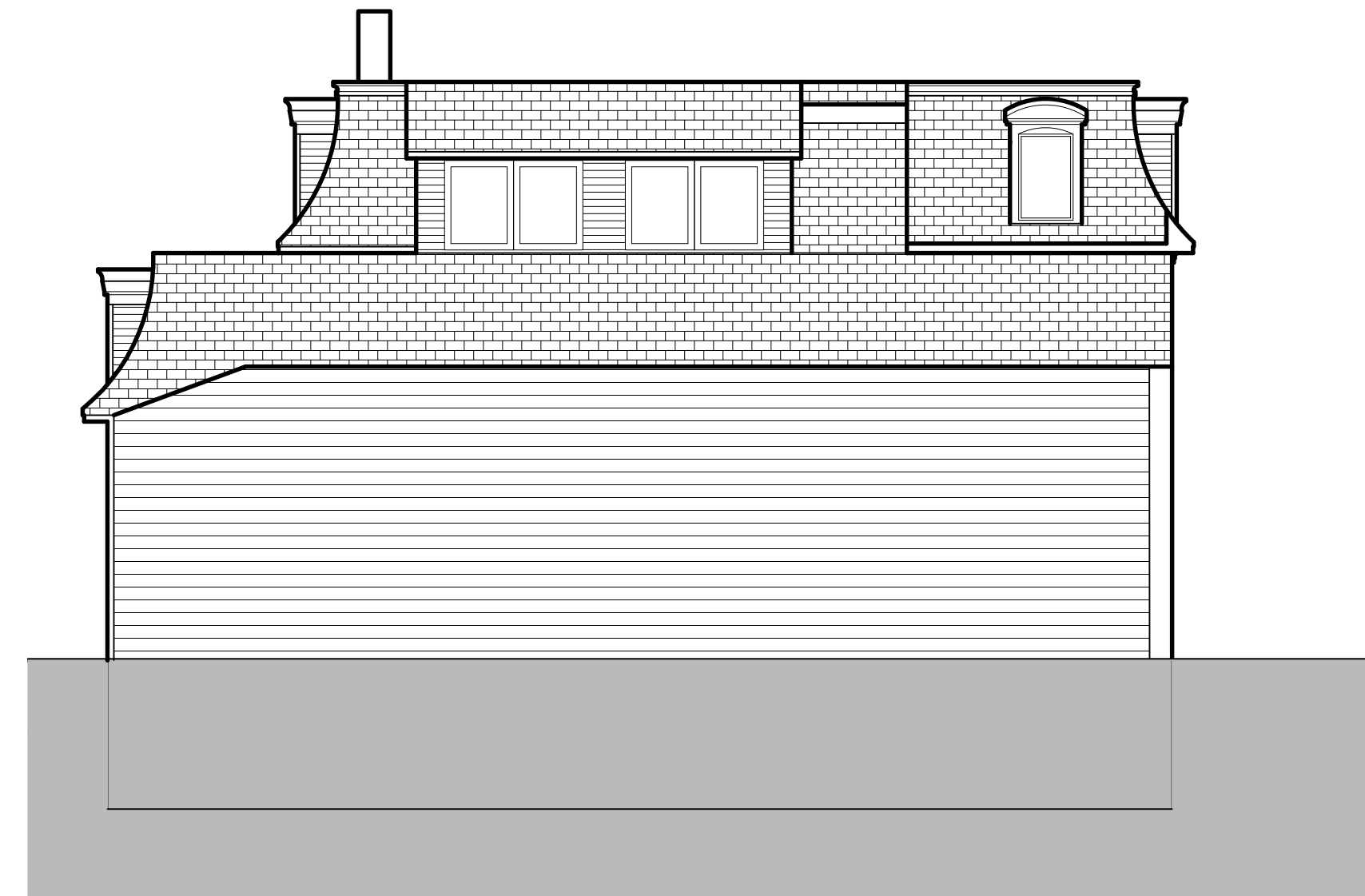
SHEET TITLE:

EXISTING
ELEVATIONS

A2-4

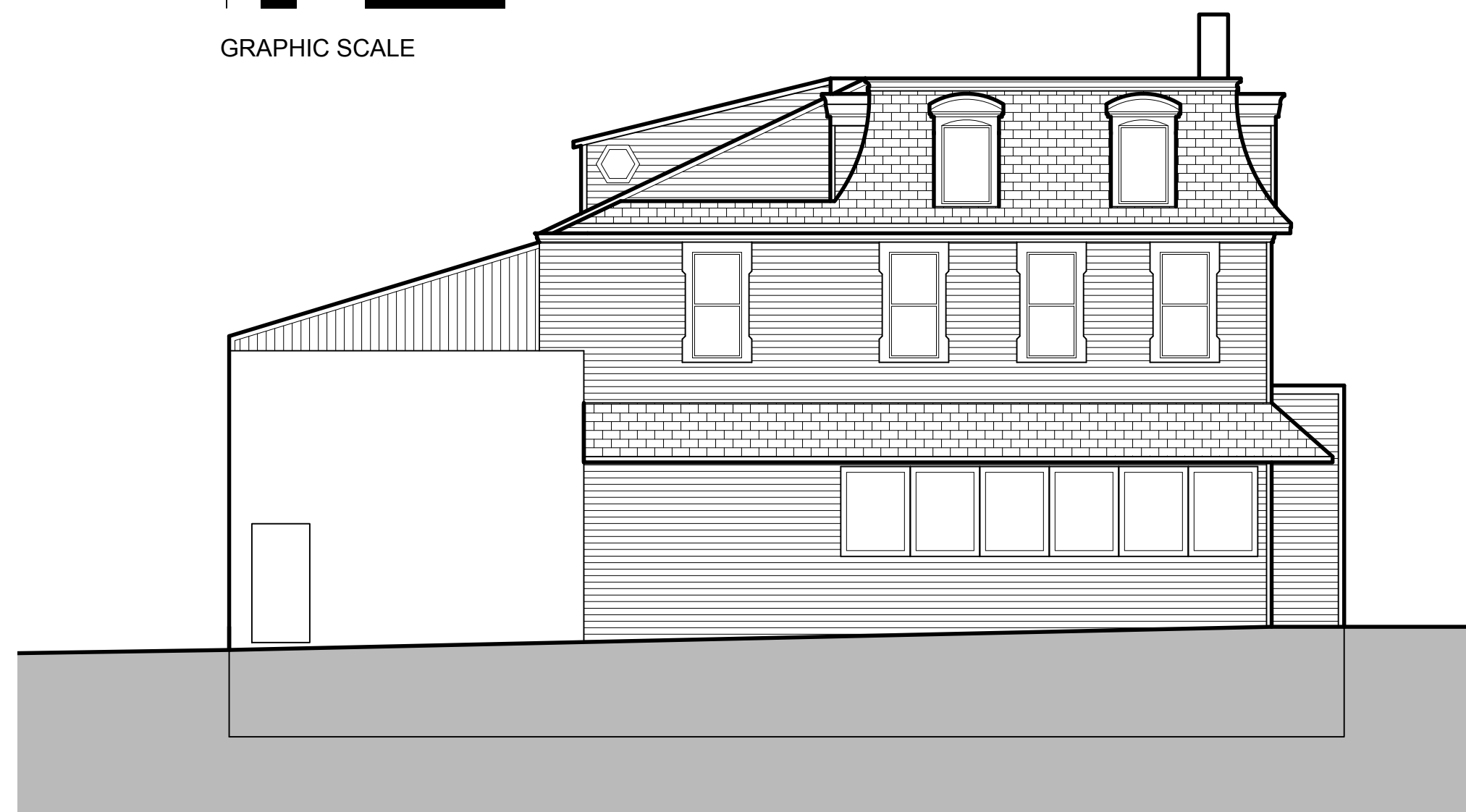


4 NORTH ELEVATION
1/8"=1'-0"



2 WEST ELEVATION
1/8"=1'-0"

0 2' 4' 8' 16'
GRAPHIC SCALE



3 SOUTH ELEVATION
1/8"=1'-0"



1 EAST ELEVATION
1/8"=1'-0"