

LIFE SAFETY SYMBOL KEY:
REFER TO A5.1 FOR FIRE RATED ASSEMBLIES

-  ONE (1) HOUR PARTITION / BARRIER (1-WAY ONLY)
-  ONE (1) HOUR PARTITION / BARRIER (2-WAY)
-  TWO (2) HOUR SEPARATION / BARRIER
-  EMERGENCY LIGHT

 **SMOKE DETECTOR**

EXTENT OF UNPROTECTED OPENINGS IN EXTERIOR WALLS CLOSE TO A LOT LINE:

NORTH-EAST WALL IS BETWEEN 5' & 10' OF LOT LINE
ALLOWABLE PERCENTAGE OF UNPROTECTED OPENINGS = 10% (PER IBC TABLE 704.8)

AREA OF NORTH-EAST ELEVATION = 1,840 SF
 AREA OF UNPROTECTED WINDOWS = +/- 90 SF
 AREA OF UNPROTECTED VENTS = +/- 10 SF
 AREA OF UNPROTECTED OPENINGS = +/- 100 SF
 UNPROTECTED PERCENTAGE OF WALL = +/- 5.5%

LIFE SAFETY NOTES:

BUILDING OCCUPANCY: R2 (3 unit residential, non-townhouse)

BUILDING CODES: IRC-2003, NFPA-101

FLOOR AREA: Basement = 1,820 SF
 1st. floor = 1,930 SF
 2nd. floor = 1,930 SF
 3rd. floor = 885 SF
 Total area = 6,565 SF (gross enclosed floor area)

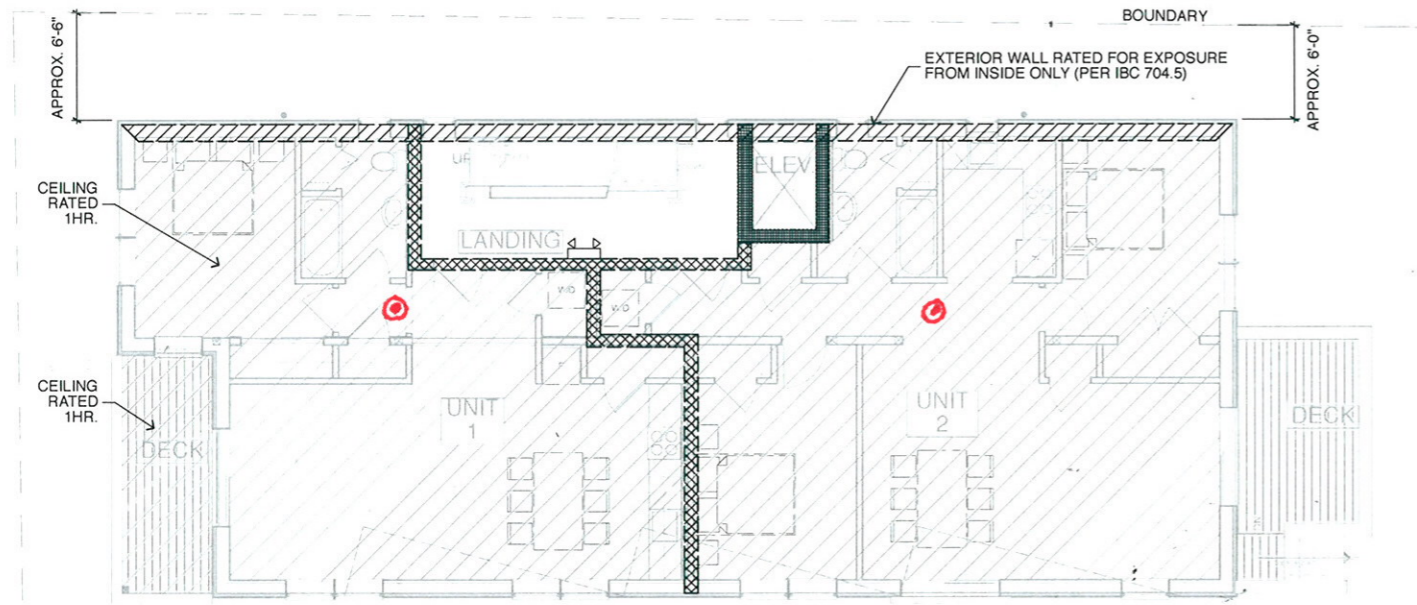
CONSTRUCTION TYPE: Type 5B

SPRINKLERS: Residential 13-R throughout the building

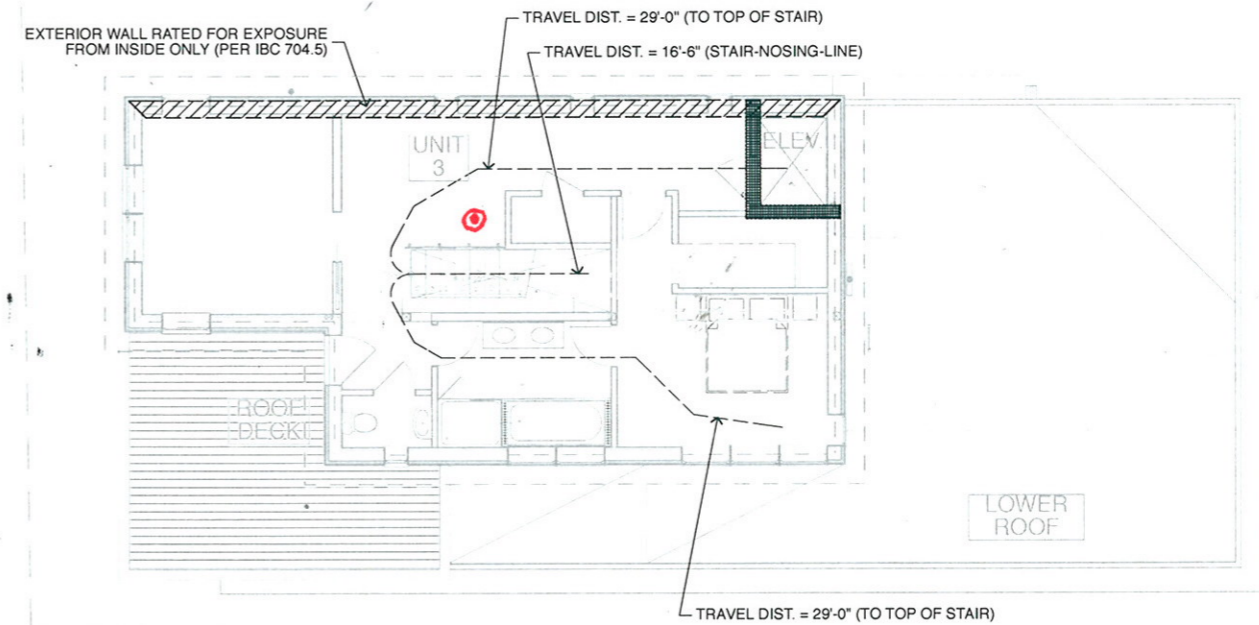
BUILDING HEIGHT: One (1) basement floor below grade plane. Three (3) floors above grade plane
 Highest floor is less than 30' above lowest level of fire department vehicle access

ELEVATOR: Residential - one family only (non-shared use)
 In-line geared drive elevator, 36"x60" car size, load capacity 950#, speed 40 FPM

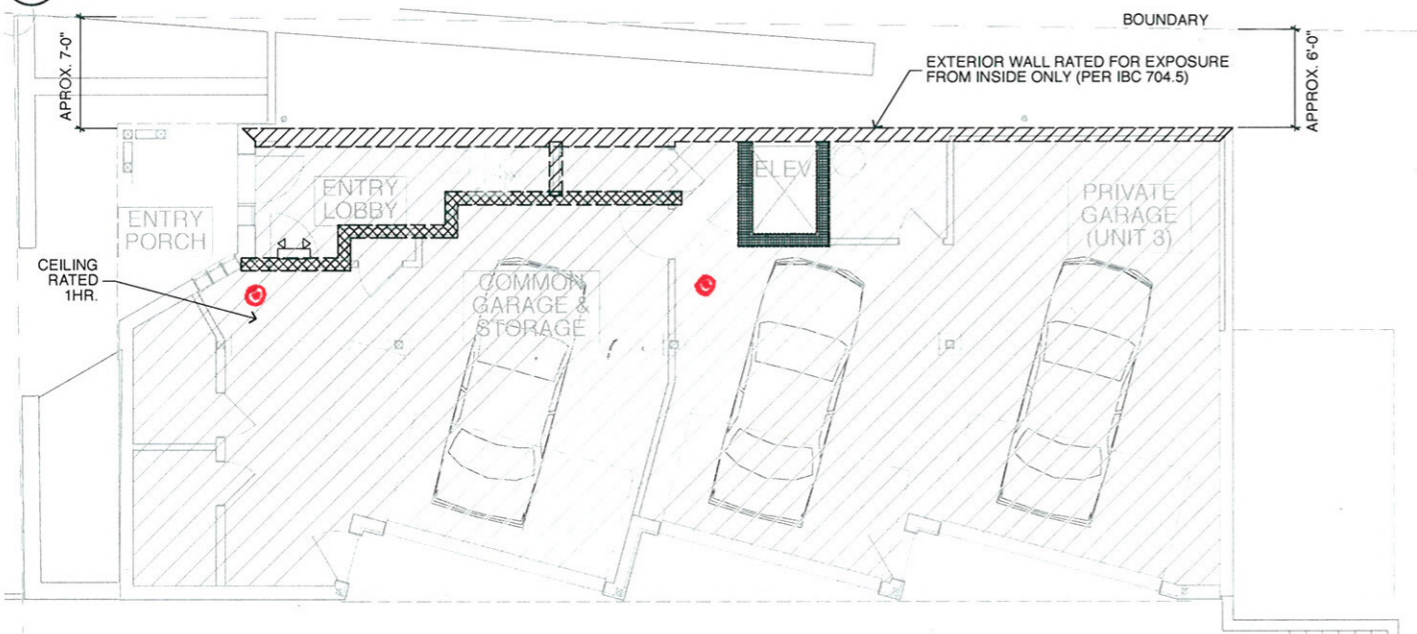
NUMBER OF EXITS: Building with one exit



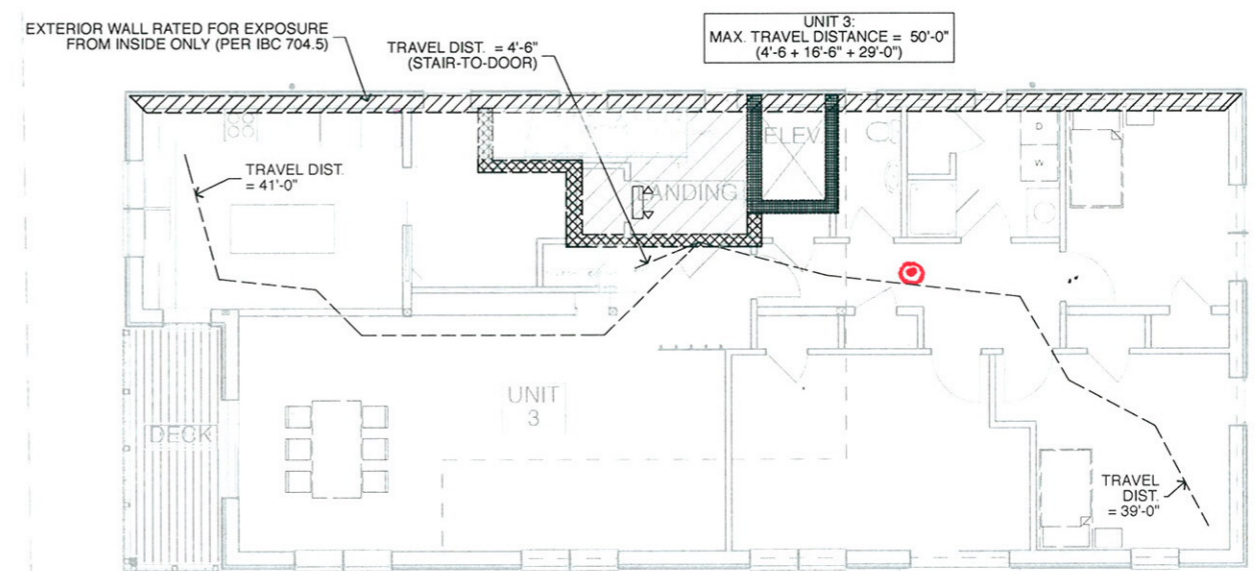
2 1st. floor plan
SCALE: 3/16" = 1'-0"



4 3rd. floor plan
SCALE: 3/16" = 1'-0"



1 Basement plan
SCALE: 3/16" = 1'-0"



3 2nd. floor plan
SCALE: 3/16" = 1'-0"