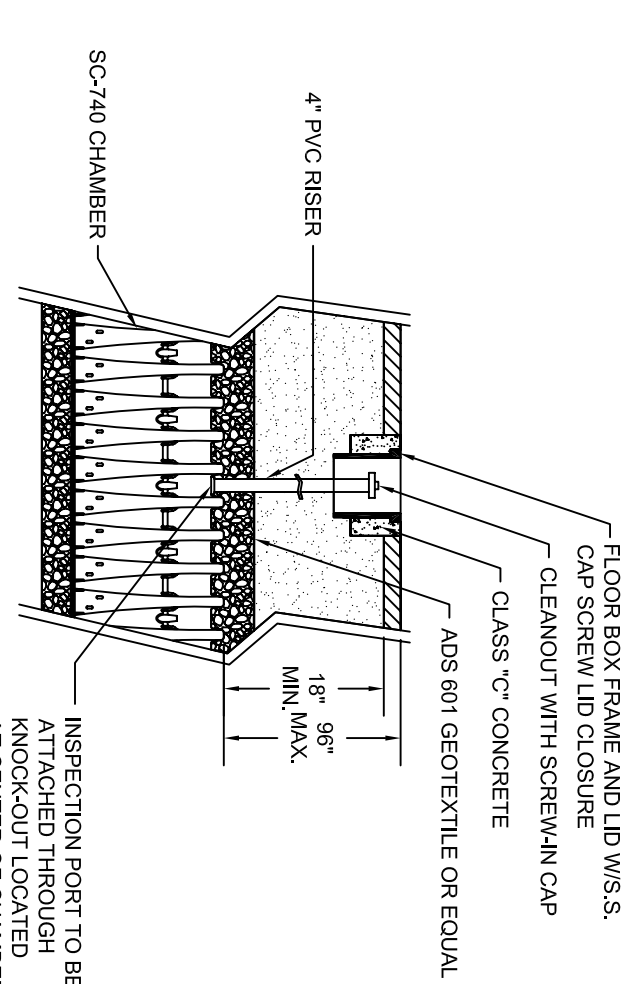


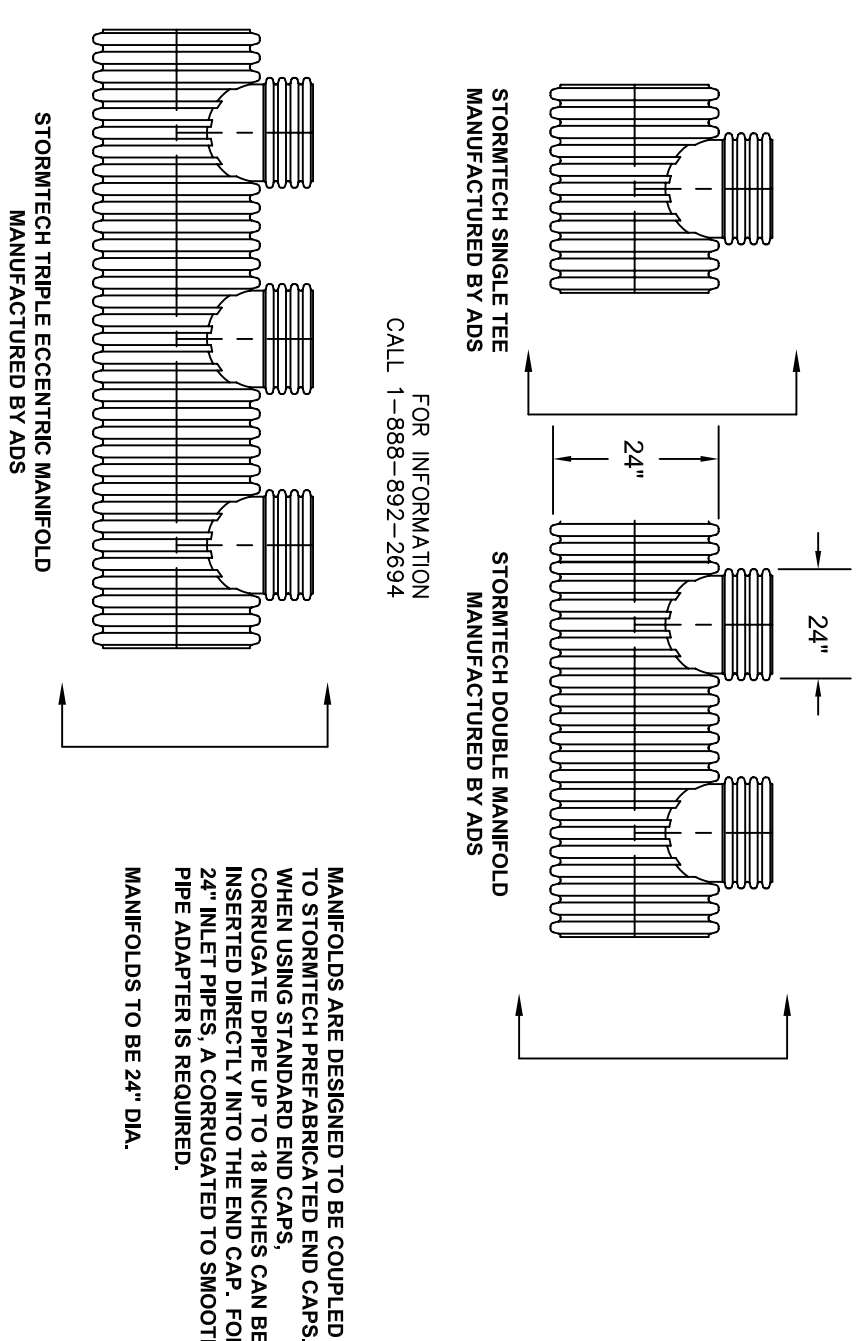
**ACCEPTABLE FILL MATERIALS
STORMTECH SC-740 CHAMBER SYSTEMS**

MATERIAL LOCATION	DESCRIPTION	ASHTO M43 DESIGNATION	ASHTO M45 DESIGNATION	COMPACTION/DENSITY REQUIREMENT
FILL MATERIAL FROM 18" TO GRADE ABOVE CHAMBERS	ANY SOIL/ROCK MATERIALS, NATIVE SOILS OR PER ENGINEER'S PLANS, (SEE ON SHEET C-10)	N/A	N/A	PREPARE PER ENGINEER'S PLANS. PAVED INSTALLATIONS MAY HAVE STRINGENT MATERIAL AND PREPARATION REQUIREMENTS.
FILL MATERIAL FOR R-T JOINTS, CHAMBERS, (2" FOR UNPAVED INSTALLATIONS)	GRANULAR FILL, COARSE SAND OR FINE SAND, <5% FINES	3.357, 4.467, 5.577, 6.687, 7.797, 8.899, 9.10	M-1, M-2, M-3	COMPACT IN 6" LIFTS TO A MINIMUM 95% RELATIVE DENSITY. VEHICLE WEIGHT NOT TO EXCEED 12,000 LBS. DYNAMIC FORCE NOT TO EXCEED 20,000 LBS.
EMBEDMENT STONE SURROUNDING TO AN ELEVATION 12" ABOVE & 6" BELOW CHAMBERS	WASHED ANGULAR STONE WITH THE MAJORITY OF PARTICLES BETWEEN 1/2" - 2 INCH	3.357, 4.467, 5.577	N/A	NO COMPACTION REQUIRED
FOUNDATION BELOW CHAMBERS	WASHED ANGULAR STONE WITH THE MAJORITY OF PARTICLES BETWEEN 1/2" - 2 INCH	3.357, 4.467, 5.577	N/A	PLATE COMPACT OR ROLL TO ACHIEVE A 95% STANDARD PROCTOR DENSITY
SUBSURFACE SOIL FILTER	SEE CROSS SECTION	N/A	N/A	

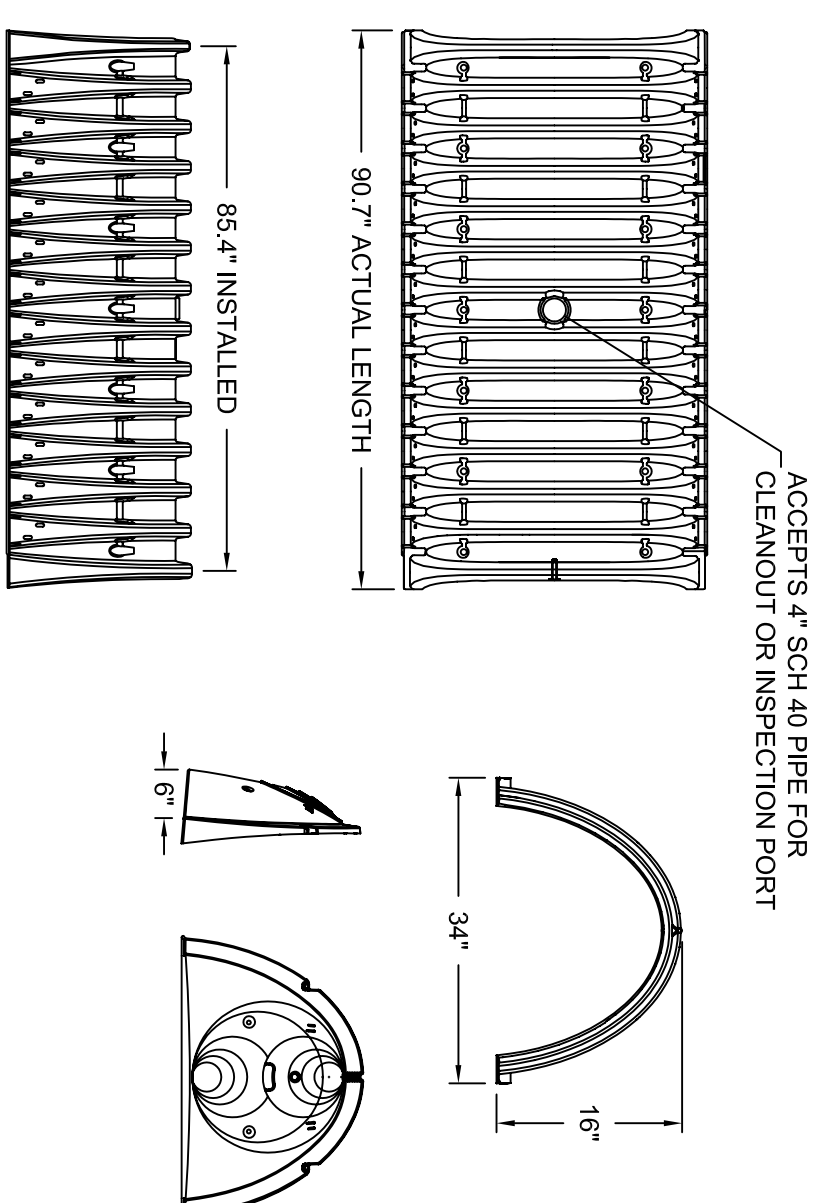
STORMTECH ACCEPTABLE FILL MATERIALS



STORMTECH INSPECTION PORT DETAIL
NOT TO SCALE



ADS MANIFOLDS
NOT TO SCALE



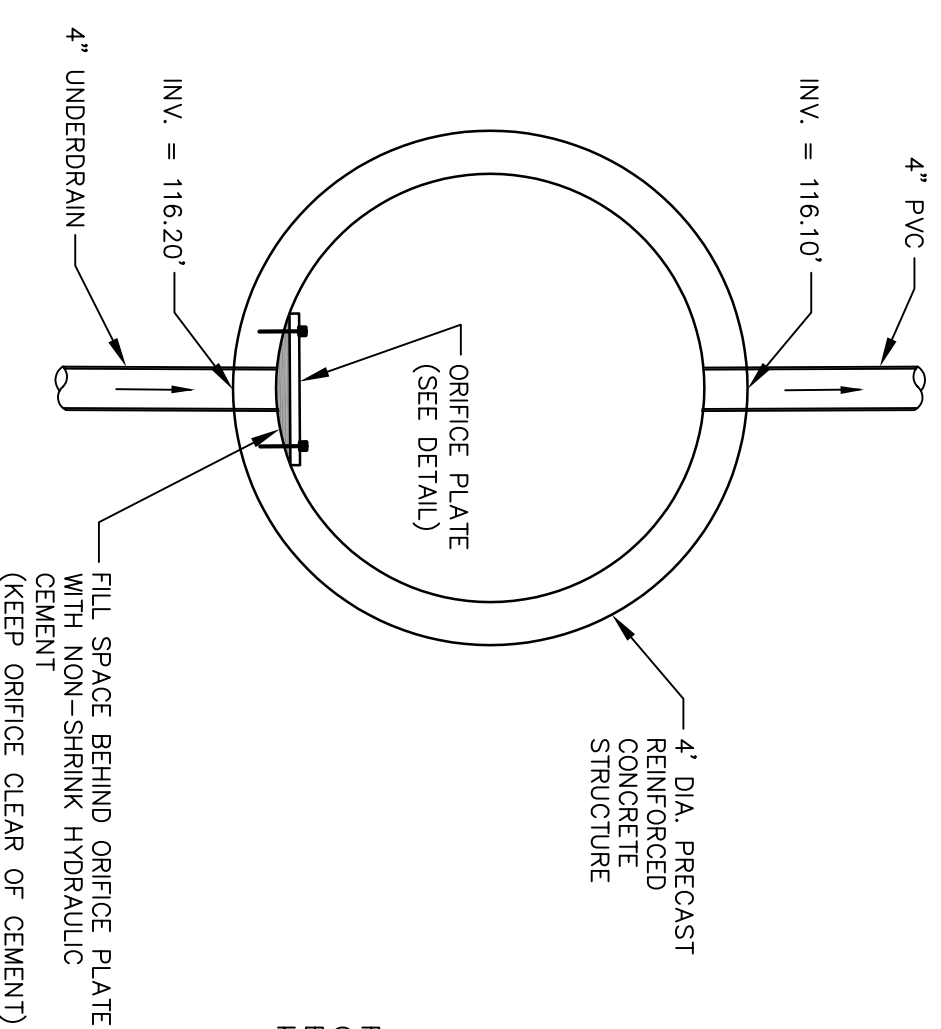
NOMINAL CHAMBER SPECIFICATIONS
 36" X 16" X 84.5"
 14.7 CUBIC FEET
 31.0 CUBIC FEET
 37 LBS

CHAMBER	PIPE SIZE
SC 310	12 in (300 mm)

NOTE: ALL DIMENSIONS ARE NOMINAL
 UNLESS OTHERWISE SPECIFIED
 FROM ALL DIMENSIONS
 1-888-892-2694

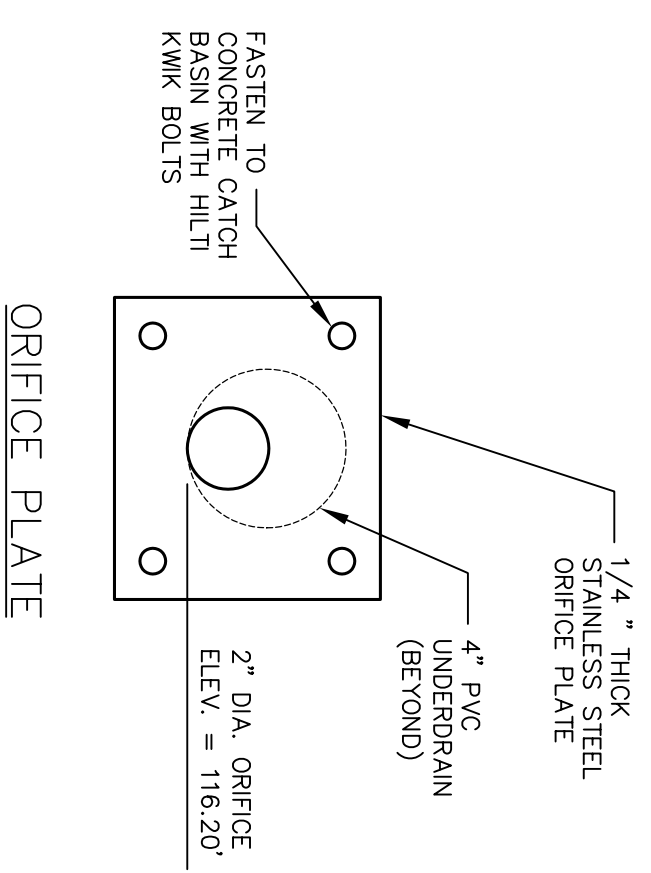
SC-310 TECHNICAL DETAILS
NOT TO SCALE

- DRAIN MANHOLE NOTES:**
1. MANHOLE FRAME AND GRATE SHALL BE DESIGNED TO WITHSTAND HS-20 LOADING.
 2. ACCESS LADDER WITH PRECAST DROP FRONT STEEL REINFORCED COPOLYMER RUNGS AT 12" O.C.
 3. LABARON STANDARD FRAME AND COVER SET IN MORTAR. CAT NO LK 110 SET ON TOP OF BRICK MASONRY AND SEALED WITH MORTAR. COVER TO BE SUPPLIED WITH 3" LETTERING TO READ "DRAIN".
 4. WEIR PLATE SHALL BE HYDRAULICALLY SEALED ON BOTTOM AND BOTH SIDES WITH NON-SHRINK GROUT (OR OTHER APPROVED MATERIAL).



DMH-1 DETAIL
NOT TO SCALE

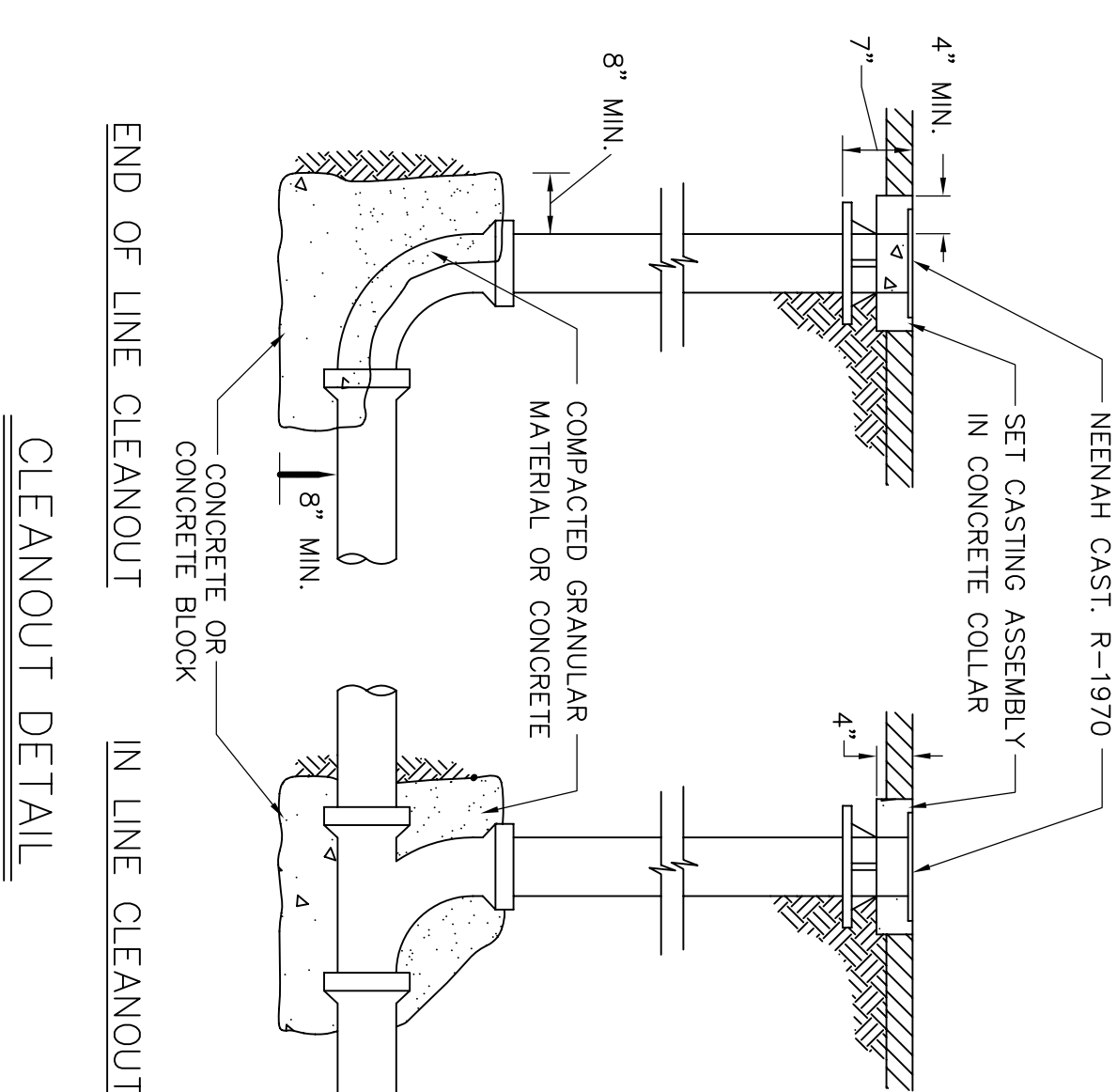
NOTE: STRUCTURE TO BE DESIGNED TO WITHSTAND HS-20 LOADING



ORIFICE PLATE

THIS PLAN IS FOR SITE BIDDING AND CONSTRUCTION. OFF-SITE IMPROVEMENTS SHALL BE BID SEPARATELY.

NOTE:
 CLEANOUT TOP SHALL BE ENCLOSED IN CASTING AND/OR FABRICATED COVER ASSEMBLY.



CLEANOUT DETAIL
N.T.S.

Revised	By	Date	Change

PROJECT NUMBER: 32054	ACAD FILE: 32054-10-DET.DWG	SCALE: AS NOTED	DATE: JUNE 28, 2010
CONSTRUCTION DETAILS - SHEET 3			
Drawn by:	Checked by:		
ECO CAPITAL, LLC			
19 WEE ROAD, CHEE ELIZABETH, ME 04107			
Prepared for:			
ECO CAPITAL, LLC C/O PAUL LEDMAN			
19 WEE ROAD, CHEE ELIZABETH, ME 04107			

PAUL LEDMAN
 LICENSE NO. 19040
 STATE OF MAINE

Northeast Civil Solutions
 INCORPORATED

SURVEYING ENGINEERING LAND PLANNING

153 US ROUTE 1, SCARBOROUGH, MAINE 04074

Tel: 207.883.1000 Fax: 207.883.1001
 Email: info@northeastcivilsolutions.com