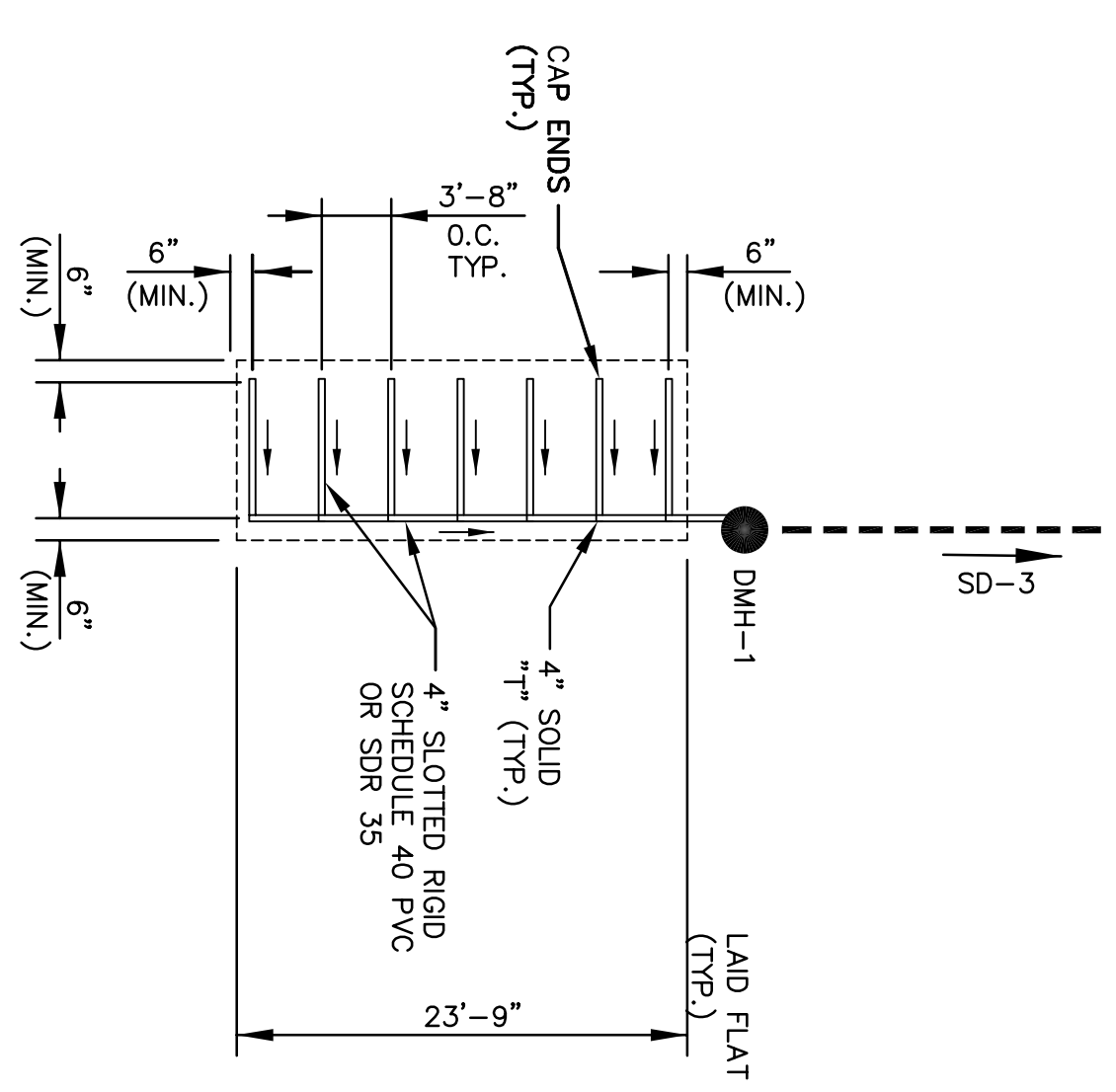
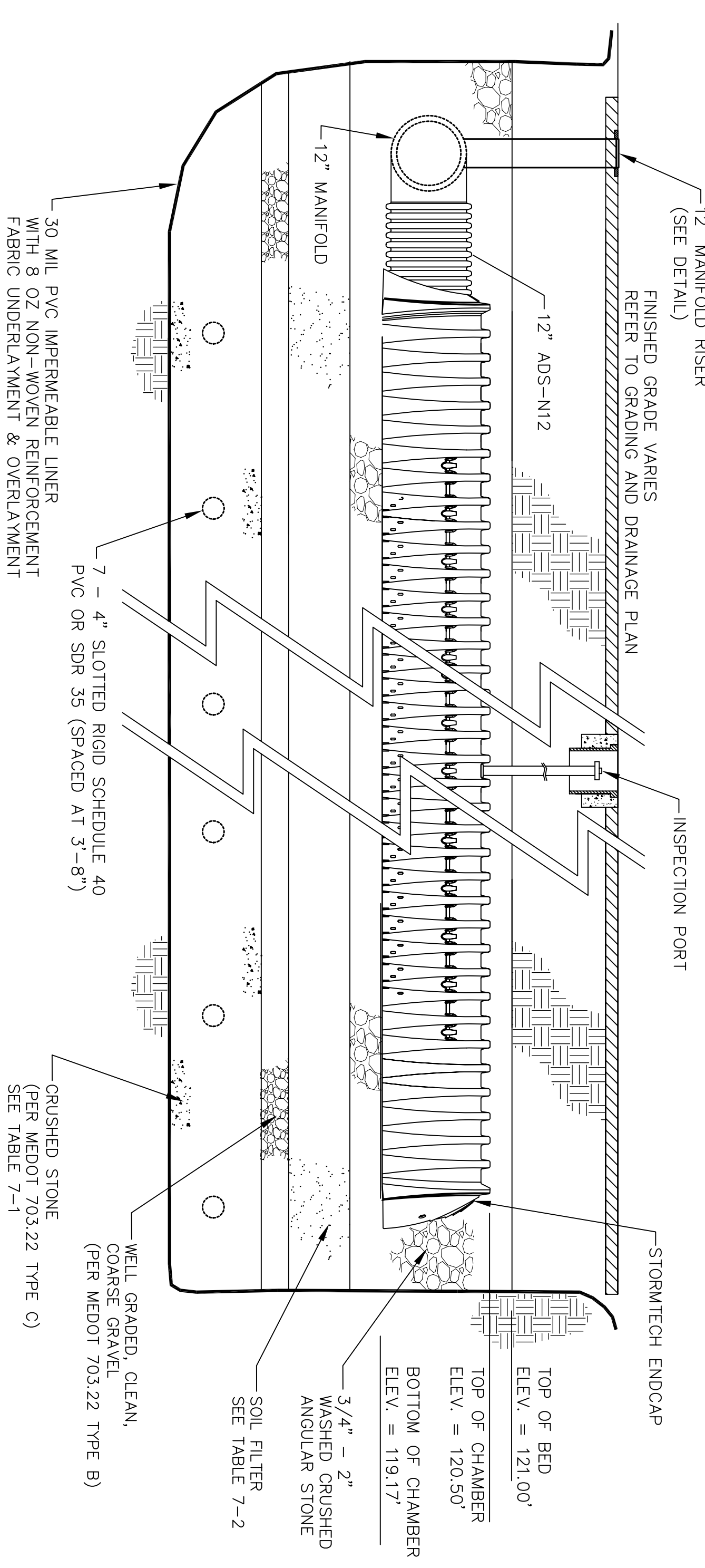


UNDERGROUND DETENTION
SCALE: 1" = 10'



UNDERDRAIN DETAIL
SCALE: 1" = 10'

- NOTES:
1. MANHOLE FRAME AND GRATE SHALL BE DESIGNED TO WITHSTAND H-20 LOADING.
 2. ACCESS LADDER WITH PRECAST DROP FRONT STEEL REINFORCED COPOLYMER RUNGS AT 12" O.C.
 3. LABARON STANDARD FRAME AND GRATE SHALL BE DESIGNED TO WITHSTAND H-20 LOADING. MASONRY AND SEALED WITH MORTAR COVER TO BE SUPPLIED WITH 3" LETTERING TO READ "DRAIN".



SECTION A-A
NOT TO SCALE

- NOTES:
1. ALL DESIGN SPECIFICATIONS FOR STORMTECH CHAMBERS SHALL BE IN ACCORDANCE WITH THE STORMTECH DESIGN MANUAL.
 2. THE INSTALLATION OF STORMTECH CHAMBERS SHALL BE IN ACCORDANCE WITH THE LATEST STORMTECH INSTALLATION INSTRUCTIONS.
 3. THE CONTRACTOR IS ADVISED TO REVIEW AND UNDERSTAND THE INSTALLATION INSTRUCTIONS PRIOR TO BEGINNING SYSTEM INSTALLATION. CALL 1-888-892-5694 OR VISIT WWW.STORMTECH.COM TO RECEIVE A COPY OF THE LATEST STORMTECH INSTALLATION INSTRUCTIONS.

THIS PLAN IS FOR SITE BIDDING AND CONSTRUCTION.
OFF-SITE IMPROVEMENTS SHALL BE BID SEPARATELY.

UNDERGROUND STORMTECH CHAMBER NOTES:

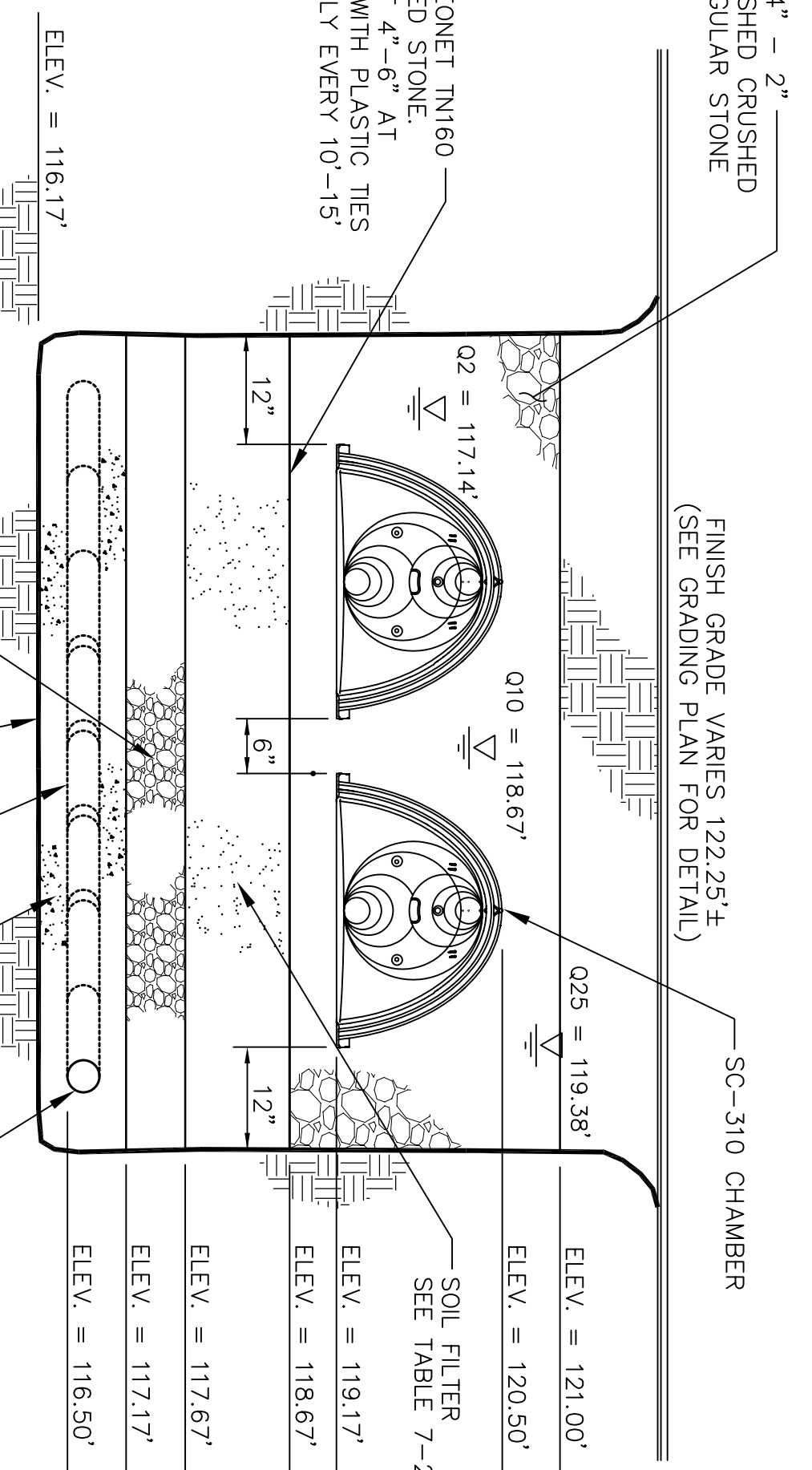
1. THE SITE WORK CONTRACTOR SHALL EMPLOY A QUALIFIED GEOTECHNICAL ENGINEER TO INSPECT AND CERTIFY THE STORMTECH CHAMBER DESIGN AND CONSTRUCTION. THE STORMTECH CHAMBER DESIGN AND CONSTRUCTION SHALL BE MADE AND SUBMITTED TO THE TOWN ENGINEER AT THE COMPLETION OF THE FIELD CONSTRUCTION. THE GEOTECHNICAL ENGINEER SHALL CERTIFY TO THE TOWN ENGINEER THAT THE RAIN GARDEN AND UNDERDRAINED STORMTECH CHAMBER SYSTEM WERE CONSTRUCTED IN ACCORDANCE WITH THE PLANS, INCLUDING ANY APPROVED CHANGES.
2. THE SITE WORK CONTRACTOR SHALL EMPLOY THE SERVICES OF AN INDEPENDENT SOIL TESTING LABORATORY TO SAMPLE AND TEST THE NATIVE SOIL UNDERLYING THE FILTER FIELD. THE SOIL FILTER MATERIAL, AND THE UNDERRAIN BACKFILL MATERIAL DESIGNATED FOR USE IN THE RAIN GARDEN AND UNDERDRAINED STORMTECH CHAMBER SHALL BE TESTED IN ACCORDANCE WITH THE TEST PROTOCOL BY THE GEOTECHNICAL ENGINEER.
3. COPIES OF ALL TEST REPORTS SHALL BE SUBMITTED TO THE TOWN ENGINEER.
4. THE SITE WORK CONTRACTOR SHALL BE SOLELY RESPONSIBLE FOR THE CONSTRUCTION AND MAINTENANCE OF THE RAIN GARDEN AND UNDERDRAINED STORMTECH CHAMBER SYSTEM, AND FOR MAINTENANCE AND PROTECTION OF THESE FACILITIES UNTIL APPROVAL AND ACCEPTANCE BY THE GEOTECHNICAL ENGINEER.

SAND FILTER SPECIFICATIONS:

1. SAND MATERIAL TO HAVE UNIFORM MIX, FREE OF STONES, STUMPS, ROOTS OR OTHER OBJECTS LARGER THAN 2".
2. CLAY CONTENT BETWEEN 8% AND 10% FINES PASSING THE #200 SIEVE AND MEET REQUIREMENTS OF TABLE 7-2.
3. DO NOT OVER COMPACT SOIL MEDIA. PERMEABILITY OF FILTER WILL DECREASE IF OVER COMPACTED. ANTICIPATED LEVEL OF COMPACTION IS EQUAL TO 92-95% PROCTOR.
4. SYSTEM TO DRAIN WITHIN 24-48 HOURS.

TABLE 7-3
ME DOT SPECIFICATIONS FOR AGGREGATE (ME DOT #703.01)

AGGREGATE	ME DOT #	% BY WEIGHT
3/8"	100	
#4	95-100	
#8	80-100	
#16	50-85	
#30	25-60	
#60	10-30	
#100	2-10	
#200	0-5	



SECTION B-B
NOT TO SCALE

TABLE 7-2
SOIL FILTER MEDIA (OPTION 1)

FILTER MEDIA	MIXTURE BY VOLUME	SPECIFICATION
SAND	50%-55%	ME DOT SPECIFICATION #703.01 FINE AGGREGATE FOR CONCRETE (SEE TABLE 7-3)
TOPSOIL	20%-30%	LOAMY SAND TOPSOIL WITH MINIMAL CLAY CONTENT WITH BETWEEN 15%-20% FINES PASSING THE #200 SIEVE
MULCH	20%-30%	MODERATELY FINE, SHREDDED BARK OR WOOD FIBER MULCH WITH ME DOT #703.01 FINES PASSING THE #200 SIEVE

TABLE 7-1
ME DOT SPECIFICATIONS FOR UNDERDRAINS (ME DOT #703.22)

SIEVE SIZE	% BY WEIGHT
1"	90-100
1/2"	75-100
#4	50-100
#20	15-80
#60	0-15
#200	0-5

FILTER MEDIA SHALL CONSIST OF SLT/SAND LAYER WITH A FINES CONTENT OF 8% BUT NOT GREATER THAN 10% (I.E. 8%-10% PASSING #200 SIEVE)

TYPE B COARSE GRAVEL SHALL HAVE NO MORE THAN 5% (PREFERABLY 2%) OF FINES PASSING THE #200 SIEVE

PROJECT NUMBER: 32054

ADAD FILE: 32054-06-DET-010 SCALE: AS NOTED DATE: JUNE 28, 2010

CONSTRUCTION DETAILS - SHEET 2

ECO CAPITAL, LLC
19 WE ROAD, CHEE ELIZABETH, ME 04107

ECO CAPITAL, LLC C/O PAUL LEDMAN
19 WE ROAD, CHEE ELIZABETH, ME 04107

Northwest Civil Solutions
153 US ROUTE 1, SCARBOROUGH, MAINE 04074
207.883.1000
207.883.2227