

LIFE SAFETY SYMBOL KEY: REFER TO A5.1 FOR FIRE RATED ASSEMBLIES	
	ONE (1) HOUR PARTITION / BARRIER (1-WAY ONLY)
	ONE (1) HOUR PARTITION / BARRIER (2-WAY)
	TWO (2) HOUR SEPARATION / BARRIER
	EMERGENCY LIGHT

**EXTENT OF UNPROTECTED OPENINGS IN EXTERIOR WALLS CLOSE TO A LOT LINE:**

NORTH-EAST WALL IS BETWEEN 5' & 10' OF LOT LINE  
ALLOWABLE PERCENTAGE OF UNPROTECTED OPENINGS = 10% (PER IBC TABLE 704.8)

AREA OF NORTH-EAST ELEVATION	= 1,840 SF
AREA OF UNPROTECTED WINDOWS	= +/- 90 SF
AREA OF UNPROTECTED VENTS	= +/- 10 SF
AREA OF UNPROTECTED OPENINGS	= +/- 100 SF
UNPROTECTED PERCENTAGE OF WALL	= +/- 5.5%

**LIFE SAFETY NOTES:**

BUILDING OCCUPANCY: R2 (3 unit residential, non-townhouse)

BUILDING CODES: IRC-2003, NFPA-101

FLOOR AREA:  
Basement = 1,820 SF  
1st. floor = 1,930 SF  
2nd. floor = 1,930 SF  
3rd. floor = 885 SF  
Total area = 6,565 SF (gross enclosed floor area)

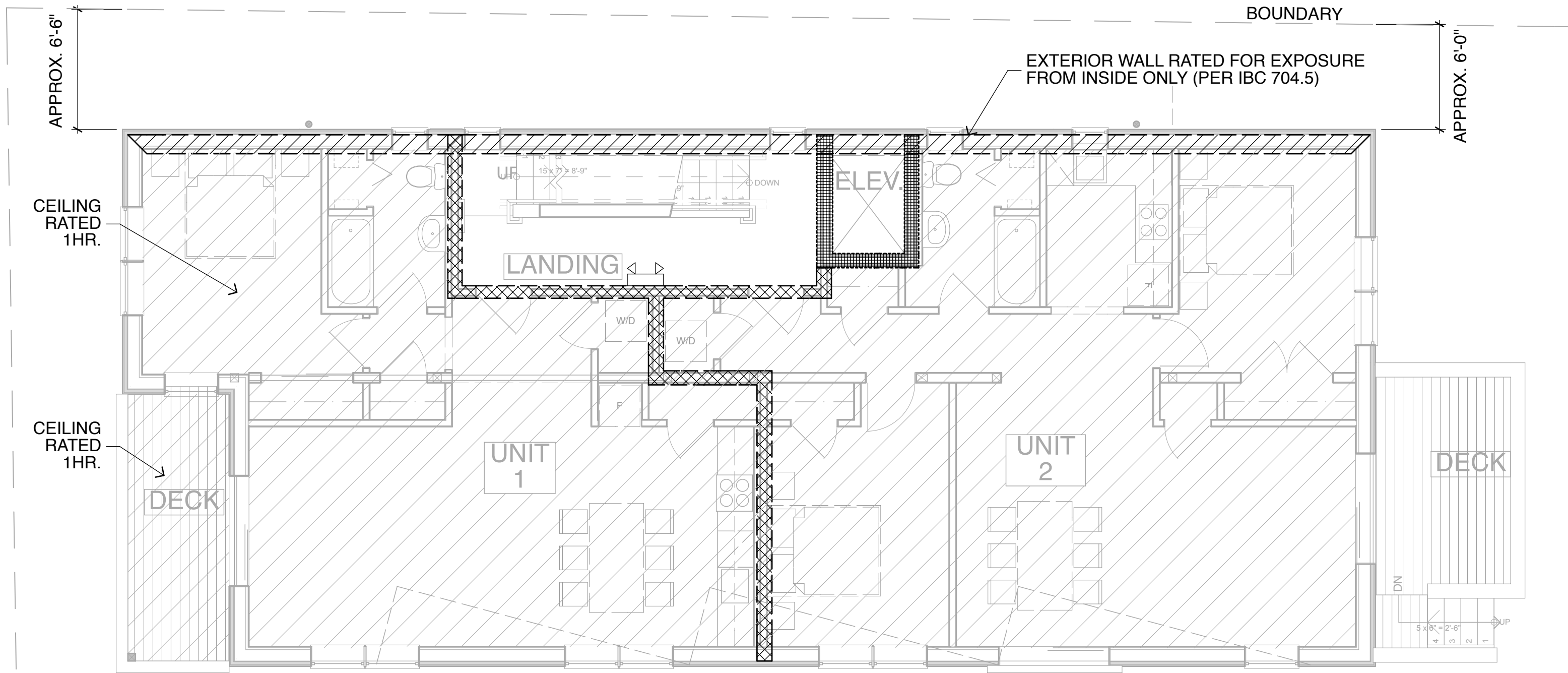
CONSTRUCTION TYPE: Type 5B

SPRINKLERS: Residential 13-R throughout the building

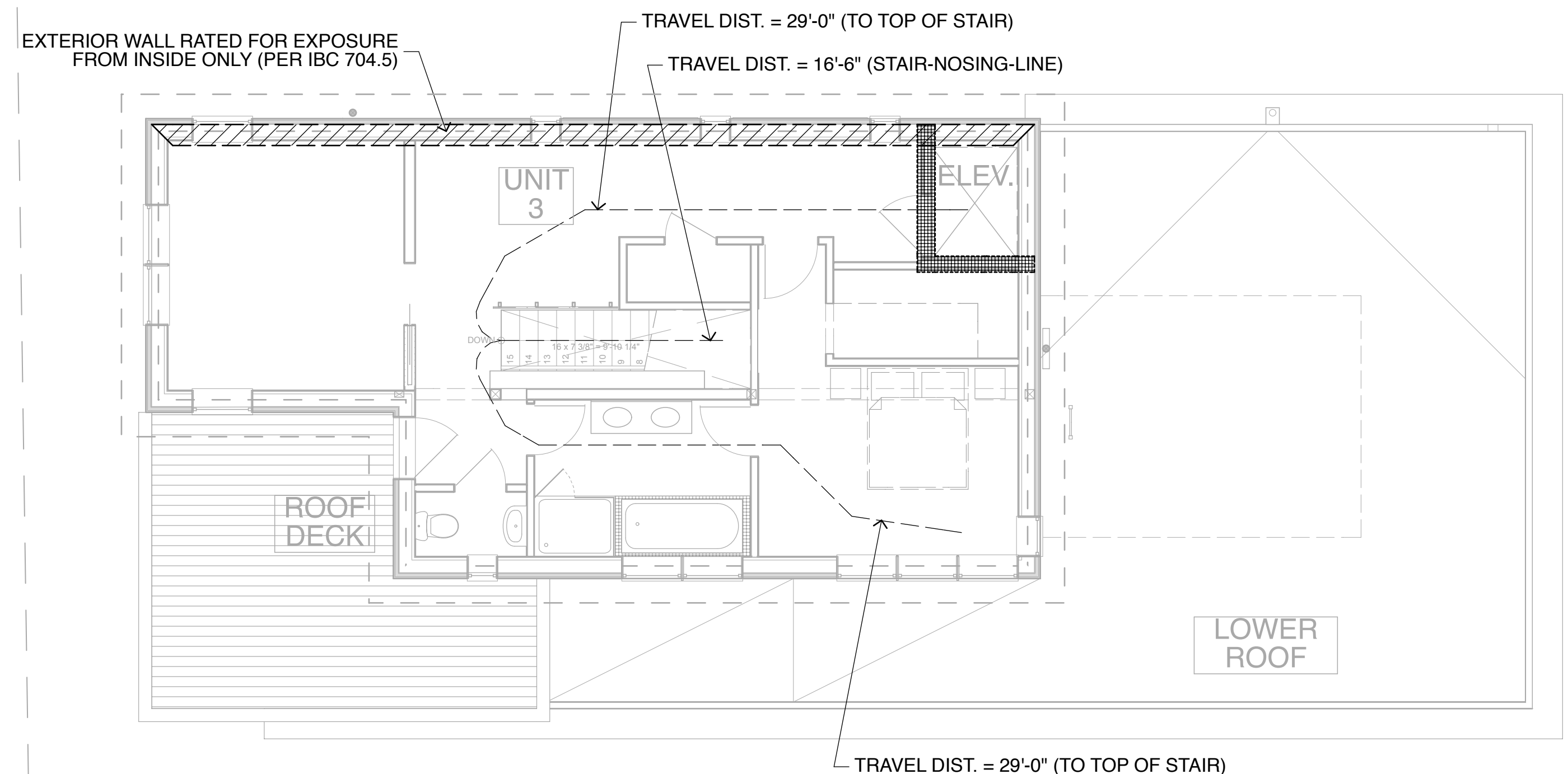
BUILDING HEIGHT: One (1) basement floor below grade plane. Three (3) floors above grade plane  
Highest floor is less than 30' above lowest level of fire department vehicle access

ELEVATOR: Residential - one family only (non-shared use)  
In-line geared drive elevator, 36"x60" car size, load capacity 950#, speed 40 FPM

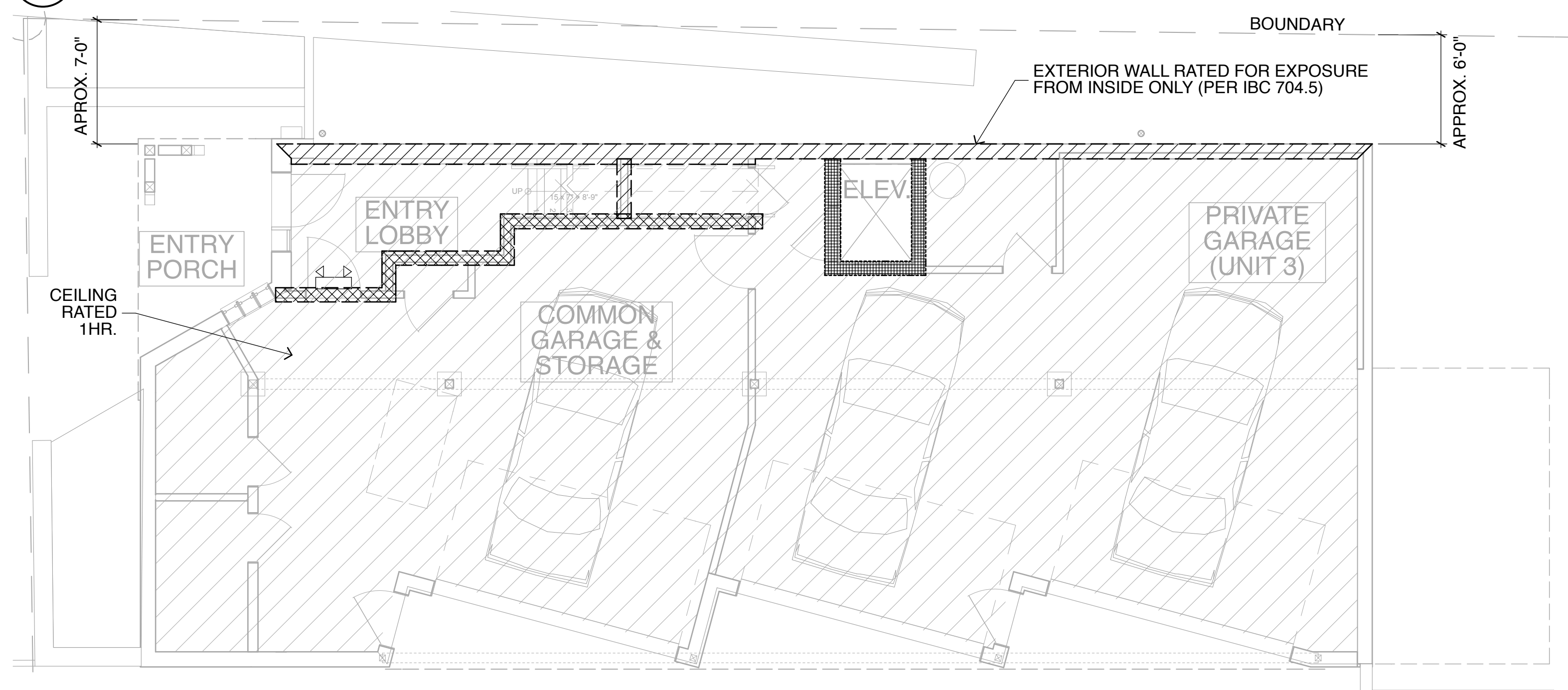
NUMBER OF EXITS: Building with one exit



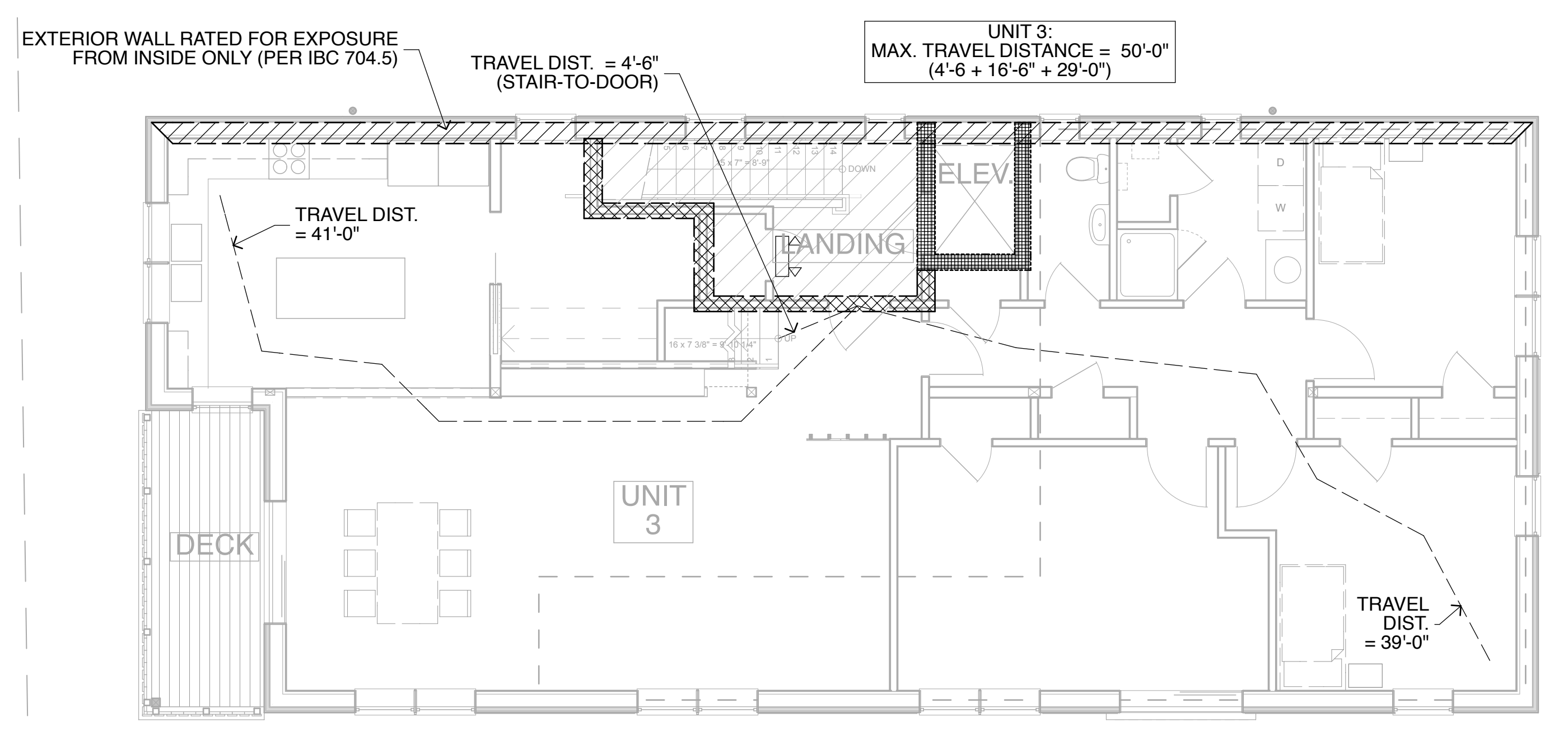
**2 1st. floor plan**  
SCALE: 3/16" = 1'-0"



**4 3rd. floor plan**  
SCALE: 3/16" = 1'-0"



**1 Basement plan**  
SCALE: 3/16" = 1'-0"



**3 2nd. floor plan**  
SCALE: 3/16" = 1'-0"