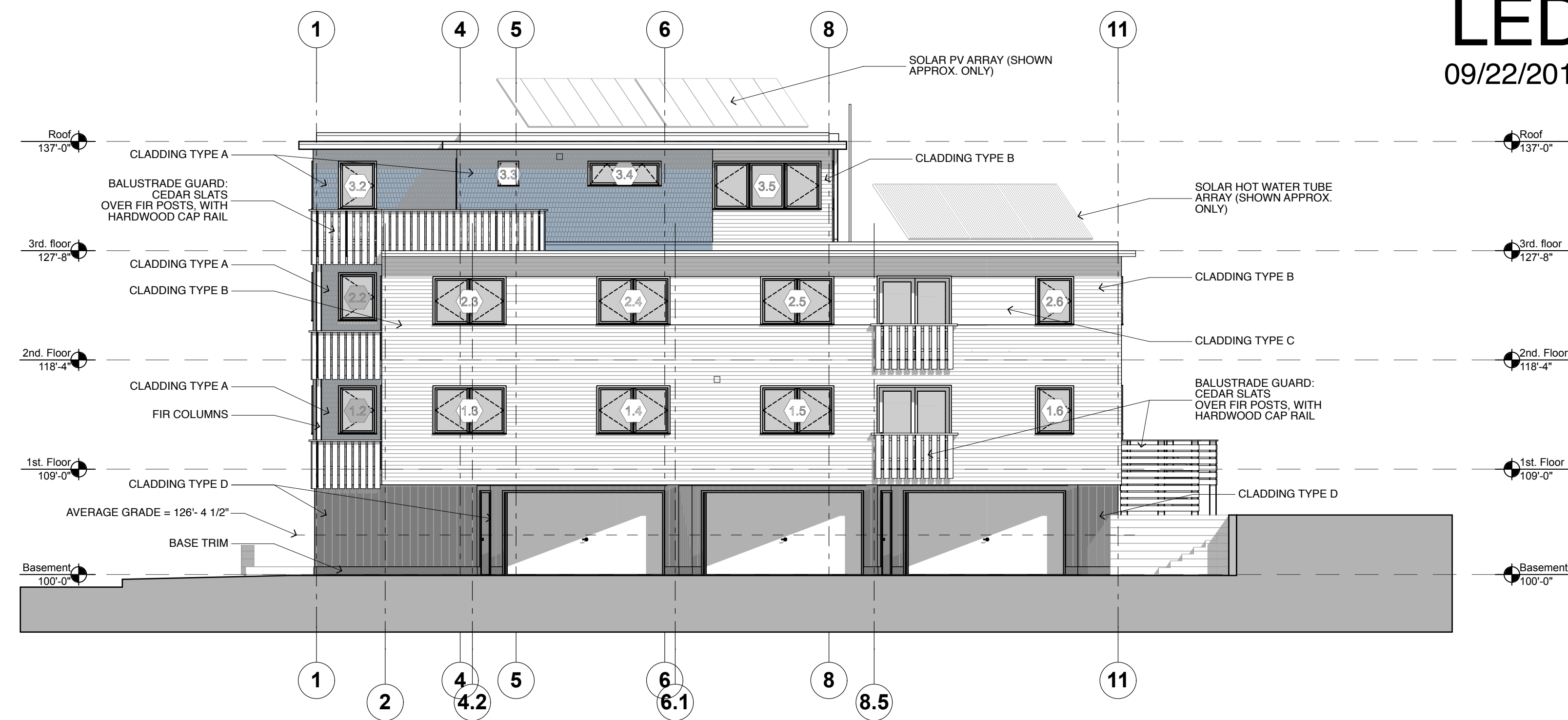
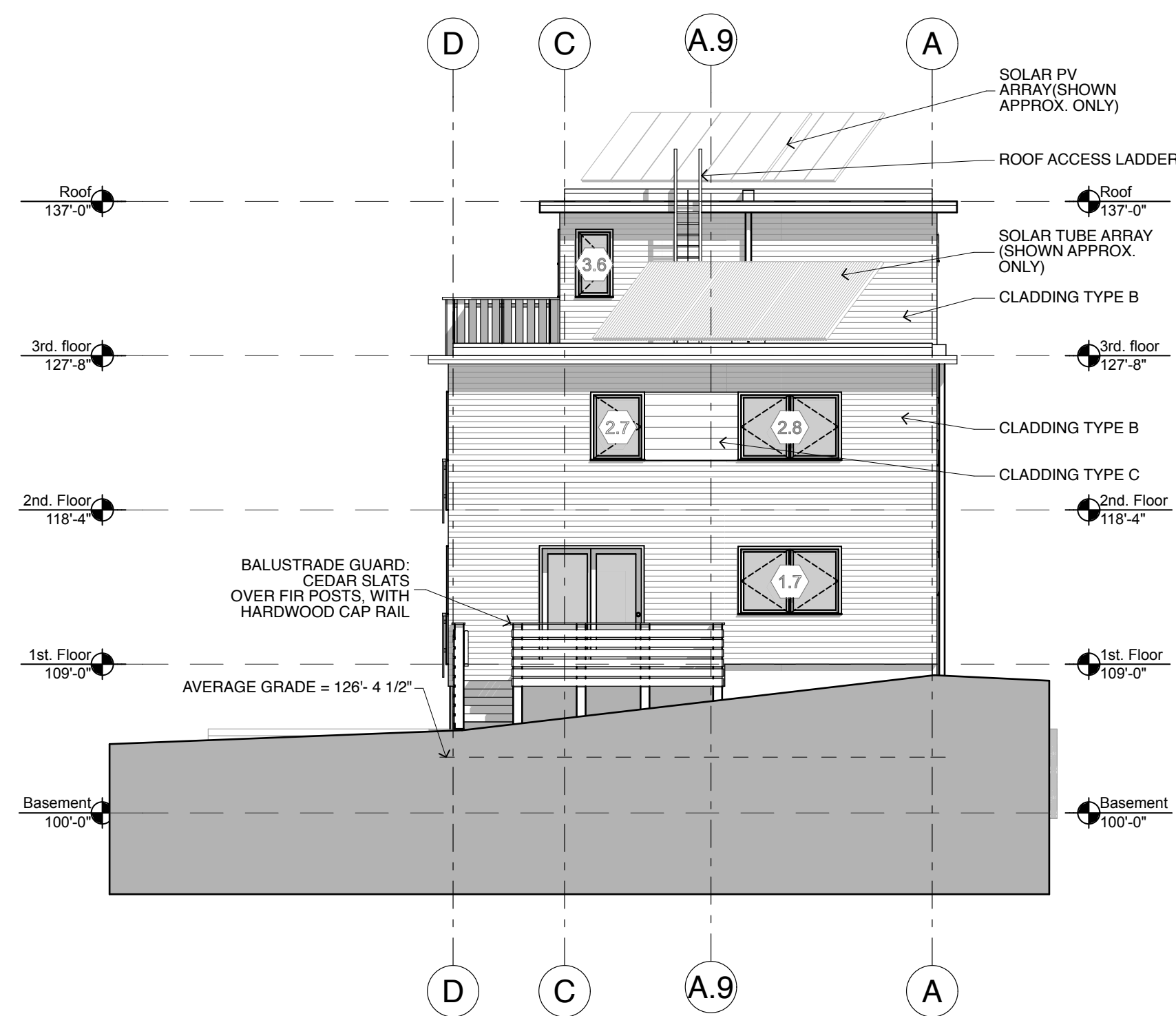


1 North-West Elevation (Cumberland Street)  
SCALE: 1/8" = 1'-0"

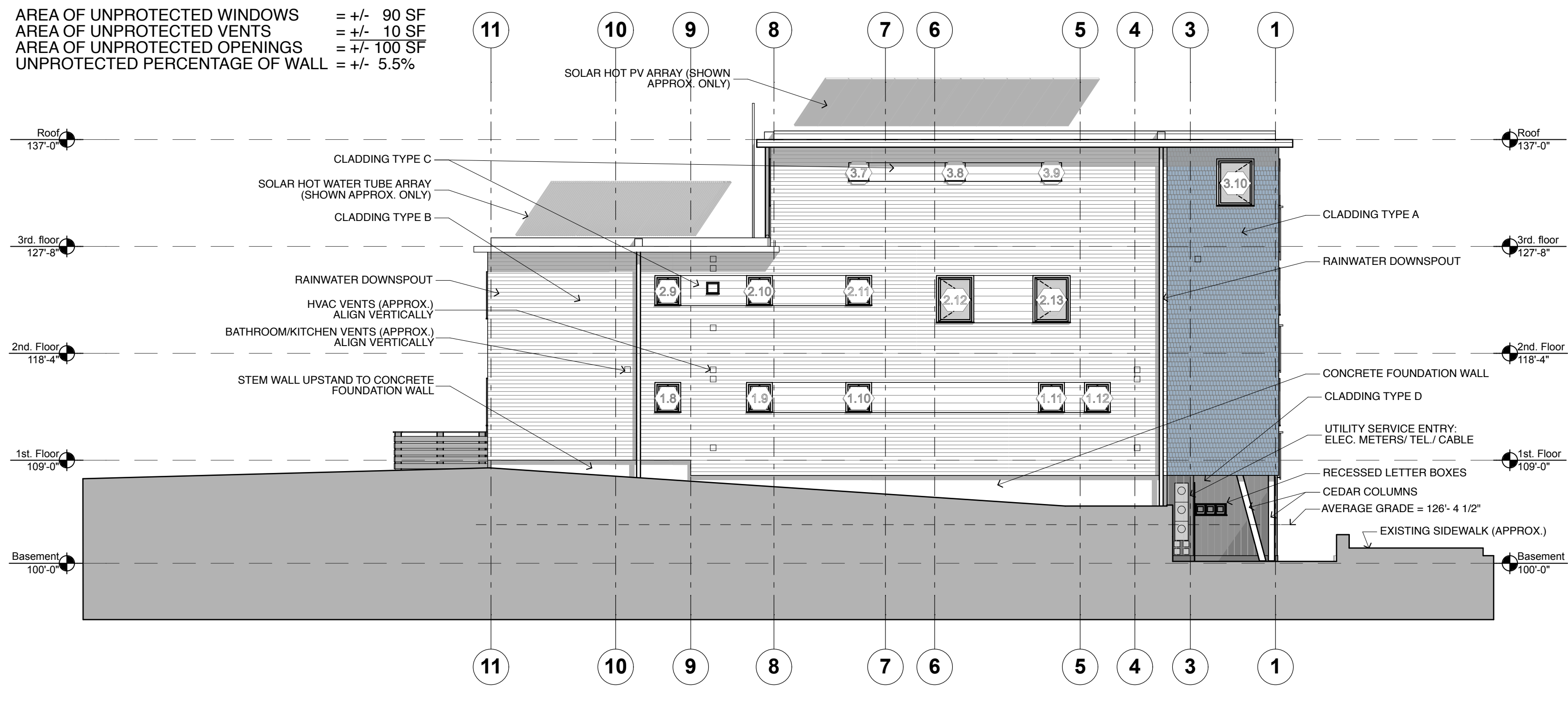


2 South-West Elevation  
SCALE: 1/8" = 1'-0"

EXTENT OF UNPROTECTED OPENINGS IN EXTERIOR WALLS CLOSE TO A LOT LINE:  
NORTH-EAST WALL IS BETWEEN 5' & 10' OF LOT LINE  
ALLOWABLE PERCENTAGE OF UNPROTECTED OPENINGS = 10% (PER IBC TABLE 704.8)  
AREA OF NORTH-EAST ELEVATION = 1,840 SF  
AREA OF UNPROTECTED WINDOWS = +/- 90 SF  
AREA OF UNPROTECTED VENTS = +/- 10 SF  
AREA OF UNPROTECTED OPENINGS = +/- 100 SF  
UNPROTECTED PERCENTAGE OF WALL = +/- 5.5%



3 South-East Elevation  
SCALE: 1/8" = 1'-0"



4 North-East Elevation  
SCALE: 1/8" = 1'-0"

CLADDING NOTES:

- CLADDING TYPE A: 7-INCH STRAIGHT EDGE POLYMER SHINGLES CERTAINTED "CEDAR IMPRESSIONS", "PERFECTION" SHINGLES WITH MITERED CORNERS, OR SIMILAR. COLOR: "PACIFIC BLUE"
- CLADDING TYPE B: 4-INCH WOODGRAIN VINYL CLAPBOARDS CERTAINTED "MAINSTREET", OR SIMILAR. COLOR: "GRANITE GREY"
- CLADDING TYPE C: 8-INCH WOODGRAIN VINYL CLAPBOARDS CERTAINTED "MAINSTREET", OR SIMILAR. COLOR: "COLONIAL WHITE"
- CLADDING TYPE D: 8-INCH VERTICAL REVERSE BOARD & BATTEN CERTAINTED CEMENT FIBER, OR SIMILAR. COLOR: "IRON GRAY"

GRADE PLANE CALCULATION:

CORNER 1:	131'-4"	GRADE PLANE = 126'-4 1/2"
CORNER 2:	128'-0"	
CORNER 3:	123'-0"	
CORNER 4:	123'-2"	
TOTAL:	505'-6"	