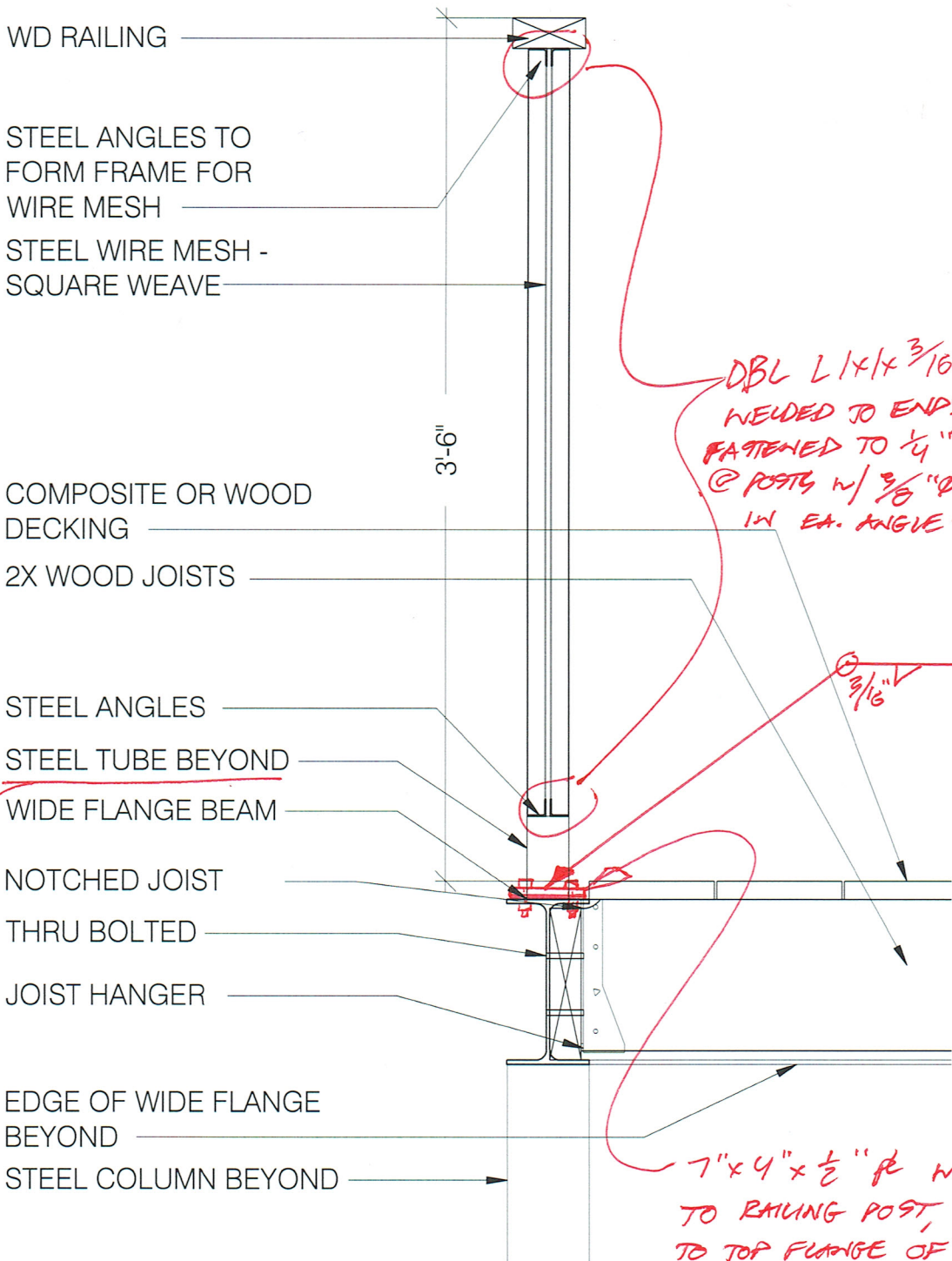


ALL STEEL AND BOLTS GAW. -TYP.



DBL L 1x1x 3/16 MIN. WELDED TO ENDS, OR FASTENED TO 1/4" TAB @ POSTS W/ 5/8" Ø BOLT IN EA. ANGLE -TYP.

3/16" -TYP. @ POSTS

MIN. HSS 2x2x 1/4 OR 2" Ø STD. PIPE -TYP.

7" x 4" x 1/2" PL WELDED TO RAILING POST, BOLTED TO TOP FLANGE OF BEAM W/ (4) 5/8" Ø GAW. THRU BOLTS -TYP.

TYP. RAILING/POST

8/8