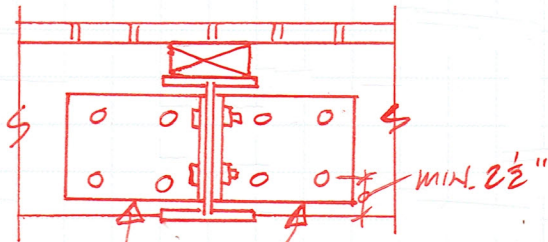
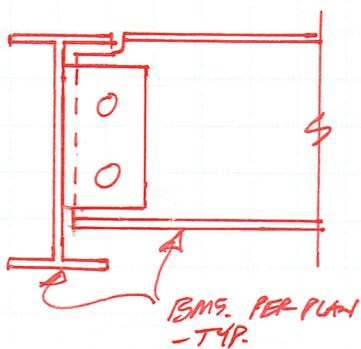


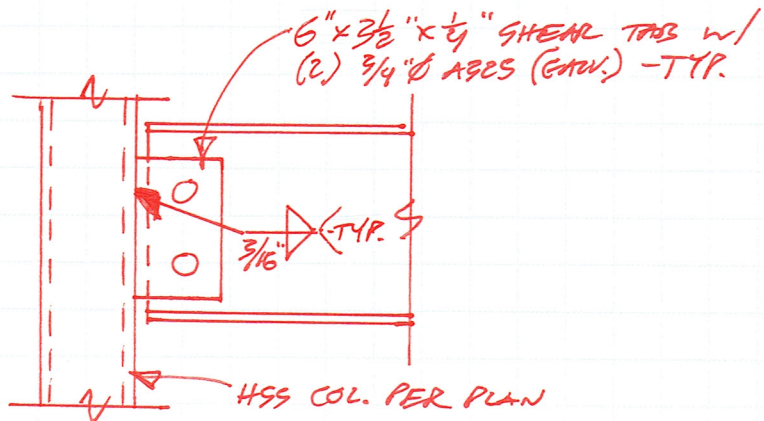
77 Oak Street, Portland, ME 04101 | p. 207-774-4614 | f. 866-793-7835



GEN. L6x3 1/2 x 5/16 w/ (4) 5/8" ϕ THRU
BOLTS @ EA. CUP, THRU (W) LEDGER
AND (E) RIM. VERIFY (E) RIM IN
FIELD IS MIN. 1 1/2" THICK FULL HEIGHT.



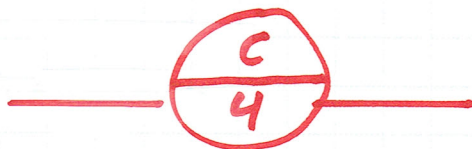
BMS. PER PLAN
-TYP.



6" x 3 1/2" x 1/4" SHEAR TABS w/
(2) 3/4" ϕ AGES (GEN.) -TYP.

3/16" (TYP.)

HSS COL. PER PLAN



TYP. STEEL CONNECTIONS