

S.I. 1/5/17

ALL EXPOSED STEEL  
HOT-DIP GALVANIZED

VERIFY (E) RIM IS MIN.  $1\frac{1}{2}$ "  
THICK AND FULL DEPTH IN FIELD - TYP.

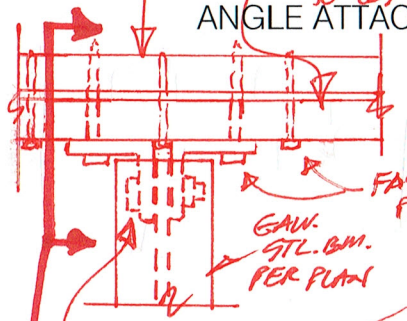
GAW.  $L3\frac{1}{2} \times 3\frac{1}{2} \times \frac{1}{4} \times 6"$   
W/ (3)  $\frac{3}{8}$ " x 4" RSS SCREWS  
THRU CUP. LEDGER, AND (E) RIM,  
EA. SIDE OF (N) STL. BM.

LAST JOIST FASTENED TO (E)  
RIM JOIST W/ MIN. (2) 10d @ 16" O.C.

(E) RIM  
(N) JOIST FASTENED  
TO (E) RIM  
ANGLE ATTACHMENT (TYP)

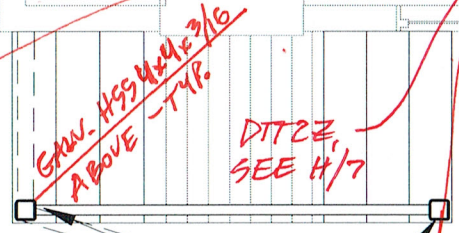
DTTIZ FASTENED TO  
JOIST @ MIDSPAN OF  
STL. BM. W/  $\frac{3}{8}$ "  $\phi$   
GAW. BOLT THRU, DTTIZ,  
P.T. WEB PACKING, AND  
STL. BM. WEB

P.T. 2x8 LEDGER FASTENED TO  
(E) RIM JOIST W/ (2)  $\frac{1}{4}$ "  $\phi$  x  $3\frac{1}{2}$ "  
RSS SCREWS @ 16" O.C.



(2)  $\frac{3}{4}$ "  $\phi$   
BOLTS THRU ANGLE  
CLIPS AND STM. WEB

JOISTS @ 12" O.C. IF  
COMPOSITE DECKING IS  
USED - TYP.



HANGER TO P.T. WEB PACKING - TYP.

COLUMN TO 3RD FLOOR  
COLUMN TO 2ND FLOOR

2X FRAMING

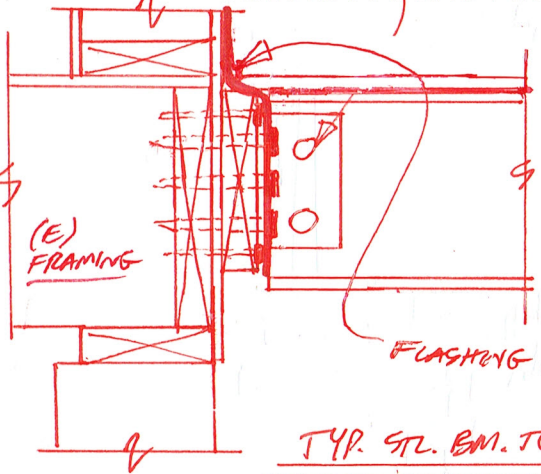
LUS 28-Z - TYP.

DTTIZ, SEE H/7

DECK ABOVE  
STEEL TUBE (TYP)  
WIDE FLANGE BEAMS  
STEEL COLUMN

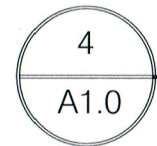
(4) RSS SCREWS IN LEDGER  
@ STM. CONNECTION

(3)  $\frac{1}{4}$ "  $\phi$  TIMBERLOKS THRU JOISTS, FULLY EMBEDDED INTO  
P.T. WEB PACKING @ ACUTE JOIST ANGLE  
TO BEAM



FLASHING PER ARCH - TYP.

TYP. STL. BM. TO (E) RIM



# FIRST FLOOR FRAMING

SCALE: 1/4" = 1'-0"

$\frac{1}{8}$