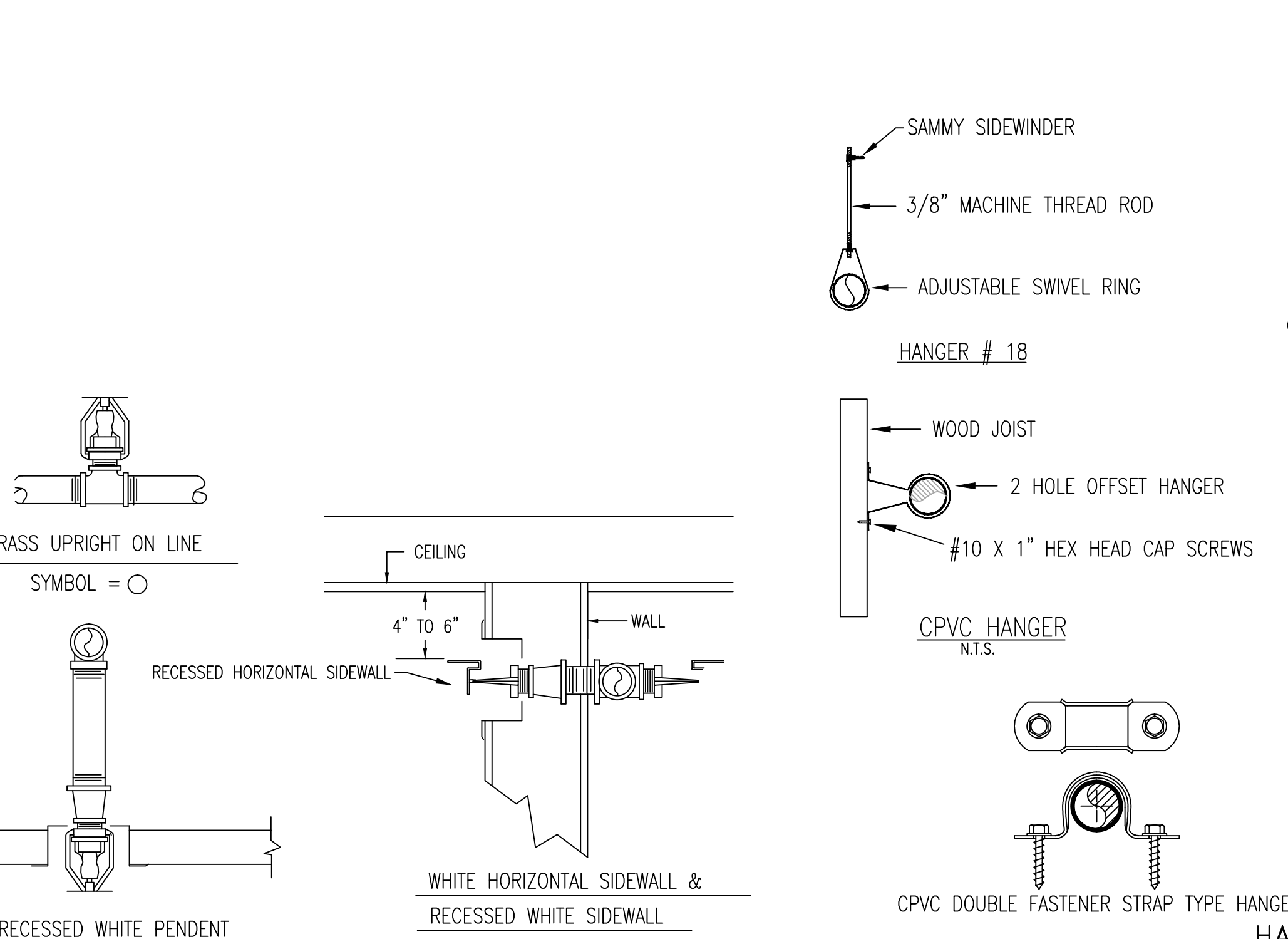
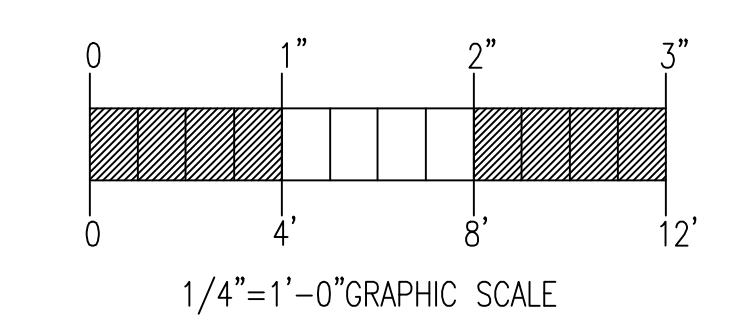
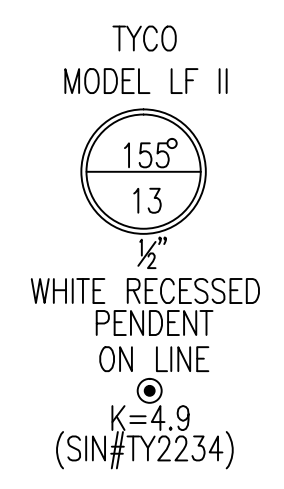
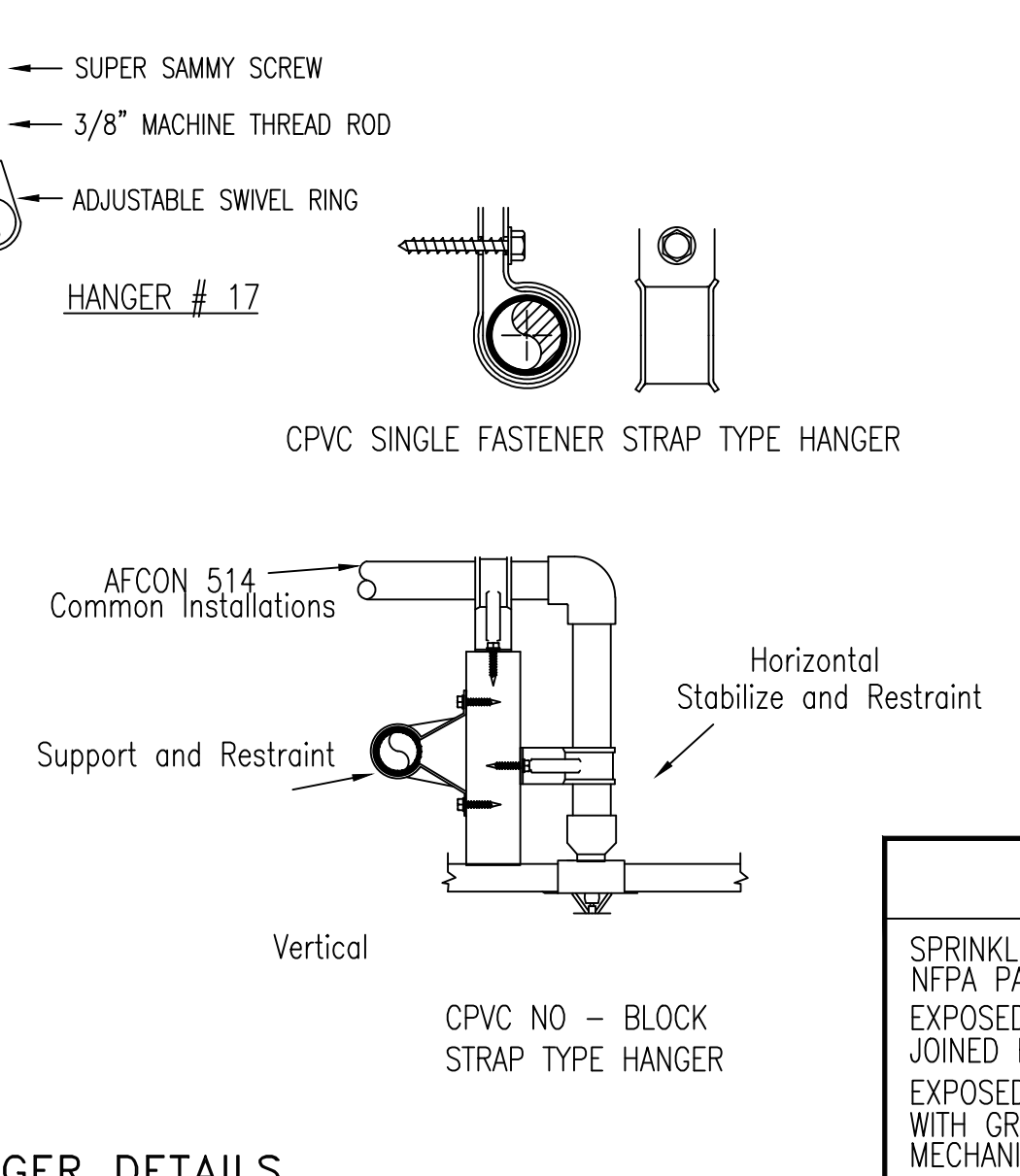


**FIRE SPRINKLER PLAN - THIRD FLOOR**

SCALE: 1/4"=1'-0"  
 AREA PROTECTED: 1,400 SQ.FT.  
 FINISH FLOOR ELEVATION : 128'-7"  
 COLOR



**HEAD DETAILS**  
N.T.S.



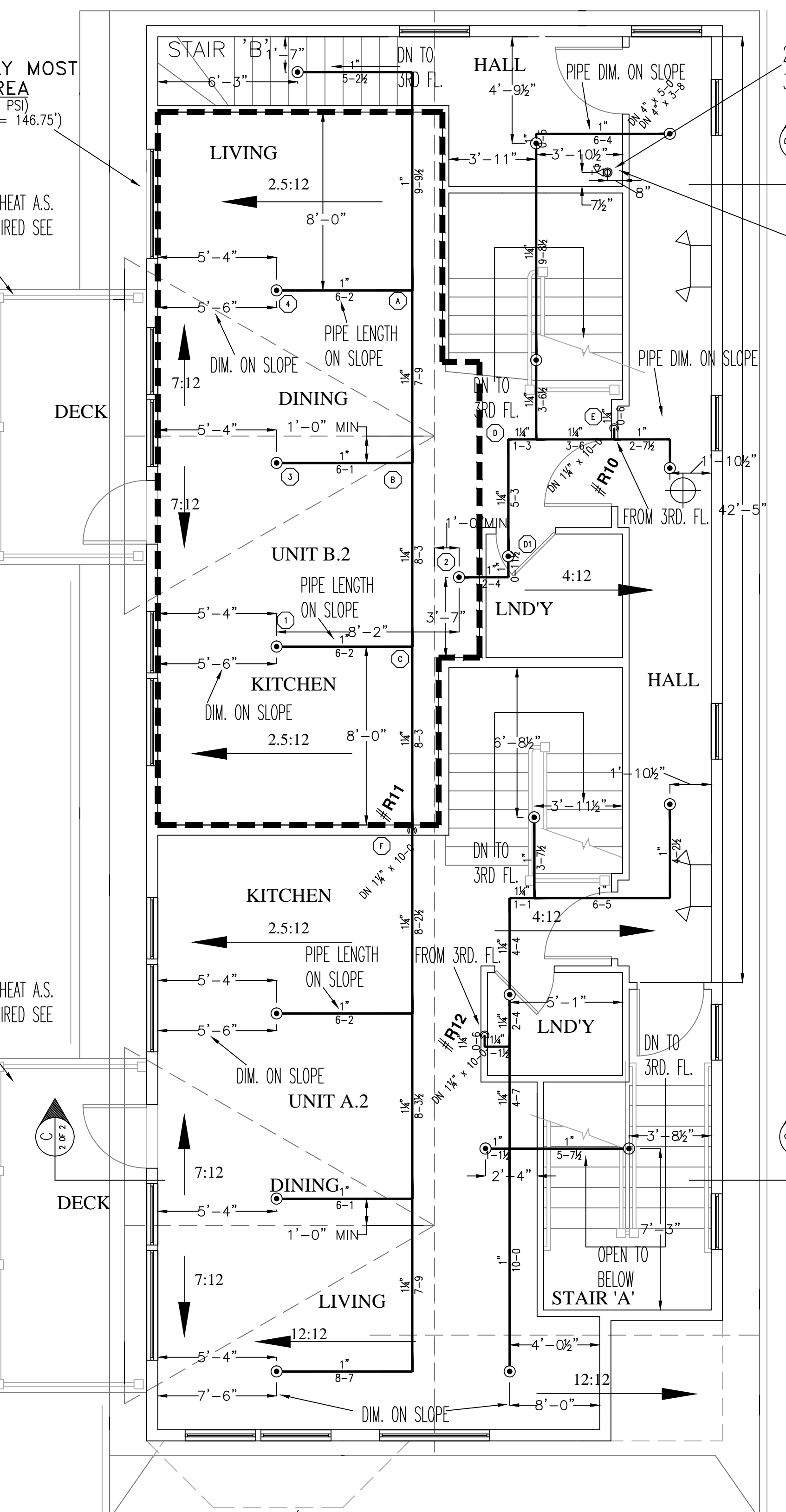
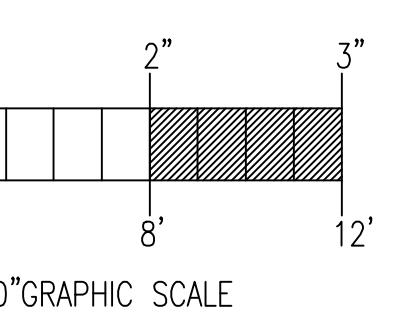
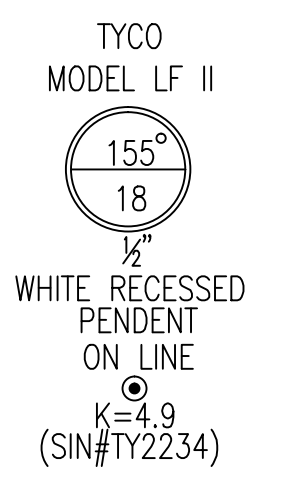
**HANGER DETAILS**  
NOT TO SCALE

ALL HANGERS TO BE PROVIDED AND INSTALLED AS PER NFPA # 13D (2010) 3/8" ROD FOR 1" TO 4" PIPE

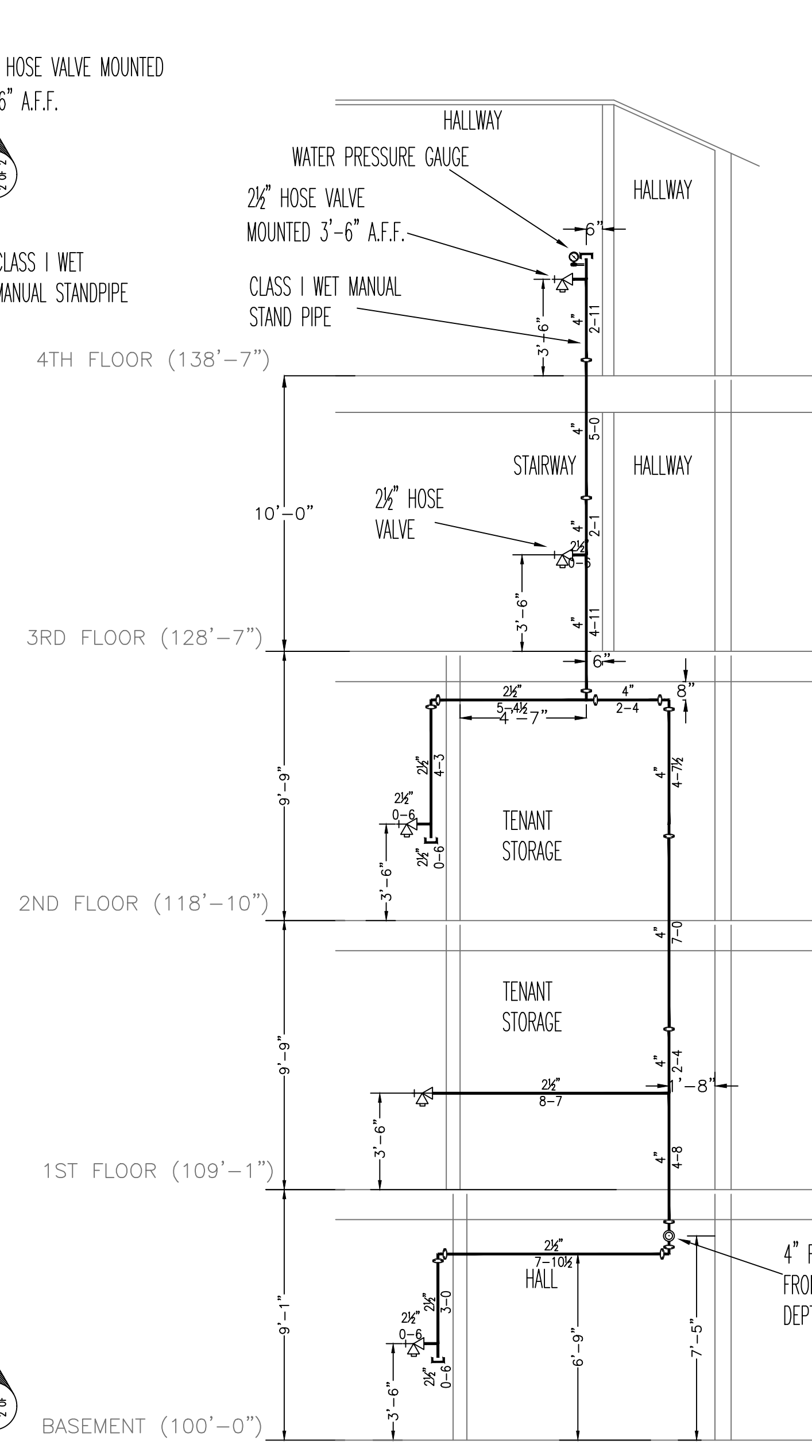
**HYDRAULIC-SYSTEM**  
 THIS BUILDING IS PROTECTED BY A HYDRAULICALLY DESIGNED AUTOMATIC SPRINKLER SYSTEM.  
 LOCATION: **FOURTH FLOOR**  
 NFPA #13R  
 BASIS OF DESIGN:  
 1. GPM PER HEAD 13  
 2. NUMBER OF HEADS CALCULATED 4  
 SYSTEM DEMAND AT BASE:  
 1. WATER FLOW RATE (GPM) 57.35  
 2. RESIDUAL PRESSURE (PSI) 46.66  
 HYDRAULIC DATA NAMEPLATES TO BE MOUNTED AT SYSTEM RISER  
 NOTE: HIGHEST SPRINKLER IS 115.75'  
 ○ = HYDRAULIC REFERENCE POINT

**FIRE SPRINKLER PLAN - FOURTH FLOOR**

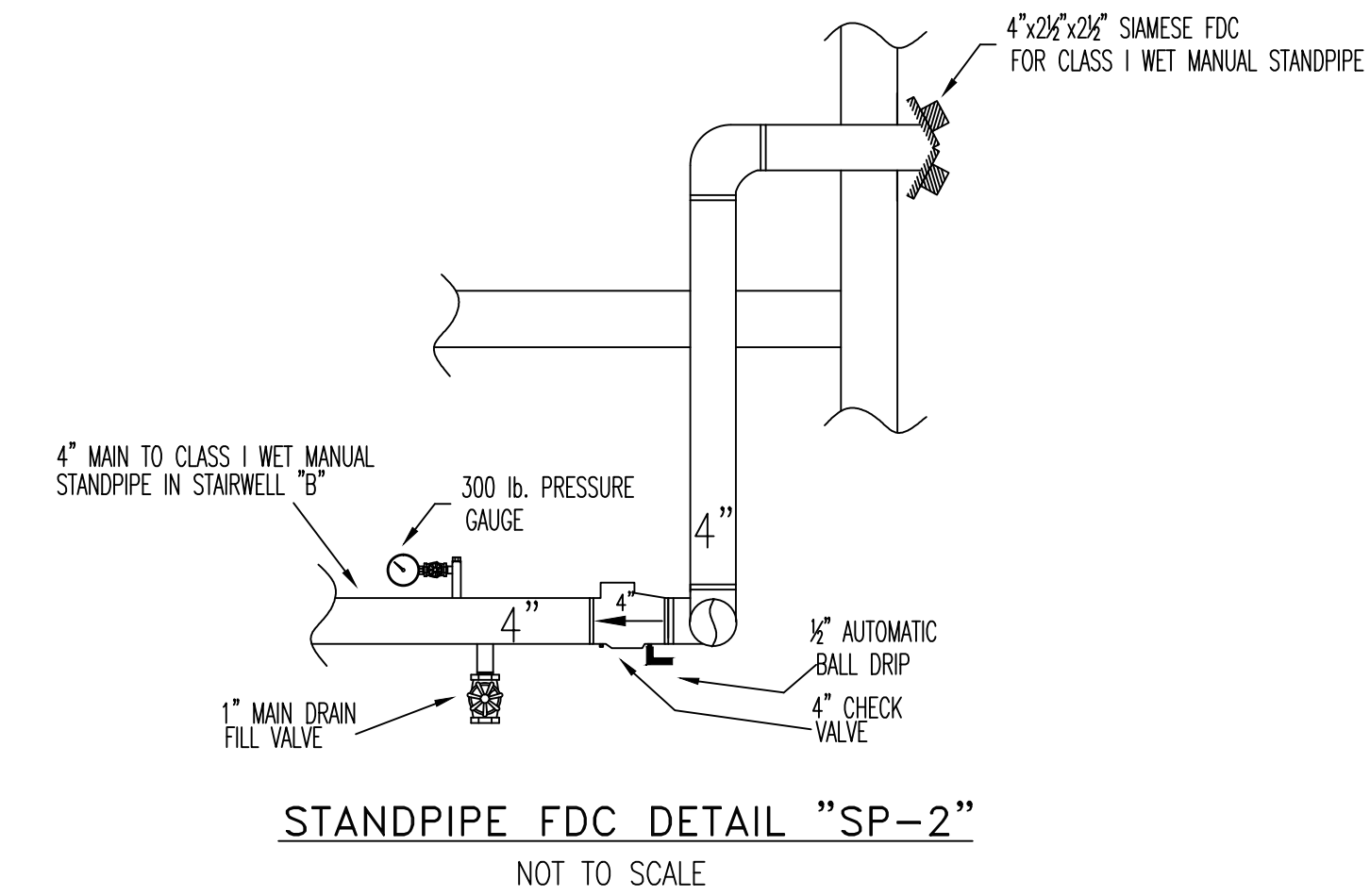
SCALE: 1/4"=1'-0"  
 AREA PROTECTED: 1,400 SQ.FT.  
 FINISH FLOOR ELEVATION : 138'-7"  
 COLOR



(LIVING) HYDRAULICALLY MOST REMOTE AREA  
 (4 HEAD CALC. @ 7.0 PSI)  
 (ELEV. @ HIGHEST HEAD = 146.75')  
 EXTERIOR PORCH, NO HEAT A.S. PROTECTION NOT REQUIRED SEE NOTE "C"  
 CLASS I WET MANUAL STANDPIPE

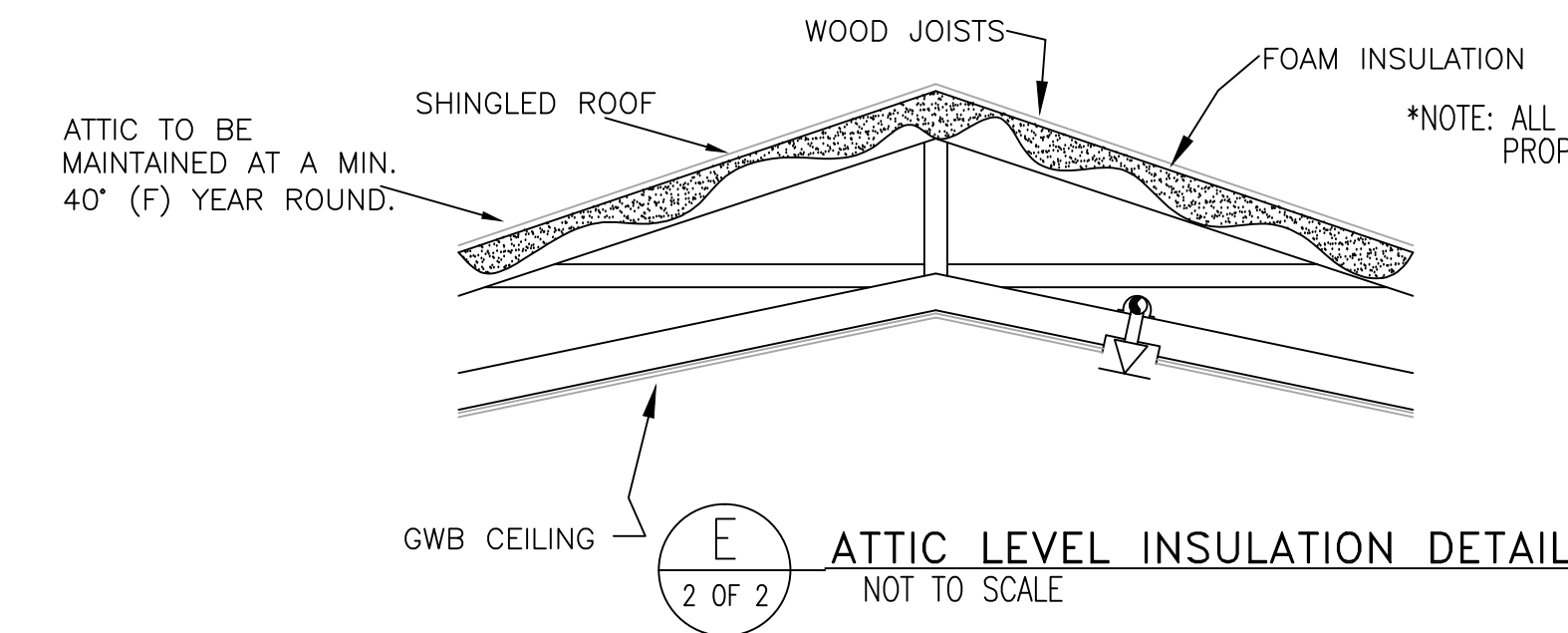


**STAIR SECTION DETAIL "B"**  
SCALE: N.T.S.

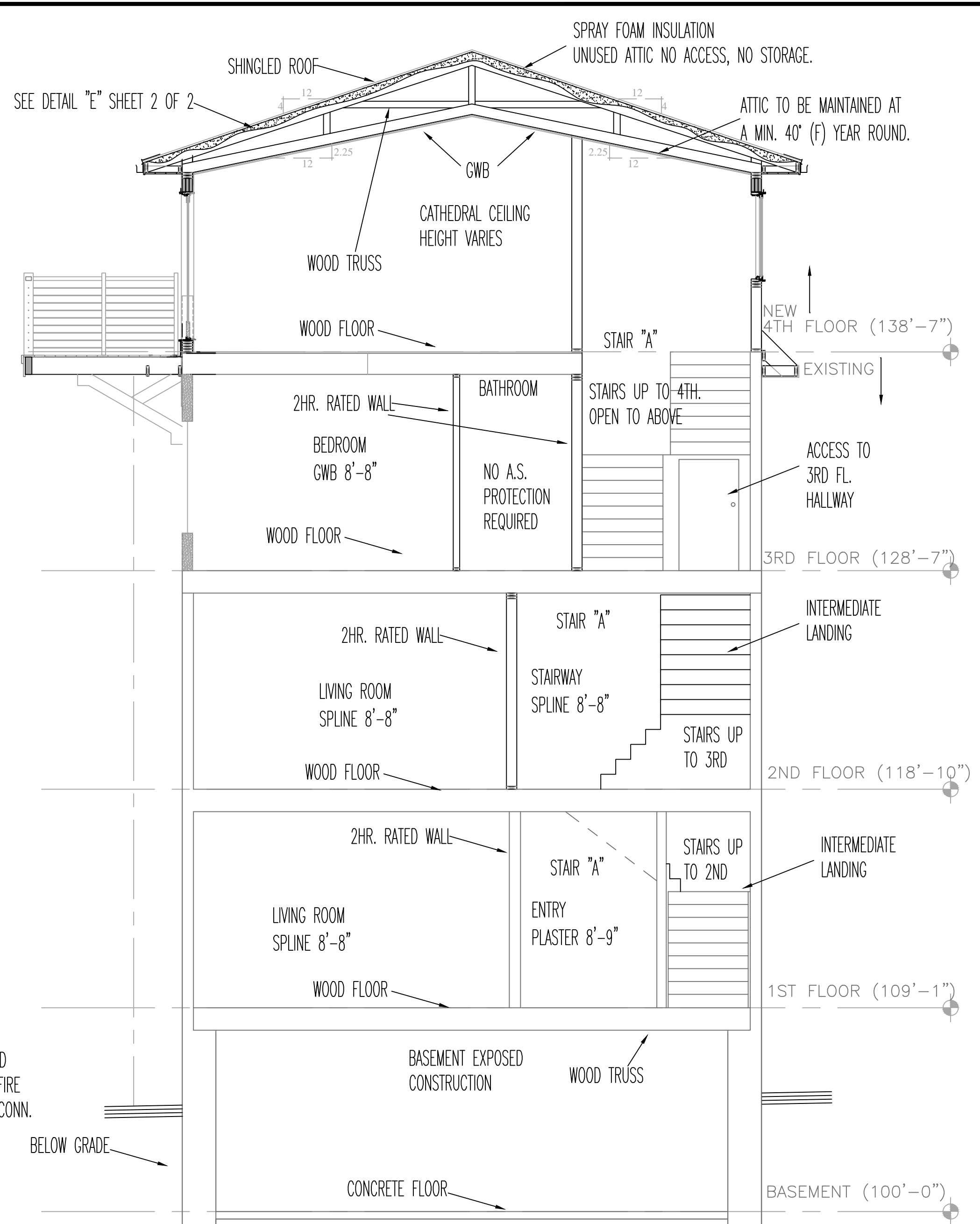


**STANDPIPE FDC DETAIL "SP-2"**  
NOT TO SCALE

NOTE: THIS IS A SUGGESTED METHOD WHICH HAS BEEN USED QUITE OFTEN IN THIS APPLICATION. HOWEVER, EASTERN FIRE PROTECTION CANNOT GUARANTEE THAT PIPING WILL NOT FREEZE. THE OWNER SHOULD CONSULT WITH HIS ENGINEER OR BUILDER TO DETERMINE THAT THERE WILL BE SUFFICIENT HEAT AT THE PIPING (40' MIN) AT ALL TIMES.



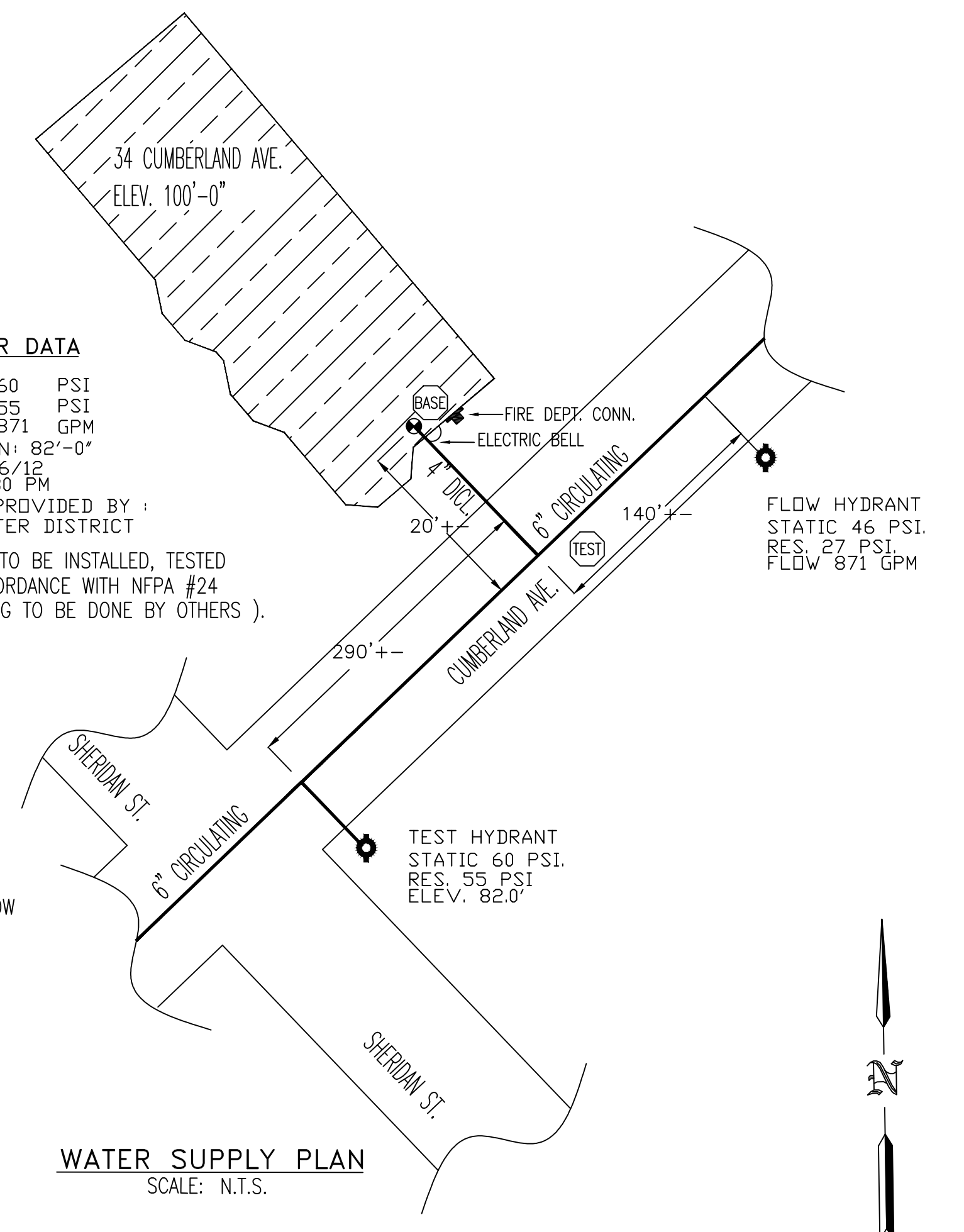
**ATTIC LEVEL INSULATION DETAIL**  
NOT TO SCALE



**BUILDING CROSS SECTION "C-C"**  
SCALE: N.T.S.

**WATER DATA**

STATIC 60 PSI  
 RESIDUAL 55 PSI  
 FLOW 871 GPM  
 ELEVATION 82'-0"  
 DATE: 7/16/12  
 TIME: 12:30 PM  
 INFORMATION PROVIDED BY: PORTLAND WATER DISTRICT  
 NOTE: UNDERGROUND TO BE INSTALLED, TESTED AND FLUSHED IN ACCORDANCE WITH NFPA #24 (ALL UNDERGROUND PIPING TO BE DONE BY OTHERS).



**WATER SUPPLY PLAN**  
SCALE: N.T.S.

**GENERAL NFPA #13R NOTES**

SPRINKLER SYSTEM INSTALLATION TO COMPLY WITH NFPA PAMPHLET # 13R 2010  
 EXPOSED LINE PIPING (1"-2") TO BE BLACK SCHEDULE 40 JOINED BY THREADED DUCTILE IRON FITTINGS  
 EXPOSED MAIN PIPING (2 1/2"-4") TO BE BLACK SCHEDULE 40 WITH GROOVED ENDS & WELDED OUTLETS JOINED BY MECHANICAL GROOVED FITTINGS.  
 CONCEALED LINE PIPING (1"-2") TO BE CPVC PLASTIC PIPE JOINED WITH GLUED CPVC PLASTIC FITTINGS  
 OWNER TO PROVIDE SUFFICIENT HEAT THROUGHOUT BUILDING TO PREVENT FREEZING OF WATER FILLED SPRINKLER PIPING AND EQUIPMENT. (40' F)

- SPRINKLERS ARE NOT REQUIRED IN THE FOLLOWING AREAS AS PER NFPA 13R, 2010 EDITION.
  - A. BATHROOMS NOT EXCEEDING 55 SQ. FT.
  - B. SMALL CLOSETS WITHIN THE DWELLING UNIT LESS THAN 24 SQ. FT. IN AREA W/THE LEAST DIMENSION NOT EXCEEDING 3'0"
  - C. OPEN ATTACHED PORCHES, BALCONIES, CORRIDORS AND STAIRS
  - D. CRAWL SPACES, ATTICS, PENTHOUSE EQUIPMENT & ELEVATOR MACHINE ROOMS, FLOOR/CEILING SPACES AND ELEVATOR SHAFTS AND OTHER CONCEALED SPACES THAT ARE NOT INTENDED FOR LIVING PURPOSES AND DO NOT CONTAIN FUEL-FIRED EQUIPMENT.
  - E. CLOSETS ON EXTERIOR BALCONIES W/NO DIRECT ACCESS FROM THE DWELLING UNIT.

DATE	REVISIONS	REQUIRED APPROVALS
12/31/12	SUBMITTAL PLAN	OWNER STATE FIRE MARSHAL PORTLAND FIRE DEPARTMENT
		DRAWN BY: RJP NICET LEVEL: CERT.#
		CHECKED BY: W.A.F. NICET LEVEL: III CERT.#: 095574
		CONTRACTOR LICENSE # 101
		CONTRACTOR RMS # 368

43 CUMBERLAND AVE.  
 43 CUMBERLAND AVE. PORTLAND, ME

CONTRACT WITH: MUNJOY HILL HOMES  
**EASTERN FIRE PROTECTION**  
 AUBURN/LEWISTON INDUSTRIAL AIRPARK, AUBURN, MAINE 04210

FIRE SPRINKLER PLANS & DETAILS  
 DWG. NO. 2 OF 2  
 JOB NUMBER AU-4962  
 SCALE AS NOTED  
 DATE 12/21/12