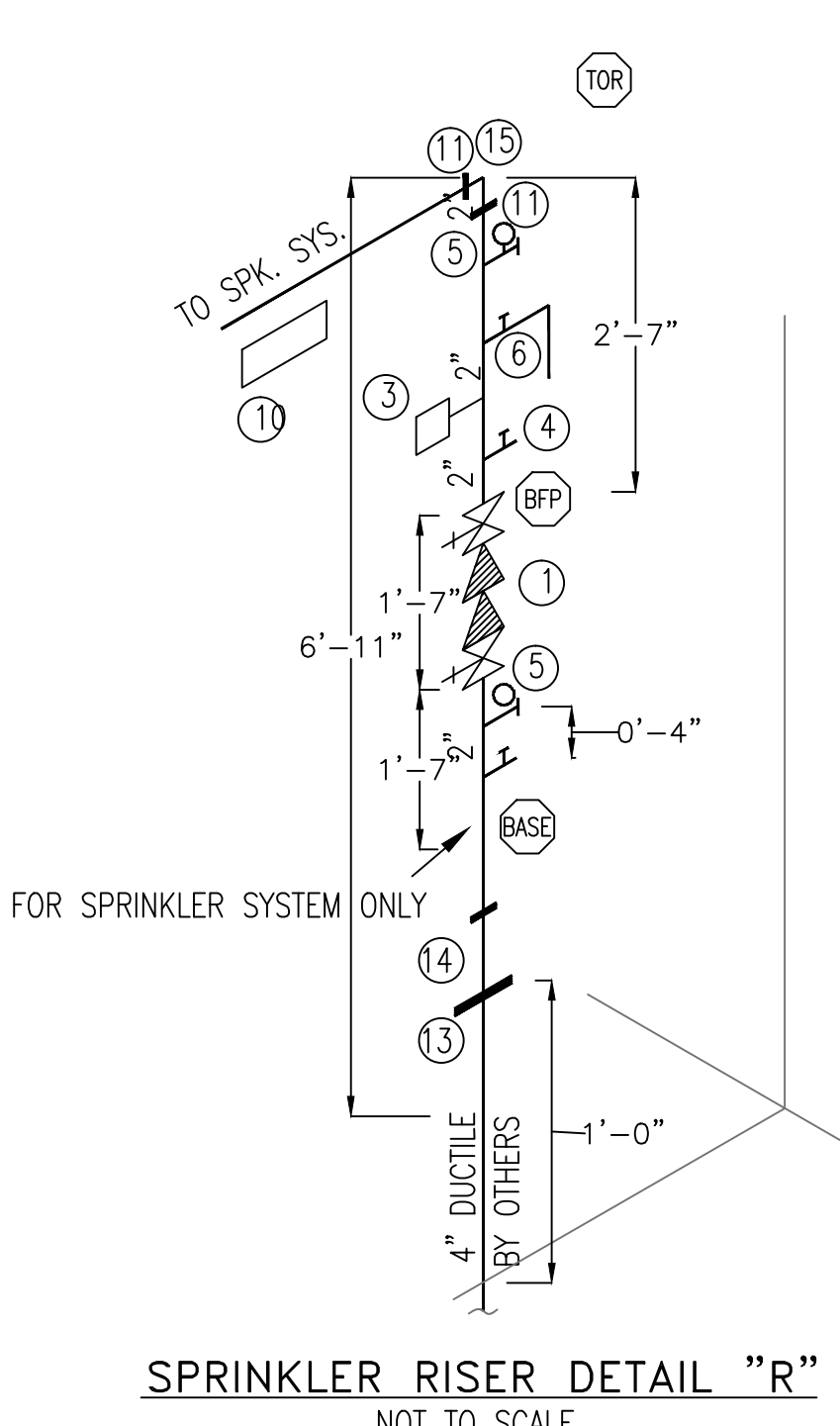
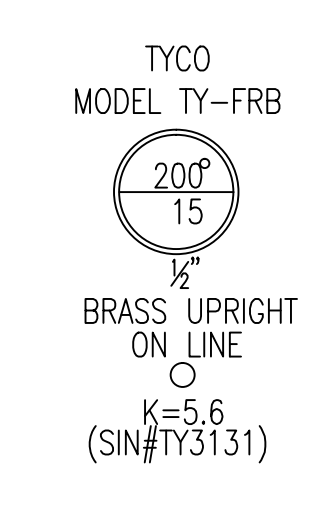
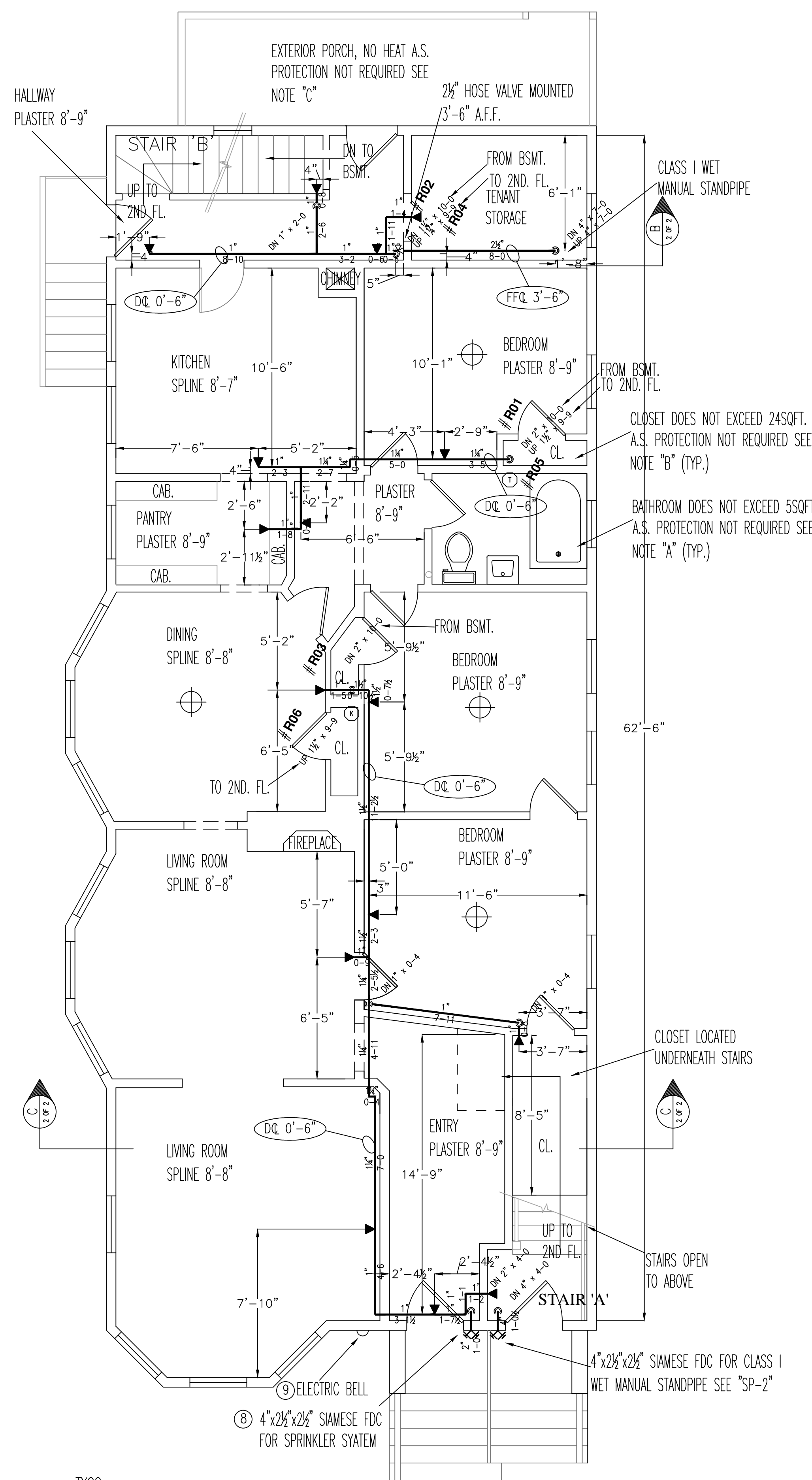


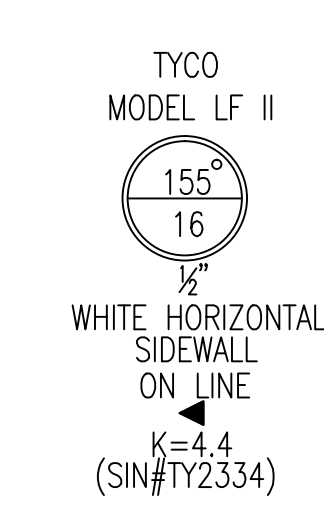
FIRE SPRINKLER PLAN - BASEMENT
 SCALE: 1/4"=1'-0"
 AREA PROTECTED: 1,400 SQ.FT.
 FINISH FLOOR ELEVATION : 100'-0"
 COLOR :



- LEGEND**
- 2" AMES 2000B BACKFLOW PREVENTER W/ 2" BUTTERBALL VALVES. CHAINED & LOCKED OPEN.
 - NOT USED
 - 2" POTTER MOD. VSR-2 FLOW SWITCH.
 - 1/2" AUXILIARY DRAIN VALVE.
 - WATER PRESSURE GAUGE W/ 1/4" THREE-WAY VALVE.
 - 1" MAIN DRAIN & ALARM TEST VALVE.
 - 2" SWING CHECK VALVE. (SEE BSMT. LEVEL PLAN)
 - 4"x2 1/2"x2 1/2" FIRE DEPARTMENT CONNECTION W/ PLATE & CAP. (SEE FIRST FLR. PLAN)
 - ELECTRIC BELL. (SEE FIRST FLR. PLAN)
 - SPARE HEAD BOX WITH WRENCH & 3 SPARE SPRINKLERS OF EACH TYPE.
 - 2" GROOVED COUPLING
 - 1/2" AUTOMATIC BALL DRIP (SEE BSMT. PLAN)
 - 4"x9" UNI-FLANGE (BY OTHERS)
 - 2" FLANGE X GROOVE SPOOL PIECE
 - 2" GROOVED 90° ELL.
 - ALL ELECTRICAL WIRING BY OTHERS.



FIRE SPRINKLER PLAN - FIRST FLOOR
 SCALE: 1/4"=1'-0"
 AREA PROTECTED: 1,400 SQ.FT.
 FINISH FLOOR ELEVATION : 109'-1"
 COLOR :

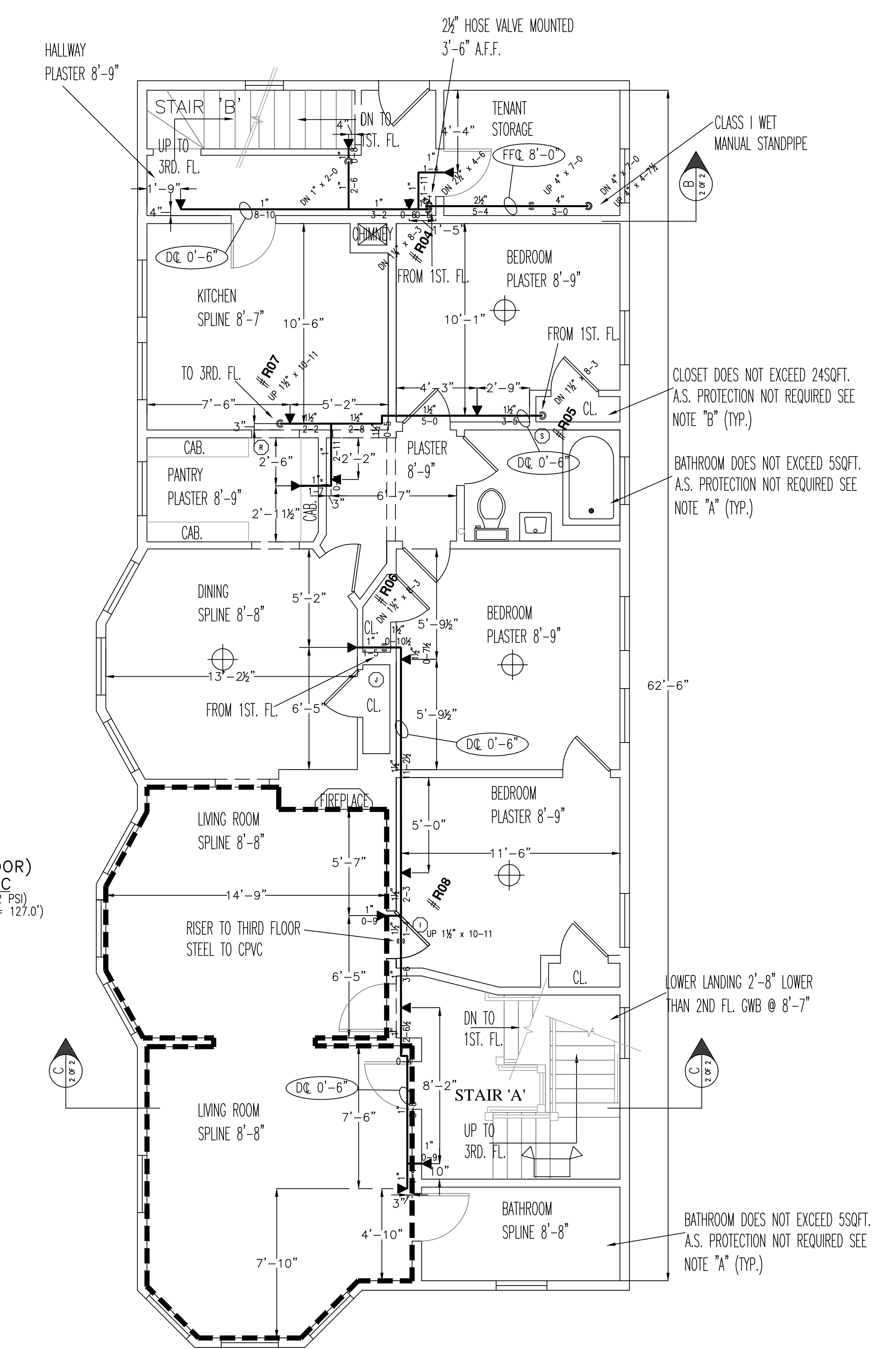


TYCO LF II
 LF II RESIDENTIAL RECESSED PENDENT SPRINKLER DESIGN REQUIREMENTS FOR WET SYSTEM

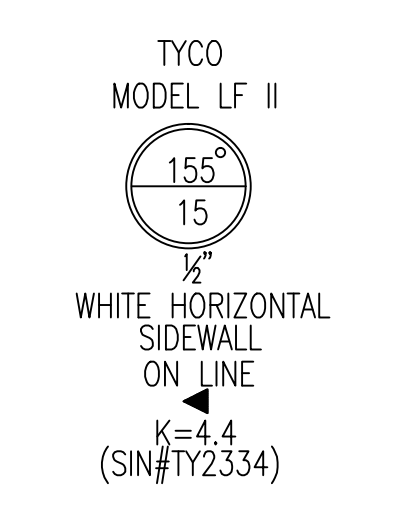
MODEL	COVERAGE AREA MAX. SPACE BETWEEN SPRINKLERS	MINIMUM DESIGN FLOW (PRESSURE) FOR HORIZONTAL CEILING (MAX. 2" RISE FOR 12" RUN)	MINIMUM DESIGN FLOW (PRESSURE) FOR HORIZONTAL CEILING (MAX. 4" RISE FOR 12" RUN)	MINIMUM DESIGN FLOW (PRESSURE) FOR HORIZONTAL CEILING (MAX. 8" RISE FOR 12" RUN)	
					155F/68C
LF II RECESSED PENDENT	12 x 12	6" (OR LESS)	13GPM(7.0psi)	13GPM(7.0psi)	13GPM(7.0psi)
	14 x 14	7"	13GPM(7.0psi)	13GPM(7.0psi)	13GPM(7.0psi)
	16 x 16	8"	13GPM(7.0psi)	13GPM(7.0psi)	13GPM(7.0psi)
	18 x 18	9"	17GPM(12.0psi)	17GPM(12.0psi)	17GPM(12.0psi)
	20 x 20	10"	20GPM(16.7psi)	20GPM(16.7psi)	21GPM(18.4psi)

K-FACTOR = 4.9, 1/2" N.P.T.
 MAXIMUM SPACING FROM WALL 8'-0"
 MINIMUM SPACING BETWEEN HEADS 8'-0"
 MAXIMUM SPACING BETWEEN HEADS 10'-0"

(SECOND FLOOR) PROOF CALC
 (2 HEAD CALC. @ 13.2 PSI)
 (ELEV. @ HIGHEST HEAD = 127.0')



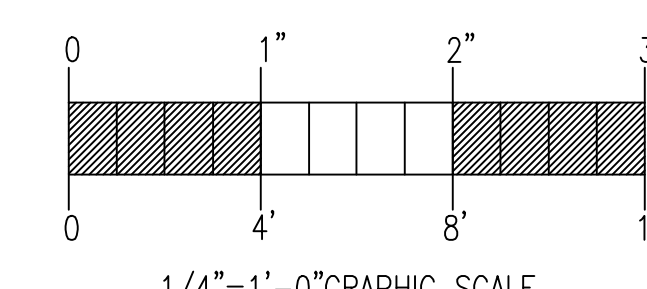
FIRE SPRINKLER PLAN - SECOND FLOOR
 SCALE: 1/4"=1'-0"
 AREA PROTECTED: 1,400 SQ.FT.
 FINISH FLOOR ELEVATION : 118'-10"
 COLOR :



TYCO LF II
 LF II RESIDENTIAL HORIZONTAL SIDEWALL SPRINKLER DESIGN REQUIREMENTS

MODEL	COVERAGE AREA WIDTH x LENGTH FT. x FT.	MINIMUM DESIGN FLOW AND RESIDUAL PRESSURE			
		MINIMUM DESIGN FLOW AND RESIDUAL PRESSURE TOP OF DEFLECTOR TO CEILING: 4 TO 6 INCHES	MINIMUM DESIGN FLOW AND RESIDUAL PRESSURE TOP OF DEFLECTOR TO CEILING: 6 TO 12 INCHES	MINIMUM DESIGN FLOW AND RESIDUAL PRESSURE TOP OF DEFLECTOR TO CEILING: 6 TO 12 INCHES	MINIMUM DESIGN FLOW AND RESIDUAL PRESSURE TOP OF DEFLECTOR TO CEILING: 6 TO 12 INCHES
LF II HORIZONTAL SIDEWALL	12 x 12	155F/68C	175F/79C	155F/68C	175F/79C
	14 x 14	13GPM(8.7psi)	13GPM(8.7psi)	13GPM(8.7psi)	13GPM(8.7psi)
	16 x 16	14GPM(10.1psi)	14GPM(10.1psi)	14GPM(10.1psi)	14GPM(10.1psi)
	18 x 18	16GPM(13.2psi)	16GPM(13.2psi)	17GPM(14.9psi)	17GPM(14.9psi)
	16 x 18	19GPM(18.6psi)	19GPM(18.6psi)	20GPM(20.7psi)	20GPM(20.7psi)
	16 x 20	23GPM(27.3psi)	23GPM(27.3psi)	23GPM(27.3psi)	23GPM(27.3psi)
	18 x 18	23GPM(27.3psi)	23GPM(27.3psi)	23GPM(27.3psi)	23GPM(27.3psi)
	18 x 20	26GPM(34.9psi)	26GPM(34.9psi)	26GPM(34.9psi)	26GPM(34.9psi)

FOR HORIZONTAL CEILING (MAXIMUM 8 INCH RISE FOR 12 INCH RUN)
 K-FACTOR = 4.4, 1/2" N.P.T.
 MAXIMUM THROW 16'-0"
 MAXIMUM DISTANCE FROM SIDEWALL 8'-0"
 MINIMUM SPACING BETWEEN HEADS 8'-0"



GENERAL NFPA #13R NOTES

- SPRINKLERS ARE NOT REQUIRED IN THE FOLLOWING AREAS AS PER NFPA 13R, 2010 EDITION.
 - A. BATHROOMS NOT EXCEEDING 55 SQ. FT.
 - B. SMALL CLOSETS WITHIN THE DWELLING UNIT LESS THAN 24 SQ. FT. IN AREA W/THE LEAST DIMENSION NOT EXCEEDING 3'0"
 - C. OPEN ATTACHED PORCHES, BALCONIES, CORRIDORS AND STAIRS
 - D. CRAWL SPACES, ATTICS, PENTHOUSE EQUIPMENT & ELEVATOR MACHINE ROOMS, FLOOR/CEILING SPACES AND ELEVATOR SHAFTS AND OTHER CONCEALED SPACES THAT ARE NOT INTENDED FOR LIVING PURPOSES AND DO NOT CONTAIN FUEL-FIRED EQUIPMENT.
 - E. CLOSETS ON EXTERIOR BALCONIES W/NO DIRECT ACCESS FROM THE DWELLING UNIT.

DATE: 12/31/12
 SUBMITTAL PLAN

REVISIONS:

REQUIRED APPROVALS:

OWNER: STATE FIRE MARSHAL, PORTLAND FIRE DEPARTMENT

DRAWN BY: RJP, NICET LEVEL

CHECKED BY: W.A.F., NICET LEVEL III, CONTRACTOR LICENSE # 101, CONTRACTOR RMS # 368

43 CUMBERLAND AVE.
 43 CUMBERLAND AVE. PORTLAND, ME

CONTRACT WITH: MUNJOY HILL HOMES

EASTERN FIRE PROTECTION
 AUBURN/LEWISTON INDUSTRIAL AIRPARK, AUBURN, MAINE 04210

FIRE SPRINKLER PLANS & DETAILS
 DWG. NO. 1 OF 2
 JOB NUMBER AU-4962
 SCALE AS NOTED
 DATE 12/31/12