

**MARK
MUELLER
ARCHITECTS**
A.I.A.

100 Commercial Street
Suite 205
Portland, Maine 04101
Phone: 207.774.9057
Fax: 207.773.3851
Email:
mark@muellerarchitects.com

© COPYRIGHT 2013
MUELLER ARCHITECTS, LLC

43 CUMBERLAND AVE. APARTMENTS
MAIN BUILDING
MARK SMITH AND STEPHANIE DUNN
41 CUMBERLAND AVENUE PORTLAND, MAINE

LIFE SAFETY PLANS

REVISION
DATE
MAY 28, 2013
PROJECT
43 CUMBERLAND
DRAWN BY
MPP
CHECK BY
MLM

A-4.0

**LIFE SAFETY
LEGEND:**

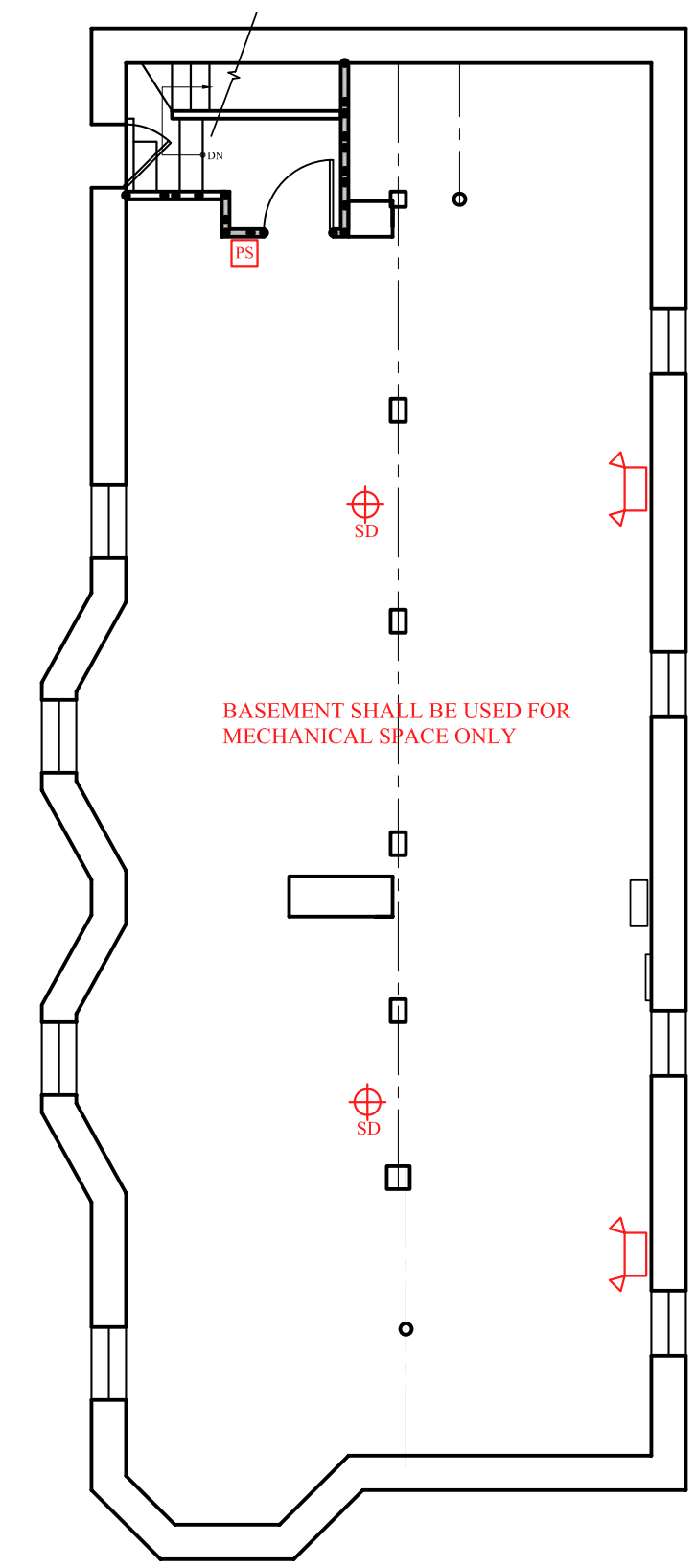
- EMERGENCY BACKUP LIGHT
- DATA/PHONE OUTLET (NOT SHOWN)
- ELECTRICAL OUTLET (NOT SHOWN)
- EXIT LIGHT
- SMOKE DETECTOR
- COMBINATION SMOKE/CARBON MONOXIDE DETECTOR (INSTALL IN ALL SLEEPING UNITS & PER CITY/STATE REQUIREMENTS)
- HORN/STROBE
- STROBE
- FIRE EXTINGUISHER IN CABINET
- PULL STATION (VERIFY PULL STATION REQUIREMENTS & LOCATIONS W/ CITY/STATE)

LIFE SAFETY NOTES:

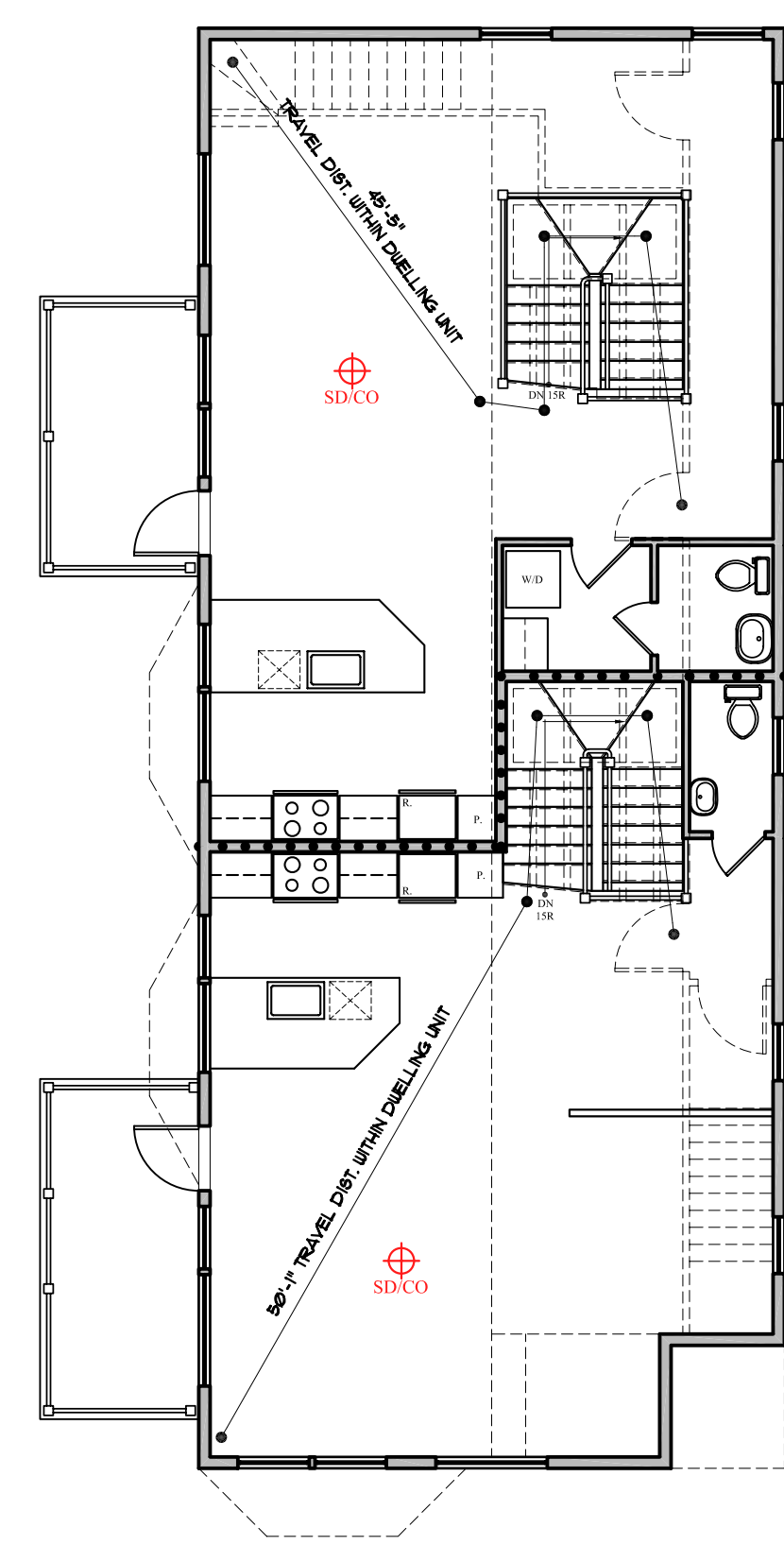
-LIFE SAFETY SYSTEM SHALL BE DESIGNED AND INSTALLED PER NFPA 72 & PER CITY & STATE REQUIREMENTS AND BY A CITY/ STATE APPROVED CONTRACTOR WITH A SEPERATE PERMIT.

WALL LEGEND

- EXISTING WALL
- DEMO WALL
- PROPOSED WALL
- FIRE RATED WALL 1/2 HOUR
- 1 HOUR
- 2 HOUR

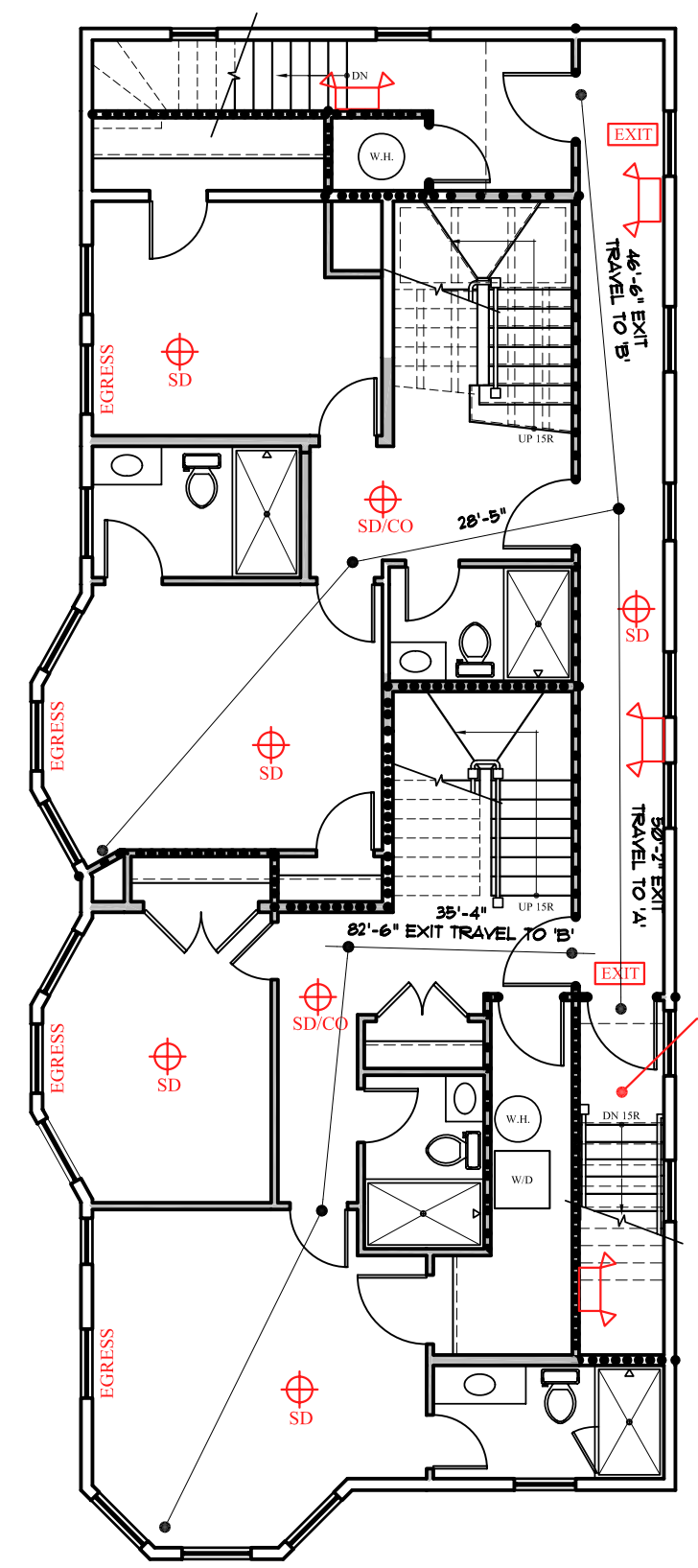


BASEMENT LIFE SAFETY
SCALE: 1/8" = 1'-0"



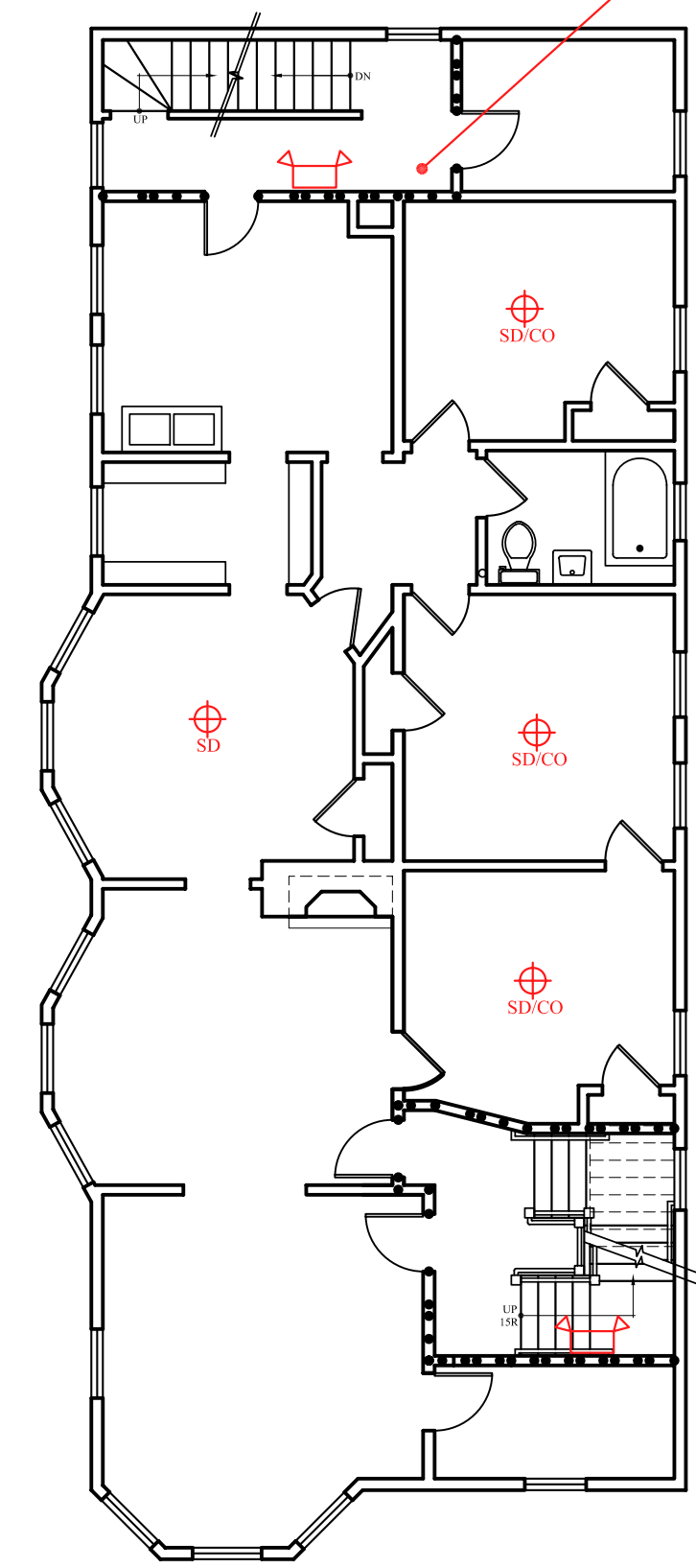
4TH FLR LIFE SAFETY
SCALE: 1/8" = 1'-0"

NOTE:
STAIRWELL SIGNAGE @
EACH FLOOR SHALL MEET
NFPA 101:7.21.2.5.4



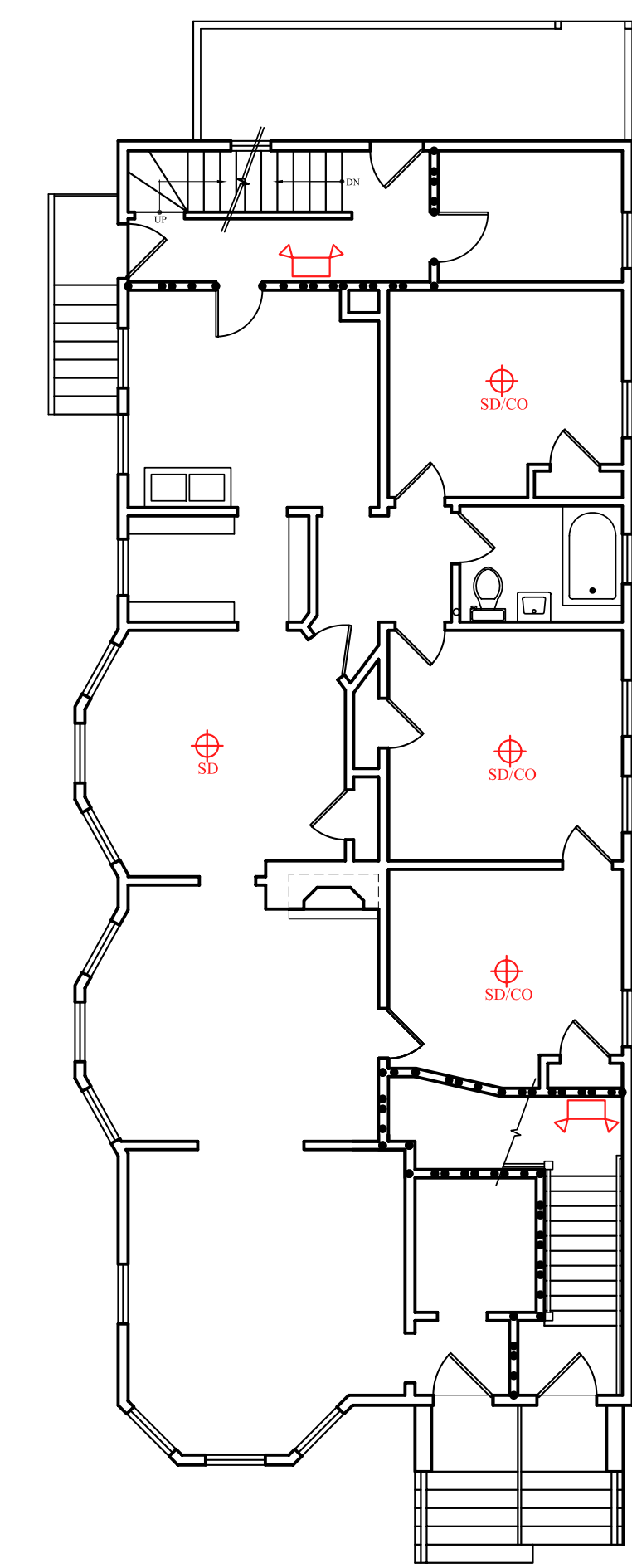
3RD FLR LIFE SAFETY
SCALE: 1/8" = 1'-0"

EGRESS STAIRS
SHALL HAVE
CONTINUOUS
ILLUMINATION OF
10 FT-CANDLE MIN.
PER NFPA 101
(TYP. @ ALL
EGRESS STAIRS)



2ND FLR LIFE SAFETY
SCALE: 1/8" = 1'-0"

EGRESS STAIRS
SHALL HAVE
CONTINUOUS
ILLUMINATION OF
10 FT-CANDLE MIN.
PER NFPA 101
(TYP. @ ALL
EGRESS STAIRS)



1ST FLR LIFE SAFETY
SCALE: 1/8" = 1'-0"

INSTALL SPRINKLER SYSTEM PER NFPA 13R THROUGHOUT THE BUILDING

LIFE SAFETY NOTES:

-LIFE SAFETY SYSTEM SHALL BE DESIGNED AND INSTALLED PER NFPA 72 & PER CITY & STATE REQUIREMENTS AND BY A CITY/ STATE APPROVED CONTRACTOR WITH A SEPERATE PERMIT.

-PULL STATIONS TO PROVIDE ACTIVATION OF SMOKE DETECTOR SIGNALING

SINGLE EXIT:
705.3.1.1 - SINGLE EXIT BUILDINGS:
ITEM #6 ALLOWS ONE EXIT FROM A DWELLING UNIT IN AN EXISTING R-2 OCCUPANCY, PROVIDED THAT THE TRAVEL DISTANCE WITHIN THE DWELLING UNIT DOES NOT EXCEED 75'

ADDENDA SET: MAY 28, 2013