

SHEET NOTES:

- 1 FLOW & TAMPER SWITCH LOCATED IN BSMT. VERIFY EXACT LOCATION, QUANTITY AND MONITOR
- 2 ADDRESSABLE MONITOR MODULE(S) PROVIDED TO MONITOR ALL WATER FLOW, PRESSURE SWITCHES, TAMPER SWITCHES AND POST INDICATING VALVES ASSOCIATED WITH THE FIRE SPRINKLER SYSTEM. INSTALLING CONTRACTOR SHALL FIELD VERIFY EXACT MOUNTING, CIRCUITING AND PROGRAMMING REQUIREMENTS. FIELD VERIFY

GENERAL NOTES:

- 1. 110 VAC SMOKE DETECTORS (SD/CO) WILL BE SUPPLIED & INSTALLED BY OTHERS. NOT CONNECTED TO FIRE ALARM SYSTEM - WILL NOT SOUND GENERAL ALARM
- 2. INSTALLATION SHALL COMPLY WITH NEC, NFPA 72 AND ALL OTHER APPLICABLE CODES AS REQUIRED BY THE LOCAL AUTHORITY HAVING JURISDICTION.
- 3. WIRING DEPICTED ON THESE PLANS IS SCHEMATIC - ACTUAL WIRE LOCATIONS MAY DIFFER FROM THESE PLANS. WIRING SHALL BE PERFORMED AS ACTUAL BUILDING CONSTRUCTION CONDITIONS ALLOW AND TO MINIMIZE PENETRATIONS THROUGH AREA SEPARATION WALLS AND FIRE WALLS. THE USE OF A RACEWAY IS PERMITTED AS LONG AS NO 110V OR HIGHER VOLTAGE CABLES ARE IN THE SAME RACEWAY.
- 4. POWER FOR ALL FIRE ALARM PANELS AND FIRE ALARM POWER SUPPLIES MUST BE PROVIDED BY A DEDICATED AC BRANCH CIRCUIT.
- 5. POWER-LIMITED AND NONPOWER-LIMITED CIRCUIT WIRING MUST REMAIN SEPARATED IN CABINET. ALL POWER-LIMITED CIRCUIT WIRING MUST REMAIN AT LEAST 0.25" AWAY FROM ANY NONPOWER-LIMITED CIRCUIT WIRING. FURTHERMORE, ALL POWER-LIMITED AND NONPOWER-LIMITED CIRCUIT WIRING MUST ENTER AND EXIT THE CABINET THROUGH DIFFERENT KNOCK OUTS AND/OR SEPARATE CONDUITS.
- 6. SMOKE DETECTORS SHALL NOT BE INSTALLED UNTIL AFTER CONSTRUCTION CLEAN-UP IS COMPLETED AND FINAL.
- 7. LOCATE SMOKE DETECTORS A MINIMUM OF THREE (3) FEET FROM MECHANICAL DIFFUSERS. WALL-MOUNTED SMOKE DETECTORS SHALL BE LOCATED A MINIMUM OF 4" AND A MAXIMUM OF 12" FROM CEILING. CEILING-MOUNTED SMOKE DETECTORS SHALL BE MOUNTED ON CEILINGS AND NOT ON THE BOTTOMS OF BEAMS OR JOISTS.

OPERATIONS MATRIX

FIRE ALARM INPUT	FIRE ALARM OUTPUT	ACTIVATE ALARM INDICATOR	ACTIVATE AUDIBLE ALARM DEVICES	ACTIVATE SUPERVISORY INDICATOR	ACTIVATE AUDIBLE SUPERVISORY SIGNAL	ACTIVATE TROUBLE INDICATOR	ACTIVATE AUDIBLE TROUBLE INDICATOR	TRANSMIT ALARM SIGNAL	TRANSMIT SUPERVISORY SIGNAL	TRANSMIT TROUBLE SIGNAL
PULL STATION		●	●					●		
SMOKE DETECTOR		●	●					●		
HEAT DETECTOR		●	●					●		
FLOW SWITCH		●						●		
TAMPER SWITCH				●	●					●
FIRE ALARM AC POWER FAIL								●	●	●
FIRE ALARM LOW BATTERY								●	●	●
OPEN CIRCUIT								●	●	●
GROUND FAULT								●	●	●
NAC SHORT CIRCUIT								●	●	●
LOSS OF AC TO BUILDING								●	●	●

FIRE ALARM SYMBOL LEGEND

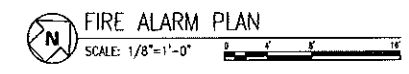
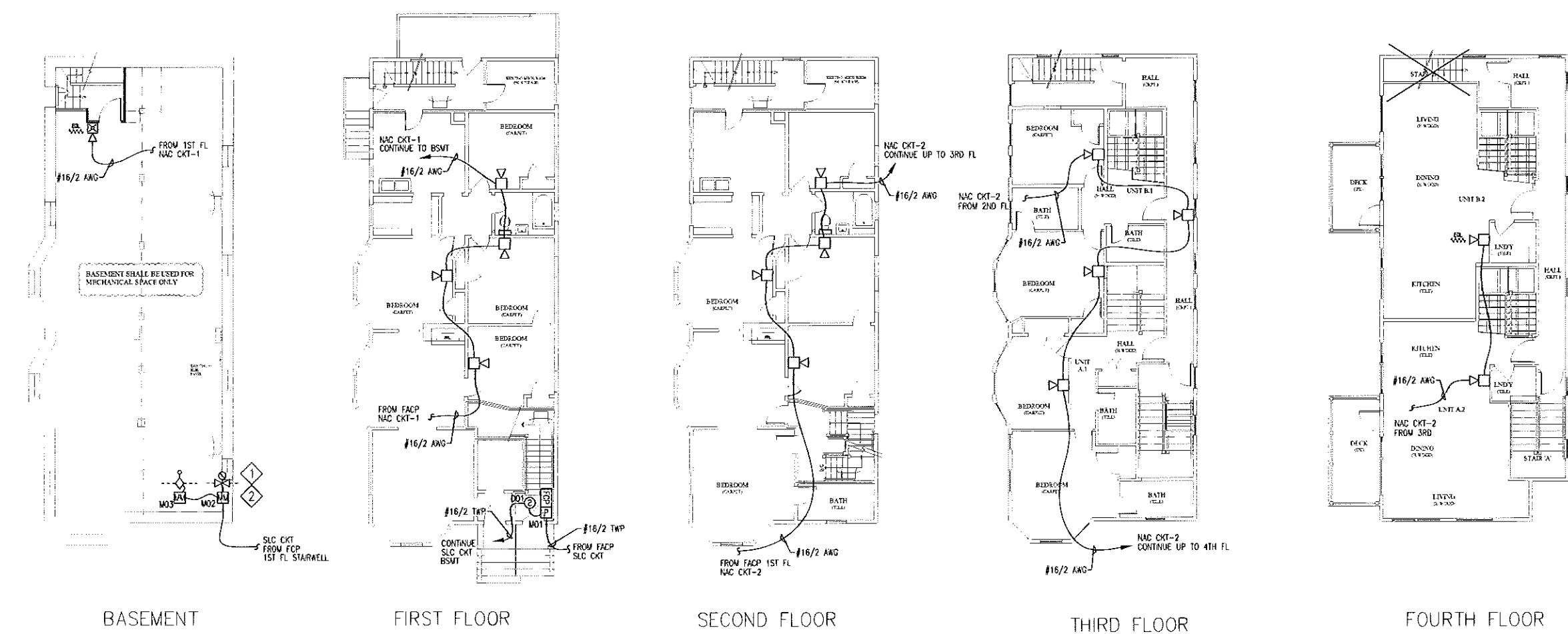
SYMBOL	DESCRIPTION	MOUNTING
[FCP]	FIRE ALARM CONTROL PANEL	WALL-TOP @ 66"
[AMM]	ADDRESSABLE MONITOR MODULE	FIELD VERIFY
[SD]	SMOKE DETECTOR	CEILING
[HD]	HEAT DETECTOR	CEILING
[110V]	110vac SMOKE/CO DETECTOR WITH SOUNDER BASE	CEILING
[MPS]	MANUAL PULL STATION	WALL @ 48"
[SFS]	SPRINKLER FLOW SWITCH	BY OTHERS
[STW]	SPRINKLER TAMPER SWITCH	BY OTHERS
[HS]	HORN/STROBE	WALL 80"-96"
[MH]	MAN HORN	WALL 80"-96"
[S]	STROBE	WALL 80"-96"

ABBREVIATION	DESCRIPTION
E	EXISTING
G	WITH GUARD
P	PENDENT MOUNT
R	RESIDENTIAL (110V)
S	SOUNDER BASE
WP	WEATHER PROOF
EOL	END OF LINE RESISTOR
EOLR	END OF LINE RELAY
AWG	AMERICAN WIRE GAUGE
TWP	TWISTED PAIR
TWSP	TWISTED SHIELDED PAIR
FPLP	FIRE POWER LIMITED PLENUM
FPLR	FIRE POWER LIMITED RISER

SPRINKLER FLOW SWITCH (SFS) 75
STROBE (S) 30

DEVICE ADDRESS: D01
L10001 OR D01
(D or W - DENOTES DETECTOR OR MODULE #)

1-1/2" TWP
WIRE TYPE APPROPRIATE CONDUCTOR EQUAL WIRE SIZE
1' OF CABLES (IF INSTALLED ONLY 1 CABLE NEEDED)



MAINE STATE SECURITY ALARMS

Phone: (207) 247-4371
Toll Free: (800) 273-4371

Small Enough To Care - Large Enough To Serve
Family owned and operated - a division of L'Heureux, Inc.

43 CUMBERLAND AVE APARTMENTS
41 CUMBERLAND AVE
PORTLAND, MAINE
FIRE ALARM SYSTEM

DRAWN	JS UNICAD #13091
CHECKED	WAYNE HAWES NICET IV 90496
DATE	2/29/2013
REVISION	0
SCALE	1/8"=1FT

UNICAD, Inc.
576 N. 400 St.
Proper, VT 04415
Office: 877.882.8413
www.unicad.net

FA-1