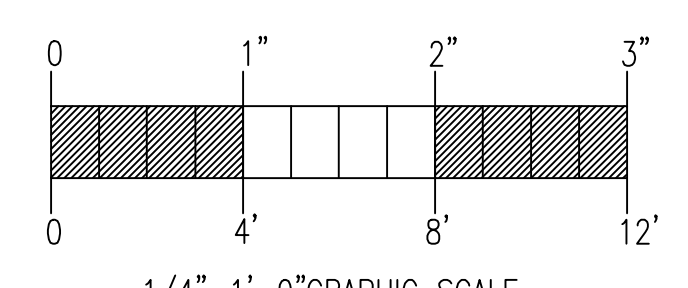
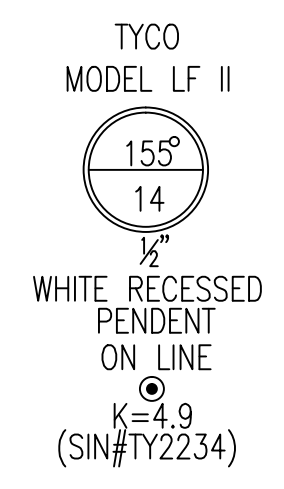
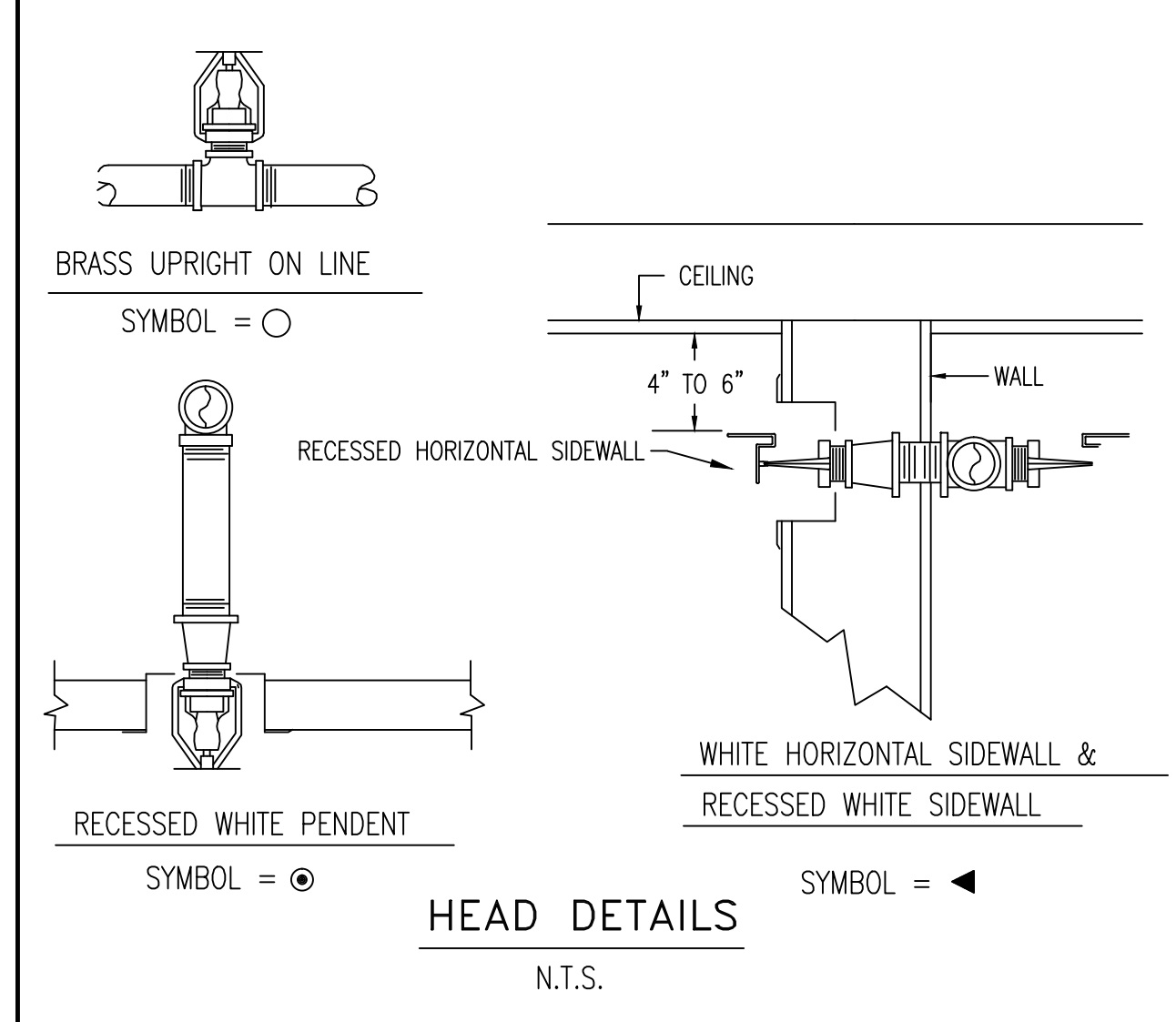


**FIRE SPRINKLER PLAN - THIRD FLOOR**

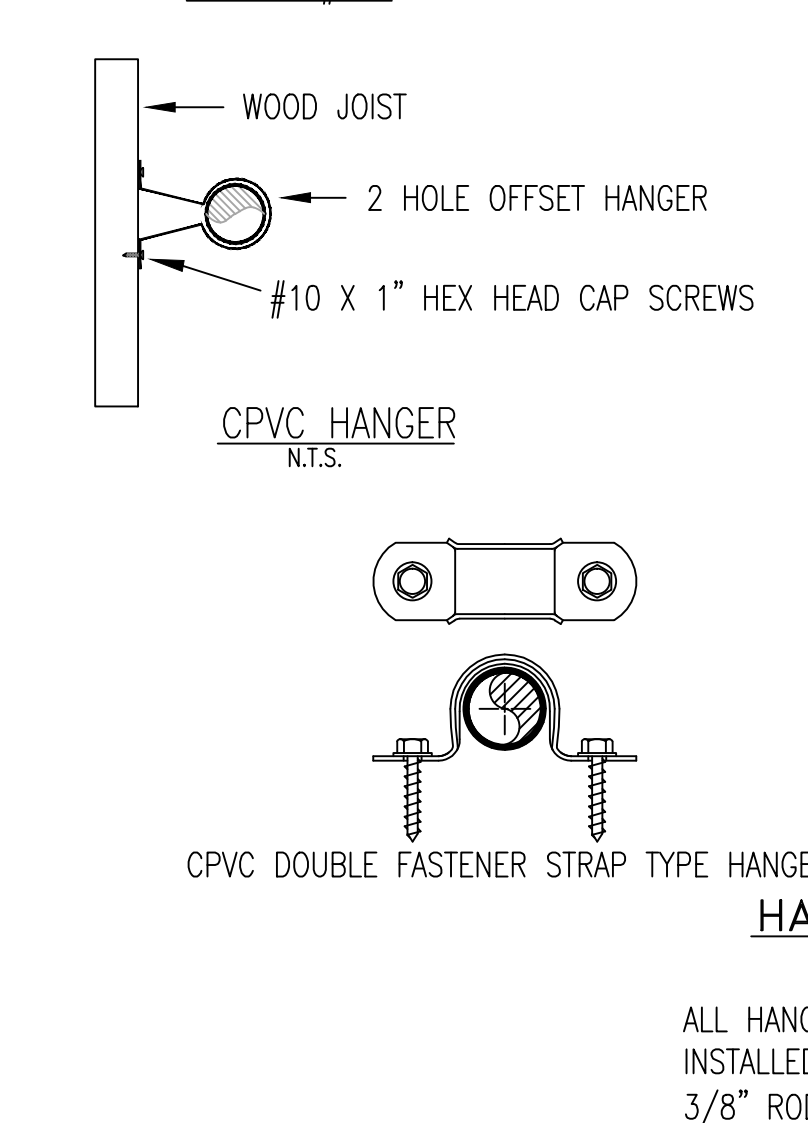
SCALE: 1/4"=1'-0"  
 AREA PROTECTED: 1,400 SQ.FT.  
 FINISH FLOOR ELEVATION : 128'-7"  
 COLOR: YELLOW



1/4"=1'-0" GRAPHIC SCALE

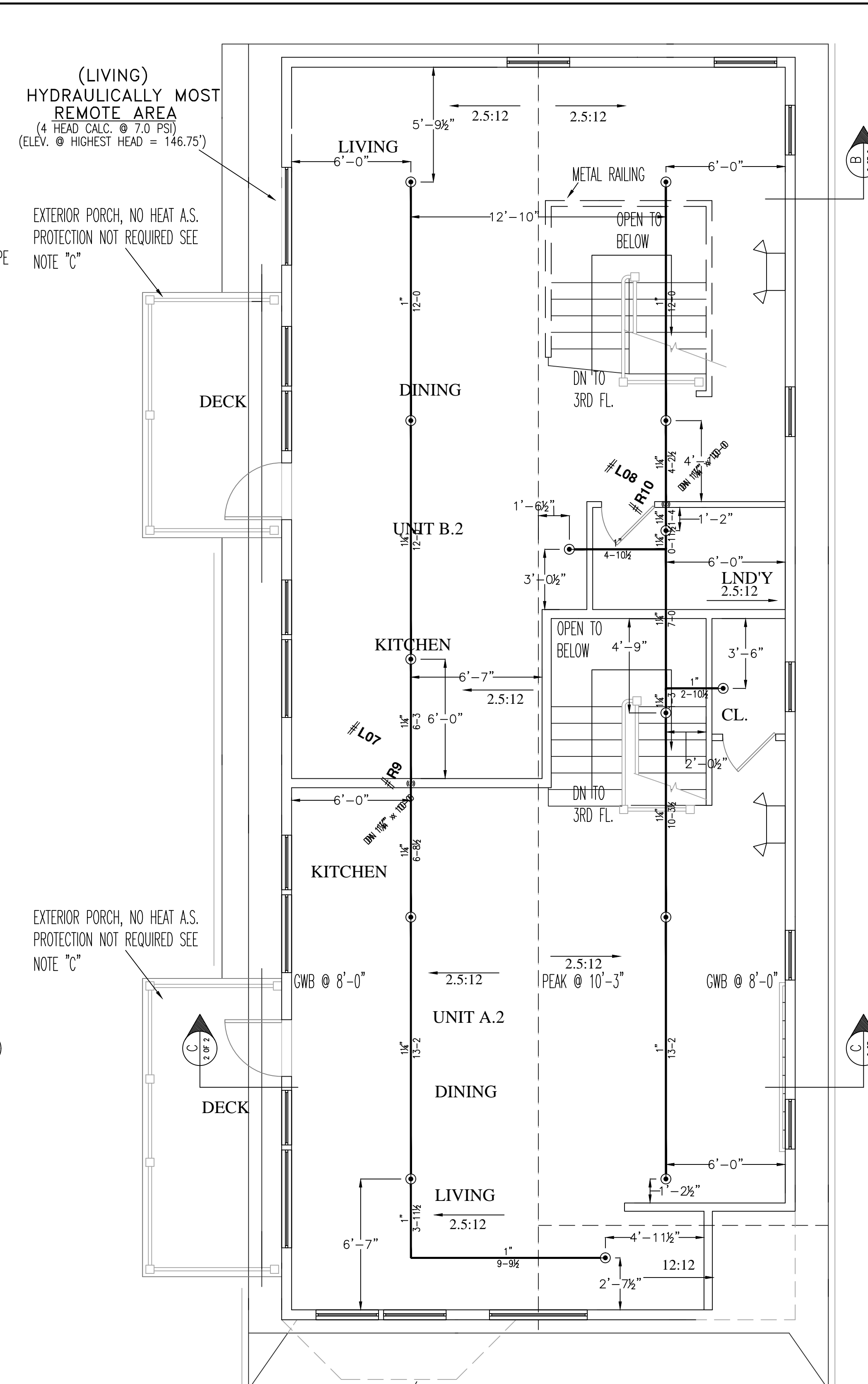


**HEAD DETAILS**



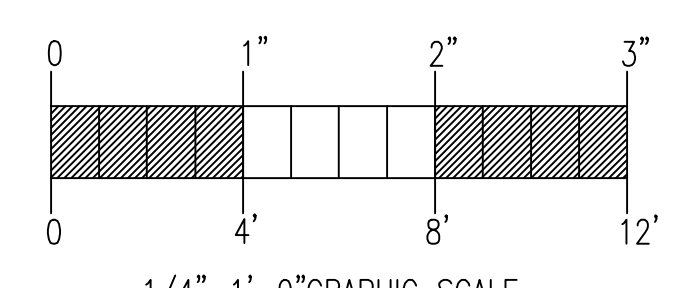
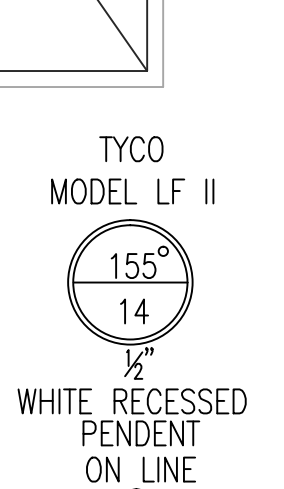
**HANGER DETAILS**

NOT TO SCALE  
 ALL HANGERS TO BE PROVIDED AND INSTALLED AS PER NFPA # 13D (2010) 3/8" ROD FOR 1" TO 4" PIPE



**FIRE SPRINKLER PLAN - FOURTH FLOOR**

SCALE: 1/4"=1'-0"  
 AREA PROTECTED: 1,400 SQ.FT.  
 FINISH FLOOR ELEVATION : 138'-7"  
 COLOR: TBD



1/4"=1'-0" GRAPHIC SCALE

**HYDRAULIC SYSTEM**

THIS BUILDING IS PROTECTED BY A HYDRAULICALLY DESIGNED AUTOMATIC SPRINKLER SYSTEM.

LOCATION: FOURTH FLOOR

NFPA #13R

BASIS OF DESIGN:

1. GPM PER HEAD	13
2. NUMBER OF HEADS CALCULATED	4

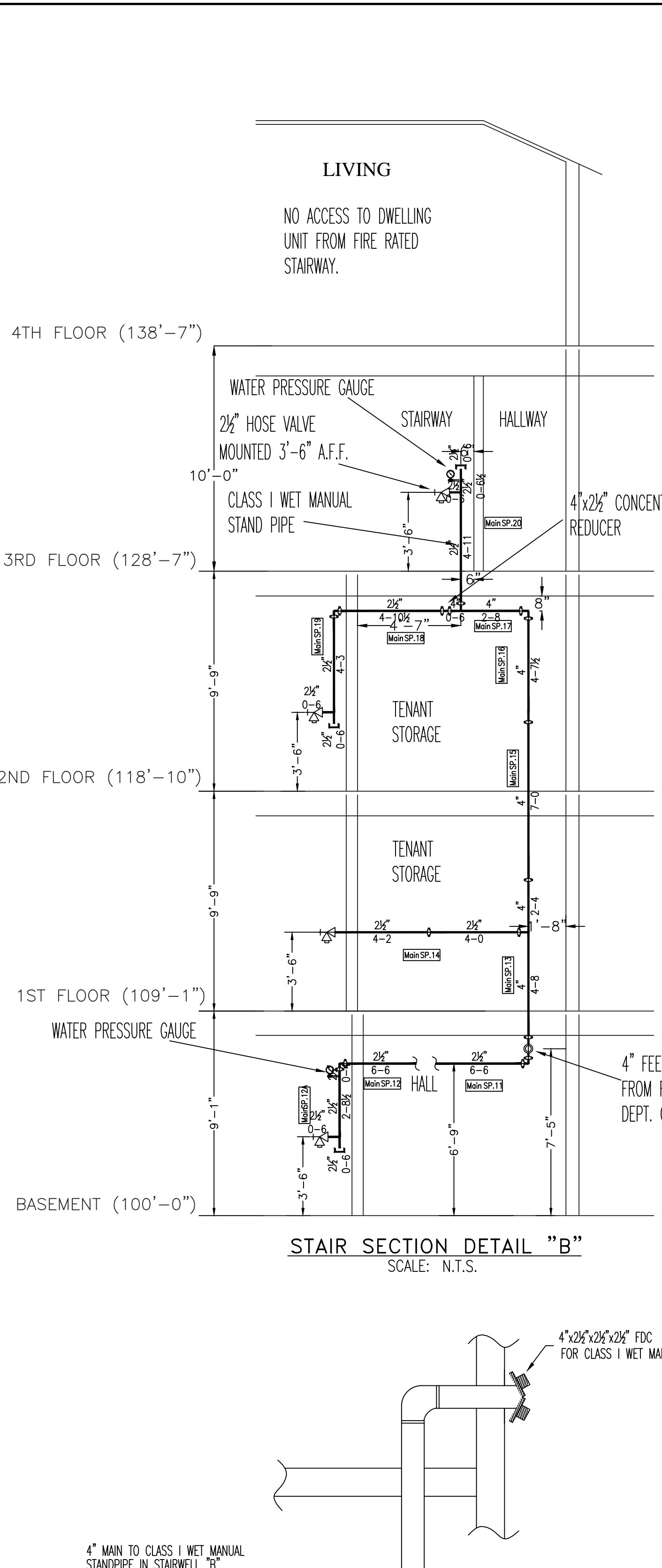
SYSTEM DEMAND AT BASE:

1. WATER FLOW RATE (GPM)	57.35
2. RESIDUAL PRESSURE AT BASE (PSI)	46.66

HYDRAULIC DATA NAMEPLATES TO BE MOUNTED AT SYSTEM RISER

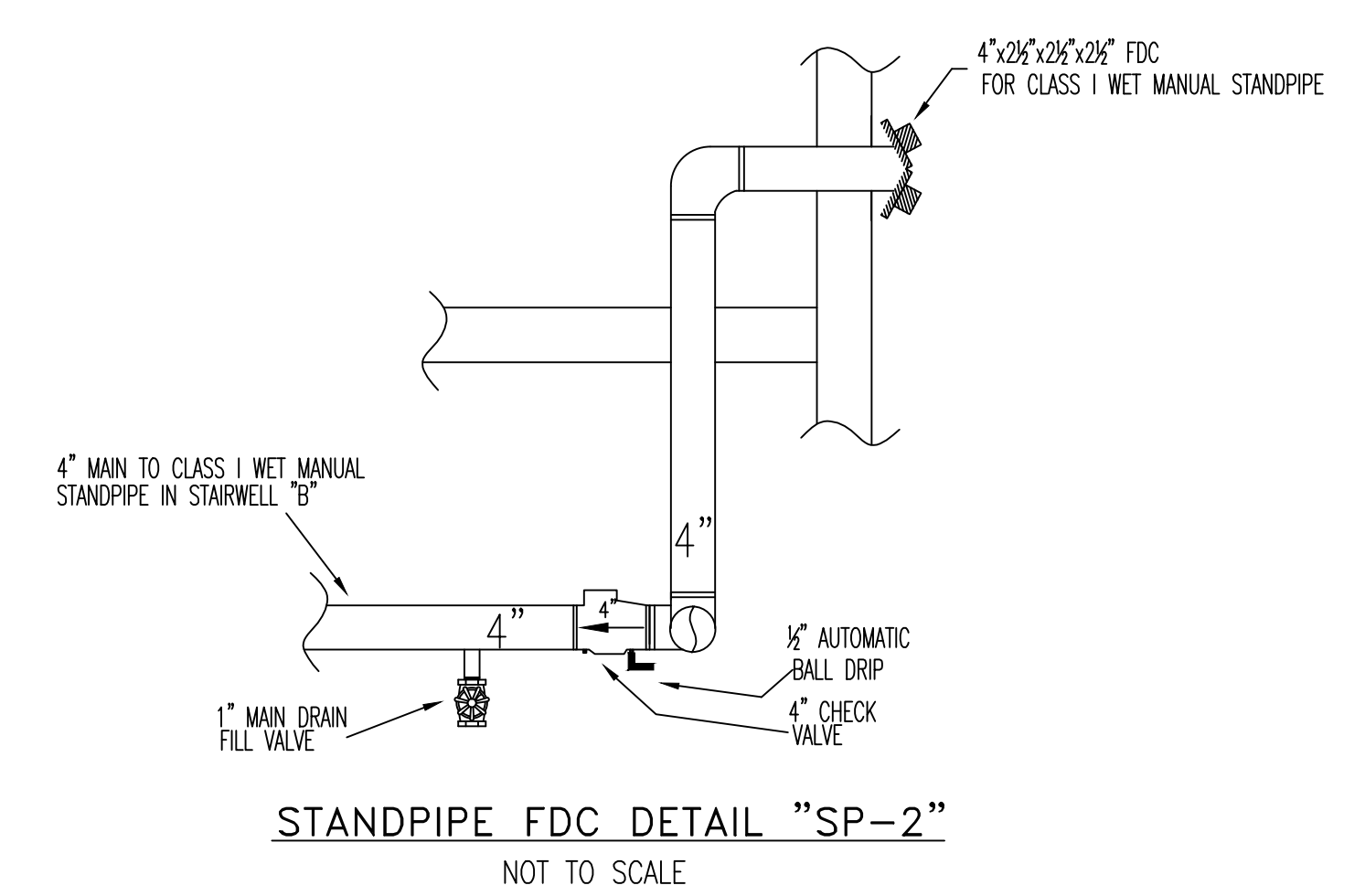
NOTE: HIGHEST SPRINKLER IS 115.75'

○ = HYDRAULIC REFERENCE POINT



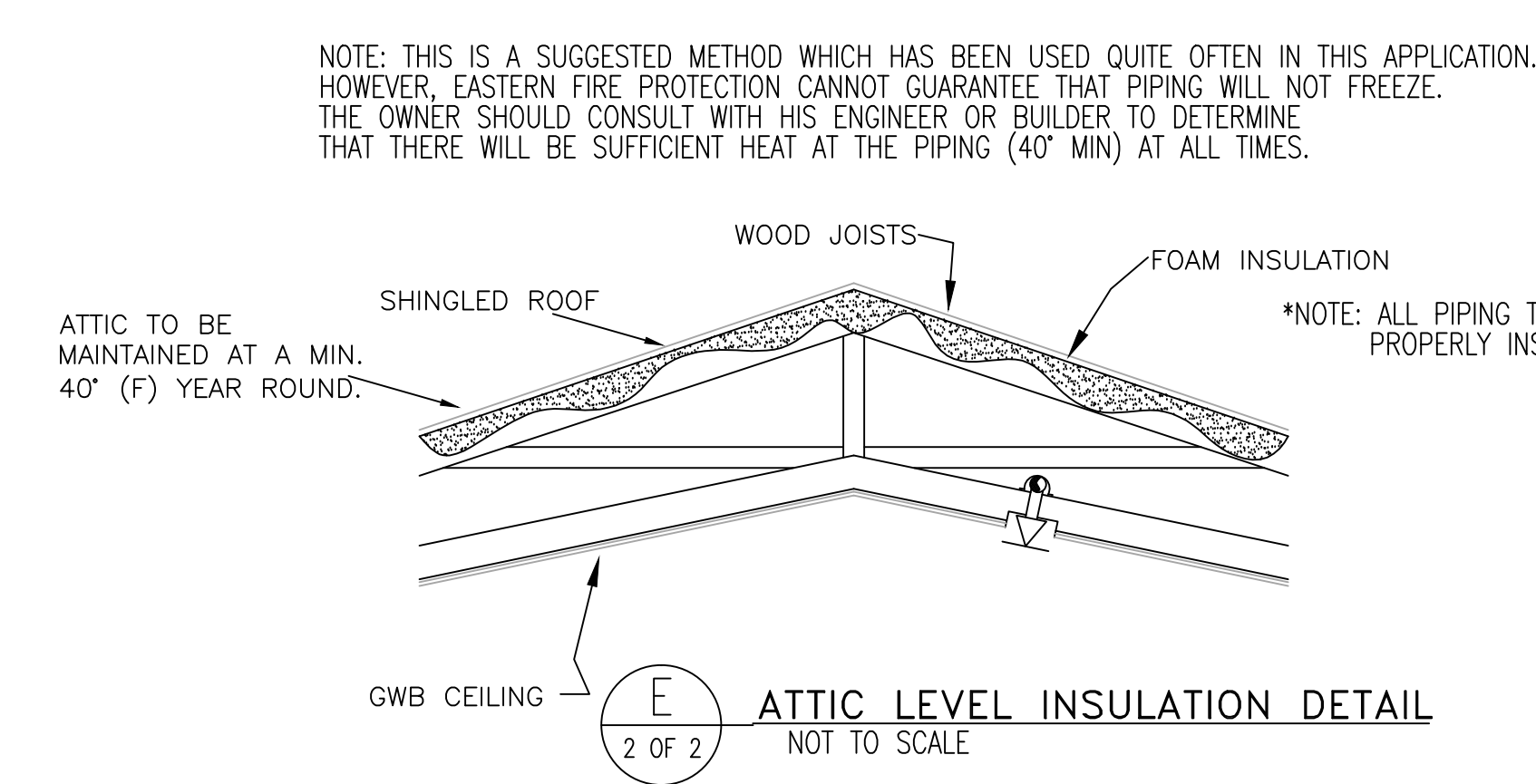
**STAIR SECTION DETAIL "B"**

SCALE: N.T.S.



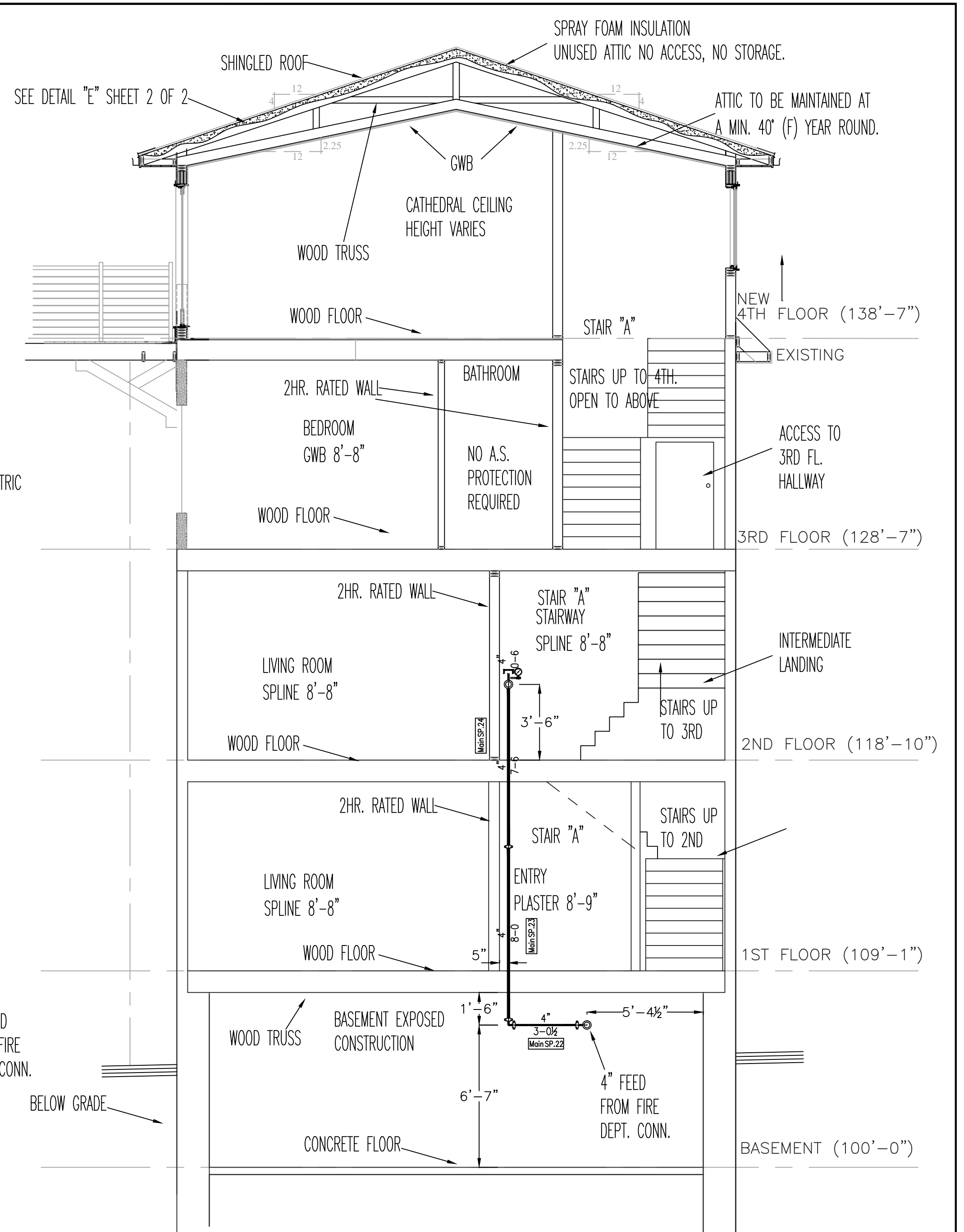
**STANDPIPE FDC DETAIL "SP-2"**

NOT TO SCALE



**ATTIC LEVEL INSULATION DETAIL**

NOT TO SCALE



**WATER DATA**

STATIC 60 PSI  
 RESIDUAL 55 PSI  
 FLOW 871 GPM  
 ELEVATION: 82'-0"  
 DATE: 7/16/12  
 TIME: 12:30 PM

INFORMATION PROVIDED BY: PORTLAND WATER DISTRICT

NOTE: UNDERGROUND TO BE INSTALLED, TESTED AND FLUSHED IN ACCORDANCE WITH NFPA #24 (ALL UNDERGROUND PIPING TO BE DONE BY OTHERS).

**WATER SUPPLY PLAN**

SCALE: N.T.S.

**GENERAL NFPA #13R NOTES**

SPRINKLER SYSTEM INSTALLATION TO COMPLY WITH NFPA PAMPHLET # 13R 2010

EXPOSED LINE PIPING (1"-2") TO BE BLACK SCHEDULE 40 JOINED BY THREADED DUCTILE IRON FITTINGS

EXPOSED MAIN PIPING (2 1/2"-4") TO BE BLACK SCHEDULE 10 WITH GROOVED ENDS & WELDED OUTLETS JOINED BY MECHANICAL GROOVED FITTINGS.

CONCEALED LINE PIPING (1"-2") TO BE CPVC PLASTIC PIPE JOINED WITH GLUED CPVC PLASTIC FITTINGS

OWNER TO PROVIDE SUFFICIENT HEAT THROUGHOUT BUILDING TO PREVENT FREEZING OF WATER FILLED SPRINKLER PIPING AND EQUIPMENT. ( 40° F )

- SPRINKLERS ARE NOT REQUIRED IN THE FOLLOWING AREAS AS PER NFPA 13R, 2010 EDITION.
  - A. BATHROOMS NOT EXCEEDING 55 SQ. FT.
  - B. SMALL CLOSETS WITHIN THE DWELLING UNIT LESS THAN 24 SQ. FT. IN AREA W/THE LEAST DIMENSION NOT EXCEEDING 3'0" SQ. FT.
  - C. OPEN ATTACHED PORCHES, BALCONIES, CORRIDORS AND STAIRS
  - D. CRAWL SPACES, ATTICS, PENTHOUSE EQUIPMENT & ELEVATOR MACHINE ROOMS, FLOOR/CEILING SPACES AND ELEVATOR SHAFTS AND OTHER CONCEALED SPACES THAT ARE NOT INTENDED FOR LIVING PURPOSES AND DO NOT CONTAIN FUEL-FIRED EQUIPMENT.
  - E. CLOSETS ON EXTERIOR BALCONIES W/NO DIRECT ACCESS FROM THE DWELLING UNIT.

DATE	REVISIONS	REQUIRED APPROVALS
2/8/13	AS-BUILT	OWNER
4/19/13	AS-BUILT REVISED TO INDICATE FRONT STAND PIPE	STATE FIRE MARSHAL PORTLAND FIRE DEPARTMENT
		DRAWN BY: RJP NICET LEVEL: CERT.#
		CHECKED BY: W.A.F. NICET LEVEL III: CERT.# 095574
		CONTRACTOR LICENSE # 101
		CONTRACTOR RMS # 368

**43 CUMBERLAND AVE.**  
 43 CUMBERLAND AVE. PORTLAND , ME

CONTRACT WITH: MUNJOY HILL HOMES

**EASTERN FIRE PROTECTION**  
 AUBURN/LEWISTON INDUSTRIAL AIRPARK, AUBURN, MAINE 04210

FIRE SPRINKLER PLANS & DETAILS

DWG. NO. 2 OF 2

JOB NUMBER AU-4962

SCALE AS NOTED

DATE 12/21/12