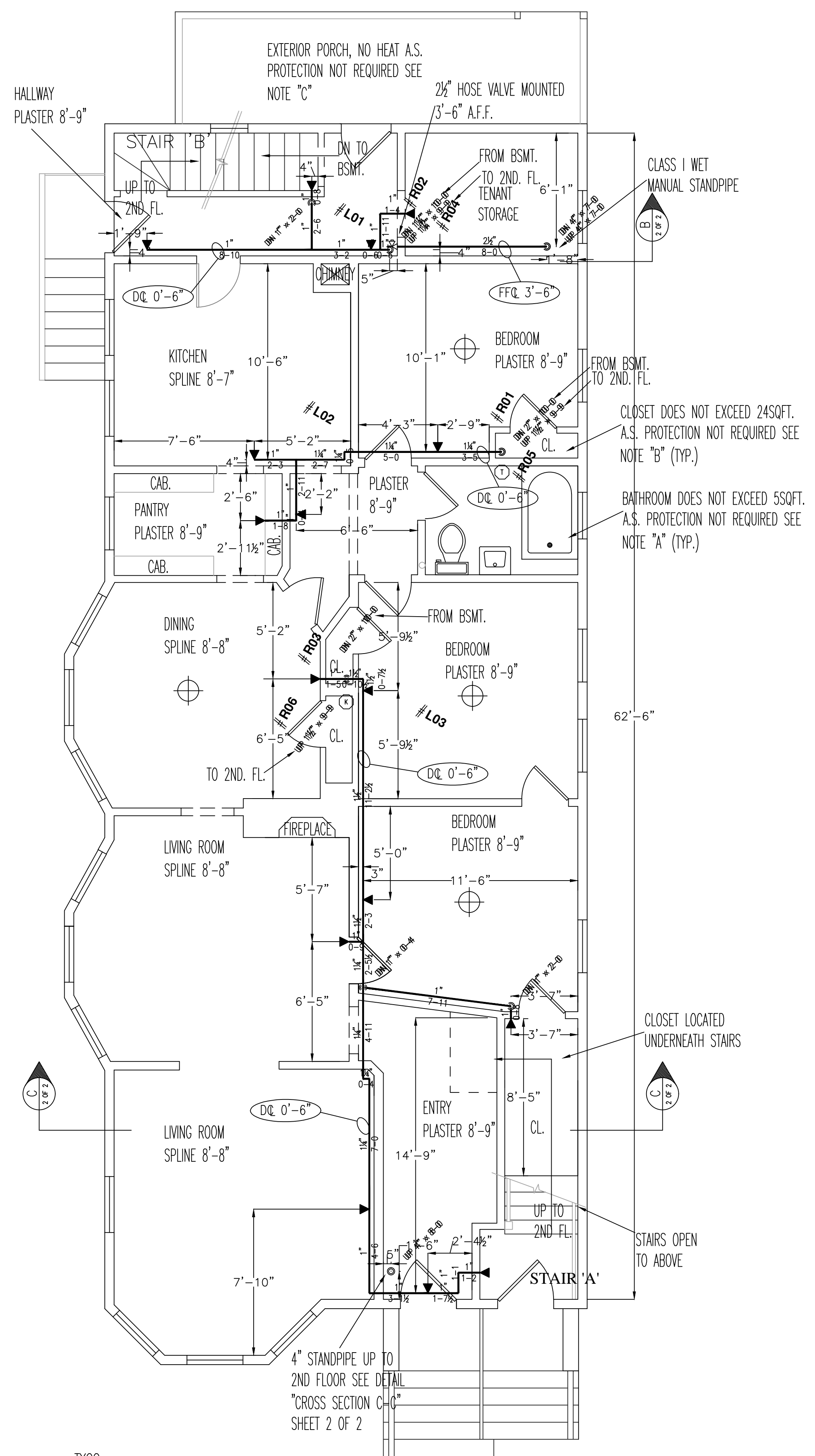
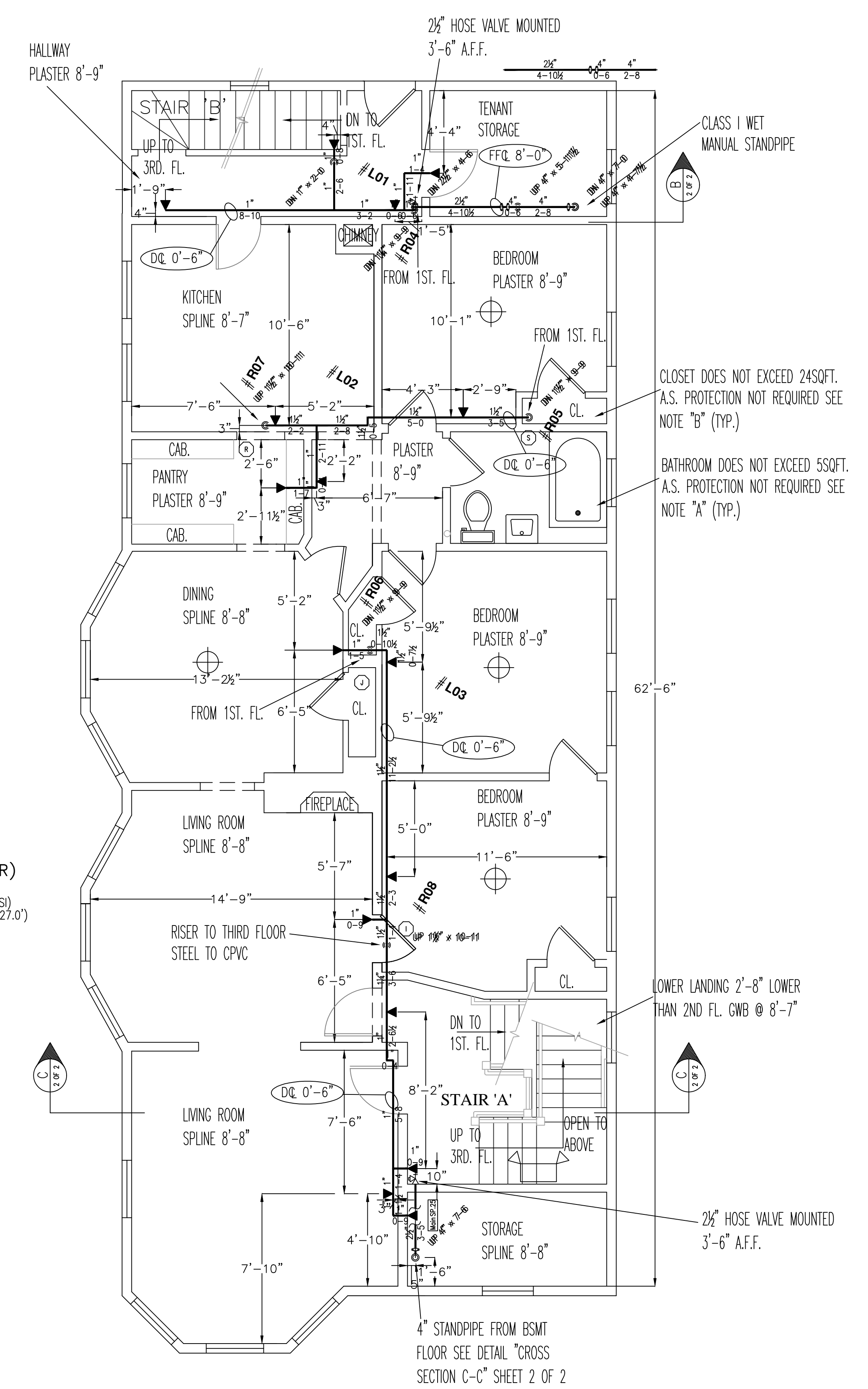


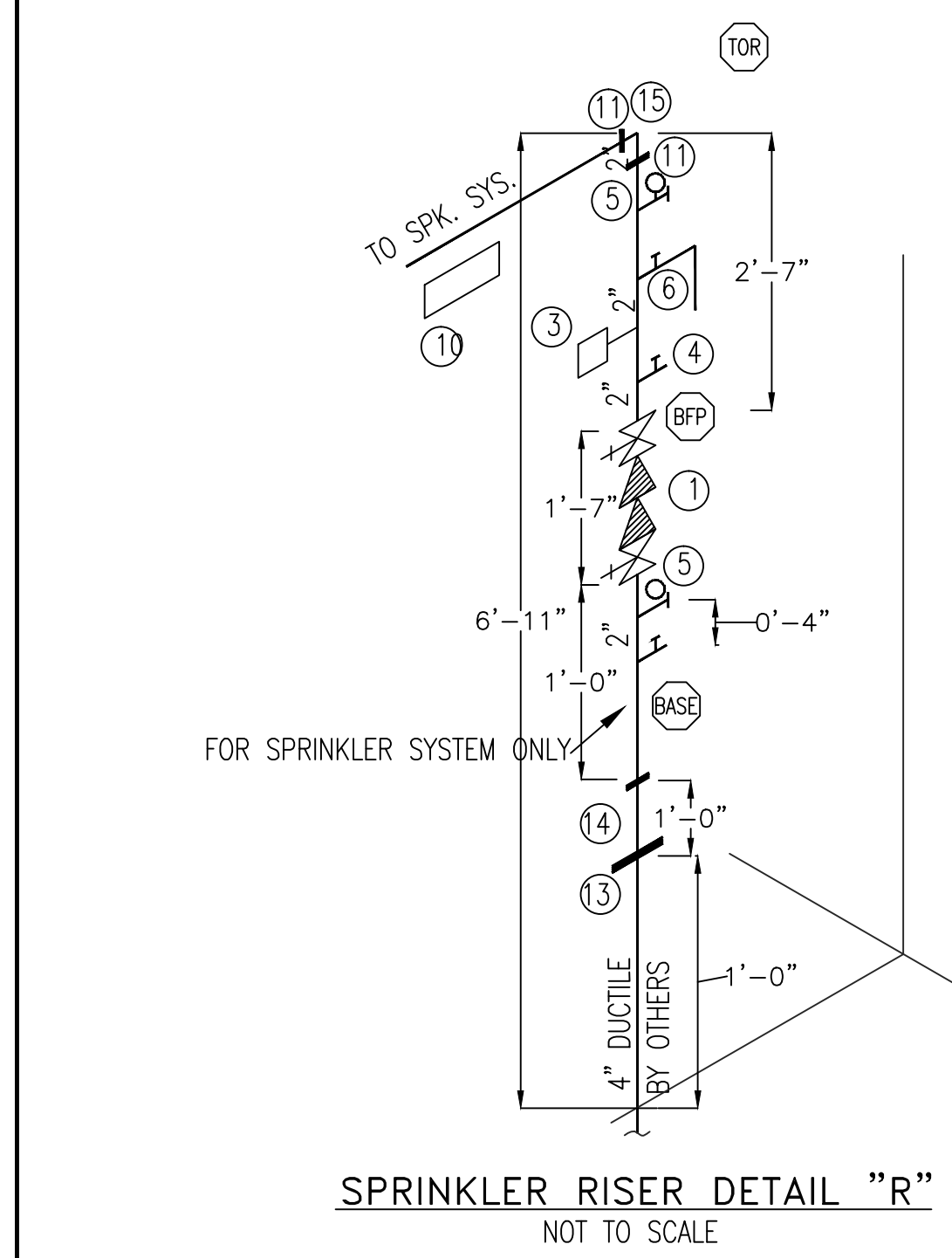
FIRE SPRINKLER PLAN - BASEMENT
 SCALE: 1/4"=1'-0"
 AREA PROTECTED: 1,400 SQ.FT.
 FINISH FLOOR ELEVATION : 100'-0"
 COLOR : WHITE



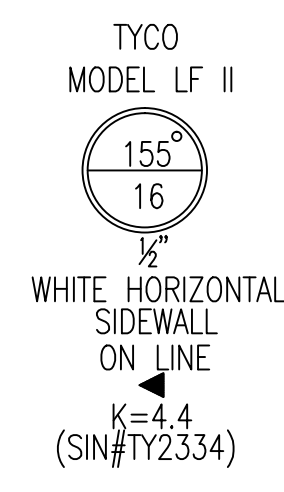
FIRE SPRINKLER PLAN - FIRST FLOOR
 SCALE: 1/4"=1'-0"
 AREA PROTECTED: 1,400 SQ.FT.
 FINISH FLOOR ELEVATION : 109'-1"
 COLOR : BLUE



FIRE SPRINKLER PLAN - SECOND FLOOR
 SCALE: 1/4"=1'-0"
 AREA PROTECTED: 1,400 SQ.FT.
 FINISH FLOOR ELEVATION : 118'-10"
 COLOR : RED



- LEGEND**
- 1 2" AMES 2000B BACKFLOW PREVENTER W/ 2" BUTTERBALL VALVES. CHAINED & LOCKED OPEN.
 - 2 NOT USED
 - 3 2" POTTER MOD. VSR-2 FLOW SWITCH.
 - 4 1/2" AUXILIARY DRAIN VALVE.
 - 5 WATER PRESSURE GAUGE W/ 1/4" THREE-WAY VALVE.
 - 6 1" MAIN DRAIN & ALARM TEST VALVE.
 - 7 2" SWING CHECK VALVE. (SEE BSMT. LEVEL PLAN)
 - 8 2 1/2"x2" FIRE DEPARTMENT CONNECTION W/ PLATE & CAP. (SEE BSMT. PLAN)
 - 9 ELECTRIC BELL. (SEE BSMT. PLAN)
 - 10 SPARE HEAD BOX WITH WRENCH & 3 SPARE SPRINKLERS OF EACH TYPE.
 - 11 2" GROOVED COUPLING
 - 12 1/2" AUTOMATIC BALL DRIP (SEE BSMT. PLAN)
 - 13 4"x9" UNI-FLANGE (BY OTHERS)
 - 14 2" FLANGE x GROOVE SPOOL PIECE
 - 15 2" GROOVED 90° ELL.
- ALL ELECTRICAL WIRING BY OTHERS.



TYCO LF II
 LF II RESIDENTIAL RECESSED PENDENT SPRINKLER DESIGN REQUIREMENTS FOR WET SYSTEM

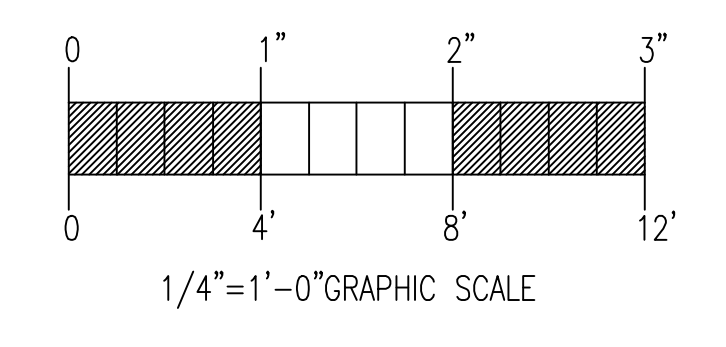
MODEL	COVERAGE AREA MAX. SPACE BETWEEN SPRINKLERS	MINIMUM DESIGN FLOW (PRESSURE) FOR HORIZONTAL CEILING (MAX. 2" RISE FOR 12" RUN)	MINIMUM DESIGN FLOW (PRESSURE)	
			FOR HORIZONTAL CEILING (MAX. 4" RISE FOR 12" RUN)	FOR HORIZONTAL CEILING (MAX. 8" RISE FOR 12" RUN)
LF II RECESSED PENDENT	12 x 12	13GPM(7.0psi)	13GPM(7.0psi)	13GPM(7.0psi)
	14 x 14	13GPM(7.0psi)	13GPM(7.0psi)	13GPM(7.0psi)
	16 x 16	13GPM(7.0psi)	13GPM(7.0psi)	13GPM(7.0psi)
	18 x 18	17GPM(12.0psi)	17GPM(12.0psi)	17GPM(12.0psi)
	20 x 20	20GPM(16.7psi)	20GPM(16.7psi)	21GPM(18.4psi)

K-FACTOR = 4.9, 1/2" N.P.T.
 MAXIMUM SPACING FROM WALL 8'-0"
 MAXIMUM SPACING BETWEEN HEADS 8'-0"
 MAXIMUM SPACING BETWEEN HEADS 10'-0"

TYCO LF II
 LF II RESIDENTIAL HORIZONTAL SIDEWALL SPRINKLER DESIGN REQUIREMENTS

MODEL	COVERAGE AREA WIDTH x LENGTH FT. x FT.	MAXIMUM SPACING FT. (M)	MINIMUM DESIGN FLOW AND RESIDUAL REQUIREMENTS			
			TOP OF DEFLECTOR TO CEILING: 4 TO 6 INCHES	175F/79°C	155F/68°C	175F/79°C
LF II HORIZONTAL SIDEWALL	12 x 12	12"	13GPM(8.7psi)	13GPM(8.7psi)	13GPM(8.7psi)	13GPM(8.7psi)
	14 x 14	14"	14GPM(10.1psi)	14GPM(10.1psi)	14GPM(10.1psi)	14GPM(10.1psi)
	16 x 16	16"	16GPM(13.2psi)	16GPM(13.2psi)	17GPM(14.9psi)	17GPM(14.9psi)
	16 x 16	16"	19GPM(18.6psi)	19GPM(18.6psi)	20GPM(20.7psi)	20GPM(20.7psi)
	16 x 20	16"	23GPM(27.3psi)	23GPM(27.3psi)	23GPM(27.3psi)	23GPM(27.3psi)
	18 x 18	18"	23GPM(27.3psi)	23GPM(27.3psi)	23GPM(27.3psi)	23GPM(27.3psi)
	18 x 20	18"	26GPM(34.9psi)	26GPM(34.9psi)	26GPM(34.9psi)	26GPM(34.9psi)
	18 x 20	18"	26GPM(34.9psi)	26GPM(34.9psi)	26GPM(34.9psi)	26GPM(34.9psi)

FOR HORIZONTAL CEILING (MAXIMUM 8 INCH RISE FOR 12 INCH RUN)
 K-FACTOR = 4.4, 1/2" N.P.T.
 MAXIMUM DISTANCE FROM SIDEWALL 8'-0"
 MAXIMUM THROW 16'-0"
 MINIMUM SPACING BETWEEN HEADS 8'-0"



GENERAL NFPA #13R NOTES

1. SPRINKLERS ARE NOT REQUIRED IN THE FOLLOWING AREAS AS PER NFPA 13R, 2010 EDITION.
 - A. BATHROOMS NOT EXCEEDING 55 SQ. FT.
 - B. SMALL CLOSETS WITHIN THE DWELLING UNIT LESS THAN 24 SQ. FT. IN AREA W/THE LEAST DIMENSION NOT EXCEEDING 3'0"
 - C. OPEN ATTACHED PORCHES, BALCONIES, CORRIDORS AND STAIRS
 - D. CRAWL SPACES, ATTICS, PENTHOUSE EQUIPMENT & ELEVATOR MACHINE ROOMS, FLOOR/CEILING SPACES AND ELEVATOR SHAFTS AND OTHER CONCEALED SPACES THAT ARE NOT INTENDED FOR LIVING PURPOSES AND DO NOT CONTAIN FUEL-FIRED EQUIPMENT.
 - E. CLOSETS ON EXTERIOR BALCONIES W/NO DIRECT ACCESS FROM THE DWELLING UNIT.

SPRINKLER SYSTEM INSTALLATION TO COMPLY WITH NFPA PAMPHLET # 13R, 2010
 EXPOSED LINE PIPING (1"-2") TO BE BLACK SCHEDULE 40 JOINED BY THREADED DUCTILE IRON FITTINGS
 EXPOSED MAIN PIPING (2 1/2"-4") TO BE BLACK SCHEDULE 10 WITH GROOVED ENDS & WELDED OUTLETS JOINED BY MECHANICAL GROOVED FITTINGS.
 CONCEALED LINE PIPING (1"-2") TO BE CPVC PLASTIC PIPE JOINED WITH GLUED CPVC PLASTIC FITTINGS
 OWNER TO PROVIDE SUFFICIENT HEAT THROUGHOUT BUILDING TO PREVENT FREEZING OF WATER FILLED SPRINKLER PIPING AND EQUIPMENT. (40° F)

DATE	REVISIONS	REQUIRED APPROVALS
2/8/13	AS-BUILT	OWNER
4/19/13	AS-BUILT REVISED TO INDICATE FRONT STAND PIPE	STATE FIRE MARSHAL PORTLAND FIRE DEPARTMENT
		DRAWN BY RJP NICET LEVEL CERT.#
		CHECKED BY W.A.F. NICET LEVEL III CERT.# 095574
		CONTRACTOR LICENSE # 101
		CONTRACTOR RMS # 368

43 CUMBERLAND AVE.
 43 CUMBERLAND AVE. PORTLAND , ME

CONTRACT WITH: MUNJOY HILL HOMES

EASTERN FIRE PROTECTION
 AUBURN/LEWISTON INDUSTRIAL AIRPARK, AUBURN, MAINE 04210

FIRE SPRINKLER PLANS & DETAILS
 DWG. NO. 1 OF 2
 JOB NUMBER AU-4962
 SCALE AS NOTED
 DATE 12/31/12