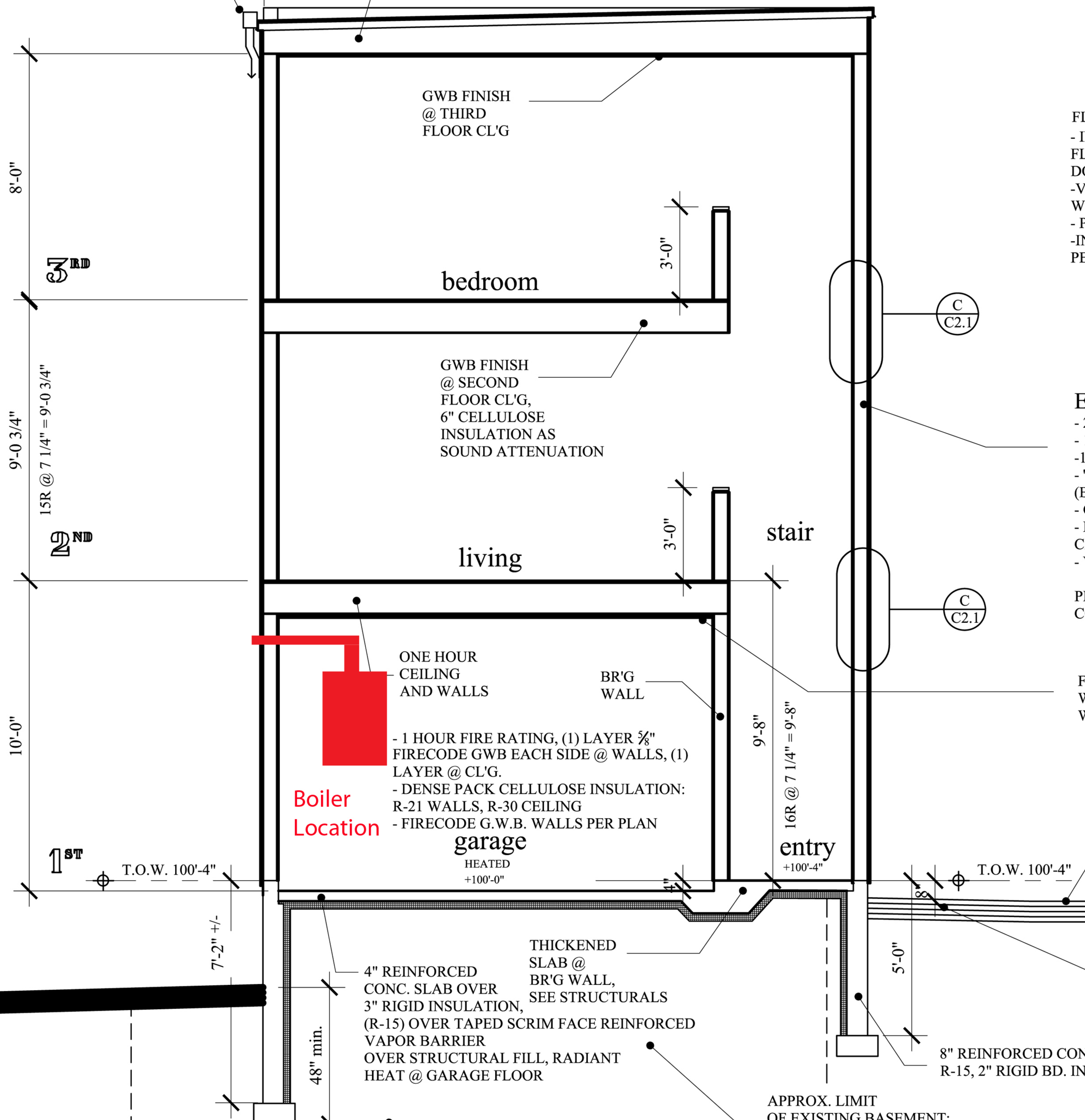


← SLOPE: 1/4" = 1'-0"



GWB FINISH @ THIRD FLOOR CL'G

bedroom

GWB FINISH @ SECOND FLOOR CL'G, 6" CELLULOSE INSULATION AS SOUND ATTENUATION

living

stair

ONE HOUR CEILING AND WALLS

BR'G WALL

Boiler Location

- 1 HOUR FIRE RATING, (1) LAYER 5/8" FIRECODE GWB EACH SIDE @ WALLS, (1) LAYER @ CL'G.
- DENSE PACK CELLULOSE INSULATION: R-21 WALLS, R-30 CEILING
- FIRECODE G.W.B. WALLS PER PLAN

garage

HEATED +100'-0"

entry

+100'-4"

4" REINFORCED CONC. SLAB OVER 3" RIGID INSULATION, (R-15) OVER TAPED SCRIM FACE REINFORCED VAPOR BARRIER OVER STRUCTURAL FILL, RADIANT HEAT @ GARAGE FLOOR

THICKENED SLAB @ BR'G WALL, SEE STRUCTURALS

8" REINFORCED CONC. R-15, 2" RIGID BD. INS.

APPROX. LIMIT OF EXISTING BASEMENT;

FL  
- IN  
FL  
DO  
- VY  
WI  
- PA  
- IN  
PE

E  
- 2  
- 1  
- 1/  
- 'D  
(B  
- C  
- F  
CE  
- V

PR  
CO

FI  
W  
W

8'-0"

9'-0 3/4"

10'-0"

3<sup>RD</sup>

2<sup>ND</sup>

1<sup>ST</sup>

T.O.W. 100'-4"

T.O.W. 100'-4"

7'-2" +/-

48" min.

9'-8"

16R @ 7 1/4" = 9'-8"

5'-0"

C  
C2.1

C  
C2.1