

© 2004 TFH ARCHITECTS

**SUMNER COURT**  
A QUALITY RESIDENTIAL DEVELOPMENT BY FORT SUMNER, LLC  
117 SHERIDAN STREET, PORTLAND, MAINE



TFH ARCHITECTS  
100 COMMERCIAL STREET  
PORTLAND MAINE 04101  
TELEPHONE 207 775 6141  
ARCHITECTURE PLANNING

CONSULTANTS:  
**Structural Design Consulting**  
22 Oakmont Drive  
Old Orchard Beach, ME 04064  
207-934-8038

REVISIONS:

DATE: January 11, 2005

PROJECT No. 0418

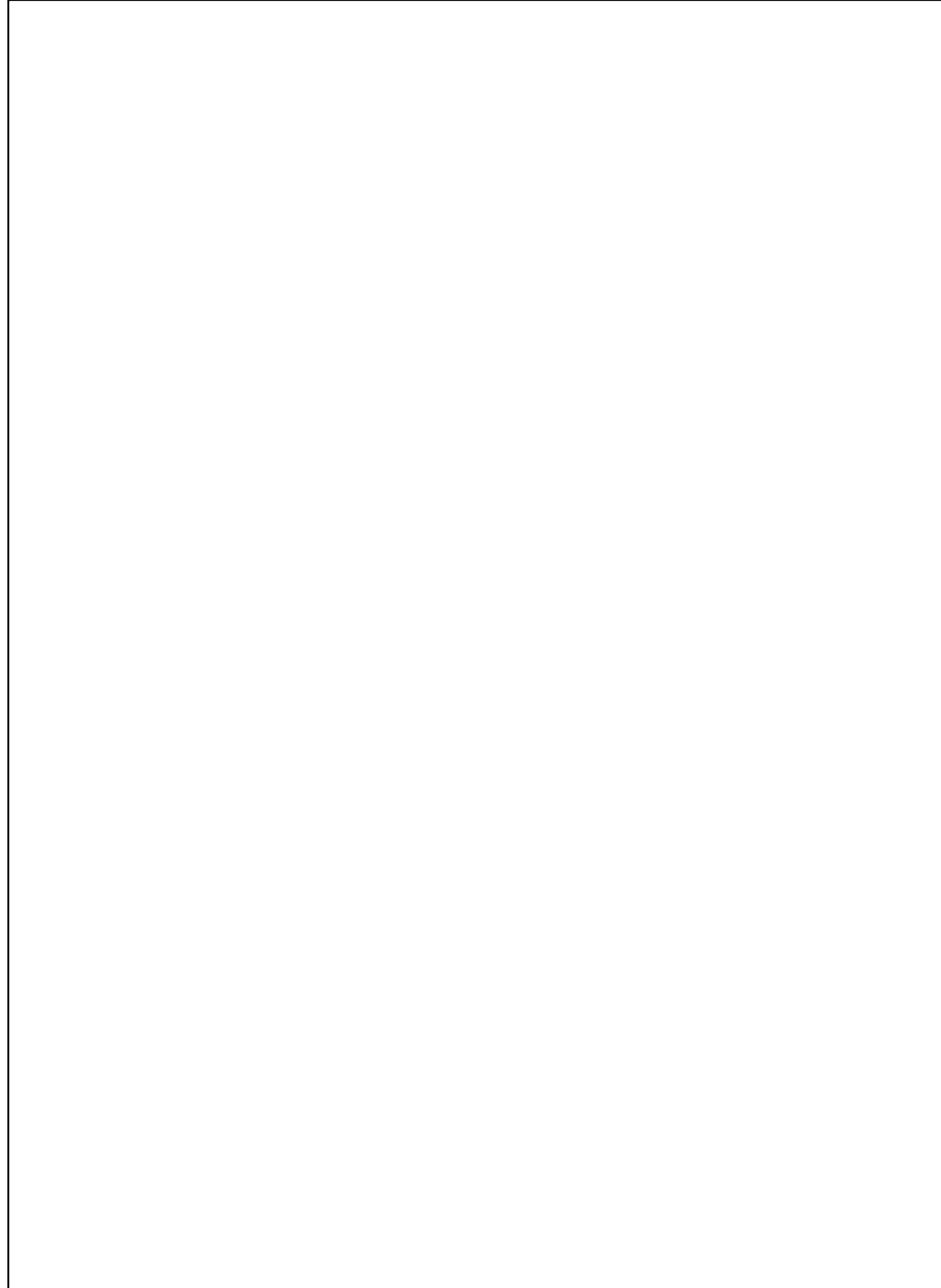
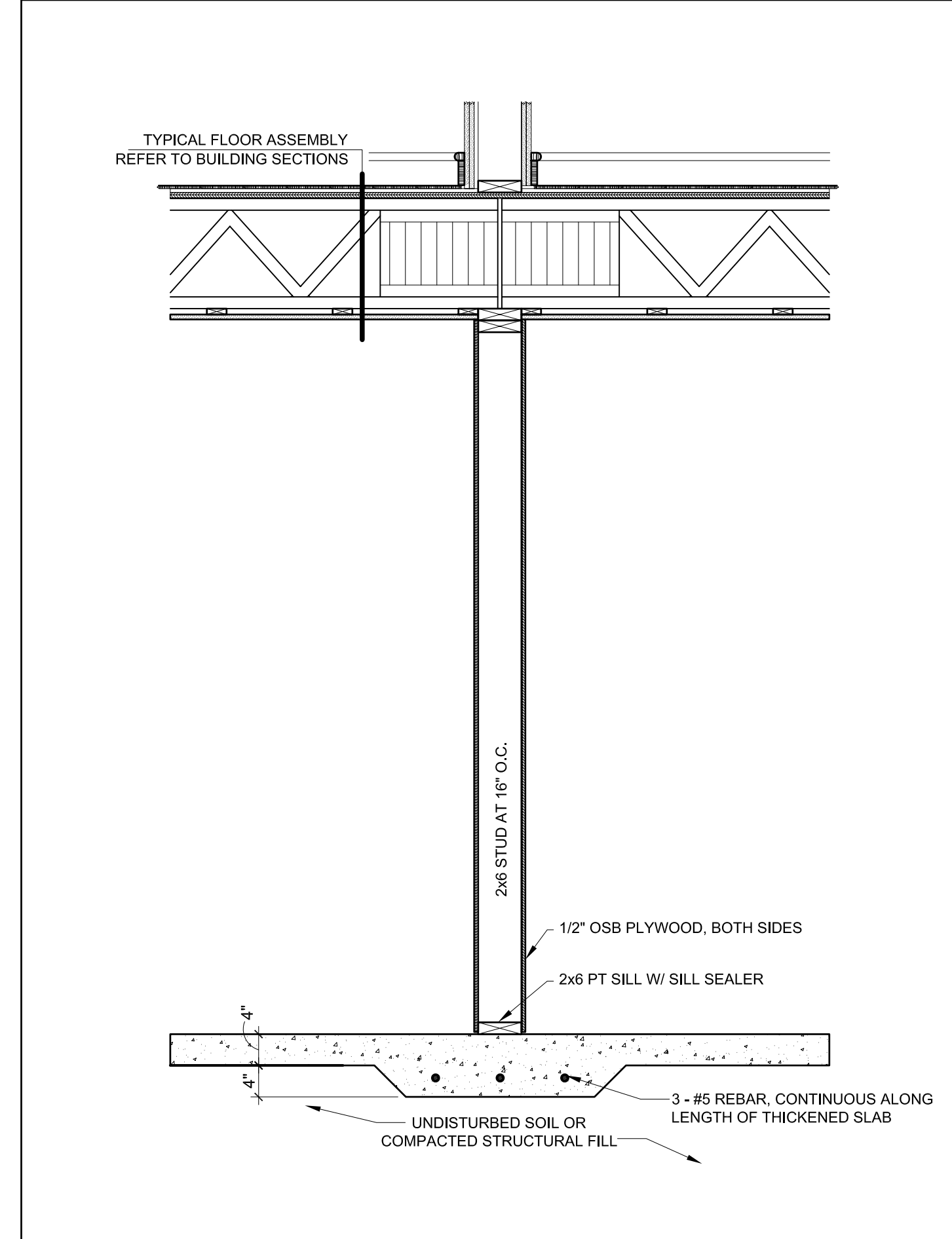
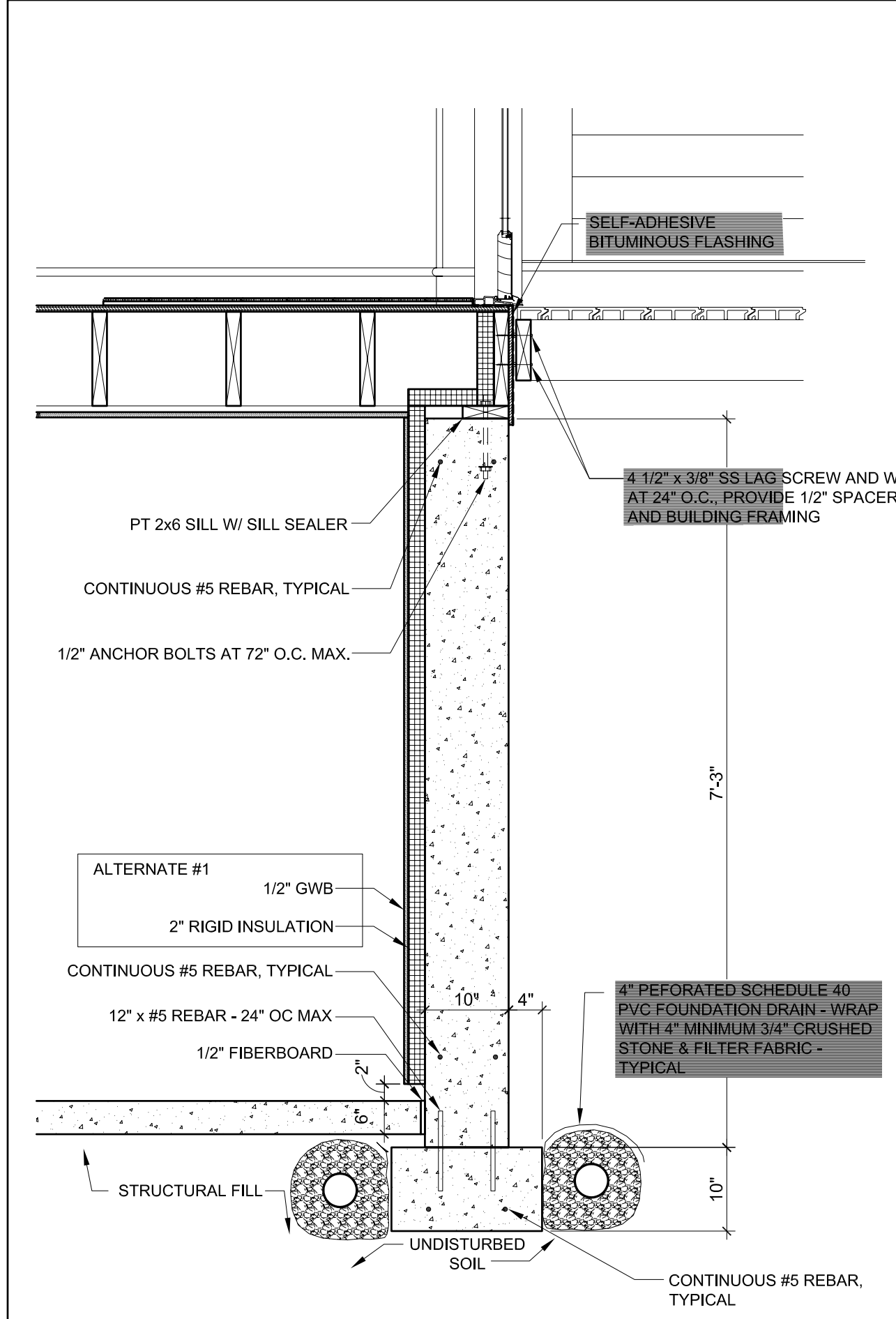
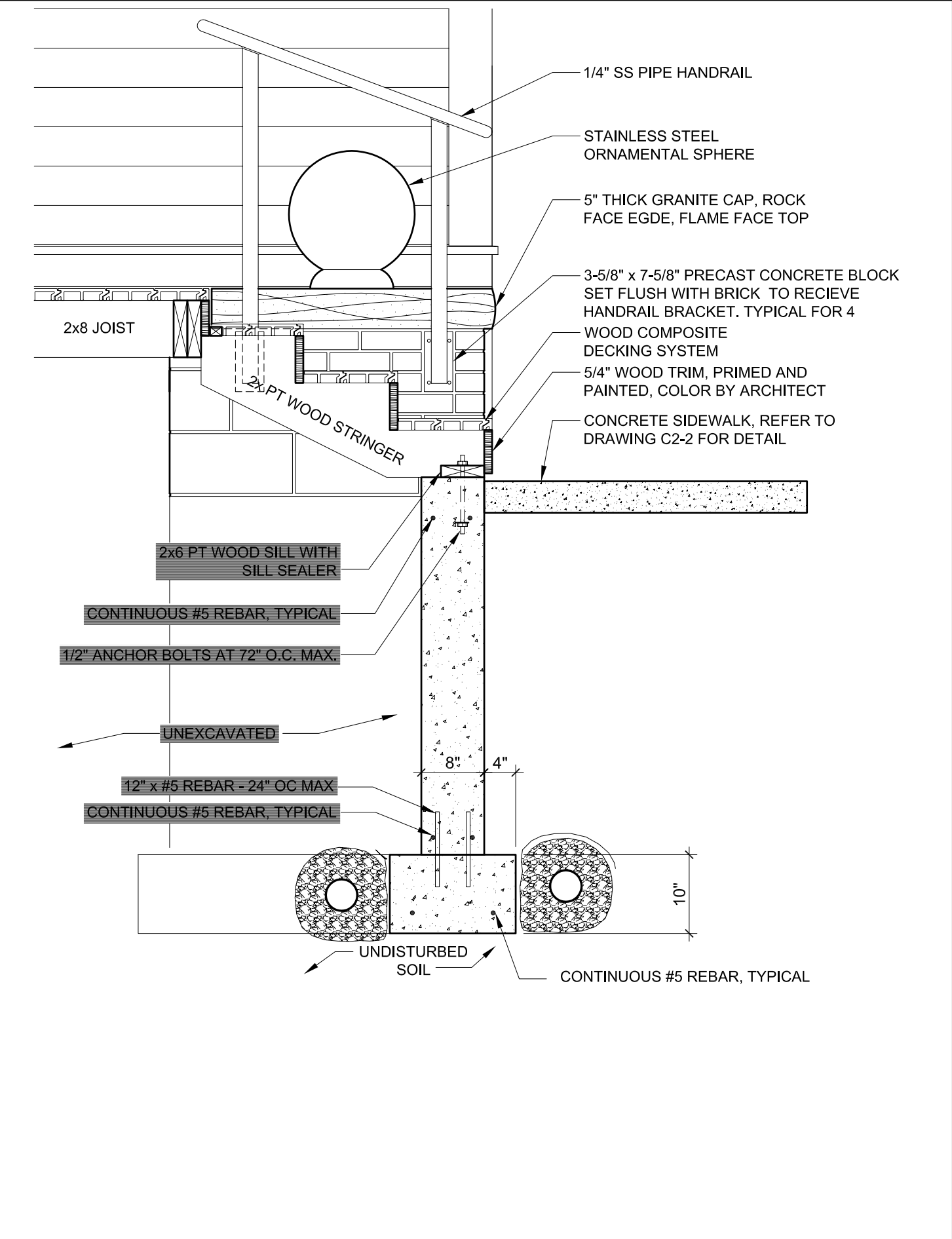
DRAWN BY: CSC, TST

CHECKED BY: TST

SCALE: As Noted

SHEET TITLE:  
Foundation Details

**A4-2**

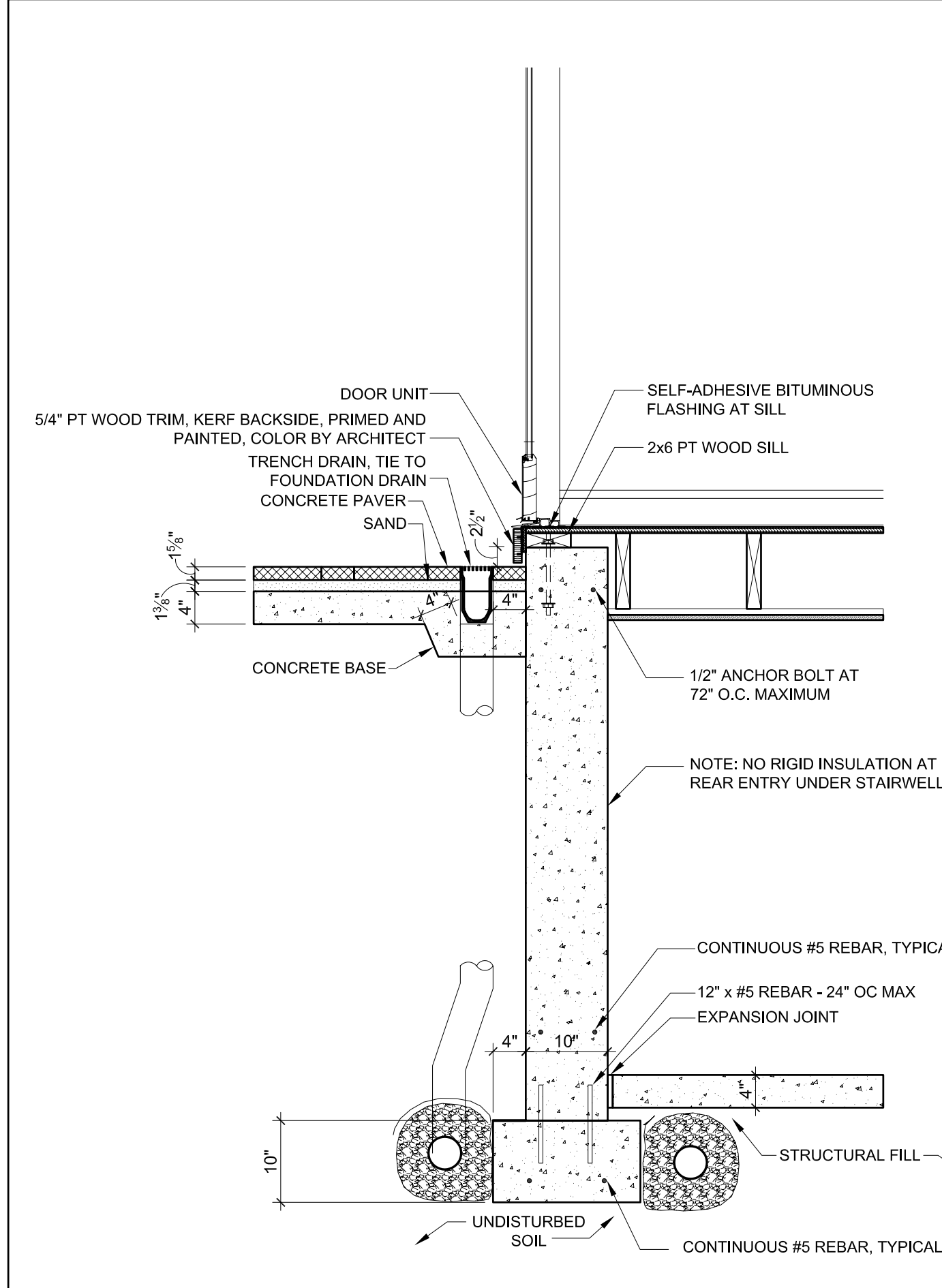
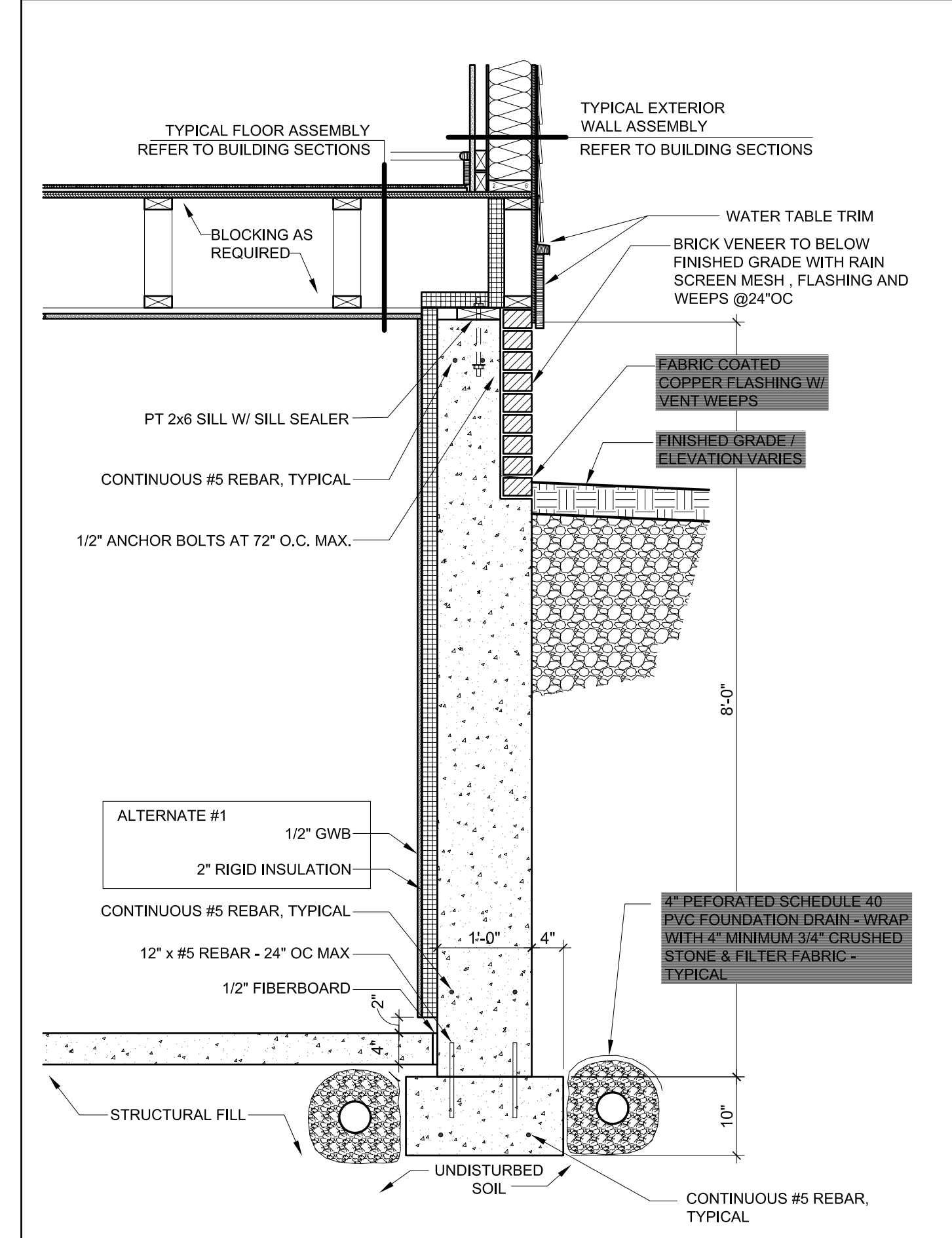
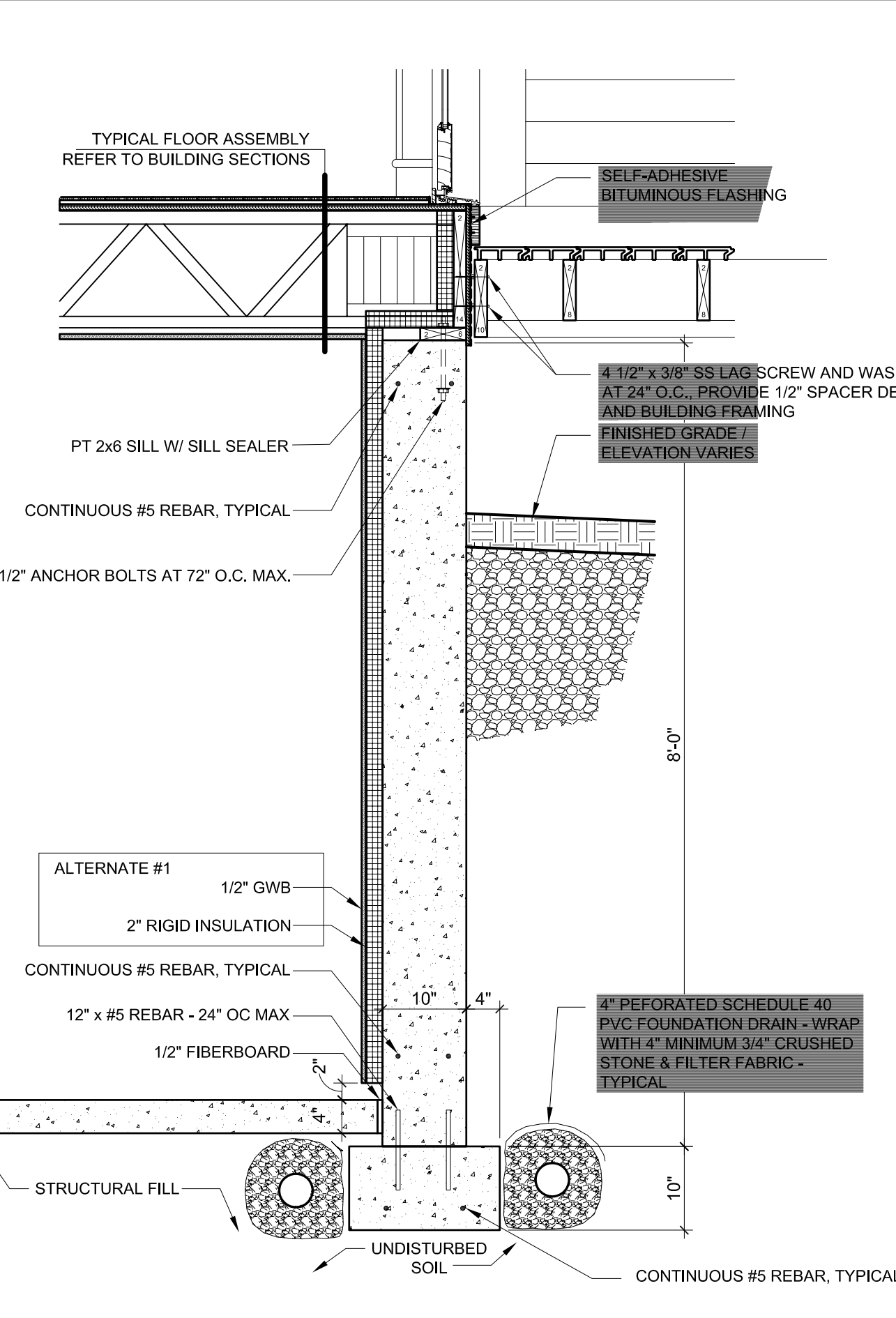
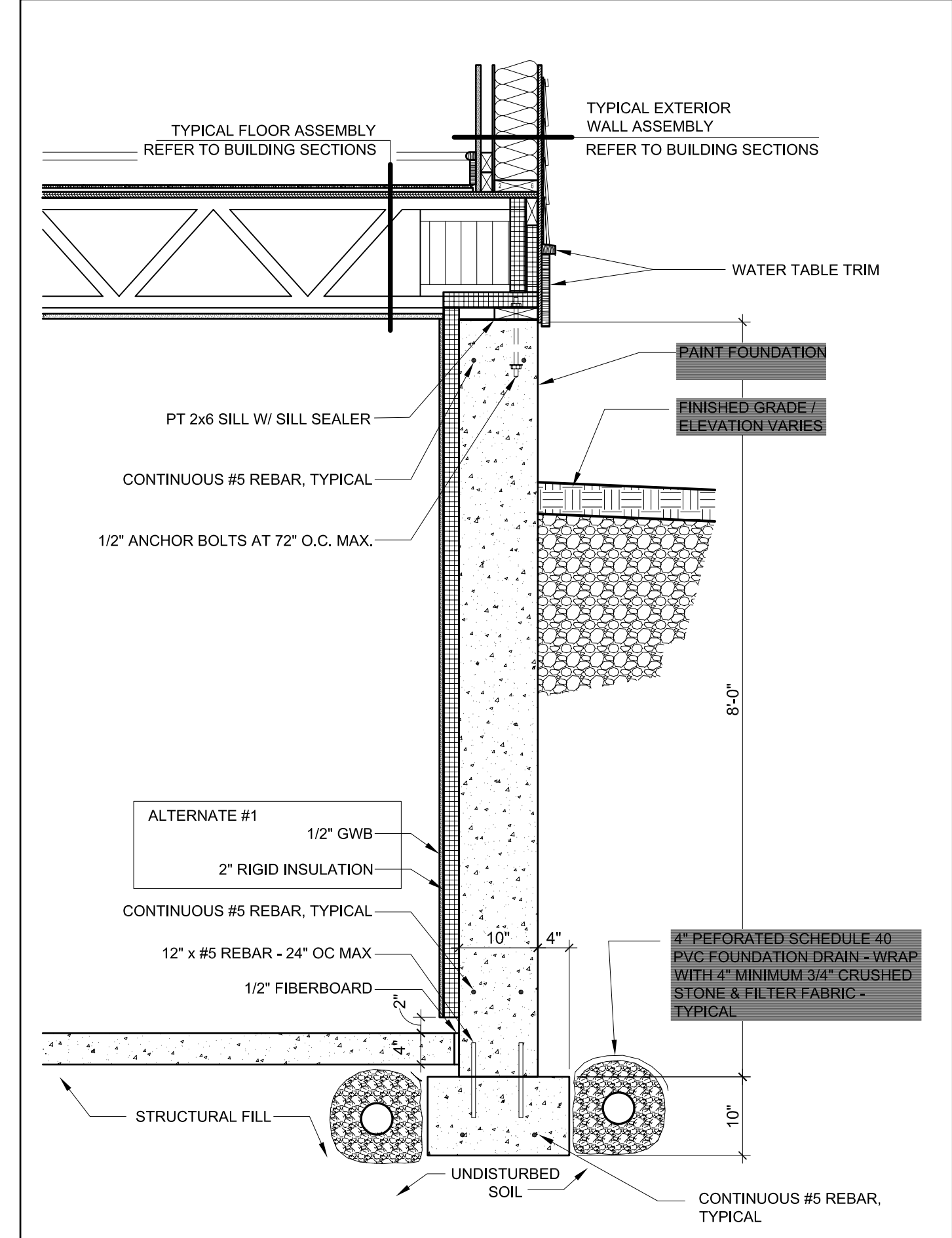


**5 FOUNDATION WALL AT FRONT ENTRY**  
A4-2 SCALE: 3/4" = 1'-0"

**6 FOOTING AT BEARING WALL**  
A4-2 SCALE: 3/4" = 1'-0"

**7 RESERVED**  
A4-2 SCALE: 3/4" = 1'-0"

**4 FOUNDATION WALL AT REAR ENTRY**  
A4-2 SCALE: 3/4" = 1'-0"



**1 FOUNDATION WALL, TYPICAL**  
A4-2 SCALE: 3/4" = 1'-0"

**2 FOUNDATION WALL AT DECK**  
A4-2 SCALE: 3/4" = 1'-0"

**3 FOUNDATION WALL AT SHERIDAN STREET**  
A4-2 SCALE: 3/4" = 1'-0"

**4 FOUNDATION WALL AT REAR ENTRY**  
A4-2 SCALE: 3/4" = 1'-0"