

© 2005 TFH ARCHITECTS

SUMNER COURT
A QUALITY RESIDENTIAL DEVELOPMENT BY FORT SUMNER, LLC
117 SHERIDAN STREET, PORTLAND, MAINE

TFH ARCHITECTS
100 COMMERCIAL STREET
PORTLAND MAINE 04101
TELEPHONE 207 775 6141
ARCHITECTURE PLANNING

CONSULTANTS:
STRUCTURAL:
Structural Design Consulting
22 Oakmont Drive
Old Orchard Beach, ME 04064
207-934-8038

REVISIONS:

DATE: February 3, 2005

PROJECT No. 0418

DRAWN BY: CSC

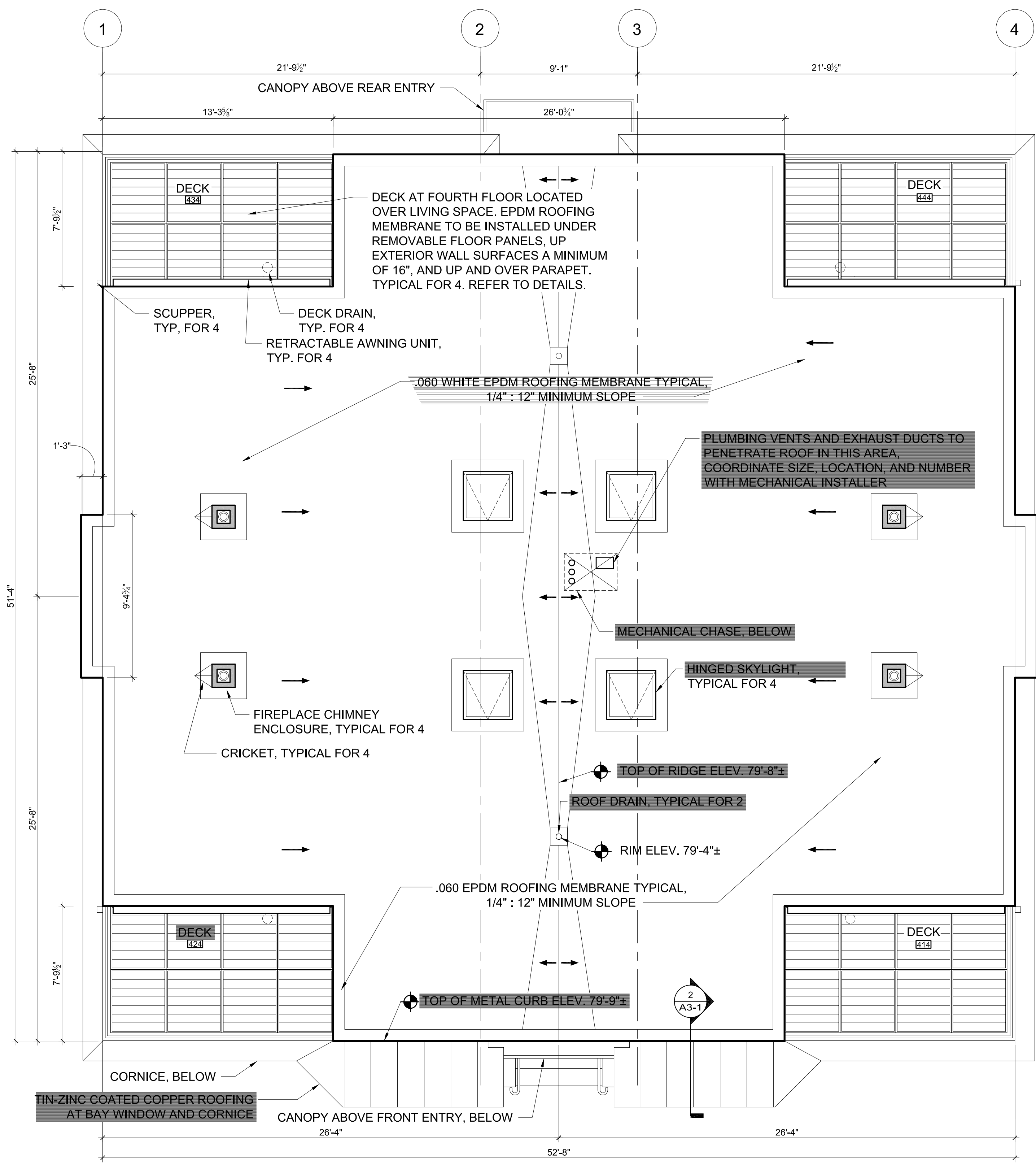
CHECKED BY: TST

SCALE: As Noted

SHEET TITLE:
Roof Plan

A1-4

- GENERAL NOTES:
1. TYPICAL ROOF ASSEMBLY, FROM EXTERIOR TO INTERIOR
 - A. EPDM RUBBER ROOFING
 - B. FIBER BOARD
 - C. R-38 AVERAGE, TAPERED RIGID INSULATION
 - D. ROOF DECKING, 5/8 T&G CDX PLYWOOD
 - E. ROOF TRUSS, PARALLEL CHORD
 2. METAL FLASHING TO BE ZINC COATED COPPER EXCEPT WHERE NOTED



1 ROOF PLAN
A1-4 SCALE: 1/4" = 1'-0"

