

© 2005 TFH ARCHITECTS

SUMNER COURT
 A QUALITY RESIDENTIAL DEVELOPMENT BY FORT SUMNER, LLC
 117 SHERIDAN STREET, PORTLAND, MAINE

TFH ARCHITECTS
 100 COMMERCIAL STREET
 PORTLAND MAINE 04101
 TELEPHONE 207 775 6141
 ARCHITECTURE PLANNING

CONSULTANTS:
STRUCTURAL:
 Structural Design Consulting
 22 Oakmont Drive
 Old Orchard Beach, ME 04064
 207-934-8038

REVISIONS:

DATE: February 3, 2005

PROJECT No. 0418

DRAWN BY: CSC

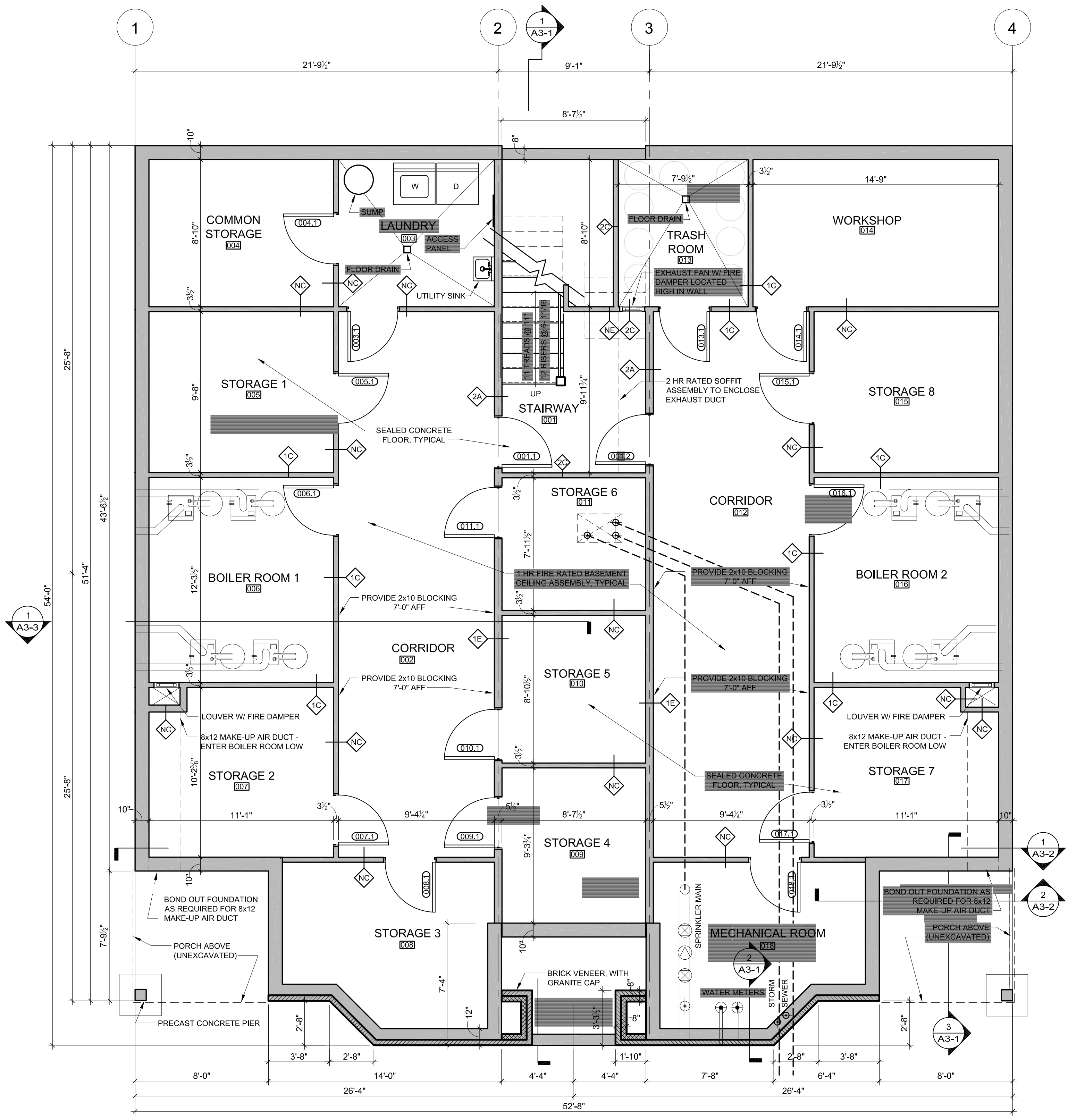
CHECKED BY: TST

SCALE: As Noted

SHEET TITLE:
Basement Plan

A1-1

PARTITION TYPES			UL LISTING
NON-RATED PARTITIONS			
NA		5/8" GWB 2x4 WOOD STUD, 16" O.C. BATT SOUND INSULATION 5/8" GWB	N/A
NB		5/8" GWB 2x4 WOOD STUD, 16" O.C. BATT SOUND INSULATION 5/8" GWB	N/A
NC		1/2" OSB PLYWOOD 2x4 WOOD STUD, 16" O.C.	N/A
ND		5/8" GWB 2x4 WOOD STUD, 16" O.C. 5/8" GWB	N/A
NE		5/8" GWB, 2 LAYERS 2x4 WOOD STUD, 16" O.C. 5/8" GWB	N/A
1 HOUR RATED PARTITIONS			
1A		5/8" TYPE-X GWB 12" O.C., CROSS-BRACED AT MID-HEIGHT BATT SOUND INSULATION 5/8" TYPE-X GWB	UL DESIGN NO. U333
1B		5/8" TYPE-X GWB 2x4 WOOD STUD, 16" O.C., CROSS-BRACED AT MID-HEIGHT BATT SOUND INSULATION 5/8" TYPE-X GWB	UL DESIGN NO. U333
1C		5/8" TYPE-X GWB 2x4 WOOD STUD, 16" O.C. 5/8" TYPE-X GWB	UL DESIGN NO. U337
1D		5/8" TYPE-X GWB 1/2" RESILIENT CHANNEL 2x4 WOOD STUD, 12" O.C., CROSS-BRACED AT MID-HEIGHT BATT SOUND INSULATION 1/2" OSB PLYWOOD, GLUED AND SCREWED 2x4 WOOD STUD, 12" O.C., CROSS-BRACED AT MID-HEIGHT BATT SOUND INSULATION 1/2" RESILIENT CHANNEL 5/8" TYPE-X GWB	UL DESIGN NO. U341
1E		5/8" TYPE-X GWB 2x4 WOOD STUD, 16" O.C., CROSS-BRACED AT MID-HEIGHT 5/8" TYPE-X GWB	UL DESIGN NO. U337
1F		EXTERIOR: FIBER CEMENT CLAPBOARD SIDING 1/4" RAMBROCK MEMBRANE W/ AIR INFILTRATION BARRIER EXTERIOR GRADE PLYWOOD 2x6 STUD WALLS AT 16" O.C. ALIGN WITH TRUSSES FOIL FACE BUBBLE INSULATION 2x3 STRAPPING 5/8" TYPE-X GWB INTERIOR: 5/8" TYPE-X GWB	UL DESIGN NO. U356
1G		EXTERIOR: FIBER CEMENT PANELS, REFER TO ELEVATIONS FOR LAYOUT DESIGN 1/4" RAMBROCK MEMBRANE W/ AIR INFILTRATION BARRIER EXTERIOR GRADE PLYWOOD 2x6 STUD WALLS AT 16" O.C. ALIGN WITH TRUSSES 3 1/2" POLYISOCYANURATE FOAM INSULATION FOIL FACE BUBBLE INSULATION 2x3 STRAPPING 5/8" TYPE-X GWB INTERIOR: 5/8" TYPE-X GWB	UL DESIGN NO. U356
2 HOUR RATED PARTITIONS			
2A		5/8" TYPE-X GWB, 2 LAYERS 2x4 WOOD STUD, 12" O.C. AT 1ST FLR, 24" O.C. AT 2ND 3RD AND 4TH FLRS, ALIGN WITH TRUSSES, CROSS BRACE AT MID-HEIGHT BATT SOUND INSULATION 1/2" RESILIENT CHANNEL, SPACED VERTICALLY 24" O.C. 5/8" TYPE-X GWB, 2 LAYERS	UL DESIGN NO. U334
2B		5/8" TYPE-X GWB, 2 LAYERS 2x4 WOOD STUD, 16" O.C. BATT SOUND INSULATION 1/2" RESILIENT CHANNEL, SPACED VERTICALLY 24" O.C. 5/8" TYPE-X GWB, 2 LAYERS	UL DESIGN NO. U334
2C		5/8" TYPE-X GWB, 2 LAYERS 2x4 WOOD STUD, 16" O.C. 1/2" RESILIENT CHANNEL, SPACED VERTICALLY 24" O.C. 5/8" TYPE-X GWB, 2 LAYERS	UL DESIGN NO. U334



1 BASEMENT PLAN
 A1-1 SCALE: 1/4" = 1'-0"

