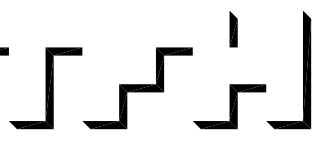


© 2005 TFH ARCHITECTS

SUMNER COURT
A QUALITY RESIDENTIAL DEVELOPMENT BY FORT SUMNER, LLC
117 SHERIDAN STREET, PORTLAND, MAINE



TFH ARCHITECTS
100 COMMERCIAL STREET
PORTLAND MAINE 04101
TELEPHONE 207 775 6141
ARCHITECTURE PLANNING

CONSULTANTS:
STRUCTURAL:
Structural Design Consulting
22 Oakmont Drive
Old Orchard Beach, ME 04064
207-934-8038

REVISIONS:

DATE: January 19, 2005

PROJECT No. 0418

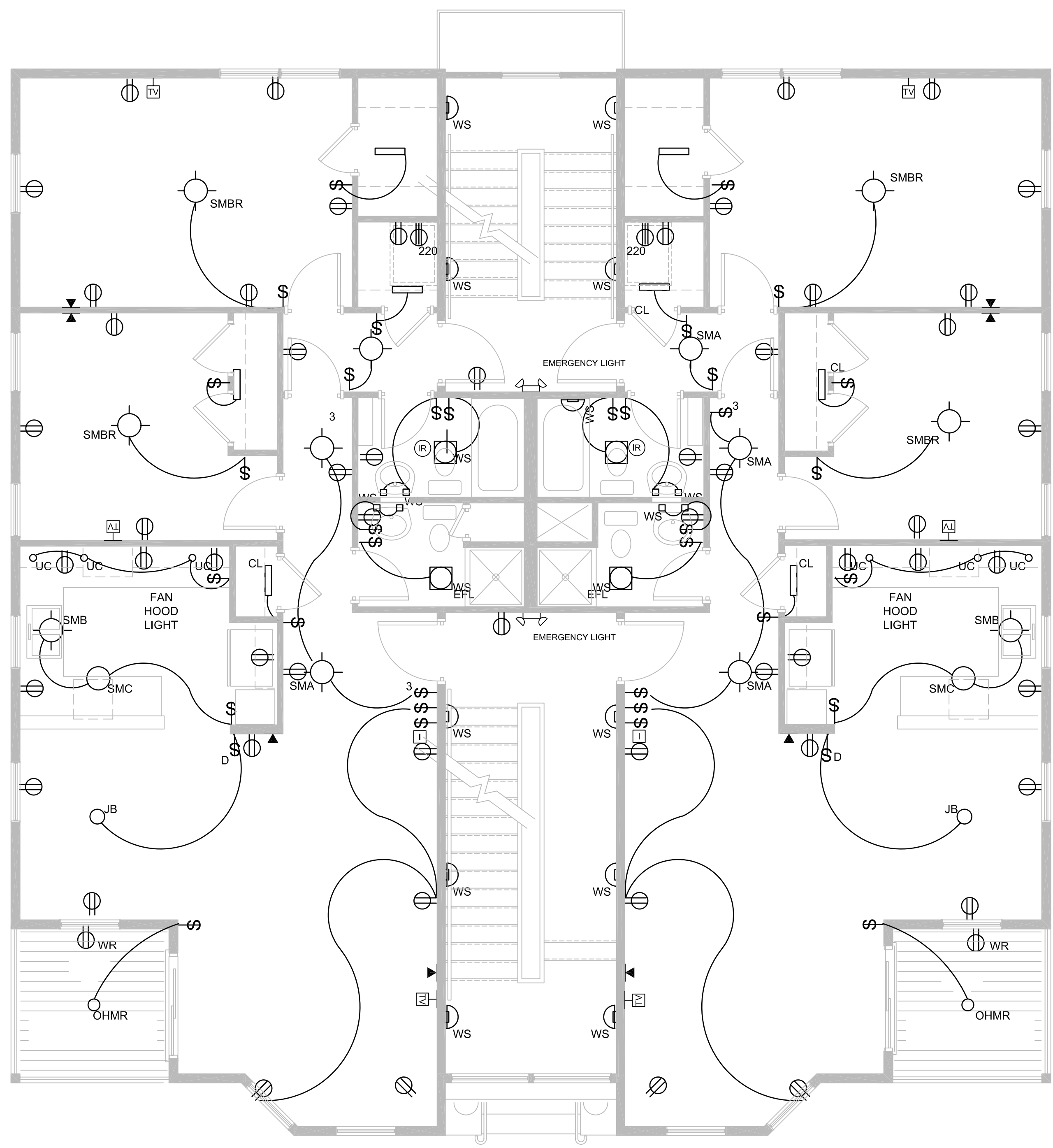
DRAWN BY: CSC, TST

CHECKED BY: TST

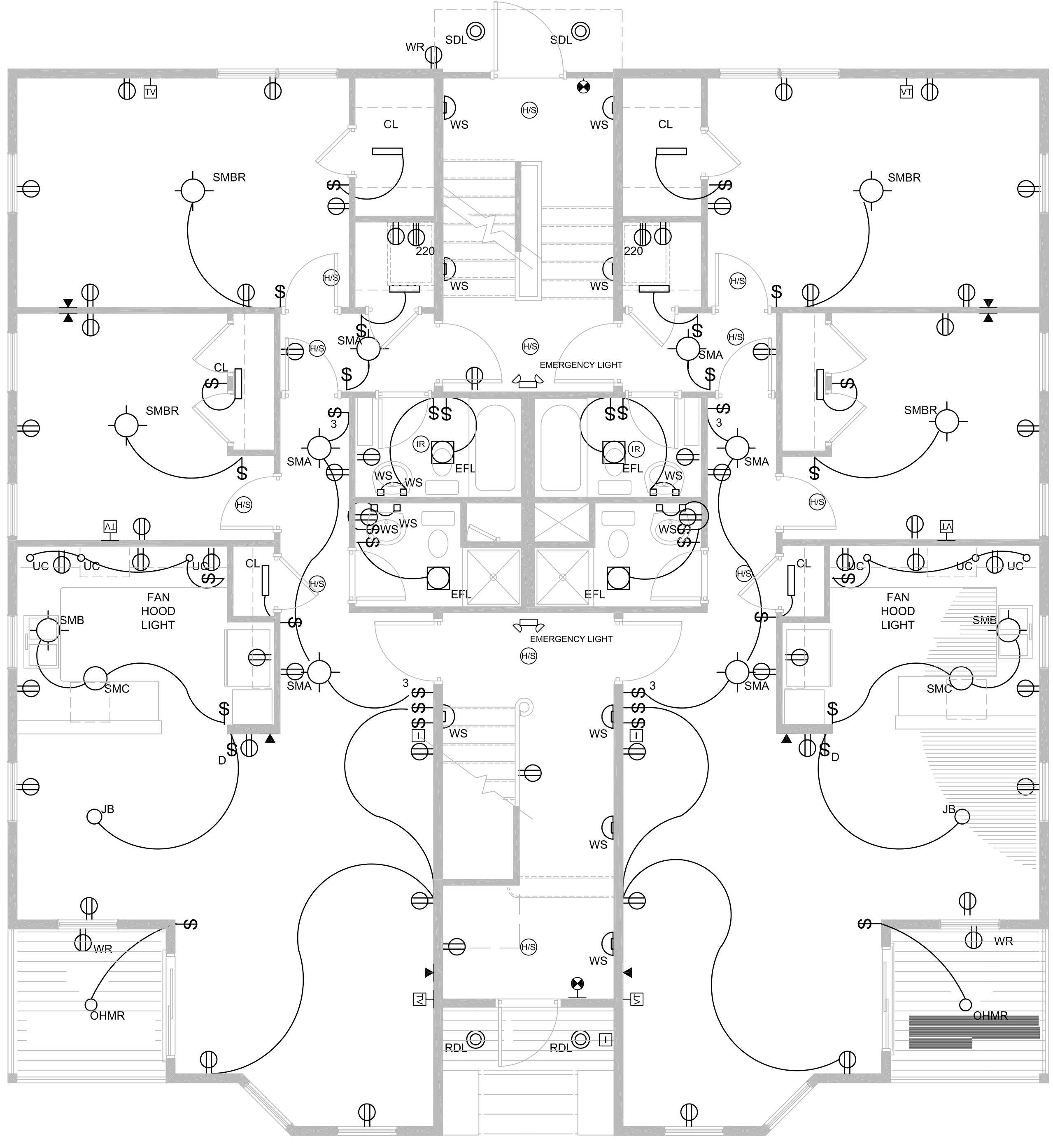
SCALE: As Noted

SHEET TITLE:
Electrical Plans

E1-2



2 SECOND FLOOR PLAN
A1-2 SCALE: 1/4" = 1'-0"



1 FIRST FLOOR PLAN
A1-2 SCALE: 1/4" = 1'-0"

