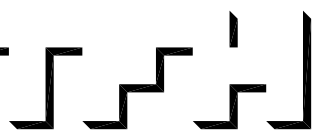


© 2005 TFH ARCHITECTS

SUMNER COURT
A QUALITY RESIDENTIAL DEVELOPMENT BY FORT SUMNER, LLC
117 SHERIDAN STREET, PORTLAND, MAINE



TFH ARCHITECTS
100 COMMERCIAL STREET
PORTLAND MAINE 04101
TELEPHONE 207 775 6141
ARCHITECTURE PLANNING

CONSULTANTS:
STRUCTURAL:
Structural Design Consulting
22 Oakmont Drive
Old Orchard Beach, ME 04064
207-934-8038

REVISIONS:

DATE: February 3, 2005

PROJECT No. 0418

DRAWN BY: CSC, TST

CHECKED BY: TST

SCALE: As Noted

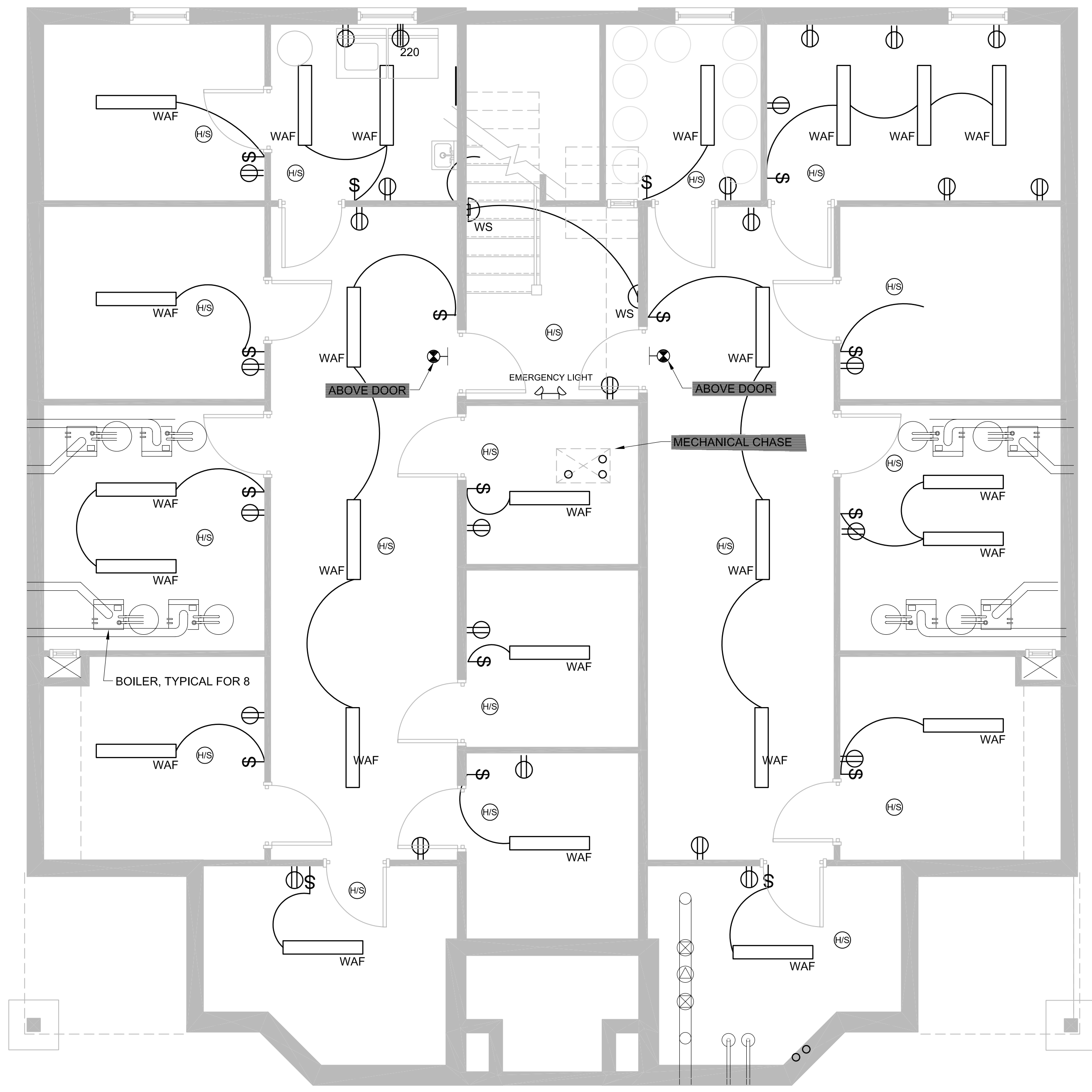
SHEET TITLE:
Electrical Plans

E1-1

LEGEND		

GENERAL NOTES

1. ALL THROUGH CEILING FIXTURES TO RECEIVE FIRE REFLECTOR AND FIRE-RATED ENCLOSURE



1 BASEMENT PLAN
A1-1 SCALE: 1/4" = 1'-0"

