

© 2009 TFH ARCHITECTS

135 SHERIDAN
FOR SHINBERG CONSULTING
PORTLAND, MAINE

TFH ARCHITECTS
100 COMMERCIAL STREET
PORTLAND MAINE 04101
TELEPHONE 207 775 6141
ARCHITECTURE PLANNING

CONSULTANTS:

REVISIONS:

DATE: 11/06/09
PROJECT No. 0507
DRAWN BY: RJS
CHECKED BY: TST
SCALE: AS NOTED

SHEET TITLE:

UNIT 401
RENOVATIONS

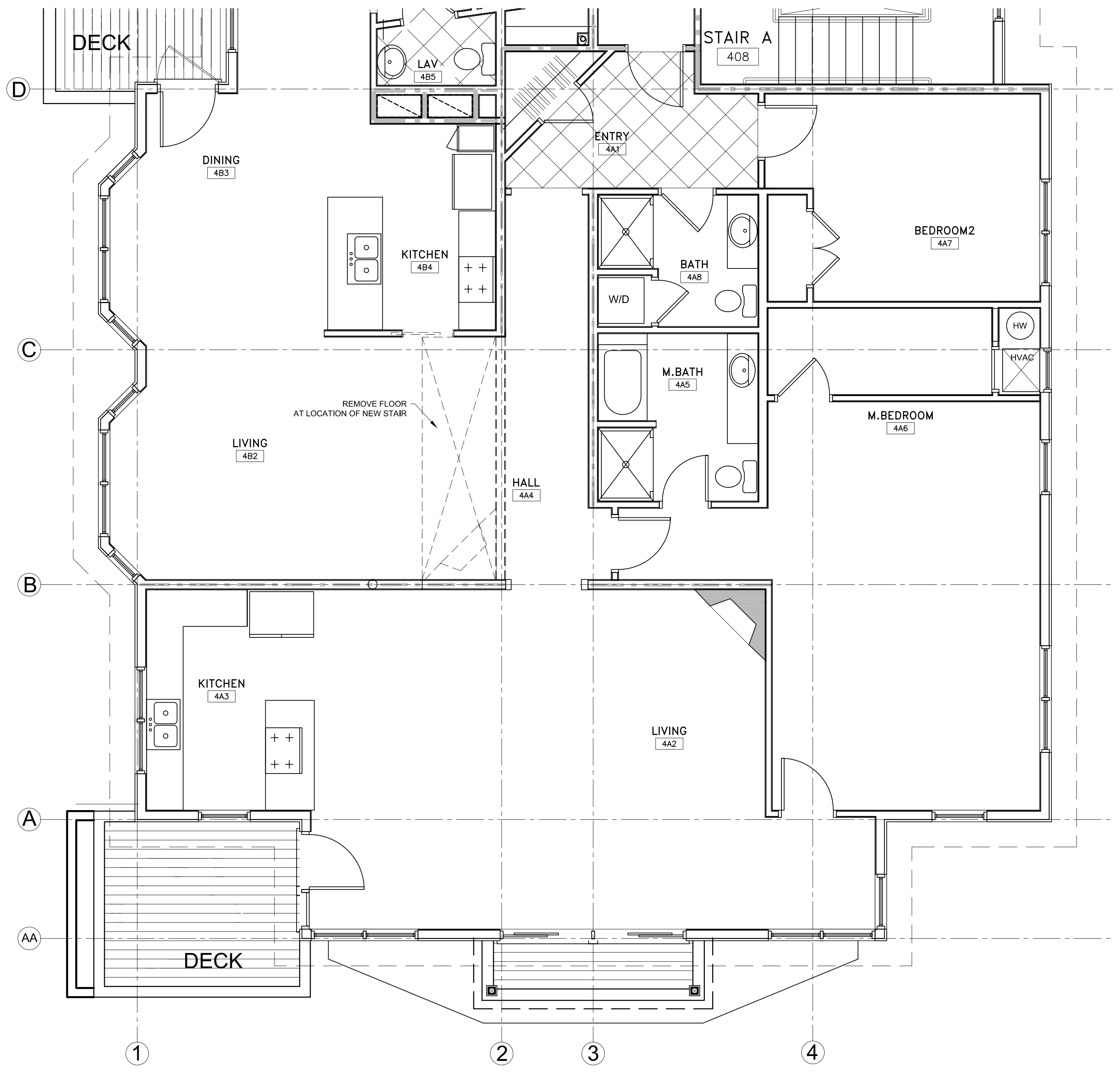
ASK
401

PARTITION TYPES				
GENERAL PARTITION NOTES:				
1.) REFER TO STRUCTURAL DRAWINGS FOR STUD SIZE AND SPACING				
2.) ALL PARTITION TYPES WITH AN INSULATION COMPONENT TO BE ACOUSTICALLY SEALED.				
3.) STRUCTURAL SHEAR WALLS INDICATED BY $\overline{\text{XX}}$ A OSB APPLIED TO ONE SIDE OF THE WALL (AGAINST STUDS) SEE STRUCTURAL DRAWINGS FOR FURTHER $\overline{\text{XX}}$ B OSB APPLIED TO BOTH SIDES OF THE WALL (AGAINST STUDS)				
KEY	STC	UL / GA RATING		DESCRIPTION
NA	35-39	N/A		5/8" GWB 3 1/2" STUDS @ 16" O.C. 5/8" GWB

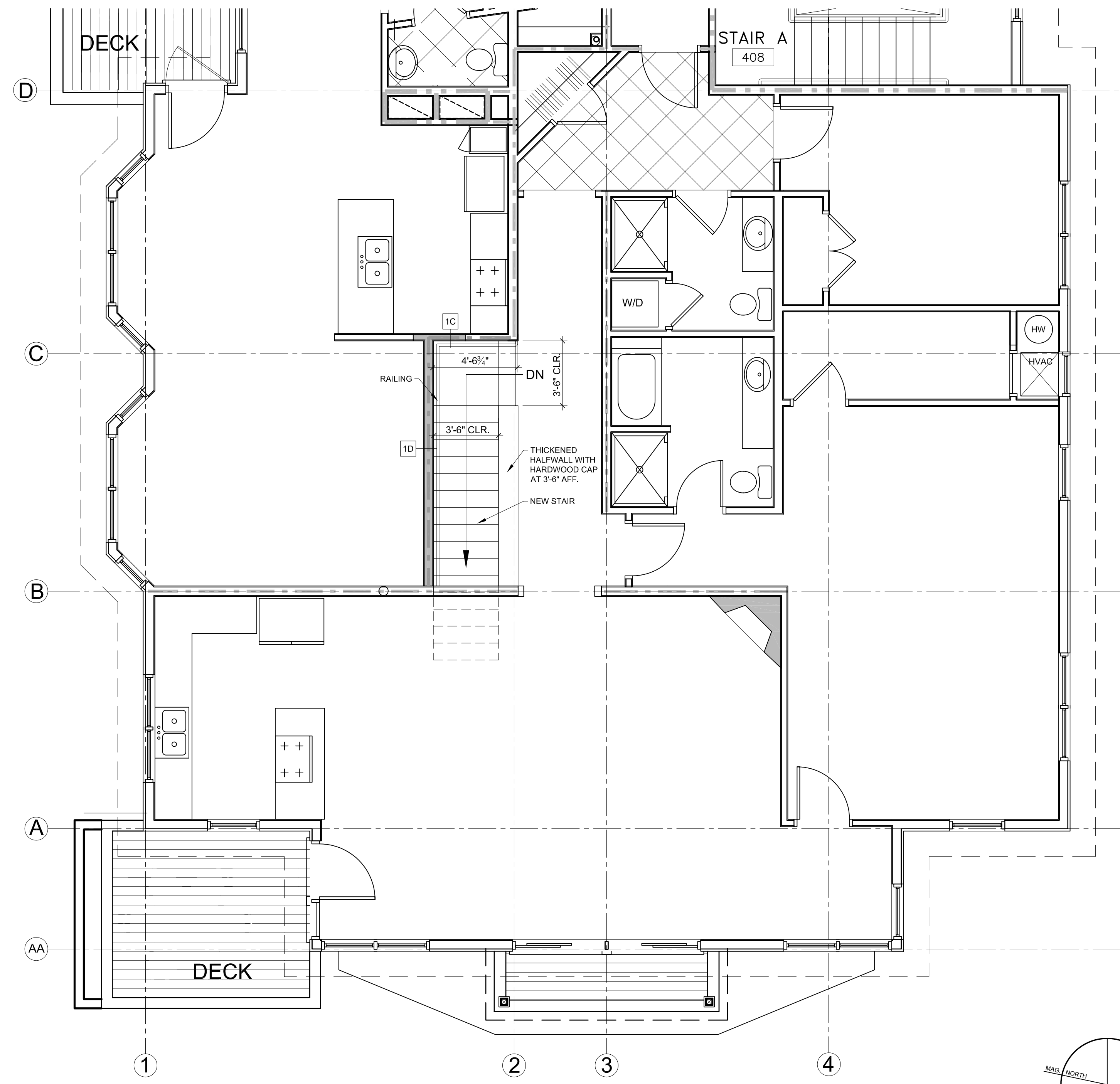
ONE HOUR FIRE RATED PARTITIONS				
REFER TO STRUCTURAL DRAWINGS FOR STUD SIZE AND SPACING				
KEY	STC	UL / GA RATING		DESCRIPTION
1C	50-54	U311		5/8" TYPE-X GWB 2X WOOD STUDS 3 1/2" OR 5 1/2" BATT INSULATION 1/2" MIL. RESILIENT CHANNEL AT 16" O.C. 5/8" TYPE-X GWB.
1D	50-54	U340		5/8" TYPE 'X' GWB SCREENED 7" O.C. TO 2 X 4 WOOD STUDS 16" O.C. STAGGERED 9" O.C. 2 X 8 PLATES TOP & BOTTOM. SOUND RATING WITH 3 1/2" GLASS FIBER IN GAVITIES. ADD RESILIENT CHANNELS TO ONE SIDE FOR ACOUSTIC VALUE. 5/8" TYPE 'X' GWB

WALL LEGEND	
	EXISTING WALL
	WALL TO BE REMOVED
	NEW WALL
	1 HOUR FIRE RATING
	2 HOUR FIRE RATING

- NOTES**
- DIMENSIONS ARE TO FACE OF STUD UNLESS NOTED OTHERWISE
 - CONTRACTOR TO COORDINATE SPRINKLER, MECHANICAL, ELECTRICAL AND PLUMBING LAYOUT WITH WALL MODIFICATIONS
 - CONTRACTOR TO COORDINATE FINISHES
 - REFER TO STRUCTURAL DRAWINGS PRIOR TO COMMENCING DEMOLITION



1 FOURTH FLOOR DEMOLITION PARTIAL PLAN
1/4" = 1'-0"



2 FOURTH FLOOR PARTIAL PLAN
1/4" = 1'-0"

