

© 2009 TFH ARCHITECTS

135 SHERIDAN
FOR SHINBERG CONSULTING
PORTLAND, MAINE



CONSULTANTS:

REVISIONS:

DATE: 11/06/09

PROJECT No. 0507

DRAWN BY: RJS

CHECKED BY: TST

SCALE: AS NOTED

SHEET TITLE:

UNIT 302 AND 401
RENOVATIONS

ASK
302-401

WALL LEGEND

- EXISTING WALL
- WALL TO BE REMOVED
- NEW WALL
- 1 HOUR FIRE RATING
- 2 HOUR FIRE RATING

NOTES

1. DIMENSIONS ARE TO FACE OF STUD UNLESS NOTED OTHERWISE
2. CONTRACTOR TO COORDINATE SPRINKLER, MECHANICAL, ELECTRICAL AND PLUMBING LAYOUT WITH WALL MODIFICATIONS
3. CONTRACTOR TO COORDINATE FINISHES
4. REFER TO STRUCTURAL DRAWINGS PRIOR TO COMMENCING DEMOLITION

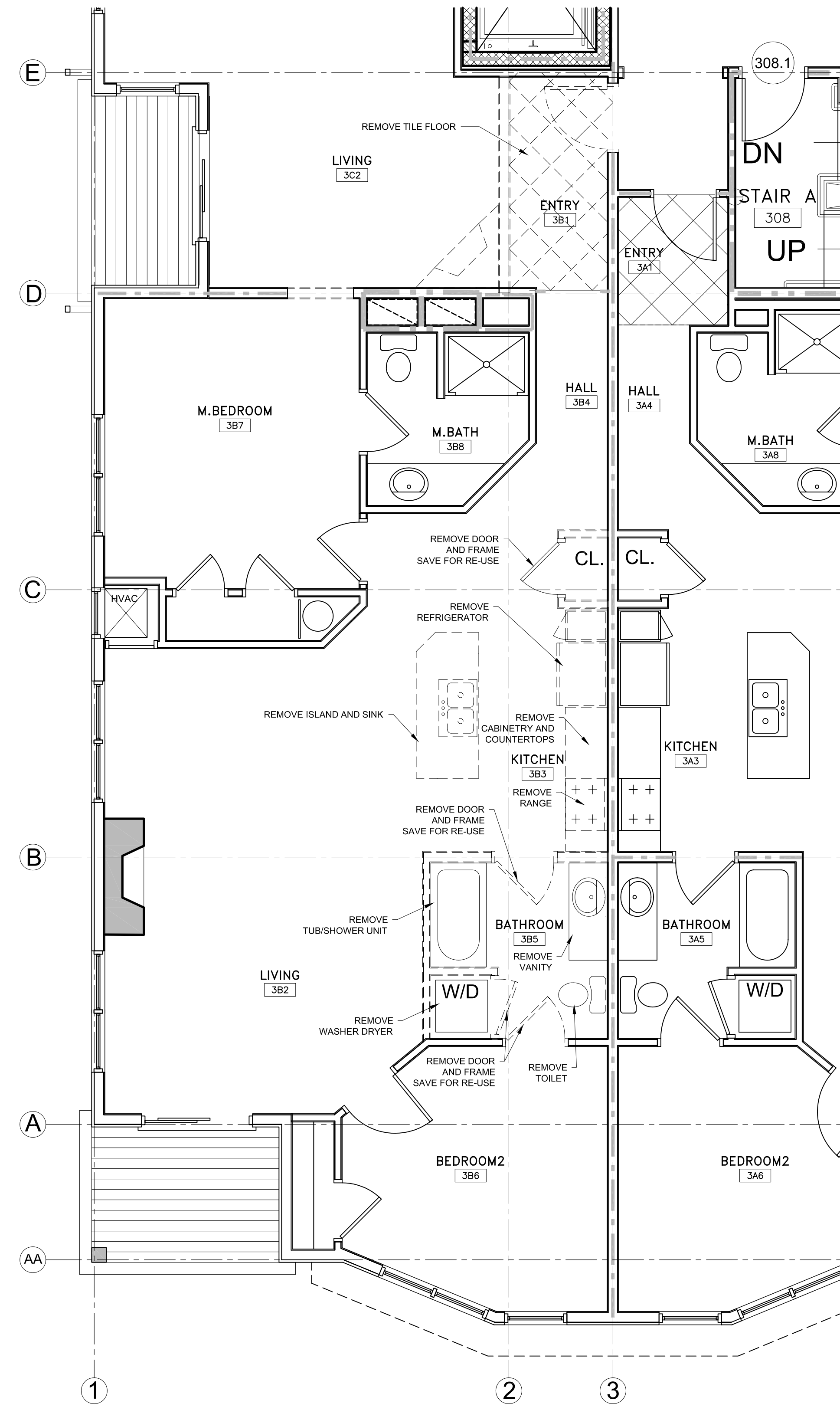
PARTITION TYPES

- GENERAL PARTITION NOTES:
- 1.) REFER TO STRUCTURAL DRAWINGS FOR STUD SIZE AND SPACING
 - 2.) ALL PARTITION TYPES WITH AN INSULATION COMPONENT TO BE ACCOUSITCALLY SEALED.
 - 3.) STRUCTURAL SHEAR WALLS INDICATED BY OSB APPLIED TO ONE SIDE OF THE WALL (AGAINST STUDS) SEE STRUCTURAL DRAWINGS FOR FURTHER OSB APPLIED TO BOTH SIDES OF THE WALL (AGAINST STUDS)

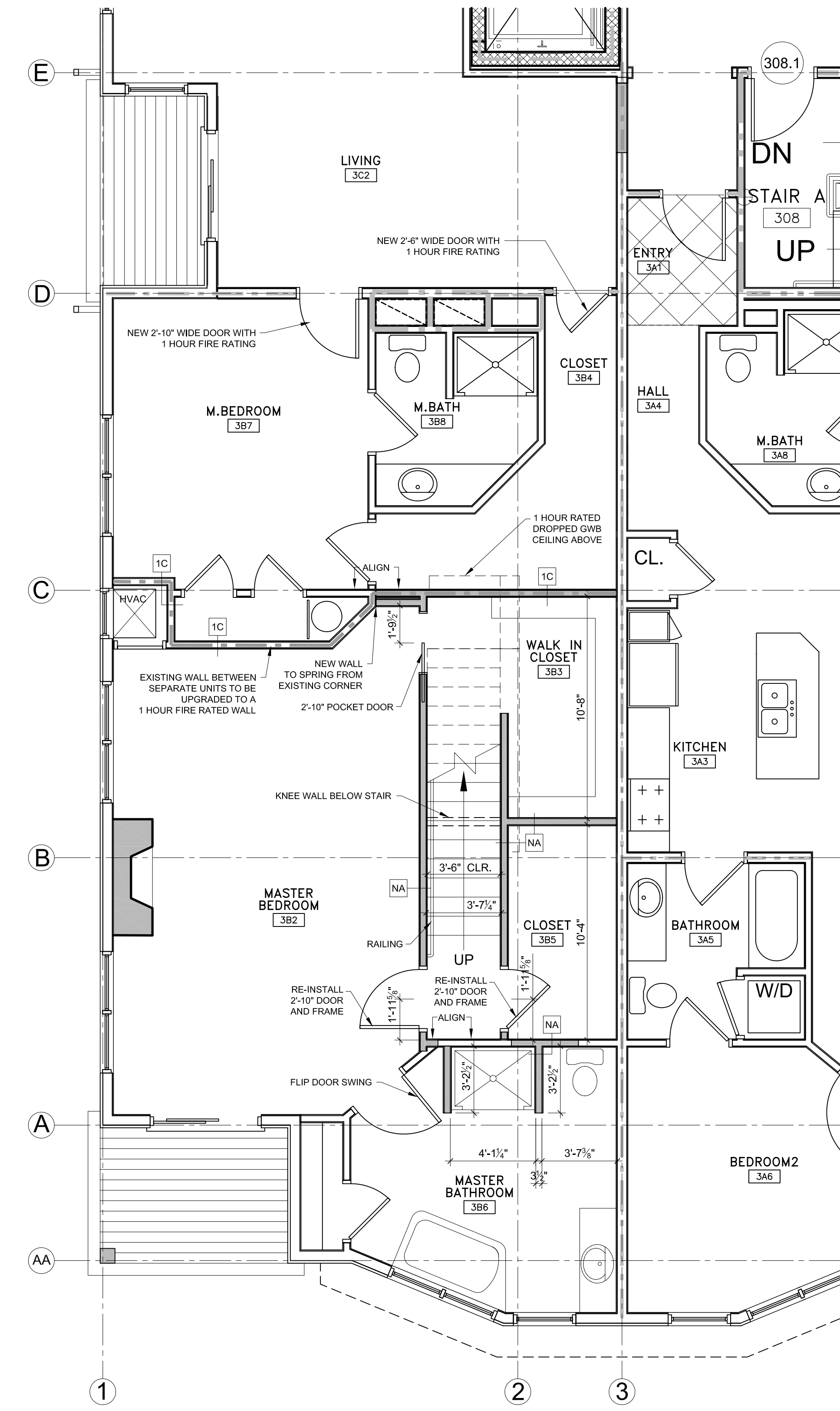
KEY	STC	UL / GA RATING	DESCRIPTION
NA	35-39	N/A	58" GWB 3 1/2" STUDS @ 16" O.C. 58" GWB

ONE HOUR FIRE RATED PARTITIONS

KEY	STC	UL / GA RATING	RATED PARTITIONS TO EXTEND TO BOTTOM OF FLOOR DECK ABOVE, THROUGH FLOOR-CEILING ASSEMBLY.	DESCRIPTION
1C	50-54	US11		58" TYPE-X GWB 2X WOOD STUDS 3 1/2" OR 5 1/2" BATT INSULATION 1/2" MTL RESILIENT CHANNEL AT 16" O.C. 58" TYPE-X GWB.
1D	50-54	US40		58" TYPE-X GWB SCREWED 7" O.C. TO 2 X 4 WOOD STUDS 16" O.C. STAGGERED 1" O.C. 2 X 6 PLATES TOP & BOTTOM. SOUND RATING WITH 3 1/2" GLASS FIBER IN CAVITIES. ADD RESILIENT CHANNELS TO ONE SIDE FOR ACCOUSITC VALUE. 58" TYPE-X GWB



1 THIRD FLOOR DEMOLITION PARTIAL PLAN
1/4" = 1'-0"



2 THIRD FLOOR PARTIAL PLAN
1/4" = 1'-0"

