

© 2007 TFH ARCHITECTS

SHERIDAN HEIGHTS
PROPOSED CONDOMINIUMS AT
135 SHERIDAN STREET, PORTLAND MAINE
FOR SHERIDAN STREET LLC



TFH ARCHITECTS
100 COMMERCIAL STREET
PORTLAND MAINE 04101
TELEPHONE 207 775 6141
ARCHITECTURE PLANNING

CONSULTANTS:
REFER TO TITLE SHEET FOR
CONSULTANT INFORMATION

OWNERS' REPRESENTATIVE

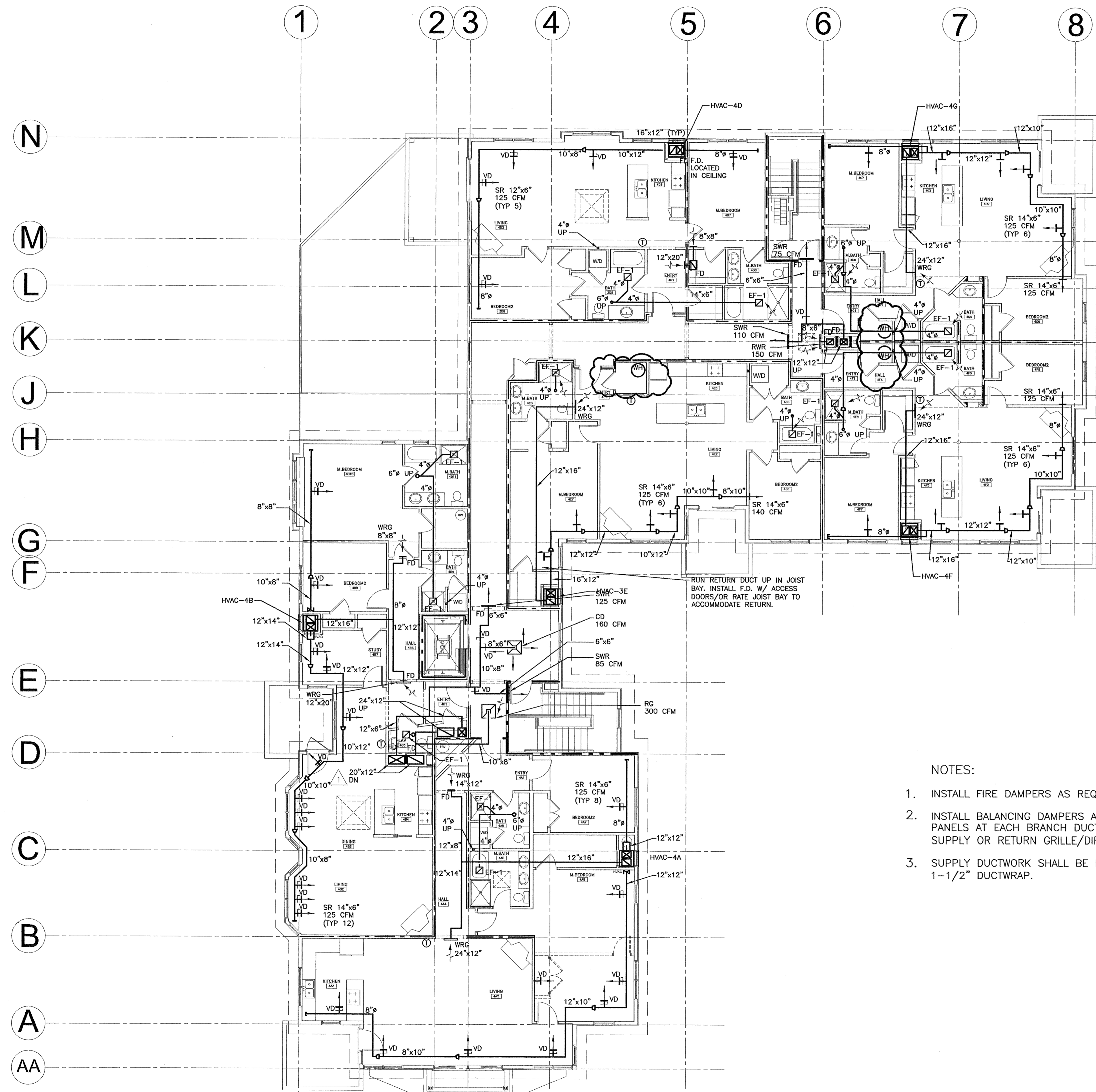
477 CONGRESS STREET, 5TH FLOOR,
PORTLAND, ME 04101
TEL: 207 523 5410

REVISIONS:

DATE: 10/01/07
PROJECT No. 507
DRAWN BY: RTL,RJS
CHECKED BY: TST
SCALE: AS NOTED

SHEET TITLE:
FOURTH
FLOOR
MECHANICAL
PLAN

M1.3



- NOTES:
1. INSTALL FIRE DAMPERS AS REQUIRED
 2. INSTALL BALANCING DAMPERS AND ACCESS PANELS AT EACH BRANCH DUCT SERVING A SUPPLY OR RETURN GRILLE/DIFFUSER
 3. SUPPLY DUCTWORK SHALL BE INSULATED WITH 1-1/2" DUCTWRAP.

1 FOURTH FLOOR PLAN
A1.3 1/8" = 1'-0"

ISSUED FOR
REVIEW 10.1.07

